



# For Lease

## Flex Space with fenced yard

- 12,880 SF Total
  - 6,160 SF Garage/Shop Space
  - 3,360 SF Office Space Floor 1
  - 3,360 SF Office Space Floor 2
- Fenced Yard Area: 0.57 acres
- Ceiling Height: 19' clear height in shop
- Loading:
  - Three (3) 12'x14' Drive-in
  - Two (2) 12'x12' Drive-in
- Wash bay on site

**Creekwood Corporate Center**  
**900 W. Basin Road**  
**New Castle, DE 19720**

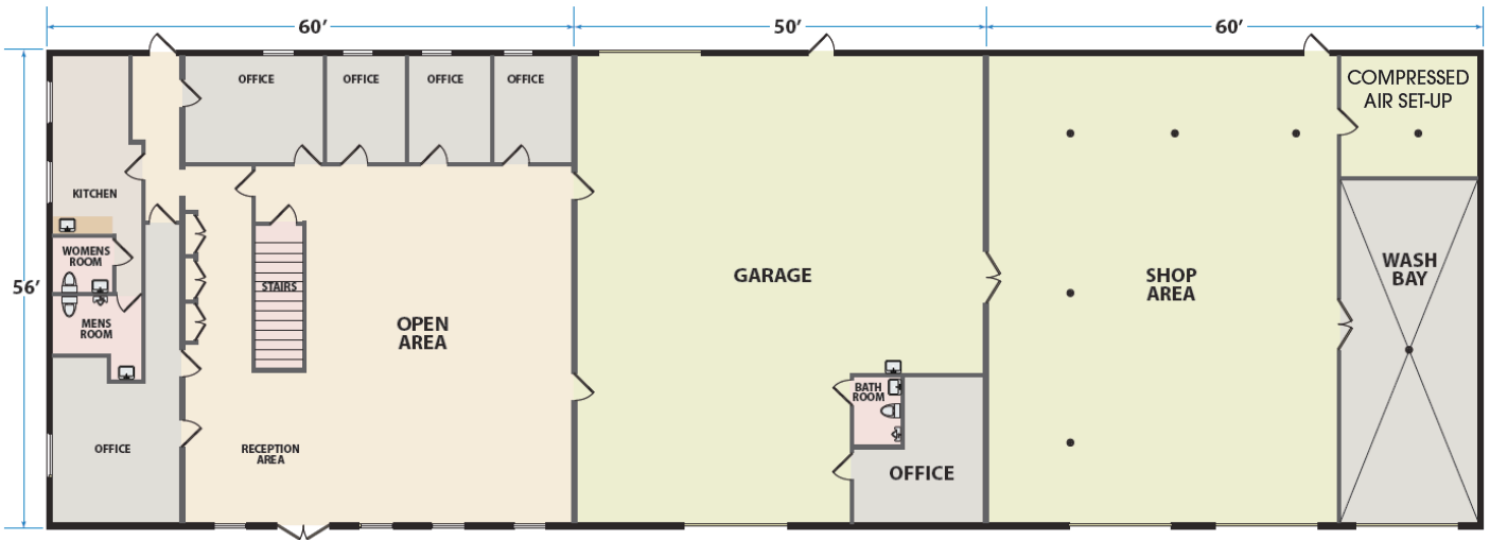
**Cindy Fleming**  
+1 302 356 2866  
cindy.fleming@am.jll.com

**Jamie Vari**  
+1 302 356 2862  
jamie.vari@am.jll.com

**JLL | Jones Lang LaSalle**  
222 Delaware Avenue | Suite 1610  
Wilmington, DE 19801  
+1 302 356 2858  
jll.com/philadelphia

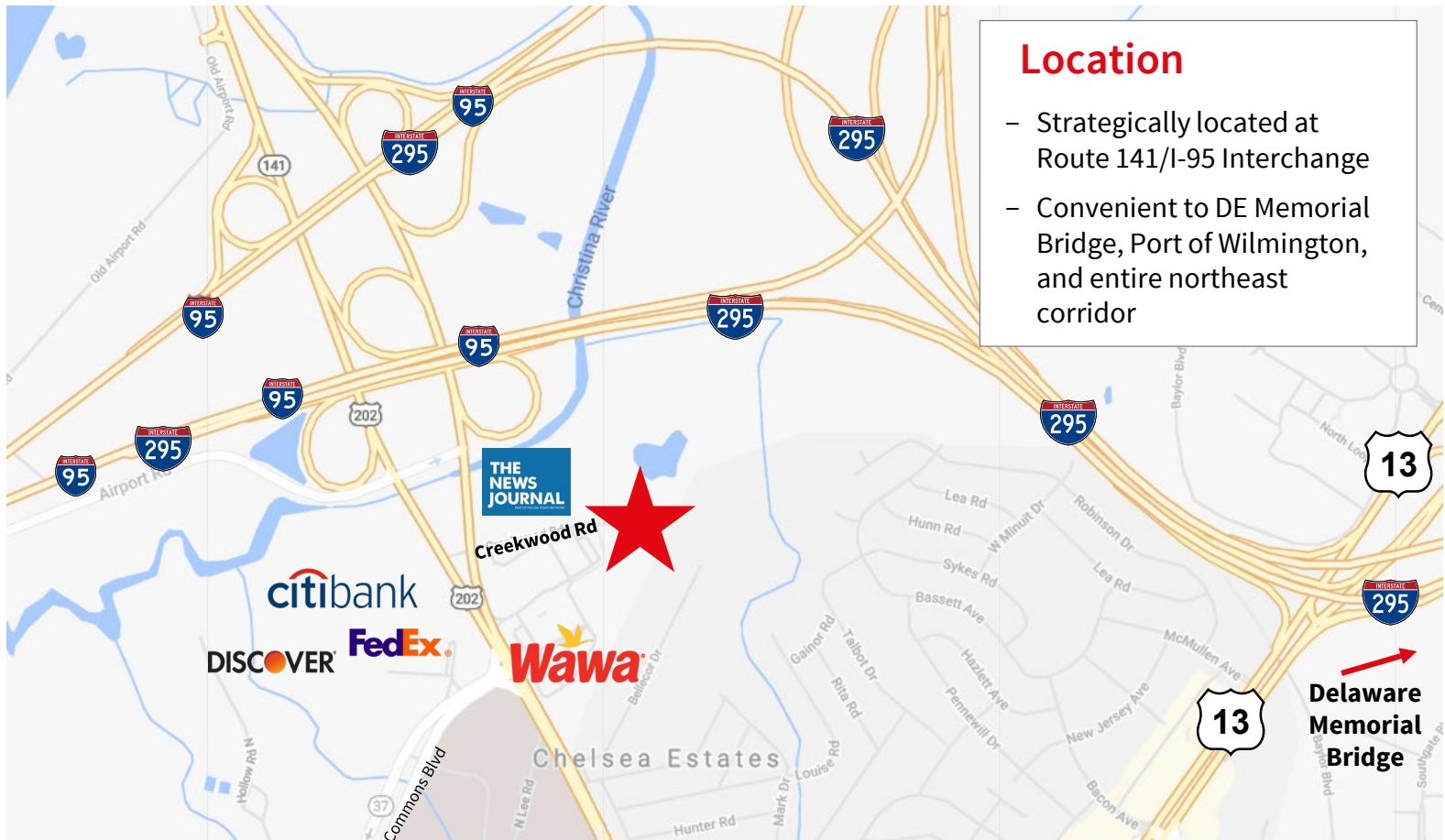


**Garage/Shop Space - 6,160 SF**  
**1<sup>st</sup> Floor Office Space - 3,360 SF**



**2nd Floor Office Space - 3,360 SF**





**Location**

- Strategically located at Route 141/I-95 Interchange
- Convenient to DE Memorial Bridge, Port of Wilmington, and entire northeast corridor

**Property Description**

- Power: 400 Amp
- Heat: Modine gas-fired hot air units
- Water & Sewer: Public
- Zoning: I - UDC - Industrial
- Optional: Diesel fueling station



Rear of Building



Showroom

**Creekwood Corporate Center**  
**900 W. Basin Road**  
**New Castle, DE 19720**

**DISCLAIMER**

Although information has been obtained from sources deemed reliable, neither Owner nor JLL makes any guarantees, warranties or representations, express or implied, as to the completeness or accuracy as to the information contained herein. Any projections, opinions, assumptions or estimates used are for example only. There may be differences between projected and actual results, and those differences may be material. The Property may be withdrawn without notice. Neither Owner nor JLL accepts any liability for any loss or damage suffered by any party resulting from reliance on this information. If the recipient of this information has signed a confidentiality agreement regarding this matter, this information is subject to the terms of that agreement. ©2019 Jones Lang LaSalle IP, Inc. All rights reserved.

