

FOR LEASE

# WEST WILLOWS TECHNOLOGY CENTER

8730

148TH AVENUE NE

Redmond, Washington 98052



## CONTACT US

### JEFF SCANLAN

First Vice President  
+1 425 462 6923  
jeff.scanlan@cbre.com

### RIC BRANDT

Senior Vice President  
+1 425 462 6901  
ric.brandt@cbre.com

CBRE, Inc.  
10885 NE 4th Street  
Suite 500  
Bellevue, Washington 98004

[www.cbre.com/bellevue](http://www.cbre.com/bellevue)

**CBRE**



# FOR LEASE

# WEST WILLOWS TECHNOLOGY CENTER



## PROPERTY FEATURES

- + Lease Rate: \$18.50/RSF/NNN  
Net of Operating Expenses
- + Parking: 3/1,000 RSF
- + Five-building technology/business park  
totaling 164,000 RSF
- + Excellent exposure to Willows Rd and  
easy access to Hwy 520 and I-405
- + Corporate campus environment
- + Close proximity to a variety of retail  
amenities in downtown Redmond  
including outdoor activities associated  
with the Sammamish River Trail system
- + Recently completed extensive upgrades  
including landscaping, parking,  
windows, painting and signage  
throughout the park



## AVAILABLE SPACES

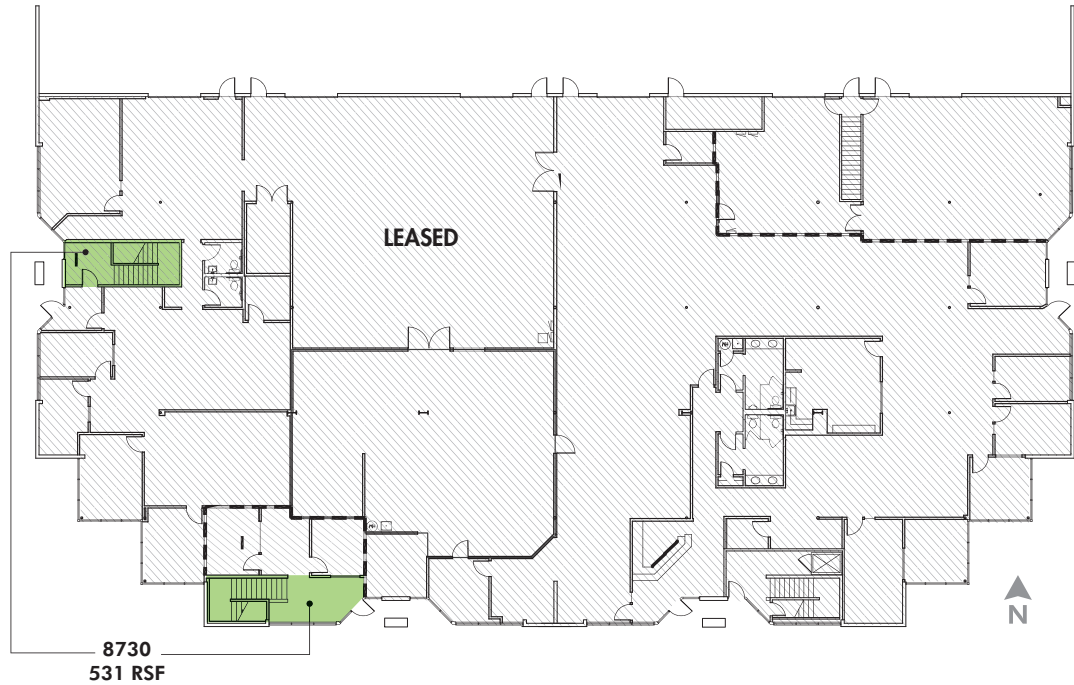
BUILDING B		
SUITE	± RSF	AVAILABILITY
8730	4,437	Immediately





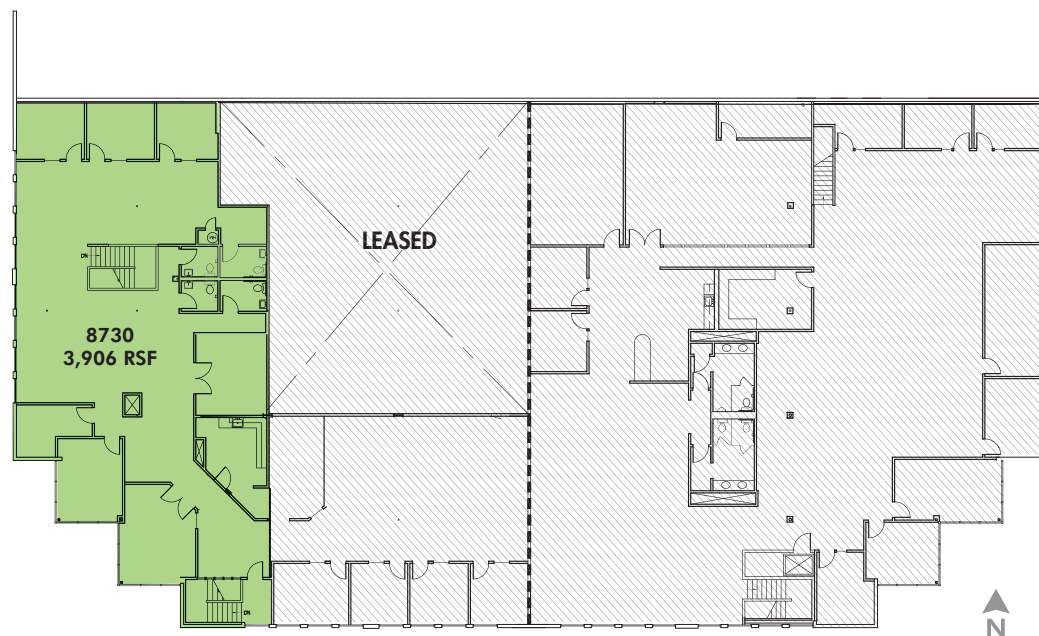
## BUILDING B FLOOR 1

SUITE 8730



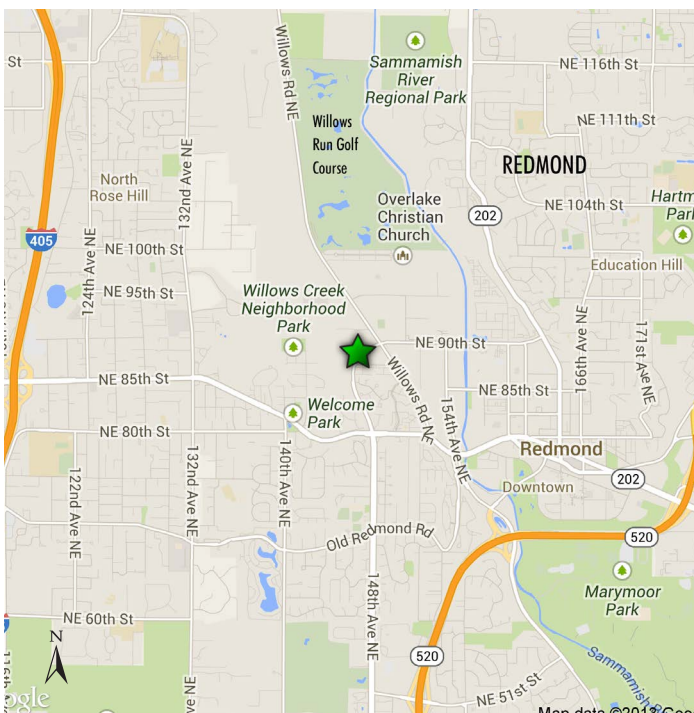
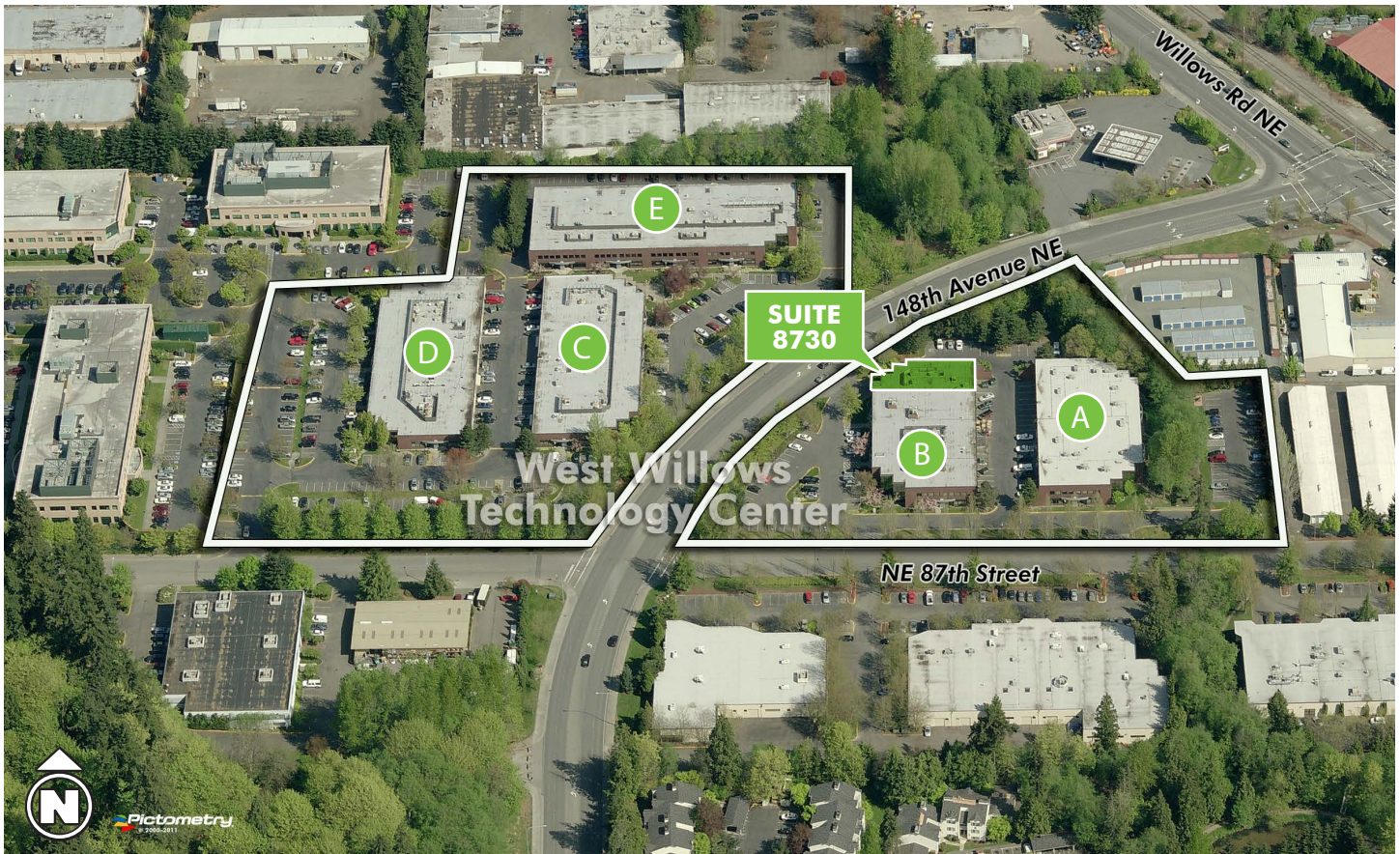
## BUILDING B FLOOR 2

SUITE 8730





# FOR LEASE WEST WILLOWS TECHNOLOGY CENTER



© 2016 CBRE, Inc. This information has been obtained from sources believed reliable. We have not verified it and make no guarantee, warranty or representation about it. Any projections, opinions, assumptions or estimates used are for example only and do not represent the current or future performance of the property. You and your advisors should conduct a careful, independent investigation of the property to determine to your satisfaction the suitability of the property for your needs. CBRE and the CBRE logo are service marks of CBRE, Inc. and/or its affiliated or related companies in the United States and other countries. All other marks displayed on this document are the property of their respective owners. Photos herein are the property of their respective owners and use of these images without the express written content of the owner is prohibited. JC 01-31-17

[www.cbre.com/bellevue](http://www.cbre.com/bellevue)

**CBRE**