



Lucien Green

2250 Lucien Way, Maitland, FL 32751



## Space Available

1,539- 15,917± sf

**FOR LEASE**



Location



Floor Plan



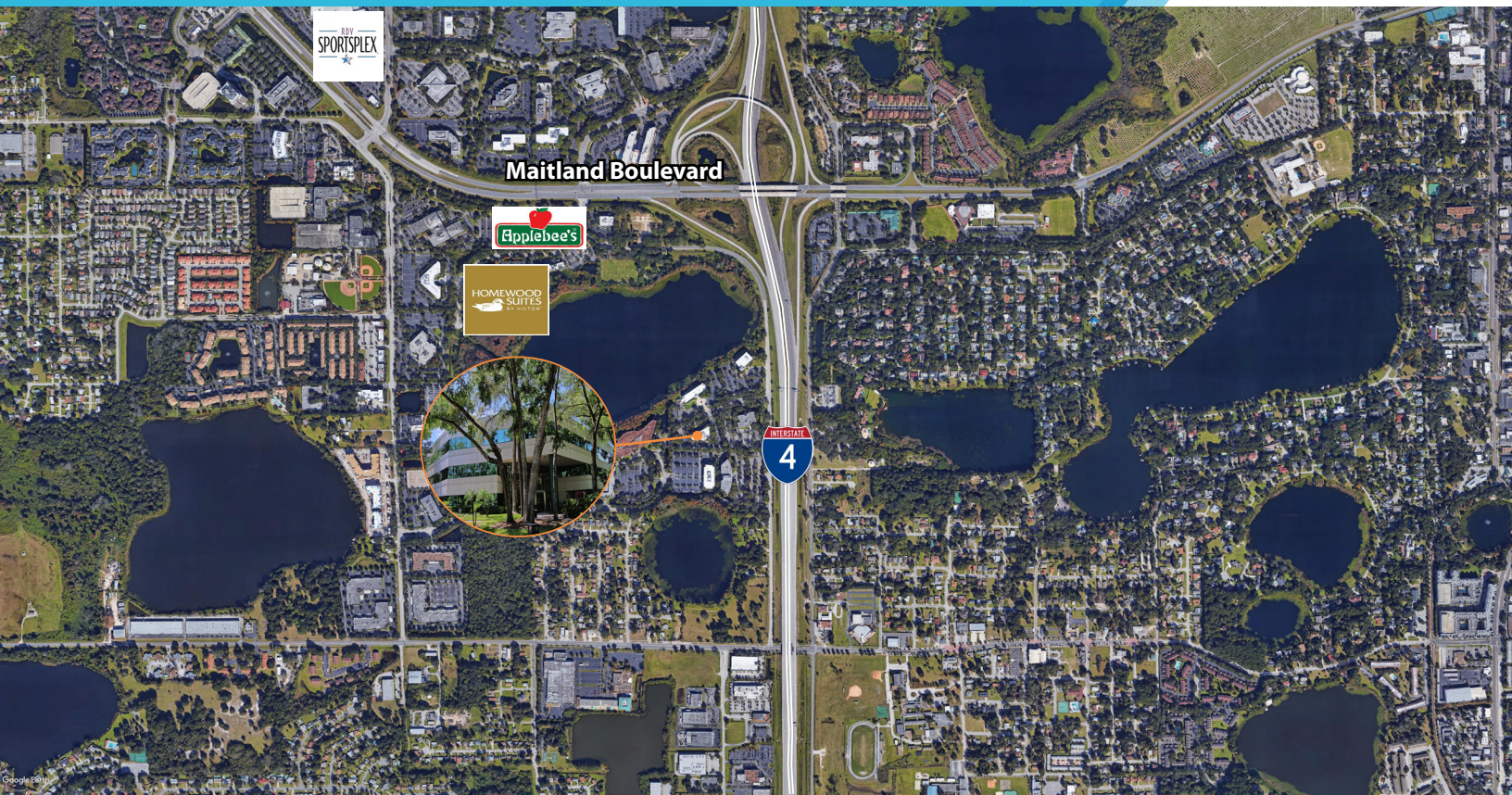
Contact



Next

Emily Zinaich  
Senior Vice President  
407.440.6641  
[emily.zinaich@avisonyoung.com](mailto:emily.zinaich@avisonyoung.com)





## Property Highlights

- Park like setting with mature landscaping
- Convenient access to Interstate-4
- Minutes to Downtown Orlando
- Nearby amenities include the RDV Sportsplex, Sam Snead's Tavern and other restaurants
- Immediate access from all areas of greater Orlando via I-4, the East-West Expressway and Orange Avenue
- Abundant parking
- Dedicated building engineer

[Home](#)[Location](#)[Floor Plan](#)[Contact](#)[Previous](#)[Next](#)

**Emily Zinaich**  
Senior Vice President  
407.440.6641  
[emily.zinaich@avisonyoung.com](mailto:emily.zinaich@avisonyoung.com)



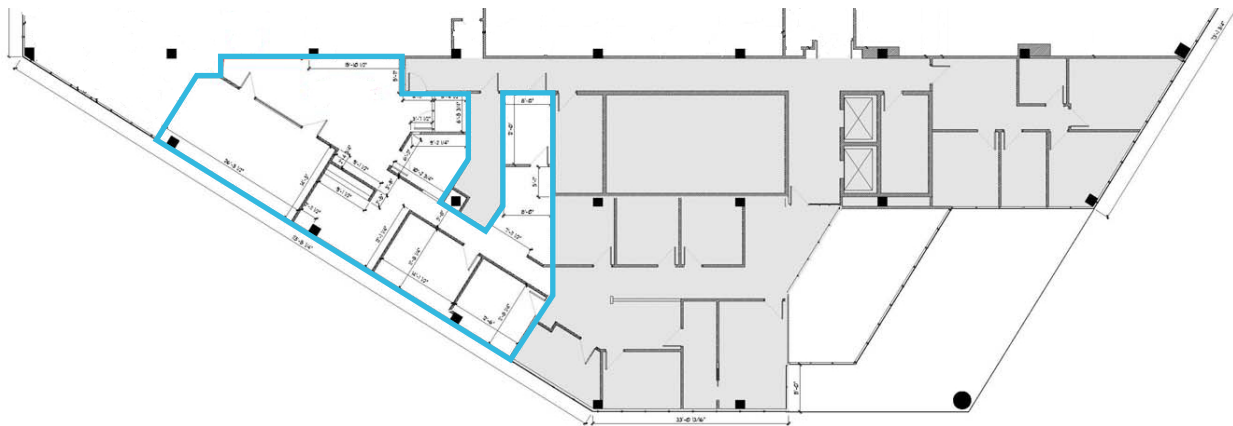
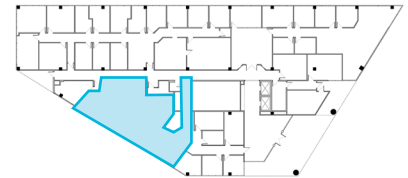
## Lucien Green

2250 Lucien Way, Maitland, FL 32751

### Suite 220

Office: 2,160± sf

### KEY PLAN



Home



Location



Floor Plan



Contact



Previous



Next

Emily Zinaich

Senior Vice President

407.440.6641

[emily.zinaich@avisonyoung.com](mailto:emily.zinaich@avisonyoung.com)

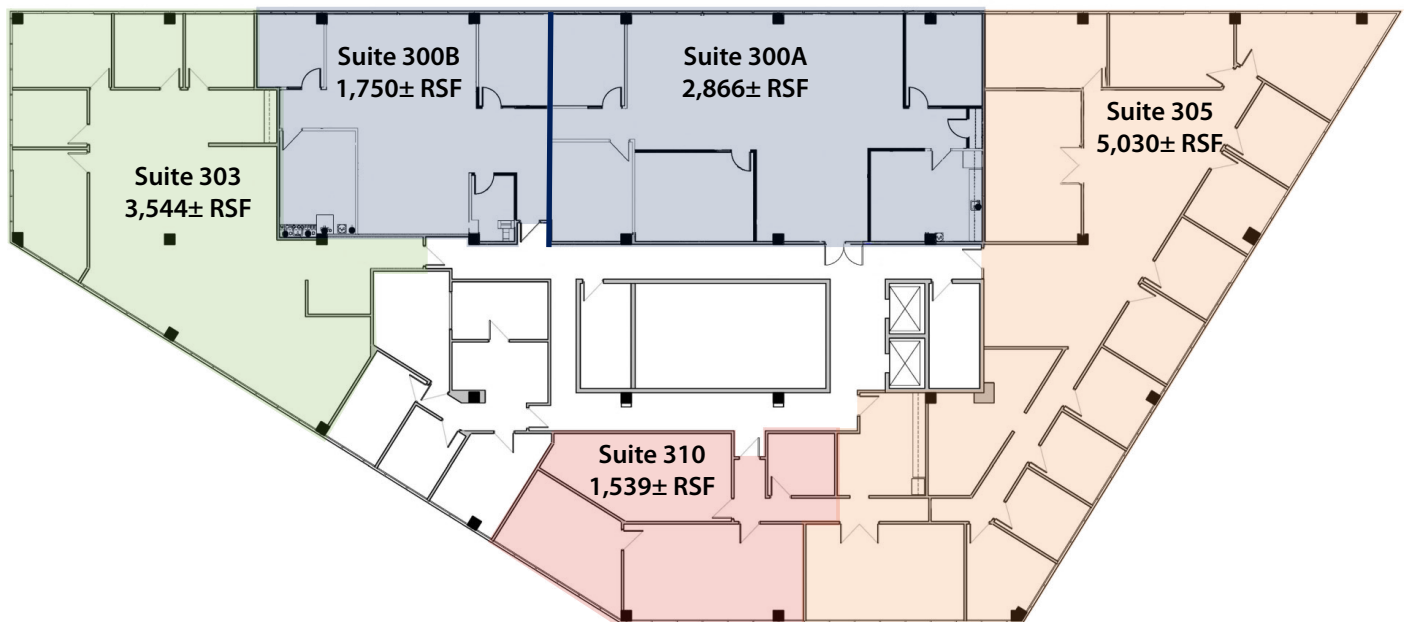


## Lucien Green

2250 Lucien Way, Maitland, FL 32751

Suites 300, 303, 305 and 310

Office: Up to 15,917± sf



Home



Location



Floor Plan



Contact



Previous

Emily Zinaich  
Senior Vice President  
407.440.6641  
[emily.zinaich@avisonyoung.com](mailto:emily.zinaich@avisonyoung.com)