

MICHIGAN AVENUE VAN BUREN TWP., MICHIGAN



**SIGNATURE
ASSOCIATES**
KNOW SIGNATURE | KNOW RESULTS

LAND FOR SALE
12.62 Acres Available

OUTSTANDING DEVELOPMENT OPPORTUNITY



PROPERTY FEATURES

- 12.62 acres available
- All utilities at site and roads are complete
- Possible outside storage
- Zoned heavy industrial
- Located within the Michigan Avenue Industrial Park
- Convenient access to I-94/I-275 and close to Willow Run Airport
- Sale Price: \$100,000/acre



For more information, please contact:

STEVE GORDON
(248) 948 0101
sgordon@signatureassociates.com

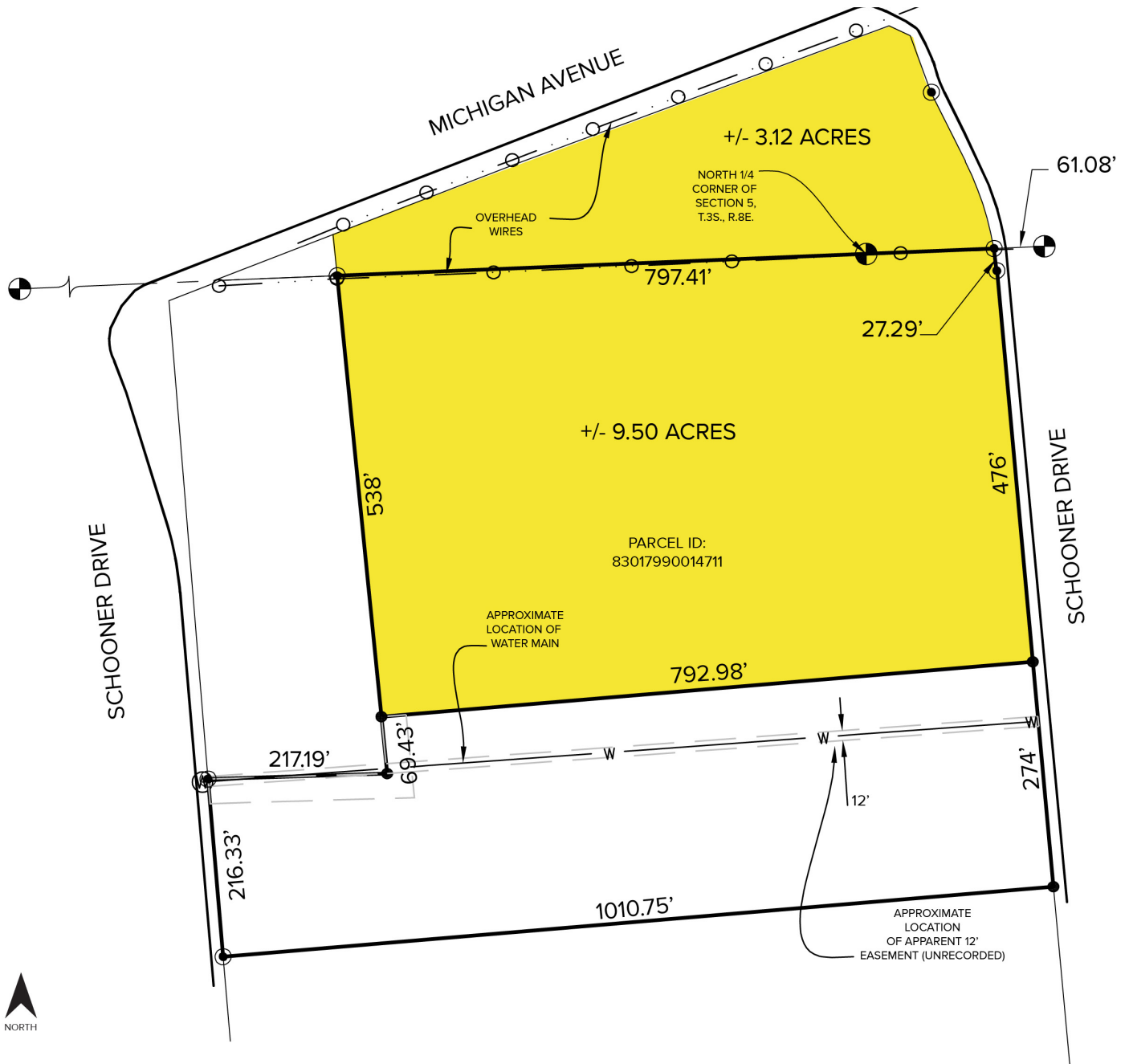
SIGNATURE ASSOCIATES
One Towne Square, Suite 1200
Southfield, MI 48076
www.signatureassociates.com

Michigan Avenue – Van Buren Twp., Michigan

Land For Sale

12.62
Acres
AVAILABLE

Site Plan



For more information, please contact:

STEVE GORDON
(248) 948 0101
sgordon@signatureassociates.com

SIGNATURE ASSOCIATES
One Towne Square, Suite 1200
Southfield, MI 48076
www.signatureassociates.com