

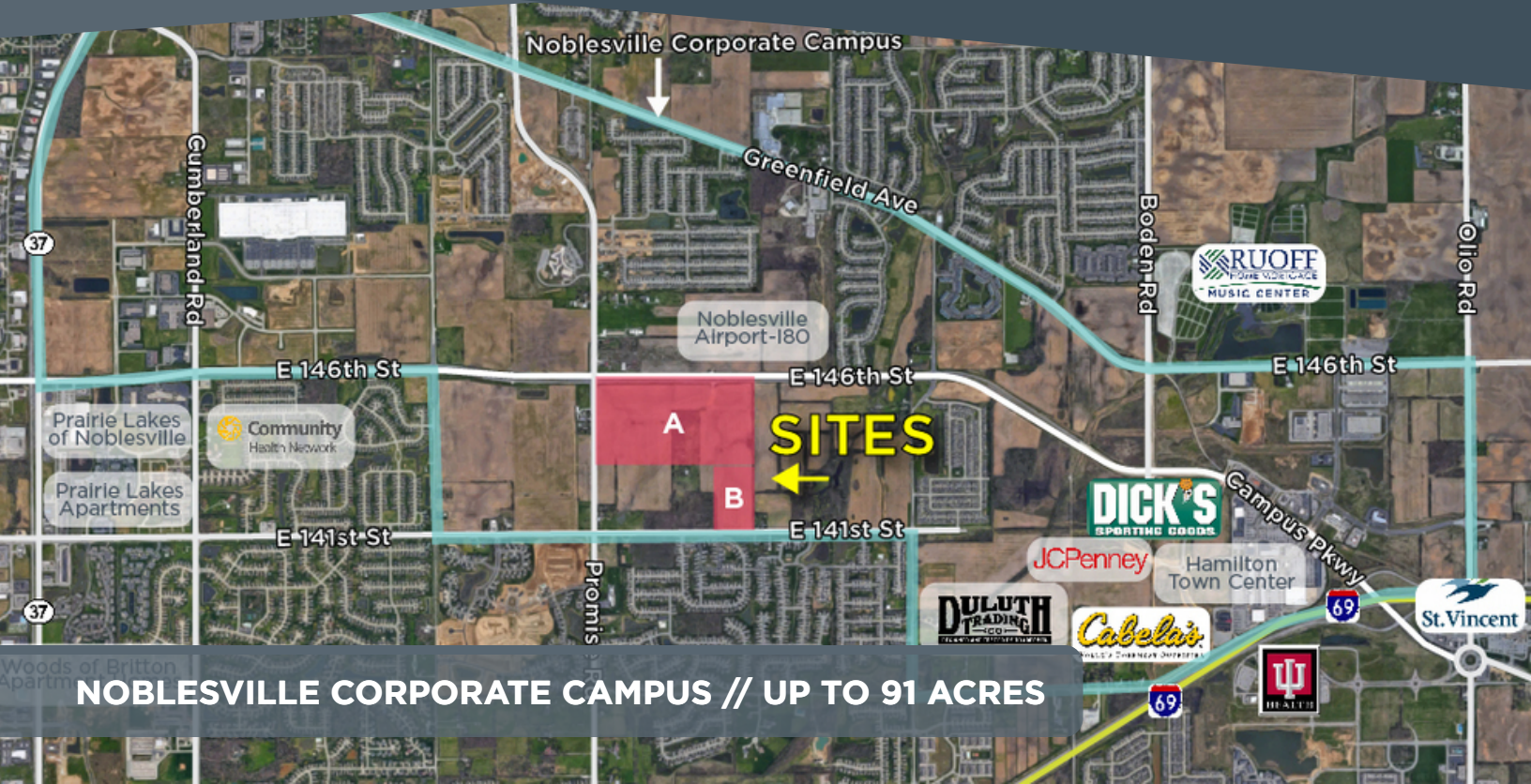
RESOURCE SEC 146TH ST & PROMISE RD

NOBLESVILLE, IN 46060

rcre.com

SALE

LAND



NOBLESVILLE CORPORATE CAMPUS // UP TO 91 ACRES



SALE PRICE

\$100,000/AC
\$55,000/AC

ACREAGE

PARCEL A - 74 ACRES
PARCEL B - 17 ACRES

- + Zoned: Office, Flex, Industrial
- + Traffic light intersection
- + All utilities available
- + Close, easy access to I-69, SR 37
- + Restaurant, shopping, hotel amenities nearby

PaulDickTeam.com

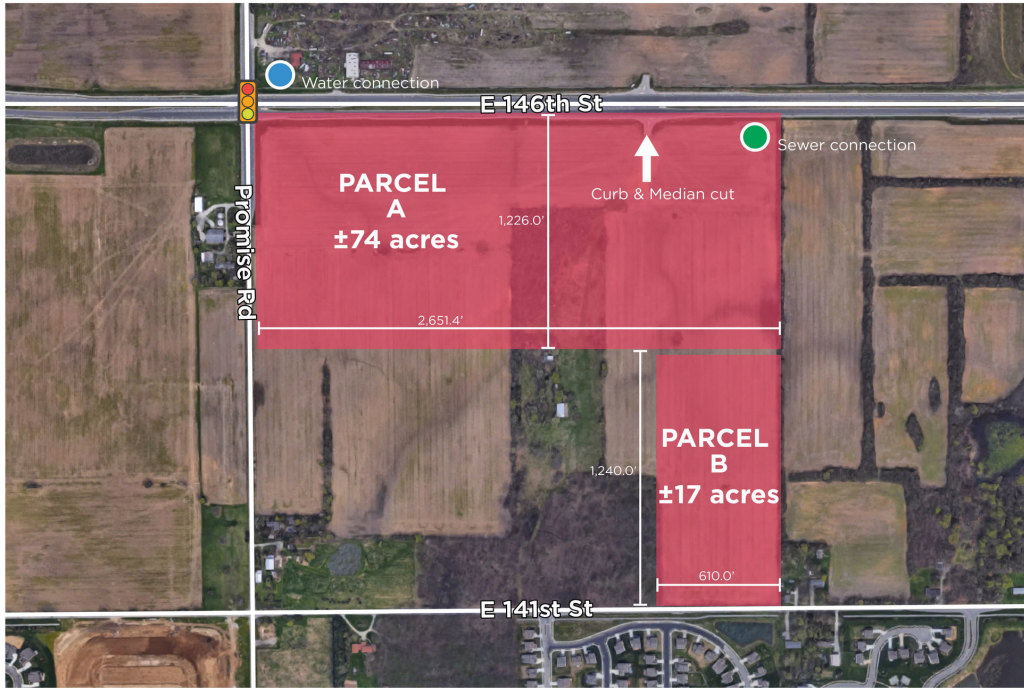
[in](#) [twitter](#) [f](#) [@](#) [v](#) #growIndiana

PAUL DICK, CCIM
Senior Vice President
O 317.663.6540
C 317.698.8055
paul.dick@rcre.com

KEVIN DICK
Senior Vice President
O 317.663.6544
C 317.213.6692
kevin.dick@rcre.com

SEC 146TH ST & PROMISE RD

NOBLESVILLE, IN 46060



UTILITIES

PROVIDERS

Water	Indiana American	Distance 500'
Sewer	City of Noblesville	At site
Electric	Duke Energy	At site
Gas	Vectren	At site

DEMOGRAPHICS

1 MILE

3 MILES

5 MILES

Population	9,538	65,505	136,137
Households	3,171	22,507	48,177
Average HH Income	\$112,669	\$116,125	\$119,902
Median Age	32	33	35