

20  
**EAST  
BURNSIDE**  
AVENUE



# SPACE DETAILS

### LOCATION

Southwest corner of Walton Avenue

### APPROXIMATE SIZE

Ground Floor 2,650 SF\*

*\*Plus full Basement*

### CEILING HEIGHT

18 FT

### FRONTAGE

24 FT on East Burnside Avenue

130 FT on Walton Avenue

### TERM

Negotiable

### POSSESSION

Immediate

### RENT

\$80 PSF

### SITE STATUS

Formerly Jimmy Jazz

### NEIGHBORS

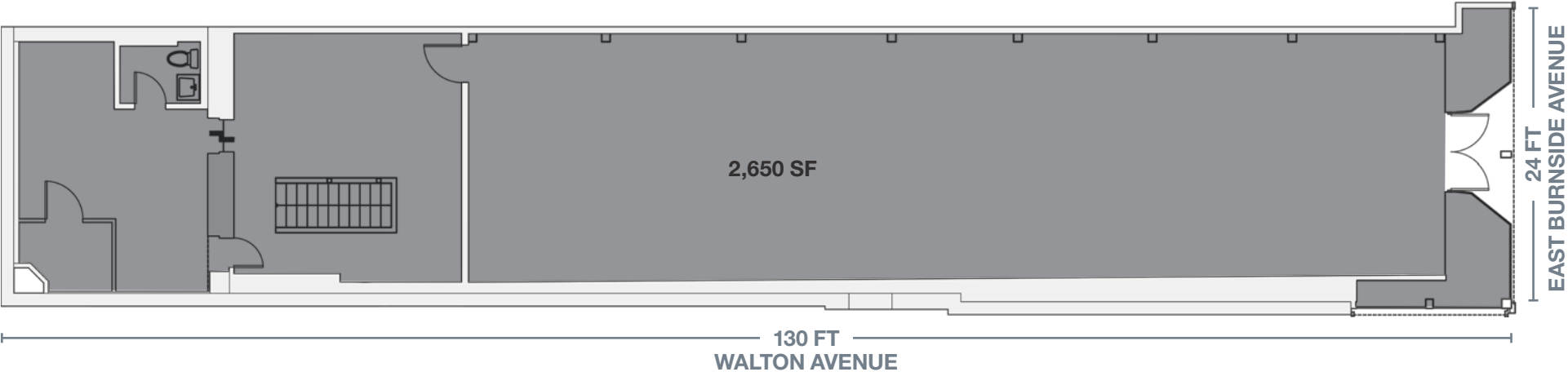
Foot Locker, Rainbow, Payless ShoeSource, Chase and Rite Aid

### COMMENTS

Located on the corner of Walton Avenue in a busy shopping district

One block to the Burnside Avenue 4 train with an annual ridership of 3,617,308

### GROUND FLOOR



# AREA RETAIL



# CONTACT EXCLUSIVE AGENTS

**BARRY FISHBACH**  
212.331.0115  
bfishbach@rkf.com

**YOUNG KIM**  
212.351.9355  
ykim@rkf.com



NGKF.COM



RKF.COM

© 2019 NEWMARK KNIGHT FRANK RETAIL | ROBERT K. FUTTERMAN & ASSOCIATES, LLC The information contained herein has been obtained from sources deemed reliable but has not been verified and no guarantee, warranty or representation, either express or implied, is made with respect to such information. Terms of sale or lease and availability are subject to change or withdrawal without notice.