

# MENLO PLACE

1060 Marsh Road | Menlo Park



± **10,995 SF** **AVAILABLE FOR LEASE**  
Class A Menlo Park Professional Office



**Newmark  
Knight Frank**

**HOWIE DALLMAR**

650.688.8530  
hdallmar@ngkf.com  
CA RE License #00864566

**KEVIN CUNNINGHAM**

650.688.8521  
kcunningham@ngkf.com  
CA RE License #01322886

**SARAH BOHANNON**

650.358.5268  
sbohannon@ngkf.com  
CA RE License #01940402

# PROJECT HIGHLIGHTS

Second Floor: ±10,995 Square Feet Available

Currently in Shell Condition

Major 2017 Renovation by DES Architects for Project Exteriors, Hardscape and Landscape

Neighboring Tenants Include  **LATHAM & WATKINS** LLP  **KILPATRICK TOWNSEND**

Walking Distance to Amenities

Shuttle to Downtown Menlo Park/Train Station

Parking 3.3/1000

Direct Lease from  **BOHANNON**



## MENLO PLACE

1060 Marsh Road | Menlo Park

### HOWIE DALLMAR

650.688.8530  
hdallmar@ngkf.com  
CA RE License #00864566

### KEVIN CUNNINGHAM

650.688.8521  
kcunningham@ngkf.com  
CA RE License #01322886

### SARAH BOHANNON

650.358.5268  
sbohannon@ngkf.com  
CA RE License #01940402

# RENOVATIONS COMPLETE!

Completely Renovated Building Core

## 2 Story Lobby:

Marble Floors, Plain Sliced, Walnut Wall Finishes, All Glass & Stainless Steel Grand Stair, Glass Curtain Wall with All Glass Entry Doors and Natural Light

## Elevator:

Stone & Stainless Steel Finishes

## Restrooms and Shower:

Marble & Tile Accents, All Glass Shower

## Upper Level Mother's Room:

Marble Finishes

Completely Renovated Building Exterior with Composite Metal Panel and Natural Stone Clad

New Landscape and Water Features Throughout



## MENLO PLACE

1060 Marsh Road | Menlo Park

### HOWIE DALLMAR

650.688.8530  
hdallmar@ngkf.com  
CA RE License #00864566

### KEVIN CUNNINGHAM

650.688.8521  
kcunningham@ngkf.com  
CA RE License #01322886

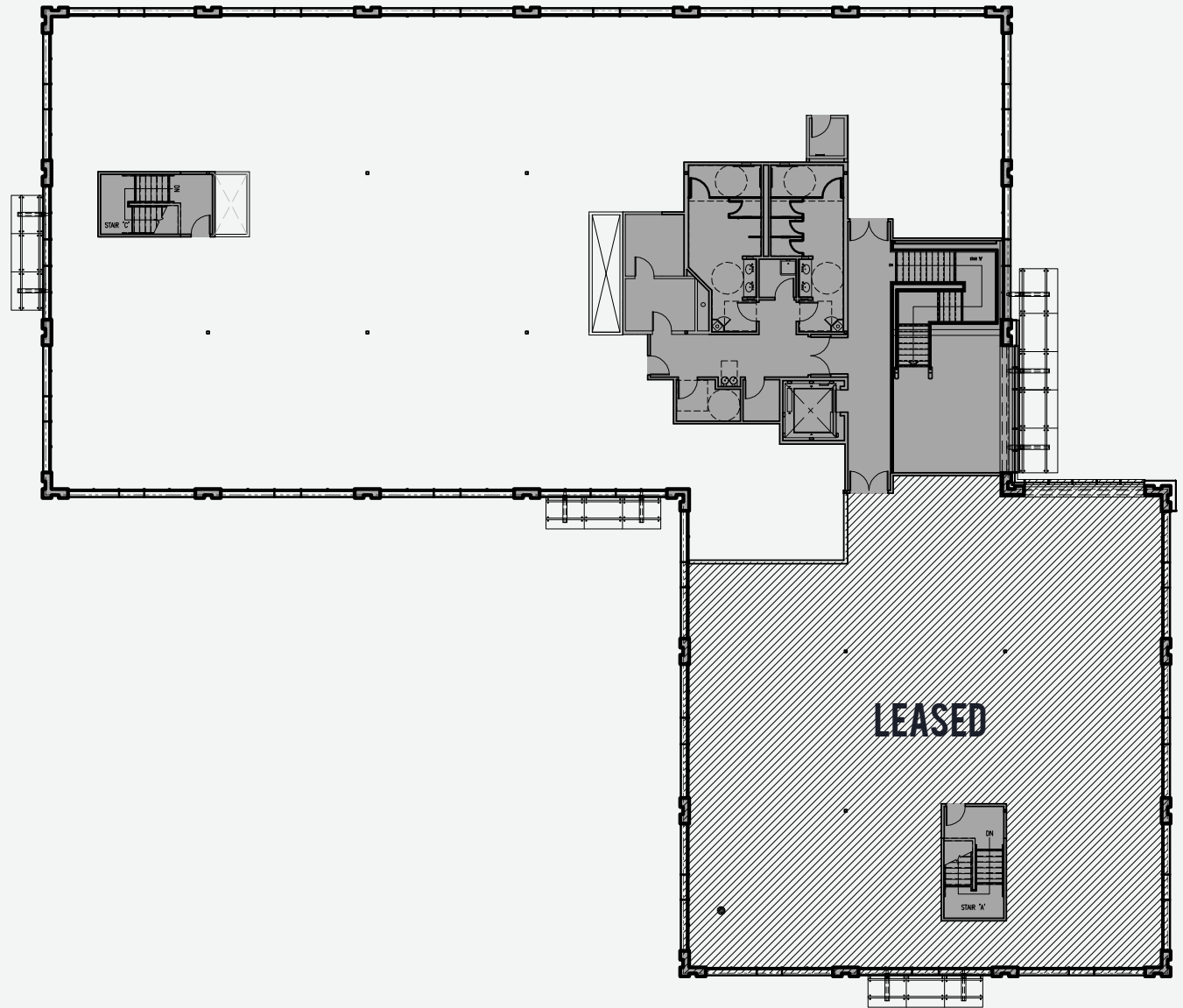
### SARAH BOHANNON

650.358.5268  
sbohannon@ngkf.com  
CA RE License #01940402

# FLOOR PLAN

Second Floor  
±10,995 Square Feet

Currently in Shell Condition



## **MENLO PLACE**

1060 Marsh Road | Menlo Park

### **HOWIE DALLMAR**

650.688.8530  
hdallmar@ngkf.com  
CA RE License #00864566

### **KEVIN CUNNINGHAM**

650.688.8521  
kcunningham@ngkf.com  
CA RE License #01322886

### **SARAH BOHANNON**

650.358.5268  
sbohannon@ngkf.com  
CA RE License #01940402



# MENLO PLACE

1060 Marsh Road | Menlo Park

## HOWIE DALLMAR

650.688.8530  
hdallmar@ngkf.com  
CA RE License #00864566

## KEVIN CUNNINGHAM

650.688.8521  
kcunningham@ngkf.com  
CA RE License #01322886

## SARAH BOHANNON

650.358.5268  
sbohannon@ngkf.com  
CA RE License #01940402

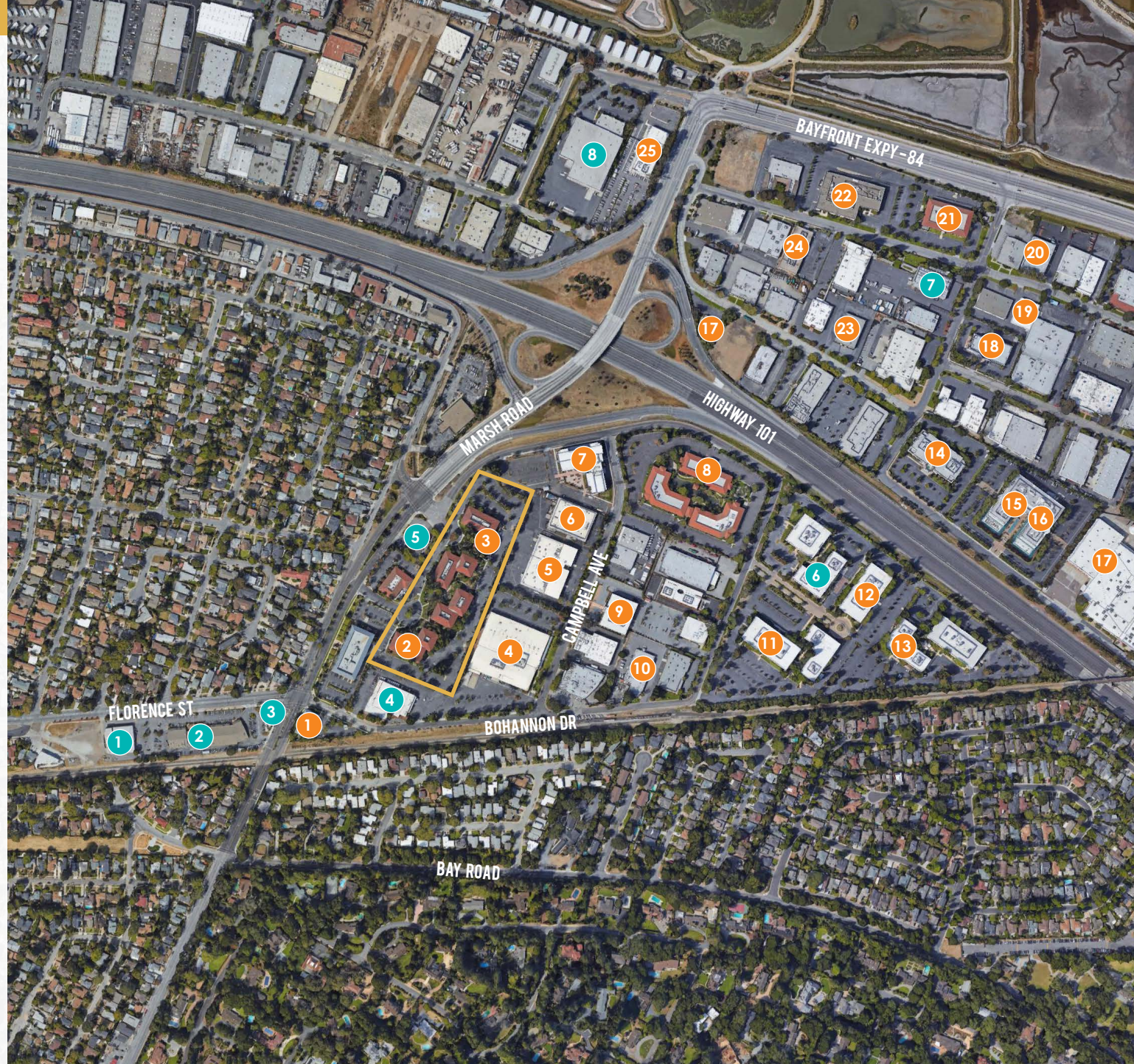
# AMENITIES

## NEARBY SERVICES

1. Delucchi's Market
2. Freewheel Brewing Company
3. Starbucks
4. U.S. Post Office
5. Chevron Menlo Park
6. Lee's Deli
7. Tacos Y Hamburguesas Toluco
8. FedEx Ship Center

## NEIGHBORING TENANTS

1. Kramer Levin Naftalis Frankel
2. Orrick, Herrington & Sutcliffe LLP
3. Kilpatrick Townsend
4. Abbott Vascular
5. EarLens Corporation
6. Memry Corporation
7. Hogan Lovells US LLP
8. Latham & Watkins LLP
9. Cellular Research Inc.
10. Apria Healthcare
11. Boardvantage
12. E Trade Financial
13. Next Issue Media LLC
14. Goodwin LLP Silicon Valley
15. Corcept Therapeutics
16. Exponent Inc
17. Facebook
18. SPACES - Menlo Park
19. OPPO Digital, Inc.
20. Sparta Science
21. AnchorFree
22. Lucid Motors
23. Neodyne Biosciences
24. Carr & Ferrell LLP
25. Quicken, Inc.



## MENLO PLACE

1060 Marsh Road | Menlo Park

### HOWIE DALLMAR

650.688.8530  
hdallmar@ngkf.com  
CA RE License #00864566

### KEVIN CUNNINGHAM

650.688.8521  
kcunningham@ngkf.com  
CA RE License #01322886

### SARAH BOHANNON

650.358.5268  
sbohannon@ngkf.com  
CA RE License #01940402

# SHUTTLE SCHEDULE

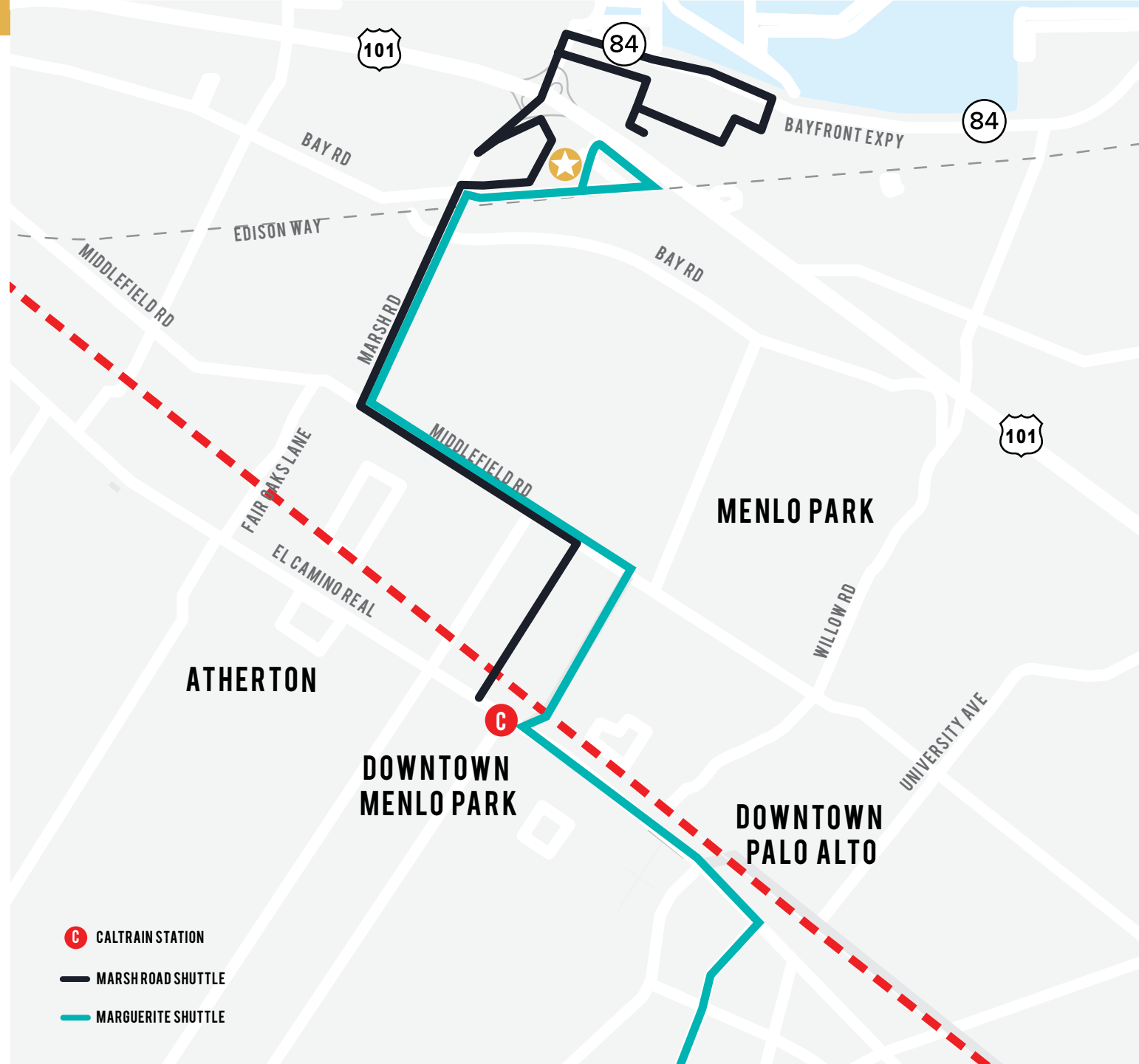
View Shuttle Schedules from Menlo Park Caltrain Station:

## Marsh Road Shuttle

Scott Dr & Marsh Road Stop  
Runs every 25-35 minutes

## Marguerite Shuttle

BOH Line  
Bohannon Drive Stop  
Runs every 10-30 minutes



**C** CALTRAIN STATION

— MARSH ROAD SHUTTLE

— MARGUERITE SHUTTLE

## MENLO PLACE

1060 Marsh Road | Menlo Park

### HOWIE DALLMAR

650.688.8530  
hdallmar@ngkf.com  
CA RE License #00864566

### KEVIN CUNNINGHAM

650.688.8521  
kcunningham@ngkf.com  
CA RE License #01322886

### SARAH BOHANNON

650.358.5268  
sbohannon@ngkf.com  
CA RE License #01940402

# MENLO PLACE

1060 Marsh Road | Menlo Park



## HOWIE DALLMAR

650.688.8530  
hdallmar@ngkf.com  
CA RE License #00864566

## KEVIN CUNNINGHAM

650.688.8521  
kcunningham@ngkf.com  
CA RE License #01322886

## SARAH BOHANNON

650.358.5268  
sbohannon@ngkf.com  
CA RE License #01940402



**Newmark  
Knight Frank**

Newmark Knight Frank

2950 South Delaware Street, Suite 125, San Mateo, CA 94403

The distributor of this communication is performing acts for which a real estate license is required. The information contained herein has been obtained from sources deemed reliable but has not been verified and no guarantee, warranty or representation, either express or implied, is made with respect to such information. Terms of sale or lease and availability are subject to change or withdrawal without notice.

17-1422-06/19