



21 RIVER ROAD | WILTON, CT

DEMOGRAPHICS

POPULATION

1 mile: 2,742

3 miles: 21,856

5 miles: 82,200

HOUSEHOLDS

1 mile: 1,112

3 miles: 21,856

5 miles: 82,200

AVG. HOUSEHOLD \$

1 mile: \$198,380

3 miles: \$238,686

5 miles: \$199,228



AVAILABLE: 8,981-18,440 SF

**GREAT OPPORTUNITY FOR ENTERTAINMENT,
MEDICAL OR FITNESS!**

Strategically located, residents know Wilton River Park is the retail heart of the town. There are only a few spaces left, they're your opportunity to establish your business as the "go-to" resource within the local community!

LOCAL RETAIL: Stop & Shop, Starbucks, Bright Horizons, The UPS Store and many more!

A TRUE EXCLUSIVE... CALL FOR THE DETAILS!

AGENTS:

Dominick Musilli

203.529.4629 | dm@truecre.com

Richard Schneider

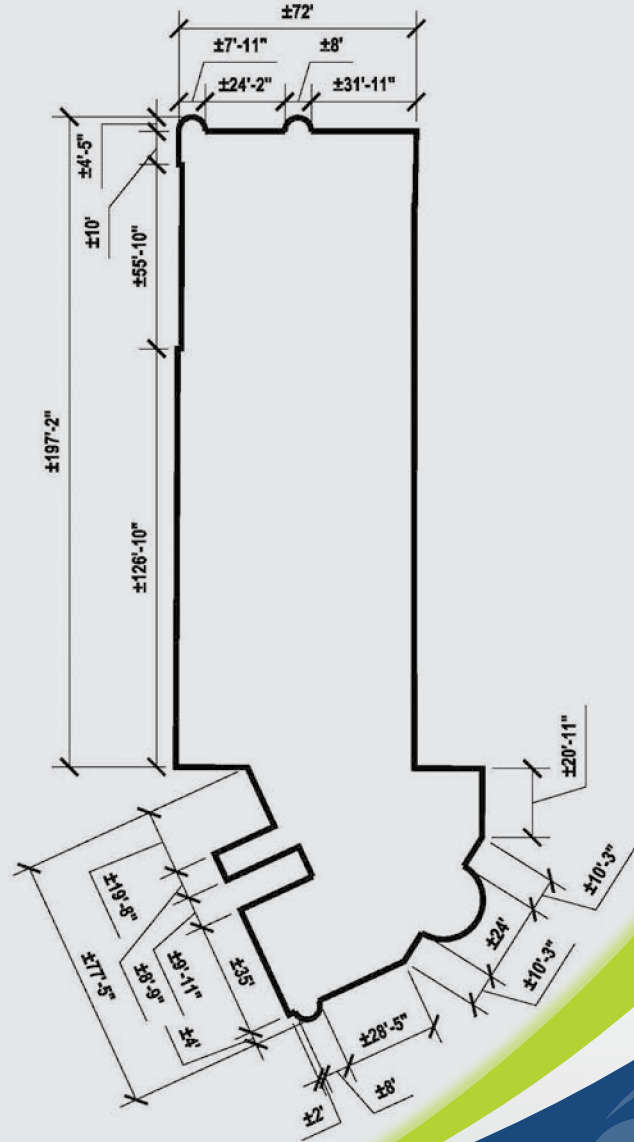
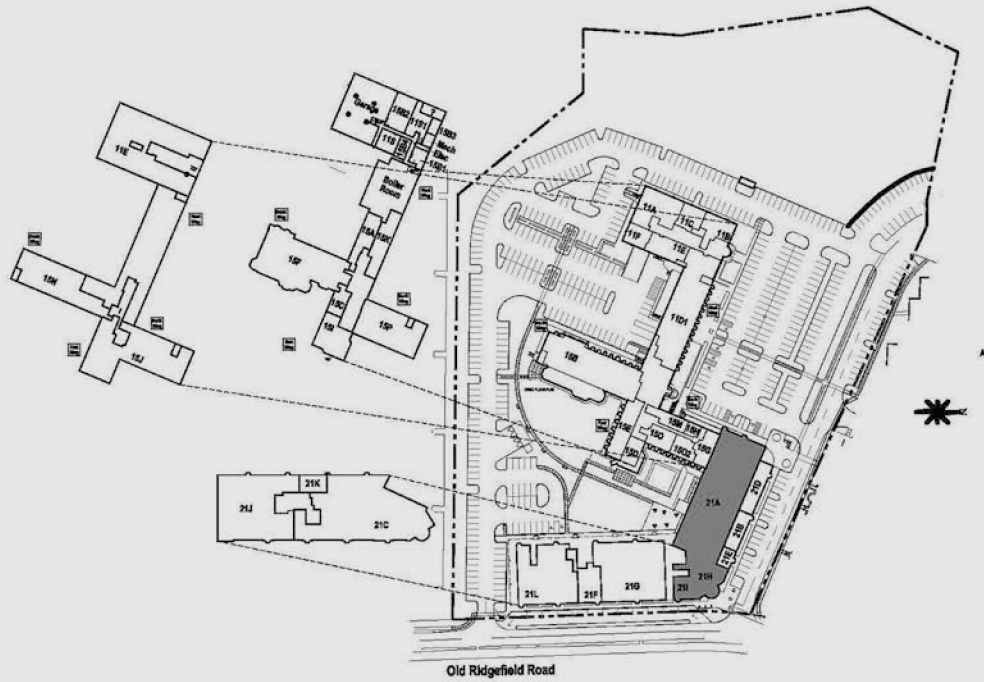
203.762.6173 | rs@truecre.com







21 RIVER ROAD | WILTON, CT

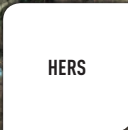
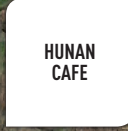




21 RIVER ROAD | WILTON, CT



SITE



ROUTE 7 | DANBURY ROAD | 24,000 VPD

