



Property Features

- Brand new 56,400 sf Class A Office Building
- **Special Lease Rate: \$21.50/SF, Full Service**
- Situated on 3.3 acres with 189 parking spaces
- Entrance at signalized corner
- Located just off I-64 at the entrance to Oyster Point Park

Available Suites

Suite	Square Footage
100	3,484 SF
120	3,484 SF
130	9,307 SF
200	2,500-17,132 SF
300	2,500-17,132 SF

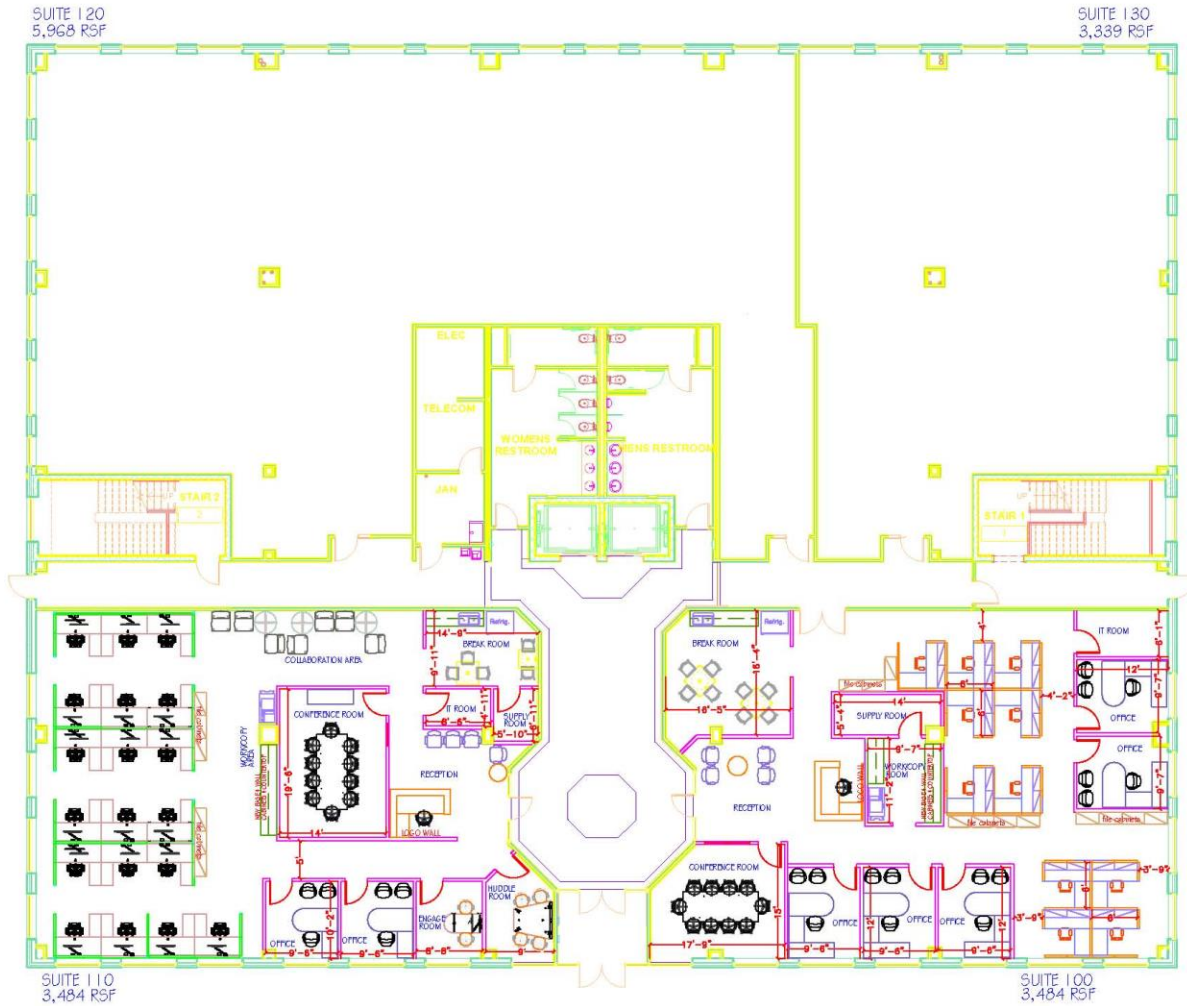
For more information, contact:

TERESA NETTLES
 Senior Vice President
 757 873 9268
teresa.nettles@thalhimer.com

One BayPort Way, Suite 100
 Newport News, VA 23606
www.thalhimer.com

Proposed Suites

(suites can be combined to create larger suites)



BEACON ONE
 FIRST FLOOR
 SAMPLE FLOOR PLANS

SCALE: N.T.S. DATE: 8/9/18
 DRAWN BY: K.L.MONETTE 757.214.1345

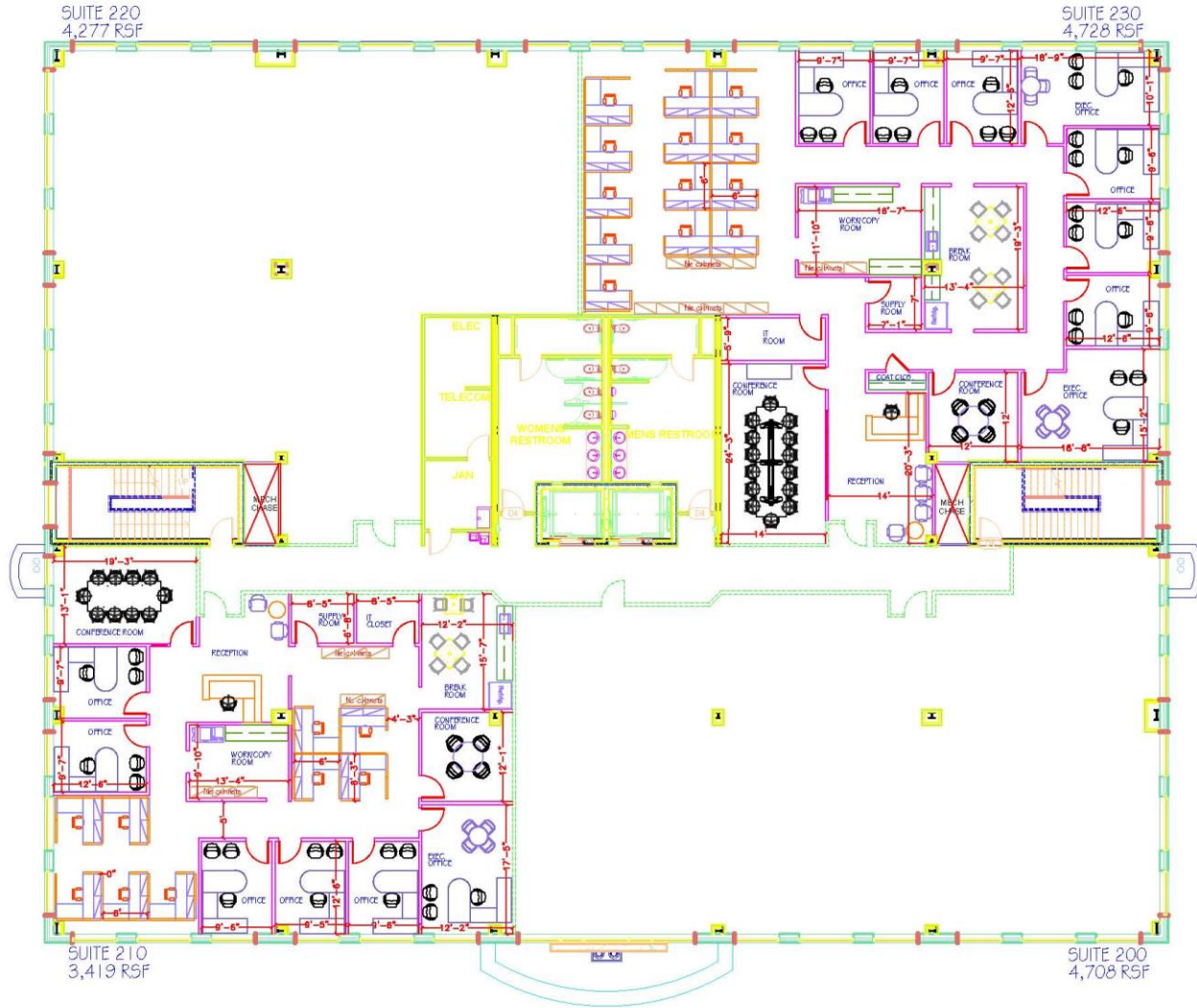
For more information, contact:

TERESA NETTLES
 Senior Vice President
 757 873 9268
 teresa.nettles@thalhimer.com

One BayPort Way, Suite 100
 Newport News, VA 23606
 www.thalhimer.com

Proposed Suites

(suites can be combined to create larger suites)



BEACON ONE
 SECOND & THIRD FLOOR
 SAMPLE FLOOR PLANS

SCALE: N.T.S. DATE: 8/9/18
 DRAWN BY: K.L.MONETTE 757.214.1345

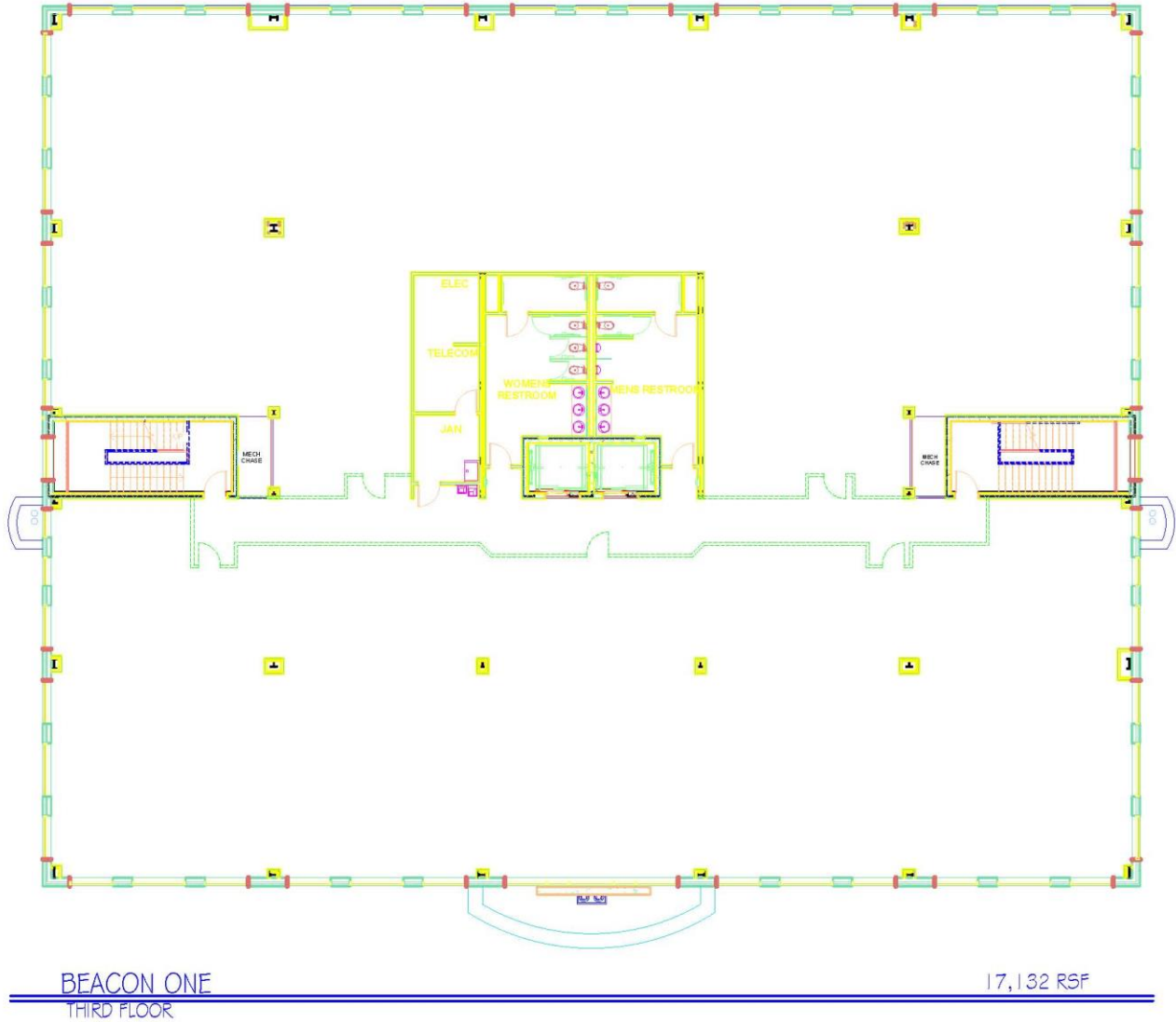
For more information, contact:

TERESA NETTLES
 Senior Vice President
 757 873 9268
 teresa.nettles@thalhimer.com

One BayPort Way, Suite 100
 Newport News, VA 23606
 www.thalhimer.com

Proposed Suites

(suites can be combined to create larger suites)

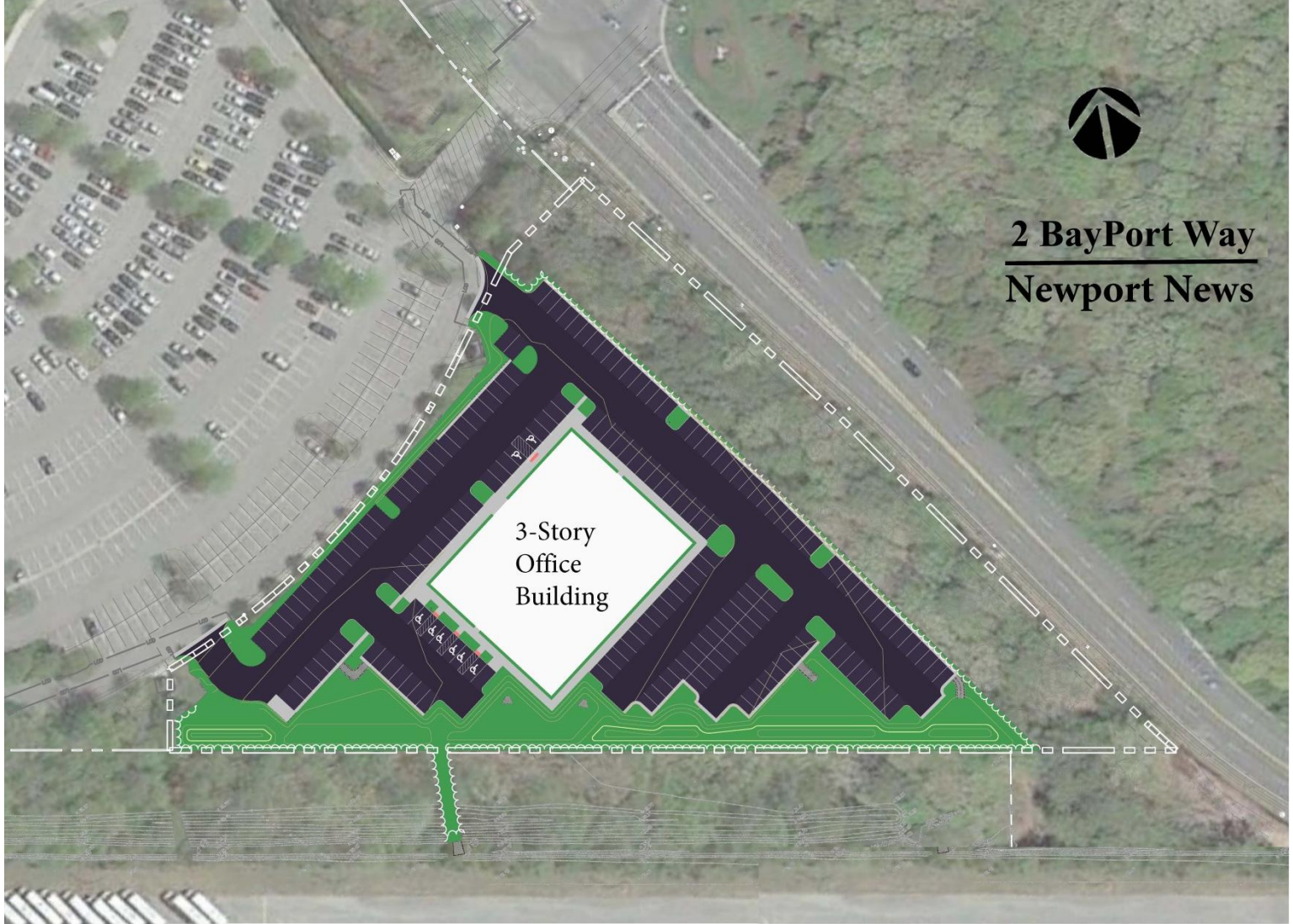


For more information, contact:

TERESA NETTLES
Senior Vice President
757 873 9268
teresa.nettles@thalhimer.com

One BayPort Way, Suite 100
Newport News, VA 23606
www.thalhimer.com

Site Plan



For more information, contact:

TERESA NETTLES
Senior Vice President
757 873 9268
teresa.nettles@thalhimer.com

One BayPort Way, Suite 100
Newport News, VA 23606
www.thalhimer.com