



NORTHMEADOW



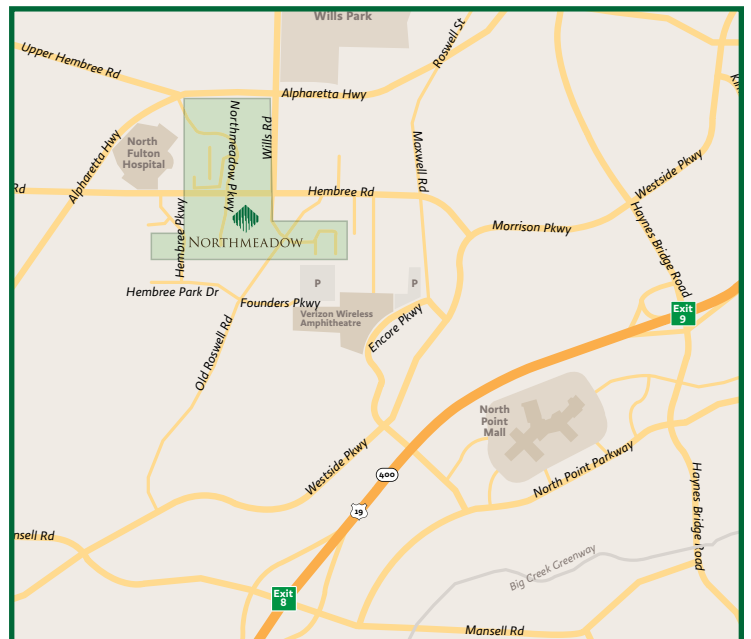
View more at
NORTHMEADOWATLANTA.COM

11820 WILLS RD

Alpharetta, Georgia 30009

FEATURES

- 103,892 SF Office/Warehouse Building
- 0%-35% Office Finish
- Dock-High Loading
- 24' Ceiling Height
- Ample Parking
- Attractive Brick-on-Block Construction
- Heavily Landscaped Park Setting
- 20 Building Portfolio Totaling 1.2M SF on 125 Acres
- On-site Property Management and Leasing
- Fiber Optics Available
- Close Proximity to GA 400



STEPHEN POND

404 812 4067
spond@naibg.com

DAVID BEAK

404 812 4064
dbeak@naibg.com

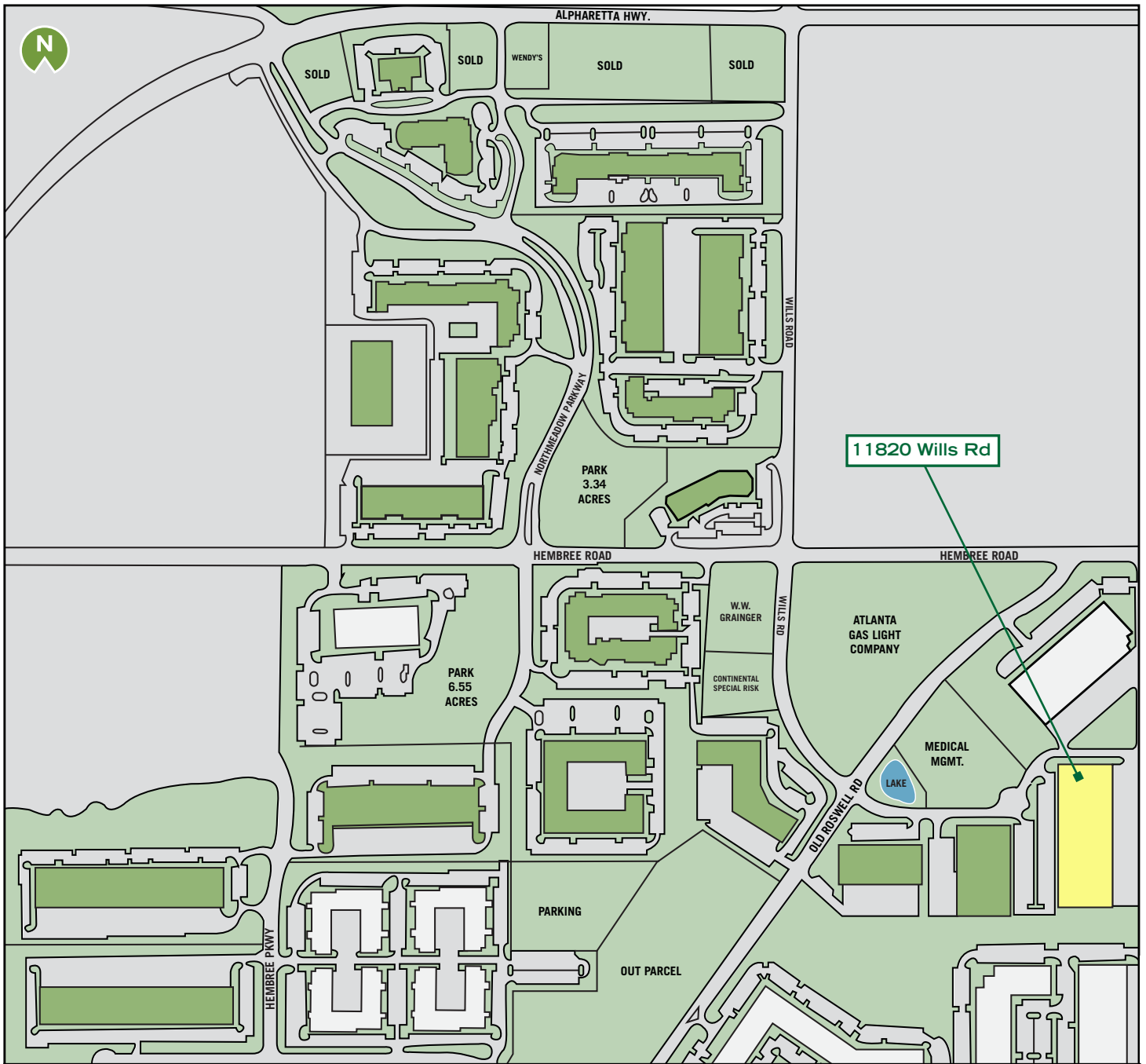
NAI Brannen Goddard

OWNED BY AN AFFILIATE OF

EQUUS
CAPITAL PARTNERS, LTD.



NORTHMEADOW



**FOR LEASING
INFORMATION:**

STEPHEN POND

404 812 4067

spond@naibg.com

DAVID BEAK

404 812 4064

dbeak@naibg.com

NAI Brannen Goddard

5555 Glenridge Connector, Suite 1100, Atlanta, GA 30342 | 404 812 4000 | naibg.com

Information is deemed from reliable sources. No warranty is made as to its accuracy.

OWNED BY AN AFFILIATE OF

EQUUS
CAPITAL PARTNERS, LTD.



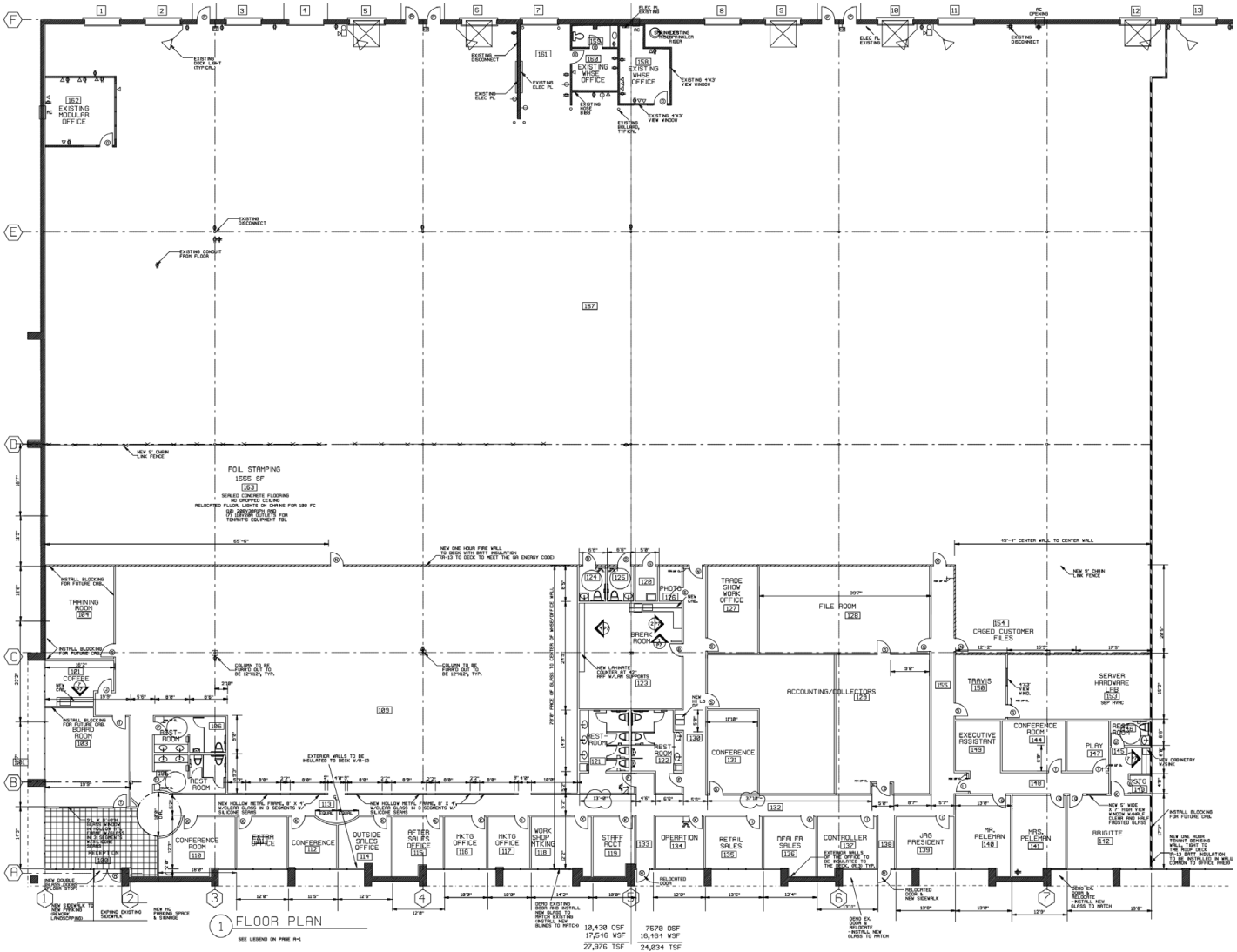
NORTHMEADOW

11820 WILLS RD

Suite 100 / 52,000 SF

35% Office

12 Dock-High Doors



FOR LEASING
INFORMATION:

STEPHEN POND
404 812 4067
spond@naibg.com

DAVID BEAK
404 812 4064
dbeak@naibg.com



5555 Glenridge Connector, Suite 1100, Atlanta, GA 30342 | 404 812 4000 | naibg.com

Information is deemed from reliable sources. No warranty is made as to its accuracy.

OWNED BY AN AFFILIATE OF

