

**1792 TRIBUTE RD  
SACRAMENTO, CA**

**FOR LEASE**

**1,682 RSF - 9,565 RSF**

**OFFICE SUITES AVAILABLE**

**ETHAN CONRAD**  
PROPERTIES INC.



**MAJOR REMODEL COMPLETED**

FOR MORE INFORMATION CONTACT:

**Grant Keeney**  
DRE: #00891996  
grant@ethanconradprop.com

**Ethan Conrad**  
DRE: #01298662  
ethan@ethanconradprop.com

**VIEW VIRTUAL TOUR**

**916.779.1000**

ETHAN CONRAD PROPERTIES, INC.  
1300 NATIONAL DRIVE, SUITE 100 | SACRAMENTO CA, 95834 | FAX: 916.779.1200  
www.ethanconradprop.com

## FEATURES:

- Four story ±45,000 RSF Class A Office
- Prominent freeway visibility
- Immediate access to Bus 80 and Expo Blvd.
- Parking ratio 4:1,000 SF; 25 covered stalls
- Walking distance to Marriott Hotels
- Numerous retail amenities nearby
- Rapid access to Downtown Sacramento

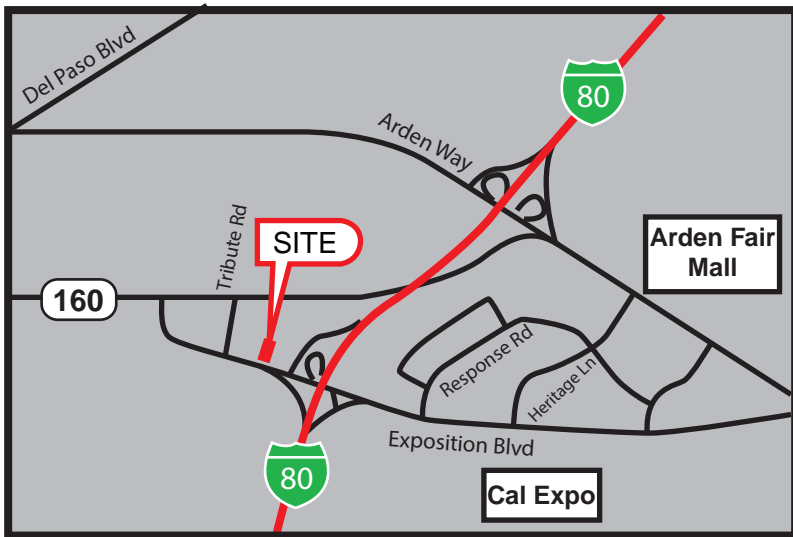
## PROPERTY DETAILS:

- Move in ready suite
- Flexible and efficient layout
- Building top signage available
- Ground floor showers & lockers
- Suite 300 - (9,565 RSF) has 50 modern cubicles, chairs and file cabinets available

## LEASE RATES:

Suite 300:	±6,000 RSF - 9,565 RSF	\$1.75 - \$1.89 PSF, Full Service*
Suite 400:	1,682 RSF	\$1.79 PSF, Full Service
Suite 455:	3,431 RSF	\$1.79 PSF, Full Service

\*Additional \$0.10 PSF for cubicles.

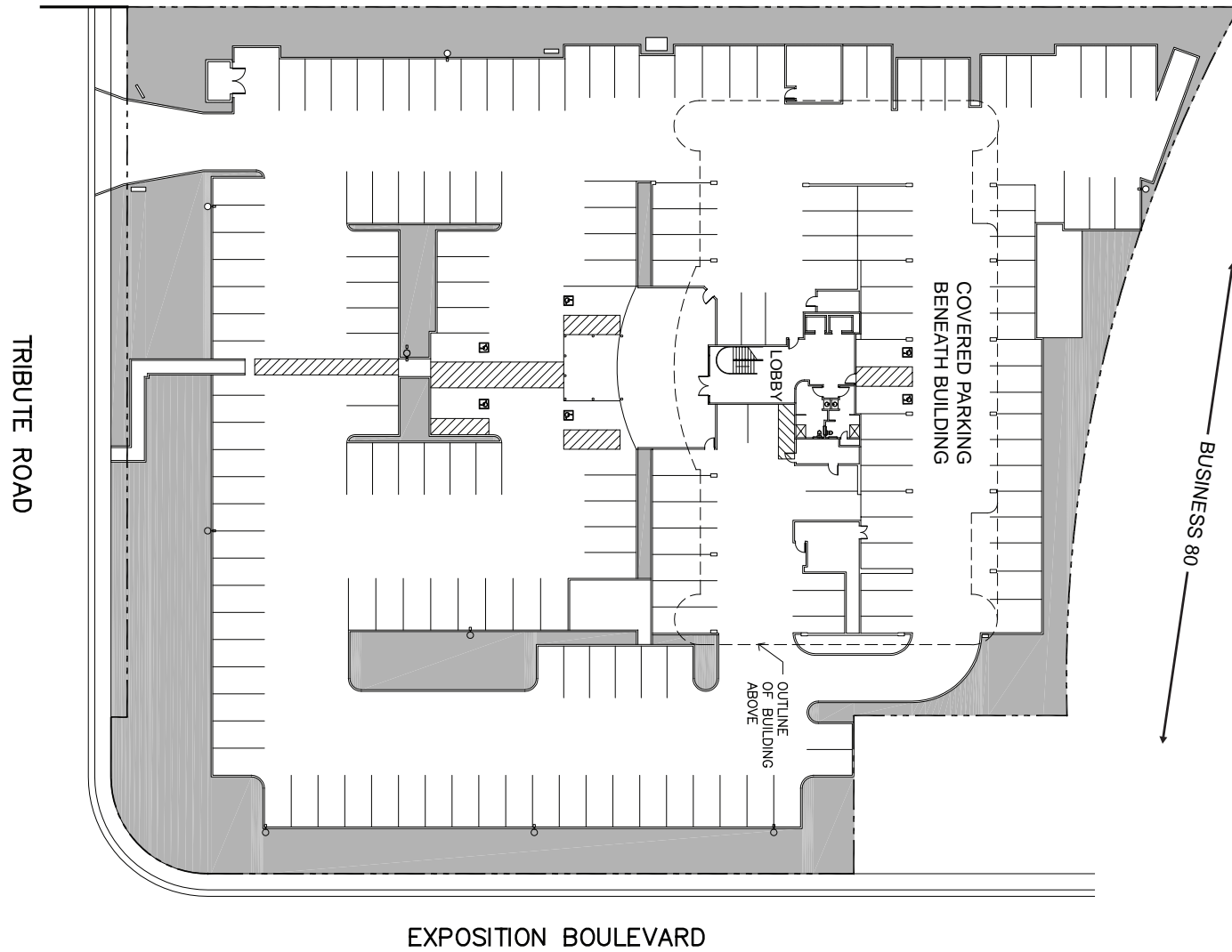


**ETHAN CONRAD PROPERTIES, INC.**

1300 NATIONAL DRIVE, SUITE 100 | SACRAMENTO CA, 95834 | 916.779.1000  
www.ethanconradprop.com

The information contained herein has been obtained from sources we believe to be reliable. However, we cannot guarantee, warrant or represent its accuracy and all information is subject to error, change or withdrawal. An interested party and their advisors should conduct an independent investigation of the property to determine to your satisfaction the suitability of the property for your needs.

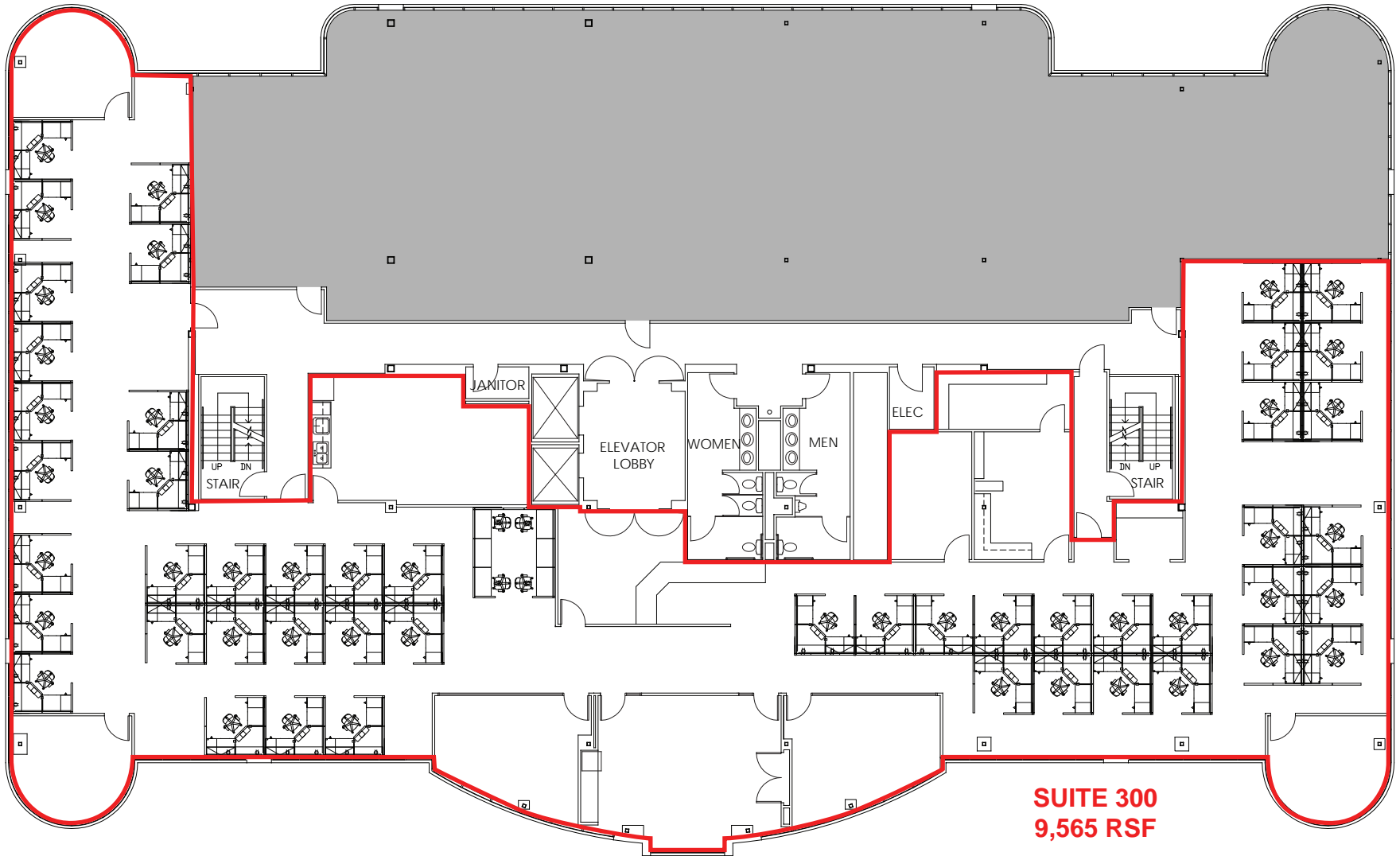
SITE PLAN



**ETHAN CONRAD PROPERTIES, INC.**  
1300 NATIONAL DRIVE, SUITE 100 | SACRAMENTO CA, 95834 | 916.779.1000  
[www.ethanconradprop.com](http://www.ethanconradprop.com)

The information contained herein has been obtained from sources we believe to be reliable. However, we cannot guarantee, warrant or represent its accuracy and all information is subject to error, change or withdrawal. An interested party and their advisors should conduct an independent investigation of the property to determine to your satisfaction the suitability of the property for your needs.

3RD FLOOR

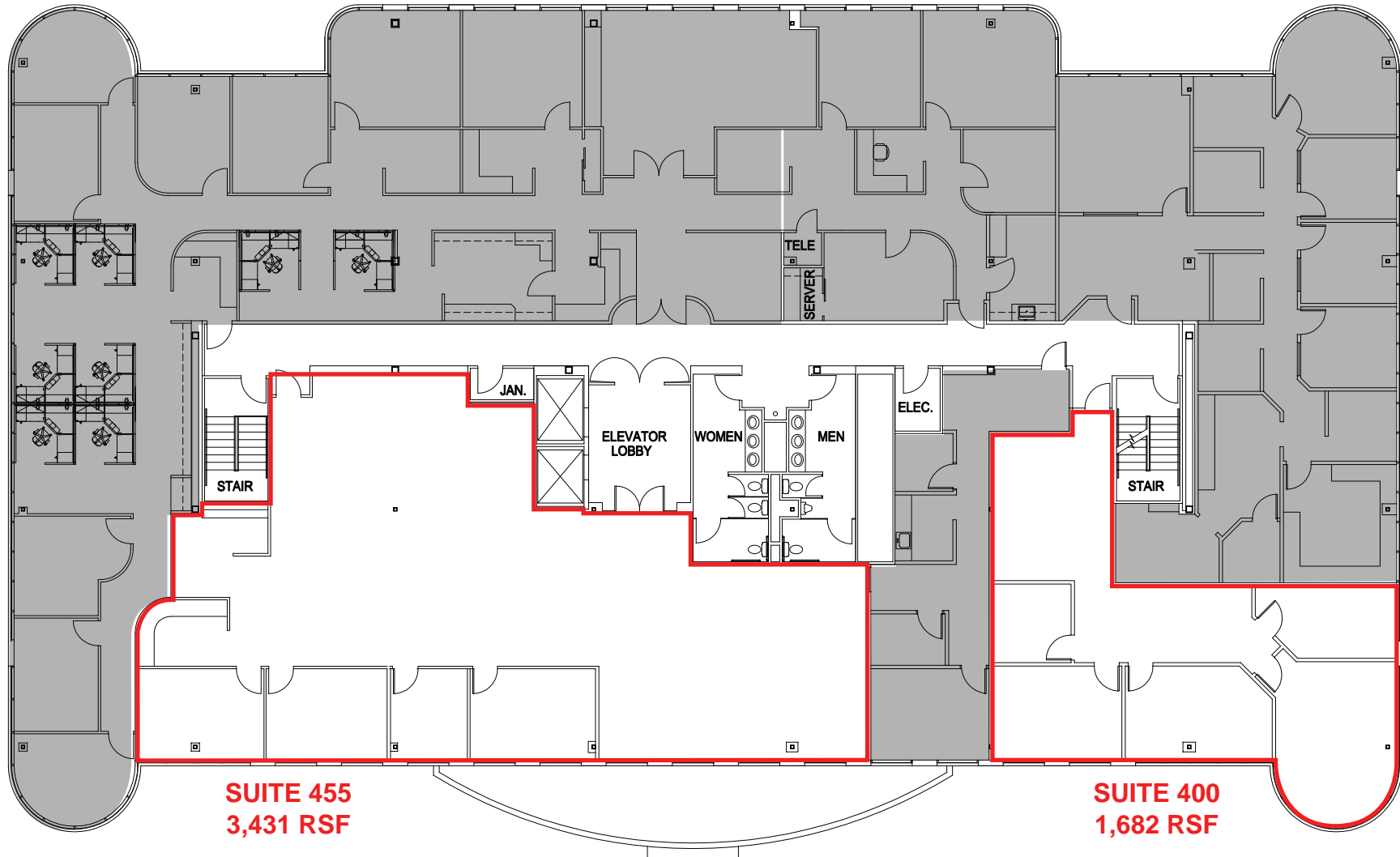


**SUITE 300**  
**9,565 RSF**

**ETHAN CONRAD PROPERTIES, INC.**  
1300 NATIONAL DRIVE, SUITE 100 | SACRAMENTO CA, 95834 | 916.779.1000  
[www.ethanconradprop.com](http://www.ethanconradprop.com)

The information contained herein has been obtained from sources we believe to be reliable. However, we cannot guarantee, warrant or represent its accuracy and all information is subject to error, change or withdrawal. An interested party and their advisors should conduct an independent investigation of the property to determine to your satisfaction the suitability of the property for your needs.

4TH FLOOR



**SUITE 455**  
**3,431 RSF**

**SUITE 400**  
**1,682 RSF**

**ETHAN CONRAD PROPERTIES, INC.**  
1300 NATIONAL DRIVE, SUITE 100 | SACRAMENTO CA, 95834 | 916.779.1000  
[www.ethanconradprop.com](http://www.ethanconradprop.com)

The information contained herein has been obtained from sources we believe to be reliable. However, we cannot guarantee, warrant or represent its accuracy and all information is subject to error, change or withdrawal. An interested party and their advisors should conduct an independent investigation of the property to determine to your satisfaction the suitability of the property for your needs.



**ETHAN CONRAD PROPERTIES, INC.**

1300 NATIONAL DRIVE, SUITE 100 | SACRAMENTO CA, 95834 | 916.779.1000

[www.ethanconradprop.com](http://www.ethanconradprop.com)

The information contained herein has been obtained from sources we believe to be reliable. However, we cannot guarantee, warrant or represent its accuracy and all information is subject to error, change or withdrawal. An interested party and their advisors should conduct an independent investigation of the property to determine to your satisfaction the suitability of the property for your needs.