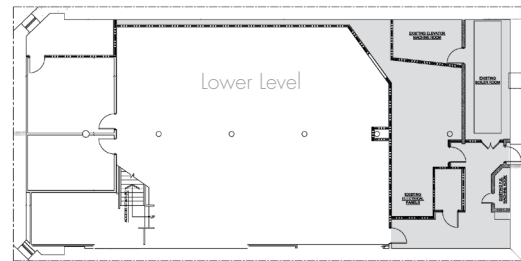
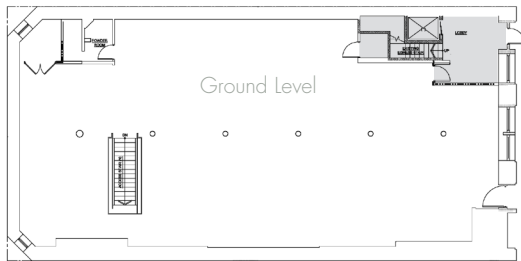




# 155 WOOSTER STREET

Between Prince & West Houston Streets



Ground Level: 4,750 Square Feet | Lower Level: 3,500 Square Feet | Frontage: 25'

Ceiling Height: 13' 9" (Ground), 9' 6" (Lower) | Asking Rent: Please Inquire

## NOTES:

- Turnkey bi-level store with architectural staircase
- Skylight at rear
- All uses considered
- Divisible
- First time available in 20 years

## NEIGHBORS:

- Cassina
- Cappellini
- Stepevi
- Poltrona Frau
- Flor
- Mansur Gavriel
- Diane von Furstenberg

**HOUSTON STREET**

- STARBUCKS
- AXELLE GALERE
- LUMAS GALLERY
- Scaphno
- GEORGE BERGES GALLERY
- Leica
- DTR MODERN GALLERIES
- AVEDA
- Han Svanberg
- G-SHOCK
- benefit
- LAMY
- NATIONAL GEOGRAPHIC
- ICE & THE JUICE
- Ragha.
- HAPPY SOCKS

**THOMPSON STREET**

**WEST BROADWAY**

- RIS GAMINOS
- BIRCH
- ANITA DONGRE
- ARI
- HARBS CAKE SHOP
- CUTLER SALON
- SADELLE'S
- SOHO WINES
- MARTIN LAWRENCE GALLERY
- THINK PINK
- EVER/BODY
- HALSTEAD PROPERTY
- CASPER
- LOUIS HASEL
- TAFT
- FAIRY
- UNICKIT
- JOHNNY WAS

**155**

**Cassina**

**STEPEVI**

**Poltrona Frau**

**DF**

**WOOSTER STREET**

- bulthaup
- VANLEEUWEN
- TERRAIN GALLERY
- POMEGRANATE GALLERY
- DIOR HOMME
- FLOR
- NANUSHKA
- WARBY PARKER
- MANSUR GAVRIEL
- PROENZA SCHOUER
- sandro
- RAULI LAUREN
- UNO 50
- SCHUTZ
- SCANLAN THEODORE
- FALCONERI
- MONCLER
- THE MERCER HOTEL

**HOUSTON STREET**

- FLOS
- 260
- SAMPLE SALE
- MOROSO
- Paul Smith
- poggen pohl
- BRUNELLO CUCINELLI
- HUGO
- VERSANI
- 45 RPM
- MARNI
- DOLCE & GABBANA
- ZADIG & VOLTAIRE
- TOBY BURCH
- BALENCIAGA
- LANVIN
- BALENCIAGA
- & other Stories
- VERIZON
- ALDO
- DONT ASK WHY
- PRADA

**HOUSTON STREET**

- HOUSTON
- sunglass hut
- DESIGUAL
- EXPRESS / EXPRESS MEN
- ZARA
- FOREVER 21
- ARTISTS & FLEA

**PRINCE STREET**

- XOCOLATTI
- BROOKBATH BAKERY
- LA BURDICK CHOCOLATE
- LA COIOMBE
- CHOBANI
- Aesop
- FUN SOCKS
- SHIRO
- MOLESKINE
- VLEBEQUIN
- RYING SOLO
- LA PERLA
- MISSONI
- BRISTOL CONNECTION
- BRAVISIMO
- FRANKLIN BOWLES GALLERY
- SCAVOLINI
- ALEX AND ANI
- SEE
- doob
- UK GALLERY
- COLE HAAN
- Barbour
- WOOLRICH
- TED BAKER

**PRINCE STREET**

- PLATS PLAS
- NALS
- Ilva
- Selle
- JOHN HARRY
- SOWER
- DAVID YURMAN
- COMBER
- DOA
- tibi
- ELOQUII
- LEESA
- EQUIPMENT
- JIMMY CHOO
- LINDA FARROW
- DIOR HOMME
- Dior
- SONOS

**GREENE STREET**

- V
- TUMI
- MIU MIU
- INTERMIX
- FANELI CAPE
- LV
- STELLA MCCARTNEY
- DESIGN WITHIN REACH
- Agent Provocateur
- A.P.C.
- JOURNELLE
- rag & bone
- The Kooples
- NESPRESSO
- MONCLER
- HUGO
- MANGO
- SCHOLASTIC
- SEPHORA
- BOSS HUGO BOSS
- CLARKS
- PINK
- DEAN & DE
- CONVERSE
- H&M
- BANANA REPUBLIC
- HSBC
- UNI QLO
- STEVE MADDEN

**PRINCE STREET**

**BROADWAY**

## PLEASE CONTACT:

**Christopher Owles**

212.604.9002

chris@sinvin.com

**Sarah Shannon**

646.673.8780

sarah@sinvin.com

**SINVIN**  
COMMERCIAL REAL ESTATE & ADVISORY

