

465 PLAZA

465 South 400 East, Salt Lake City, Utah 84111

465 PLAZA

465 South 400 East, Salt Lake City, Utah 84111



\$50 FOR QUALIFIED TOURS

FOR LEASE

\$21.50/RSF FULL SERVICE

PROPERTY FEATURES

- 4,000 – 49,666 RSF Total Available
 - Suite 100: 15,695 RSF (Divisible to 4,000 SF)
 - Suite 200: 8,750 RSF
 - Suite 300: 25,221 RSF (Full Floor Opportunity)
- 3.8/1,000 Per RSF Parking
- Parking No Additional Charge
- TRAX 1 Block Away
- Walking Distance to Downtown Amenities
- Easy Access to I-15

FOR MORE INFORMATION CONTACT

CASEY MILLS, CCIM, SIOR
801.578.5556
casey.mills@ngkf.com

COLLIN PERKINS, MBA
801.578.5575
collin.perkins@ngkf.com

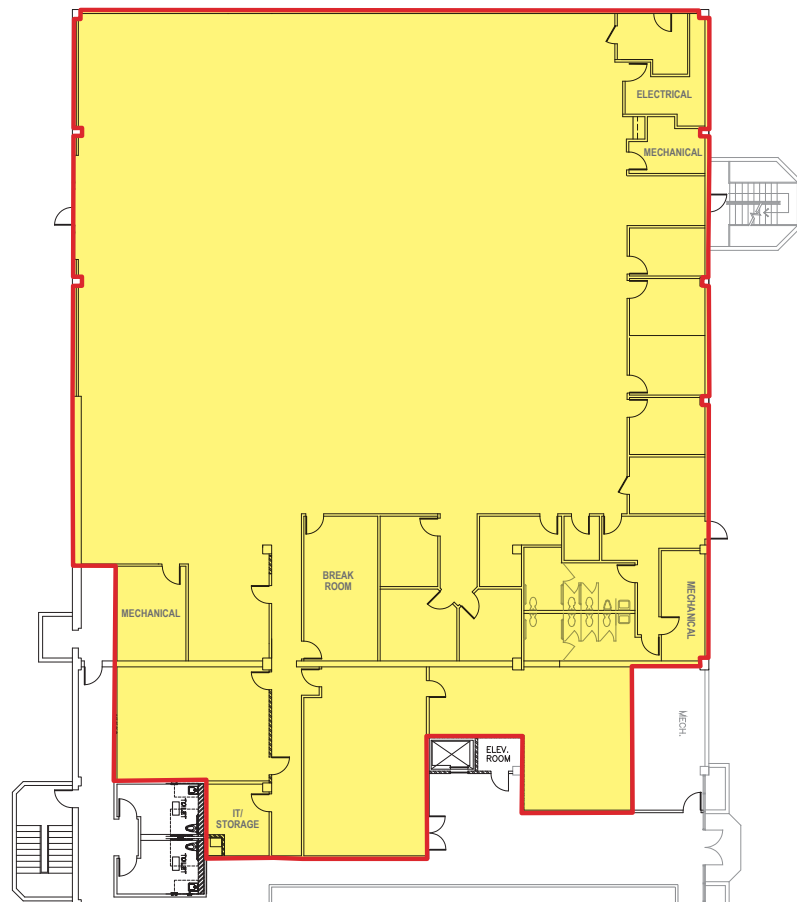
DEREK SAWAYA
801.746.4730
derek.sawaya@ngkf.com

465 PLAZA

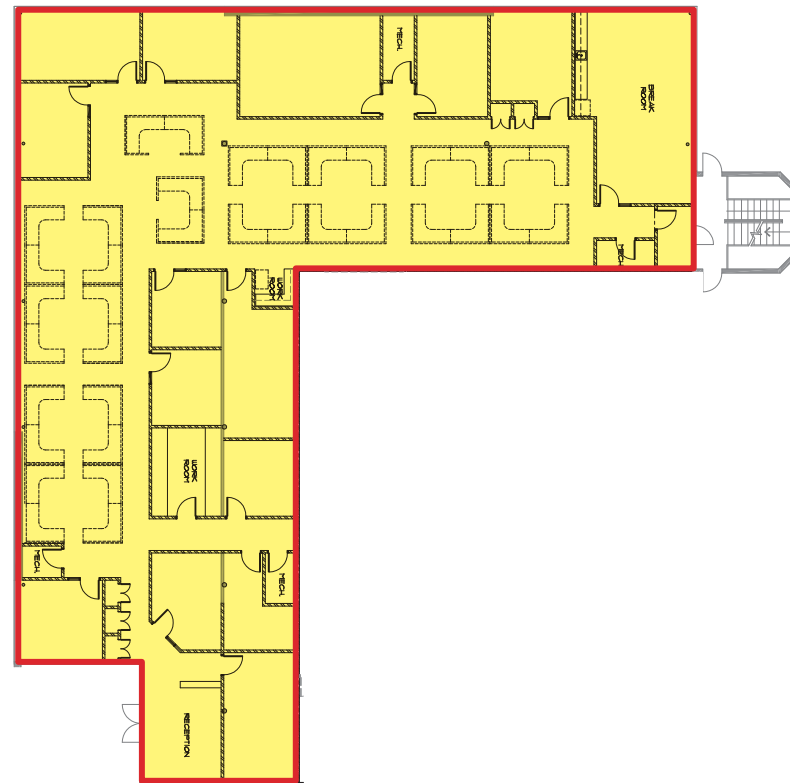
465 South 400 East, Salt Lake City, Utah 84111



SUITE 100
15,695 RSF
DIVISIBLE TO 4,000 SF
\$16.50/RSF FULL SERVICE



SUITE 200
8,750 RSF
\$21.50/RSF FULL SERVICE



SUITE 300
25,221 RSF
\$21.50/RSF FULL SERVICE

