

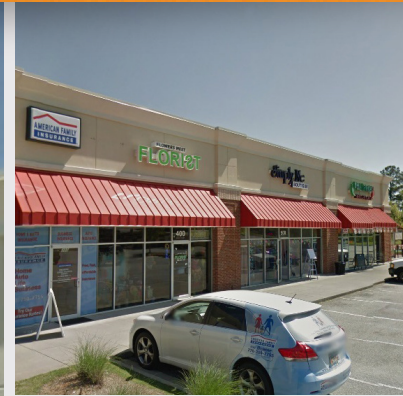
# ACWORTH COMMONS

3344 Cobb Parkway, Acworth, GA 30101

1,000 SQ FT AVAILABLE FOR LEASE



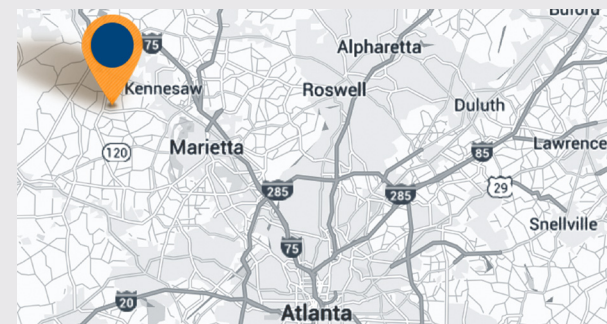
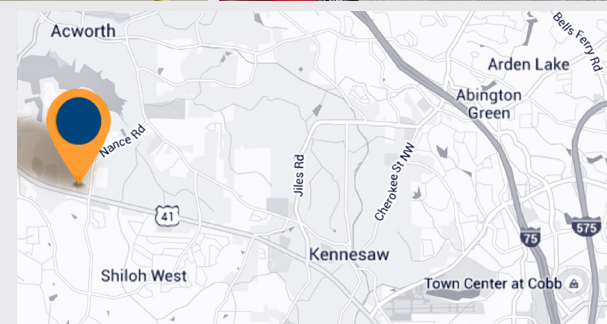
SKYLINE SEVEN  
REAL ESTATE



## PROPERTY HIGHLIGHTS

- Staples anchored Kohl's shadow center
- Great access with plenty of parking
- Located at signalized intersection of Cobb Parkway and Acworth Summit Blvd
- Growing population with strong demographics
- 29,150 VPD on Cobb Parkway

Demographics	1 Miles	3 Miles	5 Miles
Population	5,533	48,290	124,866
Households	1,866	16,657	43,525
Average HH Income	\$89,568	\$93,441	\$95,176



For leasing information, please contact:

- Christina Bridge  
404.812.8915  
cbridge@skylineseven.com

SKYLINE SEVEN REAL ESTATE

5825 Glenridge Drive  
Building 1, Suite 206  
Atlanta, GA 30328  
www.skylineseven.com

Main: 404.812.8910  
Fax: 678.916.4149  
info@skylineseven.com

# ACWORTH COMMONS // SITE PLAN

STE	TENANT	SF
90	Serene Nails	1,352
100	Giltzy Chiks	5,000
200	Staples	20,597
300	AVAILABLE	1,000
400	Flowers West Florist	3,400
500	Bubble Tea	1,620
600	Poblanos Mexican Grill	3,200



© Copyright 2014 Skyline Seven Real Estate. All rights reserved.

**SKYLINE SEVEN REAL ESTATE**

5825 Glenridge Drive  
 Building 1, Suite 206  
 Atlanta, GA 30328  
[www.skylineseven.com](http://www.skylineseven.com)

Main: 404.812.8910  
 Fax: 678.916.4149  
[info@skylineseven.com](mailto:info@skylineseven.com)