

**Contact:**

**Grant Horton**

614 571 1182

[grant.horton@colliers.com](mailto:grant.horton@colliers.com)

**Colliers**



**5555**

**Glendon Court**

# Property Highlights

Full floor available (divisible)  
Four-story 132,854 RSF office built in 1995  
Parking ratio of 5.0 / 1,000 RSF  
Conveniently located near Tuttle Crossing Mall and area amenities  
Excellent visibility along I-270  
Operating Expenses estimated to be \$11.88/SF

---

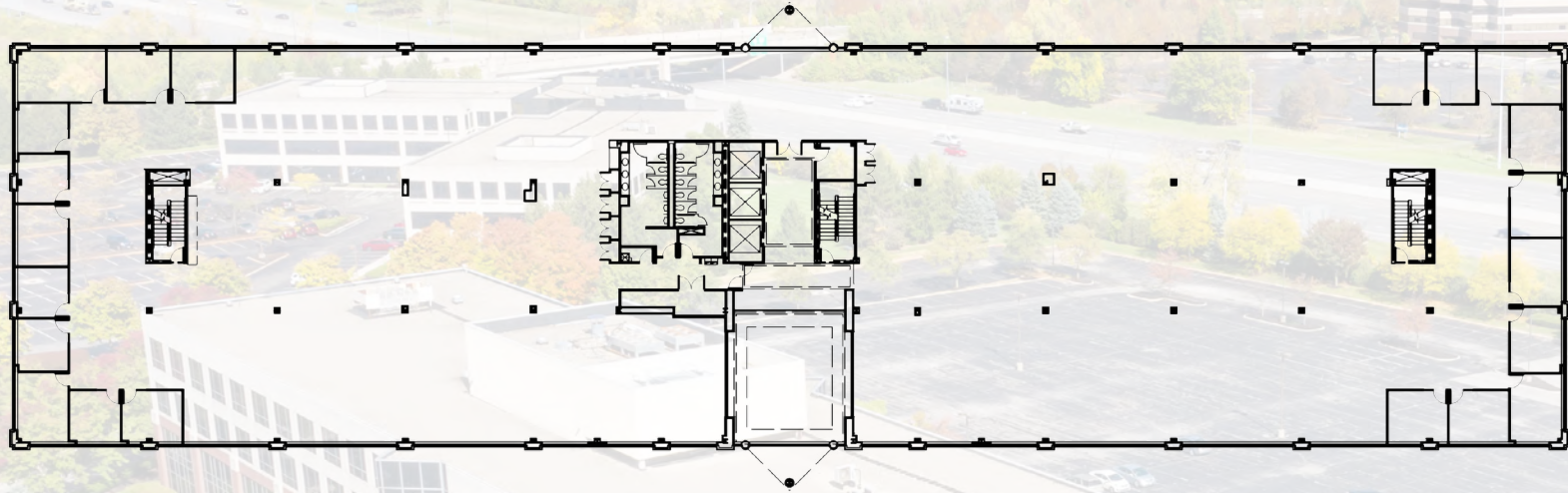
**\$19 FSG**

**5,000-33,250 SF available**

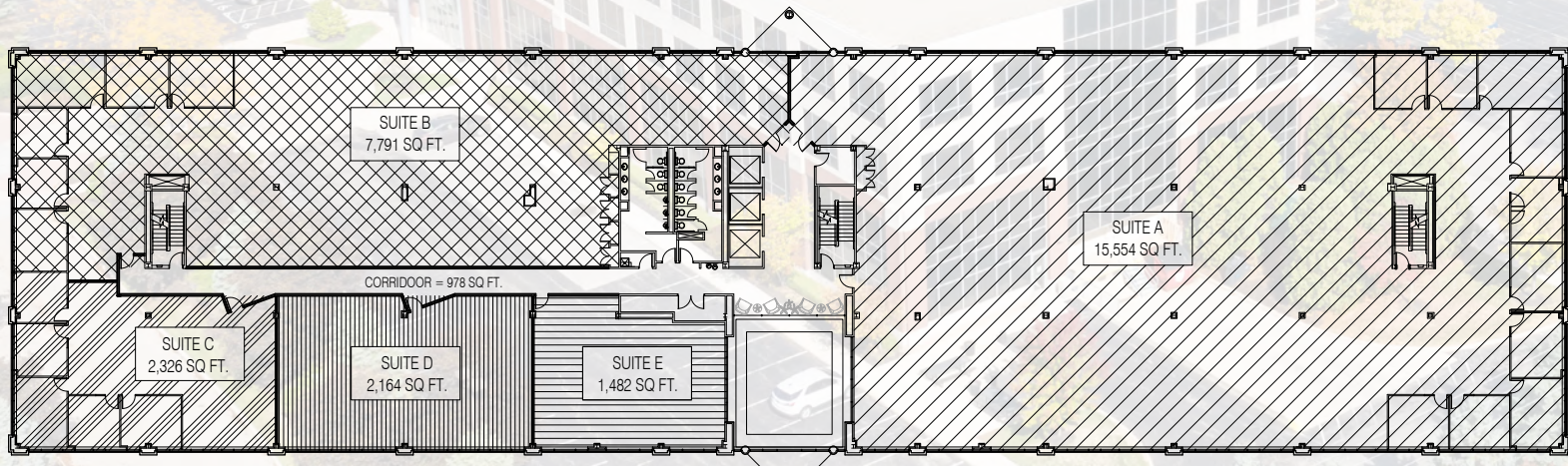


# Suite 200

33,250 SF *divisible*



Example multi-tenant floorplan



# Photo Gallery



**CLICK OR SCAN  
FOR VIRTUAL  
TOUR**



# Area Amenities

## Drive Time .....



Tuttle Crossing Mall  
The Corners  
Historic Dublin

5 min  
4 min  
8 min

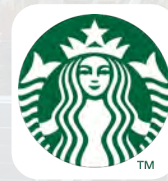
Bridge Park  
John Glenn Airport

8 min  
22 min

## Nearby Dining



RESTAURANT  
BREWHOUSE



Bob Evans®

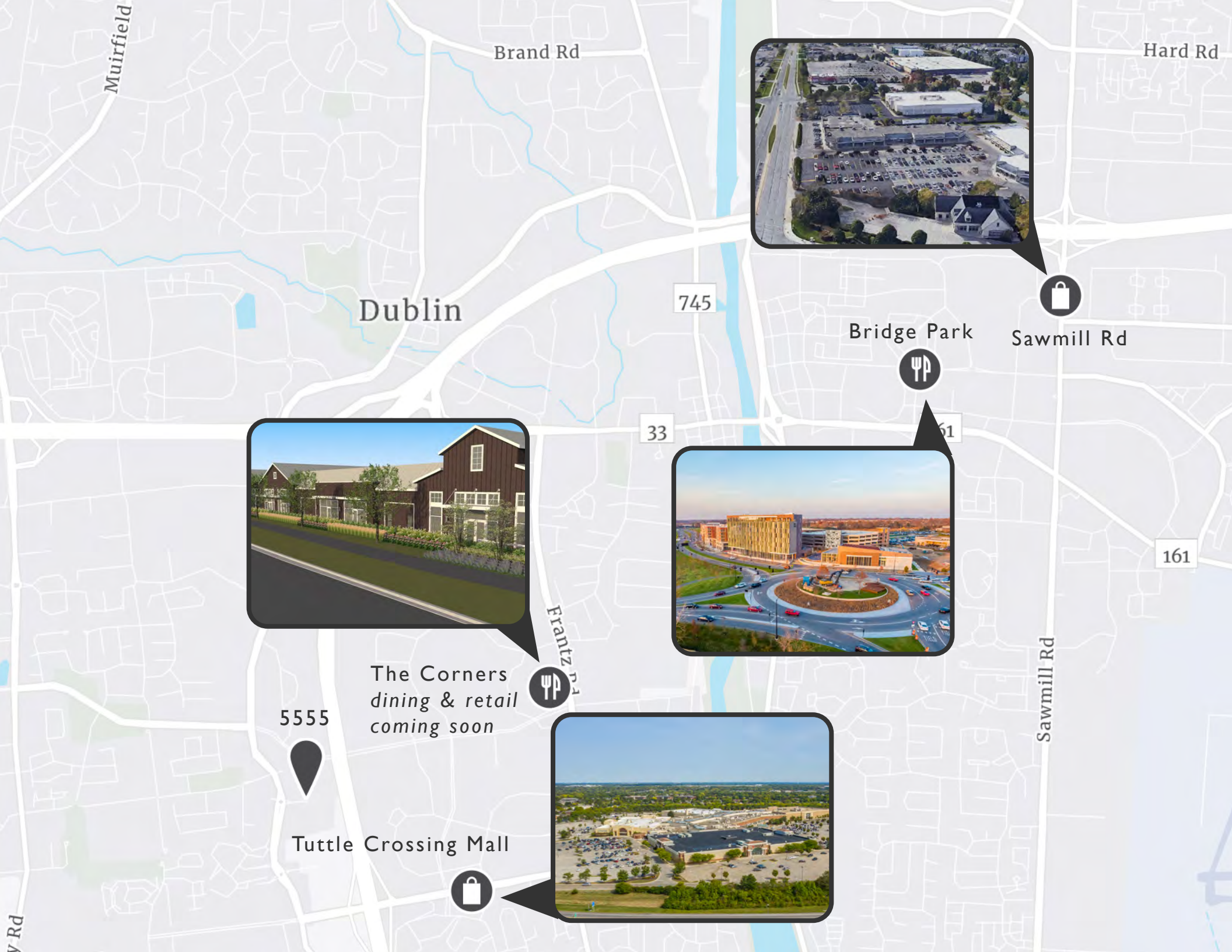


P.F. CHANG'S  
CHINA BISTRO



## Other Nearby Amenities





5555

The Corners  
*dining & retail*  
coming soon

Tuttle Crossing Mall

# Dublin Tenants stay in Dublin

In the past year, over **80 percent** of tenants that left space in Dublin leased space elsewhere in Dublin, demonstrating the city's unmatched ability to retain office tenants.

*Great Place to do Business.* With its educated workforce and prime location, Dublin has attracted a who's who of companies. Major employers in the area include: Wendy's, Cardinal Health, OCLC, Univar Solutions, XPO Logistics, Sedgewick and Fiserv.

*Growing Population.* From 2010 to 2019, the population of the Dublin sub-market grew from 41,745 residents to 48,040. The growth is projected to continue at a rate of 1.32% through 2024.

*Ultra-reliable Fiber Network.* The City of Dublin sponsored broadband connection program, DublinLink Transport, transports your company's high speed data to a local carrier at no cost.

Two tenants from outside the market recently selected Dublin for their Columbus presence:

**HAGERTY**<sup>®</sup>

**LEGACY**  
SUPPLY CHAIN SERVICES

Six major tenants recently moved to Dublin from other Columbus submarkets:

**go**<sub>2</sub>

**MARONDA**  
Homes

**OLC**

**MedFlight**

**Quantum**  
HEALTH

AC  
HOTELS  
MARRIOTT

MAY 27 - JUNE 2

The Memorial Tournament  
PRESENTED BY  
Nationwide



**For More Information Contact:**

**Grant Horton**  
614 571 1182  
[grant.horton@colliers.com](mailto:grant.horton@colliers.com)

