



## 8480 Bluebonnet Blvd, Ste. F

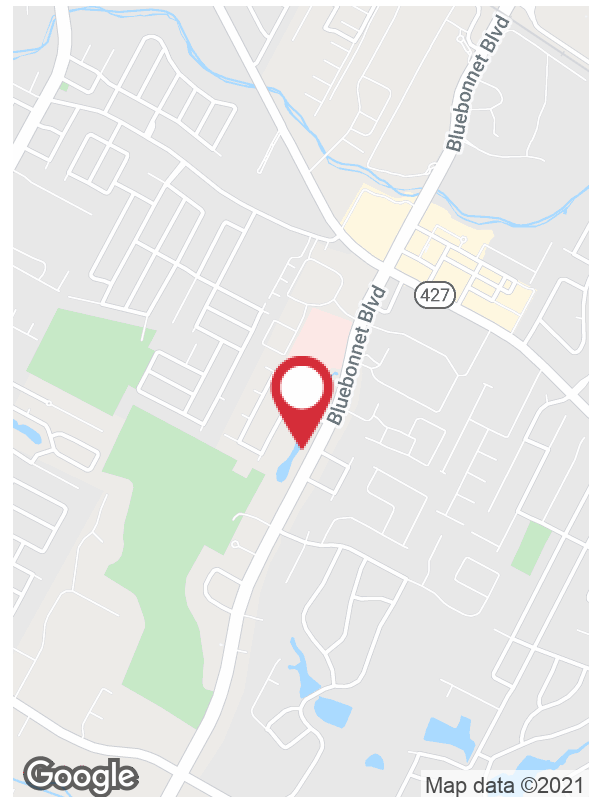
Baton Rouge, Louisiana 70810

### Property Highlights

- ±2,190 SF of office space located on Bluebonnet Blvd in between Perkins Rd and Highland Rd
- Space features a conference room, kitchen area, and 2 restrooms
- Suite F is located in the rear of the building and adjacent to a pond which can be viewed from most offices
- Ample parking and easy access to all of South Baton Rouge

### Lease Rate

\$19.00 SF/yr (MG)



For more information

**Cameron Hagle**

O: 225 295 0800 | C: 337 303 6829  
cameronhagle@latterblum.com

**CALL OR EMAIL FOR MORE INFORMATION**

NO WARRANTY OR REPRESENTATION, EXPRESS OR IMPLIED, IS MADE AS TO THE ACCURACY OF THE INFORMATION CONTAINED HEREIN, AND THE SAME IS SUBMITTED SUBJECT TO ERRORS, OMISSIONS, CHANGE OF PRICE, RENTAL OR OTHER CONDITIONS, PRIOR SALE, LEASE OR FINANCING, OR WITHDRAWAL WITHOUT NOTICE, AND OF ANY SPECIAL LISTING CONDITIONS IMPOSED BY OUR PRINCIPALS NO WARRANTIES OR REPRESENTATIONS ARE MADE AS TO THE CONDITION OF THE PROPERTY OR ANY HAZARDS CONTAINED THEREIN ARE ANY TO BE IMPLIED. LICENSED IN LOUISIANA.

1700 City Farm Drive  
Baton Rouge, LA 70806  
225 295 0800 tel  
[latterblum.com](http://latterblum.com)



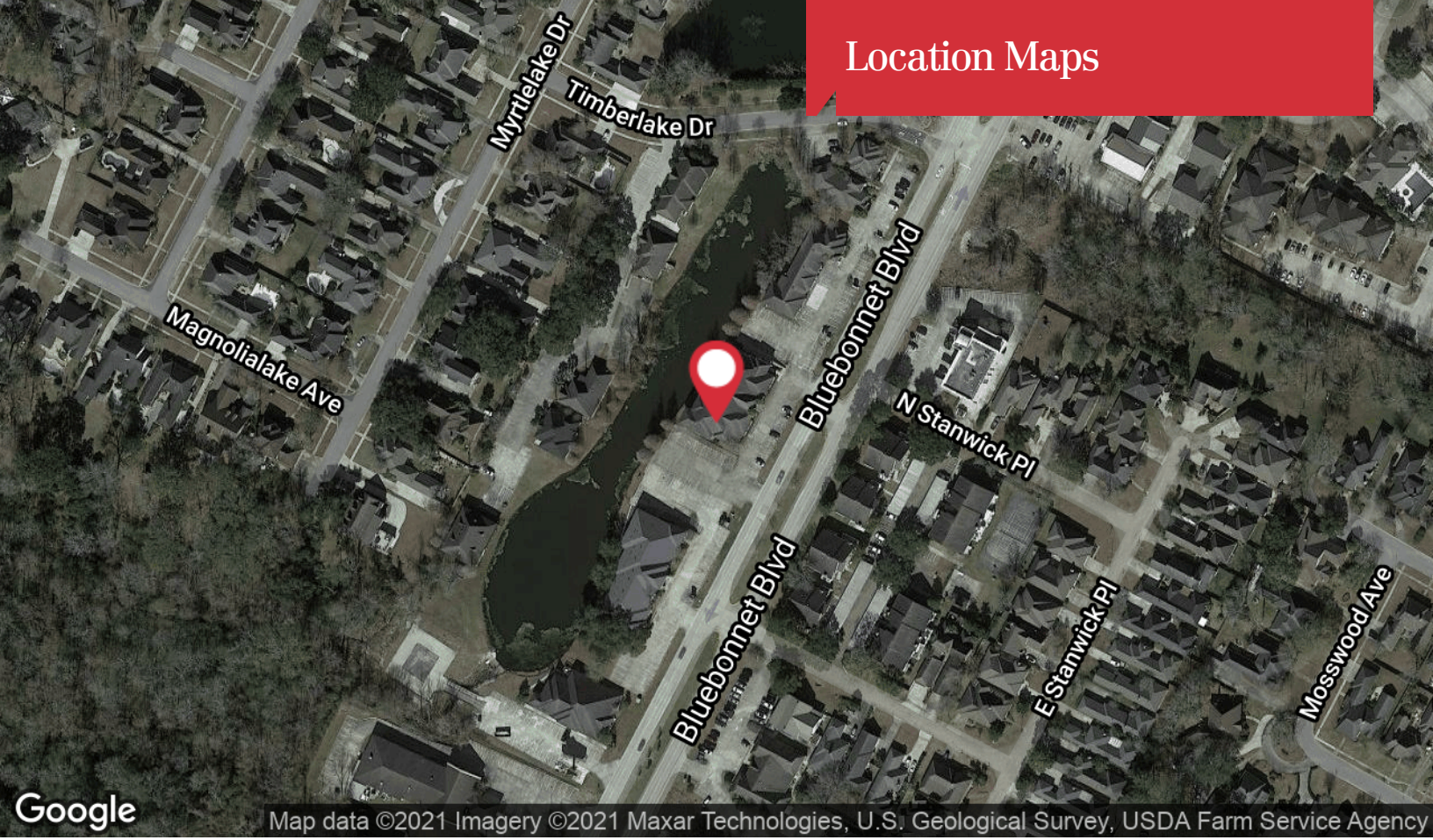
# Additional Photos



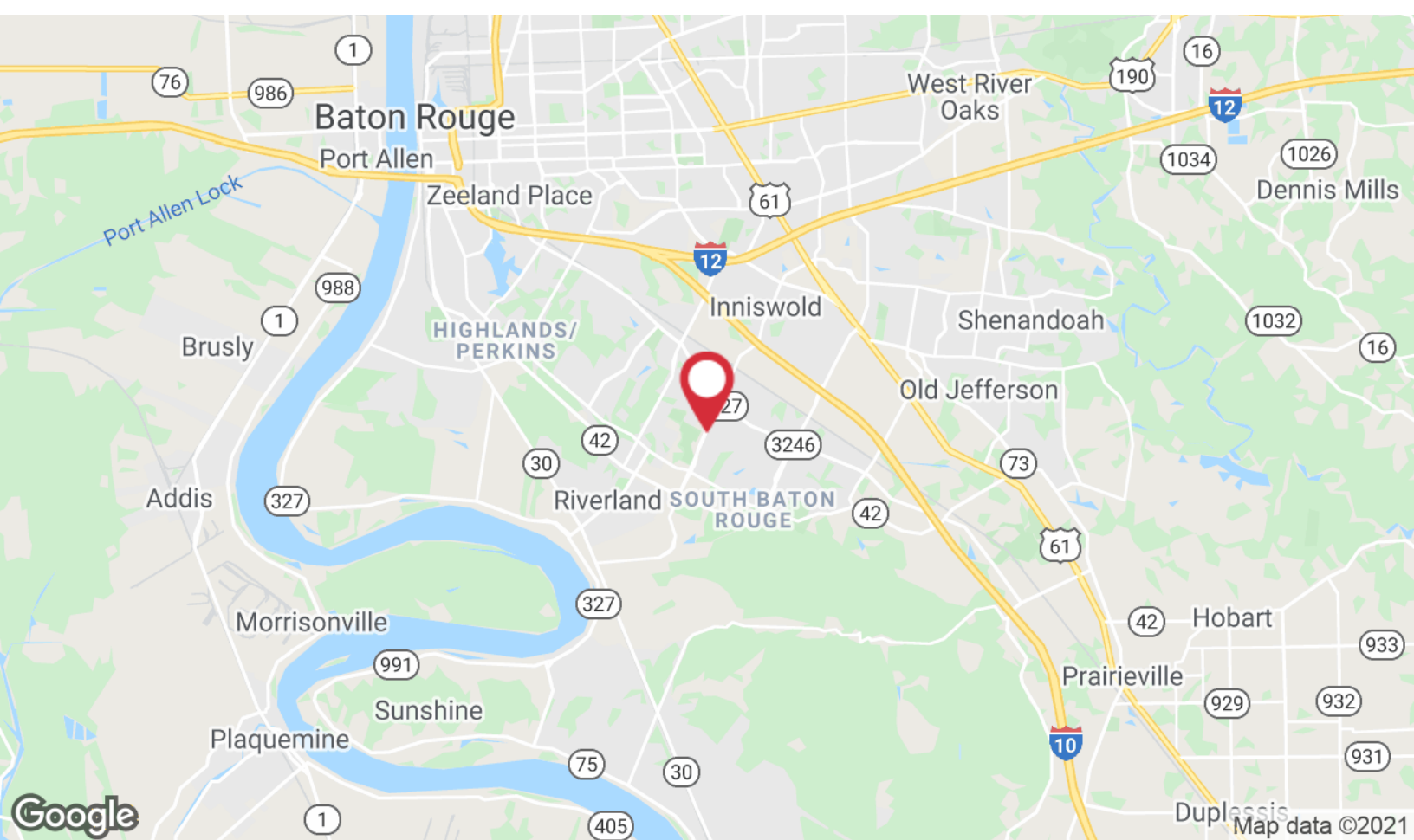




# Location Maps



Map data ©2021 Imagery ©2021 Maxar Technologies, U.S. Geological Survey, USDA Farm Service Agency



Duplassis Map data ©2021

1700 City Farm Drive  
Baton Rouge, LA 70806  
225 295 0800 tel  
[latterblum.com](http://latterblum.com)