

For Lease

Office Building

1,753 SF | \$14.00 SF/yr



8 Lafayette Place

Suite 101

Hilton Head Island, South Carolina
29926

Property Description

First floor space available for lease in class "A" building on the North-end of Hilton Head Island, South Carolina. Great visibility with signage available on monument signs on Highway 278 (William Hilton Parkway) and Lafayette Place. The space accessed off of the recently completely renovated main building lobby through double doors with half glass windows. Recently renovated suite consists of reception, six offices, conference room, server room with split HVAC system, closets, side egress/entry, break room with counter with sink for kitchenette. New carpet throughout, all interior doors have half glass windows. Common restrooms in main lobby. Great opportunity to garner great ground floor space in prominent island office building.

For more information

Walter Wilkins
843 837 4460 x3
walter@naicarolinacharter.com

OFFERING SUMMARY

Available SF	1,753 SF
Lease Rate	\$14.00 SF/yr (NNN)
Lot Size	1.18 Acres
Building Size	10,189 SF

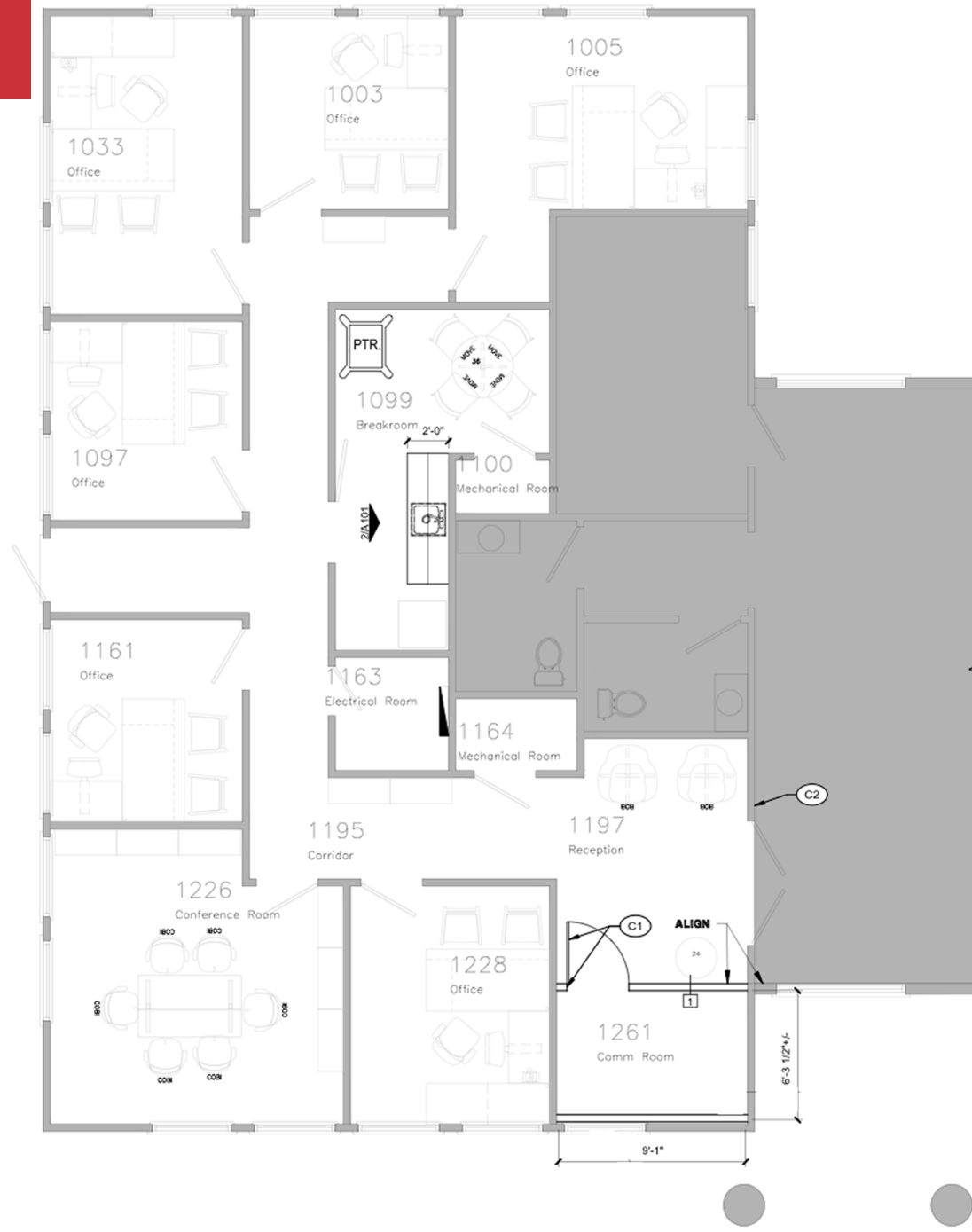
DEMOGRAPHICS

Stats	Population	Avg. HH Income
3 Miles	17,950	\$96,619
5 Miles	31,305	\$100,755
10 Miles	57,604	\$98,721

Additional Photos



Floor Plan



Location Maps



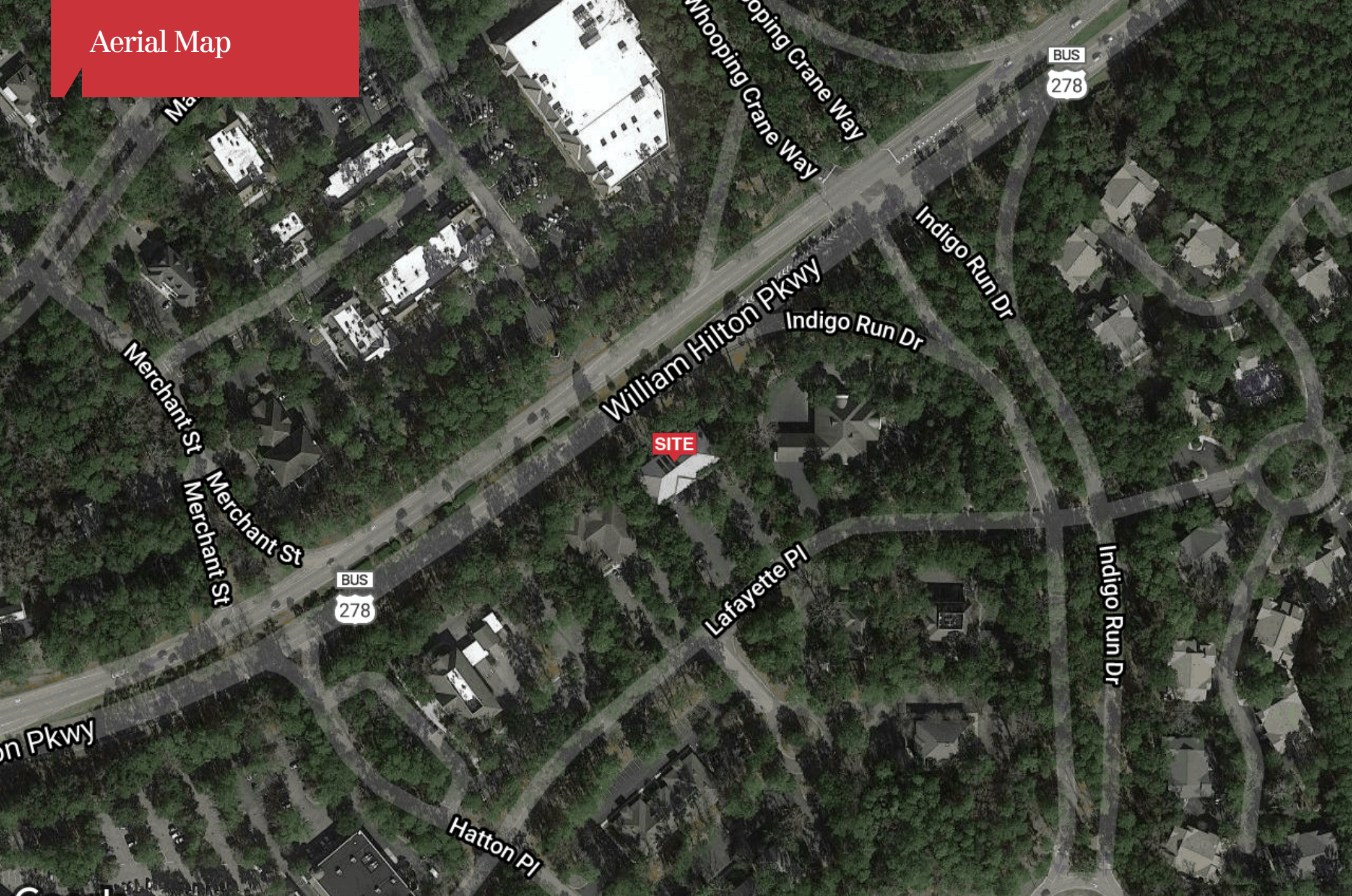
Google

Map data ©2020

Google

Map data ©2020

Aerial Map



SITE

Google

Map data ©2020 Imagery ©2020 , Maxar Technologies, U.S. Geological Survey, USDA Farm Service Agency

For Lease

Office Building

1,753 SF | \$14.00 SF/yr



Map data © 2020 Imagery © 2020 , Maxar Technologies, U.S. Geological Survey, USDA Farm Service Agency

Demographics Map



Map data ©2020

Population	3 Miles	5 Miles	10 Miles
Total Population	17,950	31,305	57,604
Median Age	48.1	49.4	46.7
Median Age (Male)	47.8	49.0	46.0
Median Age (Female)	48.4	49.7	47.1
Households & Income	3 Miles	5 Miles	10 Miles
Total Households	7,679	13,866	23,799
# of Persons Per HH	2.3	2.3	2.4
Average HH Income	\$96,619	\$100,755	\$98,721
Average House Value	\$534,276	\$556,886	\$556,409

* Demographic data derived from 2010 US Census