



vue

RESEARCH CENTER

530 FAIRVIEW AVENUE NOR H

500 Fairview Avenue N, Seattle, WA 98109



Introducing **VUE** Research Center

Vue Research Center is a new, modern life science campus in South Lake Union. It features open, collaborative spaces and expansive walls of glass for lake views and plenty of natural sunlight. Completed in December 2015, this institutional grade research center offers best in class tenant solutions for the life science industry.

Spaciousness. Productivity. Convenience.
It's all in **VUE**.



Project Highlights



Views of Lake Union, the Space Needle, and downtown Seattle



100-person conference center



On-site parking



Single floor plates to accommodate both small and larger tenants



Modern fitness center

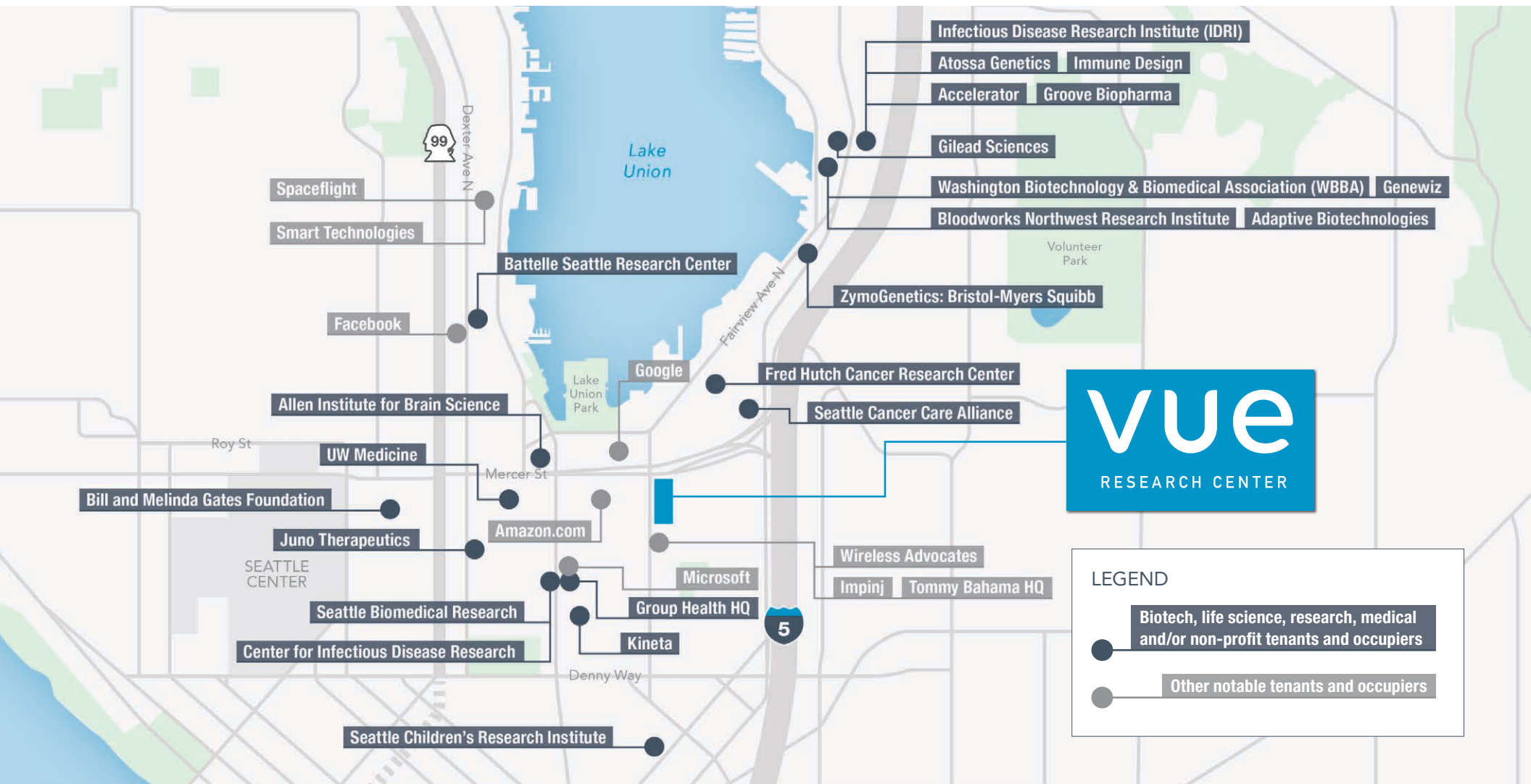


On-site café



Ideally located in the center of South Lake Union, an amenity-rich, life science hub

vue Research Center is located in the growing hub of Seattle's life science community.



Location Highlights



Walkscore® of 95, per Walkscore.com; walking distance to parks, restaurants, shopping, and more



Endless options for breakfast, lunch, happy hour and dinner with 200+ restaurants, bars and cafés within a mile



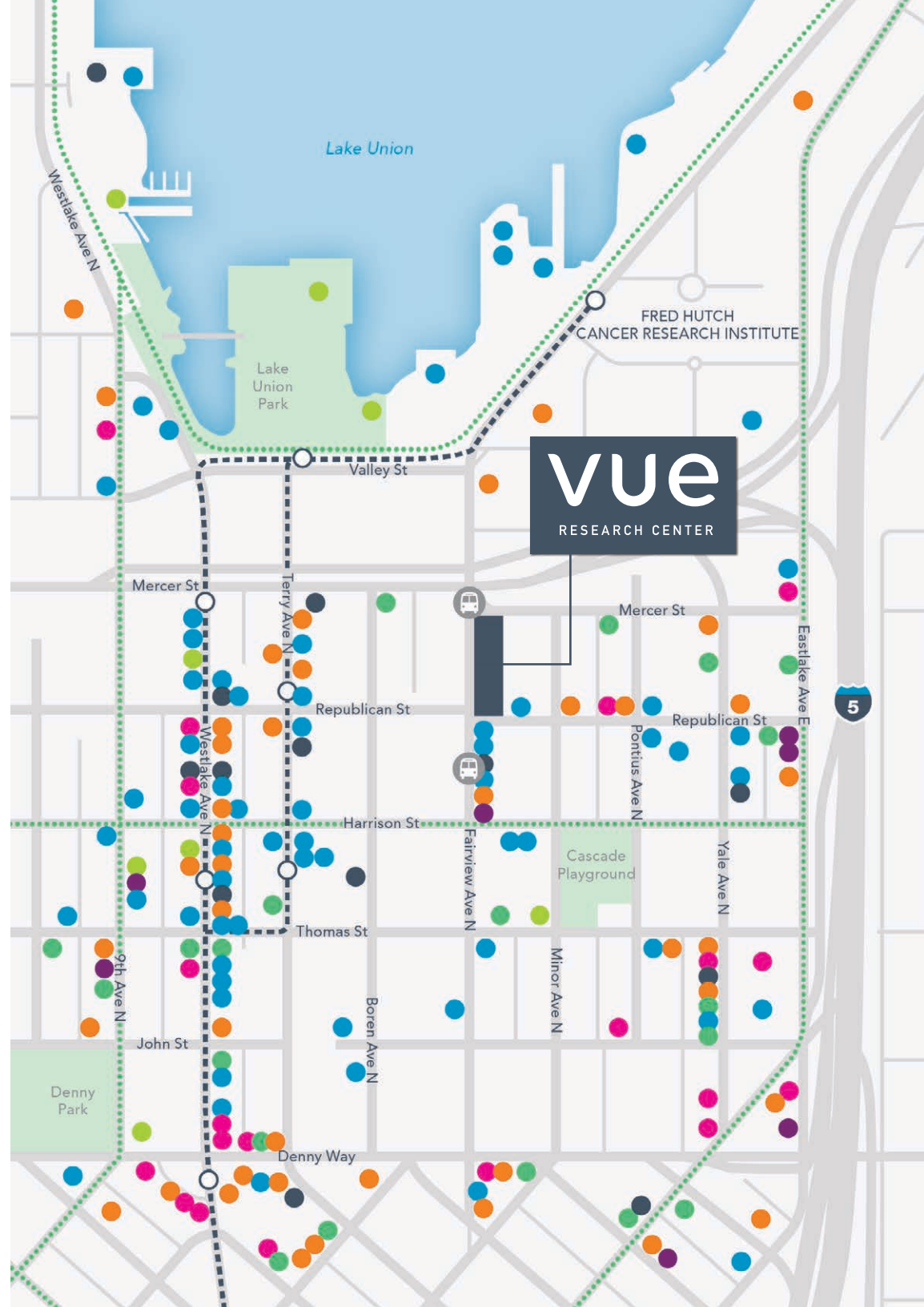
Excellent transit access: two blocks to South Lake Union Streetcar, less than one block to the nearest bus stop, and 10+ bus lines within .25 miles



Great for bike commuters; easy access via known bike routes plus on-site showers, lockers and bike storage

MAP LEGEND

- | | |
|-----------------------------|-----------------|
| Restaurant/Café | Nearby Bus Stop |
| Coffee/Smoothie/Sweets | SLU Streetcar |
| Nightclub/Bar | Bike Path/Route |
| Retail | |
| Grocery/Services/Supplies | |
| Fitness, Health & Wellness | |
| Cultural/Activities/Tourism | |



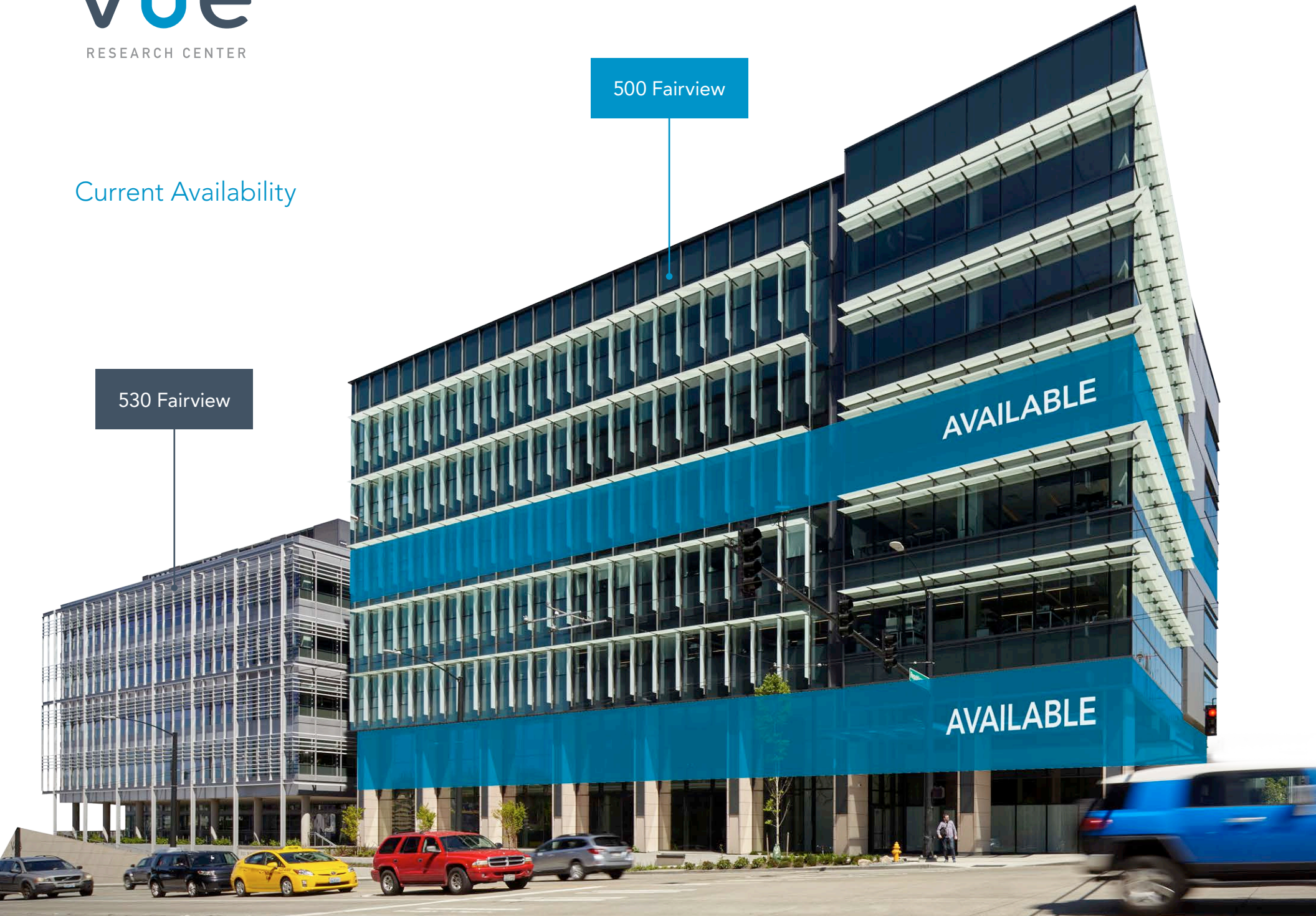
Current Availability

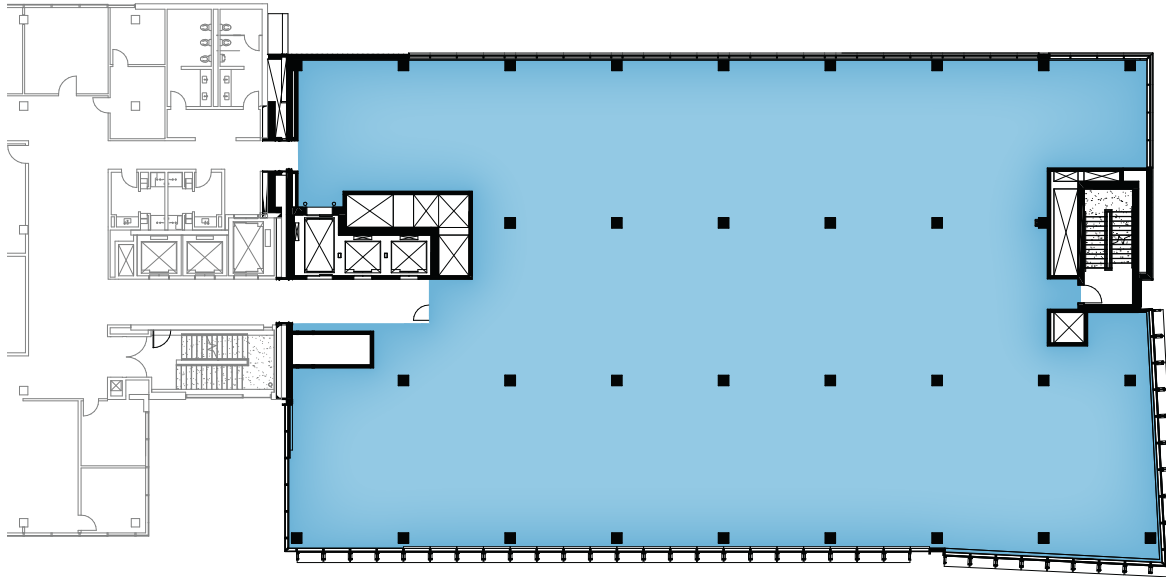
500 Fairview

530 Fairview

AVAILABLE

AVAILABLE

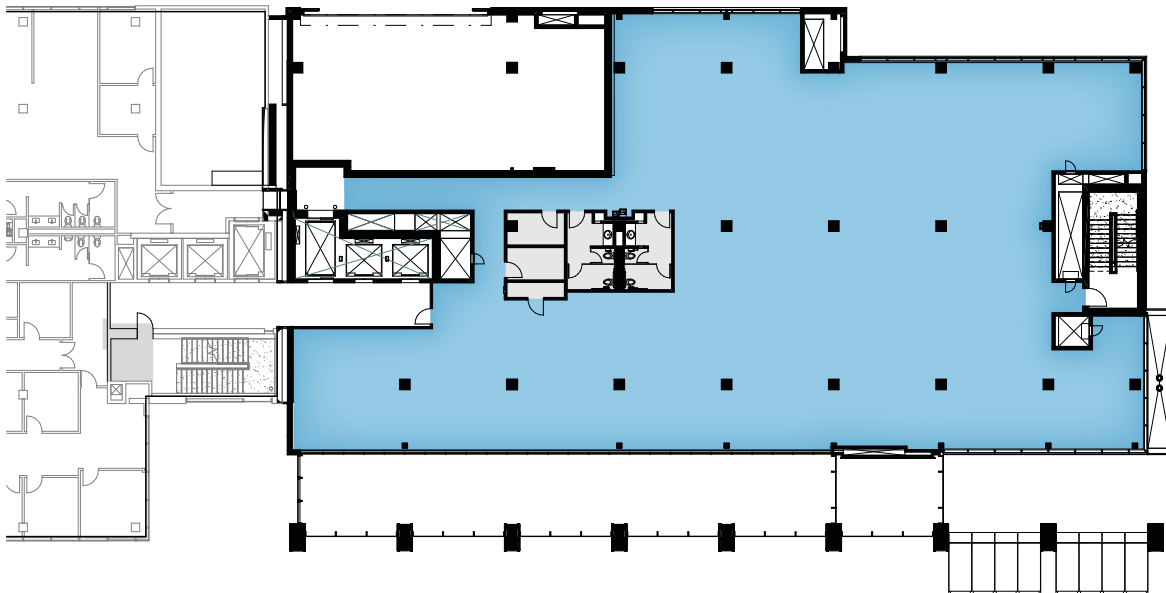




500 Fairview

FIFTH FLOOR

19,841 RSF



500 Fairview

SECOND FLOOR

13,965 RSF

vue

RESEARCH CENTER



500 FAIRVIEW AVENUE N
SEATTLE, WA 98109

BioMed Realty 
Discover here

For leasing information:

PAUL CARR
Senior Vice President
+1 206 292 6005
paul.carr@cbre.com

STEVEN PEROVICH
Senior Vice President
+1 206 292 6059
steven.perovich@cbre.com

MARCUS YAMAMOTO
Vice President
+1 206 292 6062
marcus.yamamoto@cbre.com

CBRE, Inc.
1420 5th Avenue
Suite 1700
Seattle, WA 98101

CBRE

© 2017 CBRE, Inc. All rights reserved. This information has been obtained from sources believed reliable, but has not been verified for accuracy or completeness. You should conduct a careful, independent investigation of the property and verify all information. Any reliance on this information is solely at your own risk. CBRE and the CBRE logo are service marks of CBRE, Inc. All other marks displayed on this document are the property of their respective owners. Photos herein are the property of their respective owners and use of these images without the express written consent of the owner is prohibited. ejs071817