

FOR LEASE

3505

EMBASSY PARKWAY

Akron, Ohio 44333



PROPERTY DETAILS

- + Located in the prestigious Embassy Parkway Corporate Park
- + Attractive 2-story office building of 14,136 Sq. Ft.
- + Monument signage available
- + Ample parking 5 spaces per 1,000 Sq. Ft.
- + Easy access to amenities and highways
- + First floor suites can be combined for 6,289 Sq. Ft.
- + Suite 100 – 3,475 Sq. Ft.
- + Suite 101 – 2,814 Sq. Ft.
- + \$16.50 per Sq. Ft. plus utilities
- + Tenant is responsible for in-suite cleaning



CONTACT US

SUSAN LINES

Vice President
+1 330 670 4411
susan.lines@cbre.com
[Professional Bio](#)

ZADA BRENNER

Senior Associate
+1 330 670 4418
zada.brenner@cbre.com
[Professional Bio](#)

CBRE INC.

3421 Ridgewood Rd.,
Suite 150
Akron, OH 44333
www.cbre.us

www.cbre.us/akron-canton

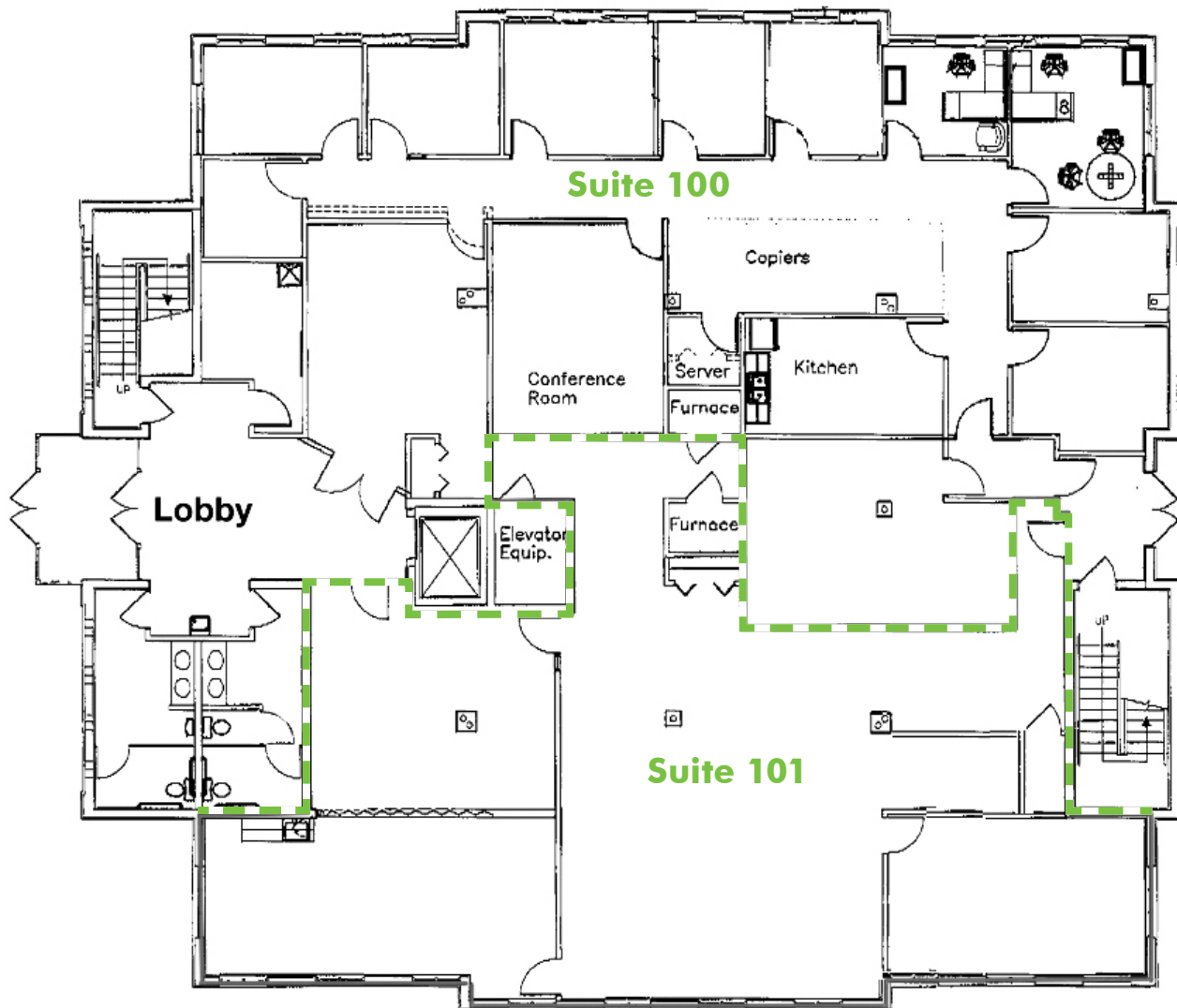
CBRE

FOR LEASE

3505
EMBASSY PARKWAY
Akron, Ohio 44333



FLOOR PLAN



© 2019 CBRE, Inc. The information contained in this document has been obtained from sources believed reliable. While CBRE, Inc. does not doubt its accuracy, CBRE, Inc. has not verified it and makes no guarantee, warranty or representation about it. It is your responsibility to independently confirm its accuracy and completeness. Any projections, opinions, assumptions or estimates used are for example only and do not represent the current or future performance of the property. The value of this transaction to you depends on tax and other factors which should be evaluated by your tax, financial and legal advisors. You and your advisors should conduct a careful, independent investigation of the property to determine to your satisfaction the suitability of the property for your needs. Photos herein are the property of their respective owners and use of these images without the express written consent of the owner is prohibited. CBRE and the CBRE logo are service marks of CBRE, Inc. and/or its affiliated or related companies in the United States and other countries. All other marks displayed on this document are the property of their respective owners. Licensed Real Estate Broker.