

FOR LEASE

OFFICE IN GHENT

200 W. 21st Street, Norfolk, VA

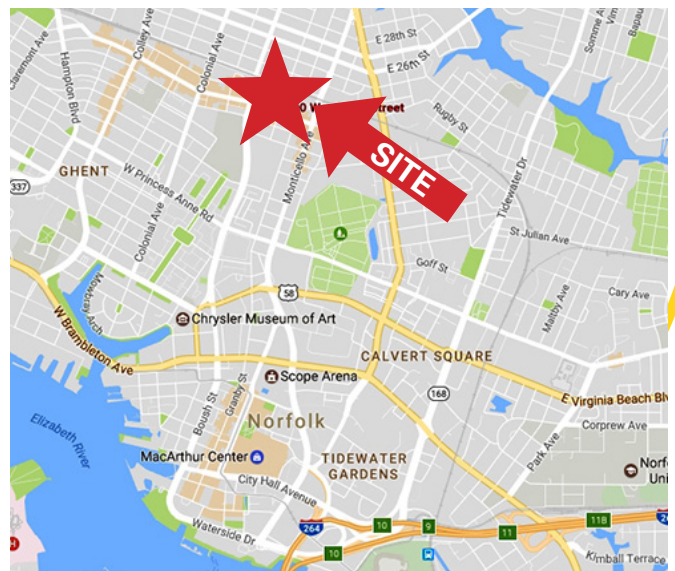


OFFICE

- 2,300 SF available for lease
- Join tenants S. Ray Barrett and La Boheme
- Parking available on the side of the building and on the street
- Zoned C-C
- \$2,300/month, full service net janitorial

Demographics (2019)

	1 Mile	3 Miles	5 Miles
Population	23,138	113,267	257,427
Households	9,971	43,313	98,379
Ave. HH Inc.	\$70,328	\$75,793	\$68,104



CONTACT:

LINDSAY HIMELRIGHT, CCIM
(757) 640-9462
lindsayhimelright@harveylindsay.com

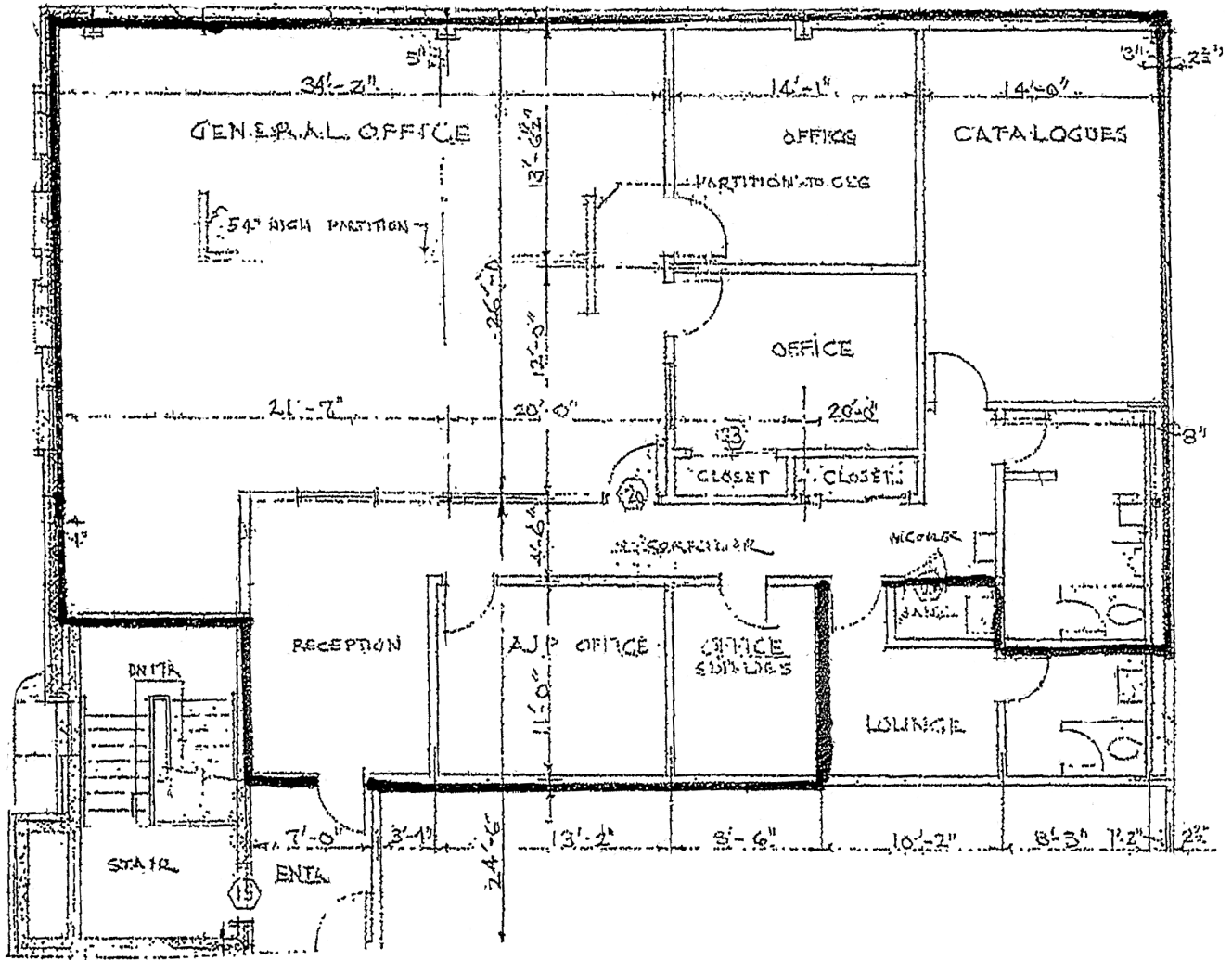
HARVEY LINDSAY
 COMMERCIAL REAL ESTATE

A Tradition of Forward Thinking

FOR LEASE

OFFICE IN GHENT

200 W. 21st Street, Norfolk, VA



CONTACT:

LINDSAY HIMELRIGHT, CCIM

(757) 640-9462

lindsayhimmelright@harveylindsay.com

HARVEY LINDSAY

COMMERCIAL REAL ESTATE

A Tradition of Forward Thinking

The information contained herein has been obtained from sources believed to be reliable but is not warranted.
We cannot be responsible for errors, omissions, withdrawal, or prior lease or sale.

OFFICE FOR LEASE IN GHENT - 200 W. 21st Street, Norfolk, VA



CONTACT:

LINDSAY HIMELRIGHT, CCIM

(757) 640-9462

lindsayhimelright@harveylindsay.com

HARVEY LINDSAY

COMMERCIAL REAL ESTATE

A Tradition of Forward Thinking

The information contained herein has been obtained from sources believed to be reliable but is not warranted.

We cannot be responsible for errors, omissions, withdrawal, or prior lease or sale.