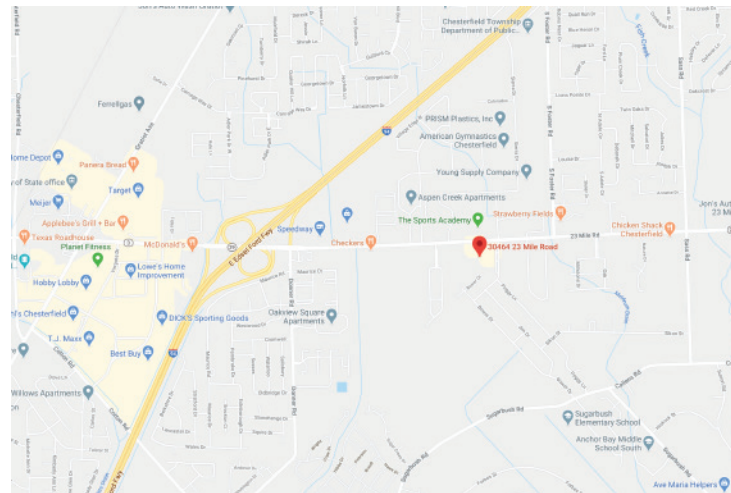




PROFESSIONAL OFFICE 30464 23 MILE, CHESTERFIELD



Property Type:	General Office/Medical
Total Sqare Footage:	11,200
Minimum Sq. Ft. Available:	1,700
Maximum Sq. Ft. Available:	1,700
Lease Rate:	\$12.00
Lot Size:	1.87 Acres
Year Built:	1977
Zoning:	C-1
Parking Spaces:	75+
Cross Streets:	Southside of 23 Mile East of I94



PROPERTY OVERVIEW

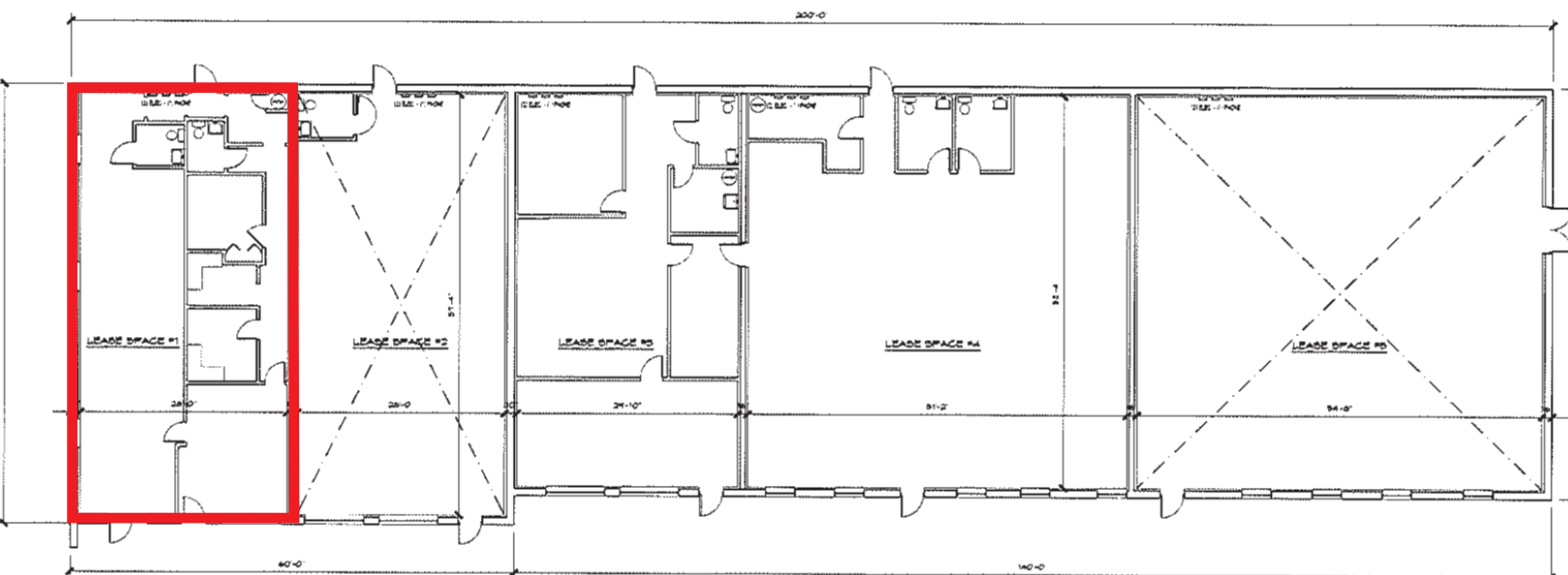
May be built out offering up to 11,200 square feet of contiguous space. Ample parking. Minutes to I-94. Campus setting with modern windowed offices, kitchenette and private bathroom.

PROPERTY CONTACTS:

KEN MINNE | O: 586.254.0900 | C: 586.291.5525 | ken@pilotpg.com

44400 VAN DYKE, SUITE 101 | STERLING HEIGHTS, MI | 48314

FLOOR PLAN



→ AS-BUILT FLOOR PLAN
SCALE 1/8" = 1'-0"



ADDITIONAL PICTURES



PILOT
PROPERTY GROUP

ADDITIONAL PICTURES



PILOT
PROPERTY GROUP

ADDITIONAL PICTURES



PILOT
PROPERTY GROUP