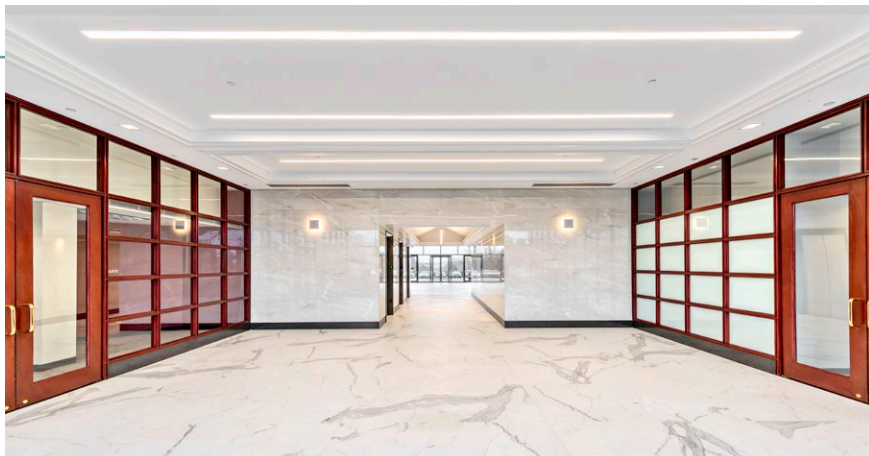


ANNOUNCING THE NEW WESTWOOD!

THE WESTWOOD

2441/2443 Warrenville Road | Lisle IL 60532

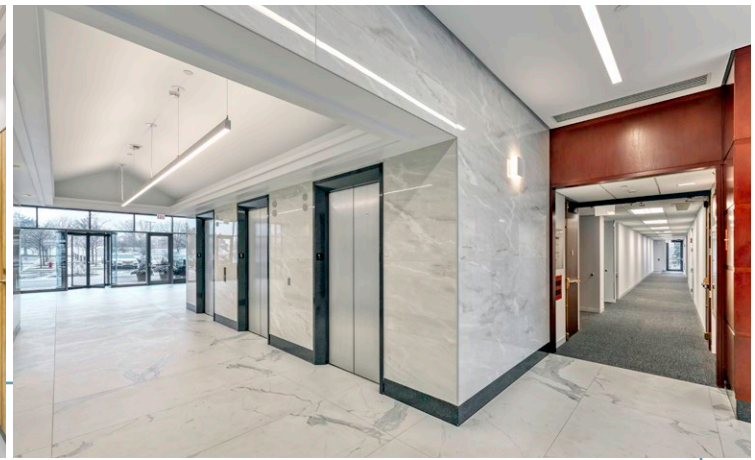
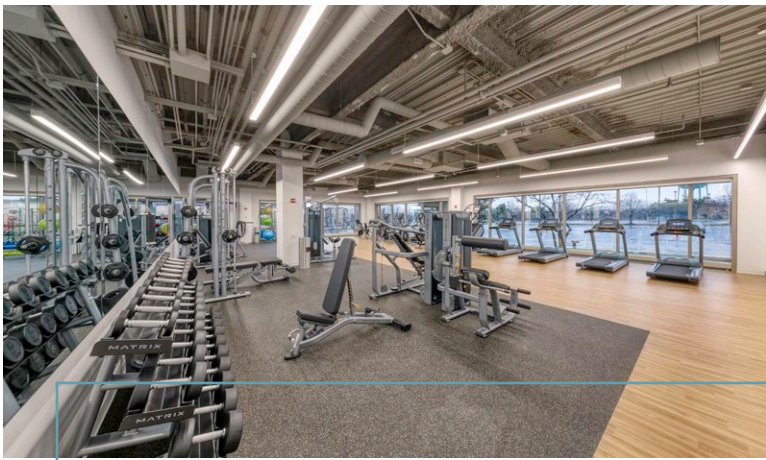
CBRE



**FULLY RENOVATED
WITH TOP OF
CLASS AMENITIES**

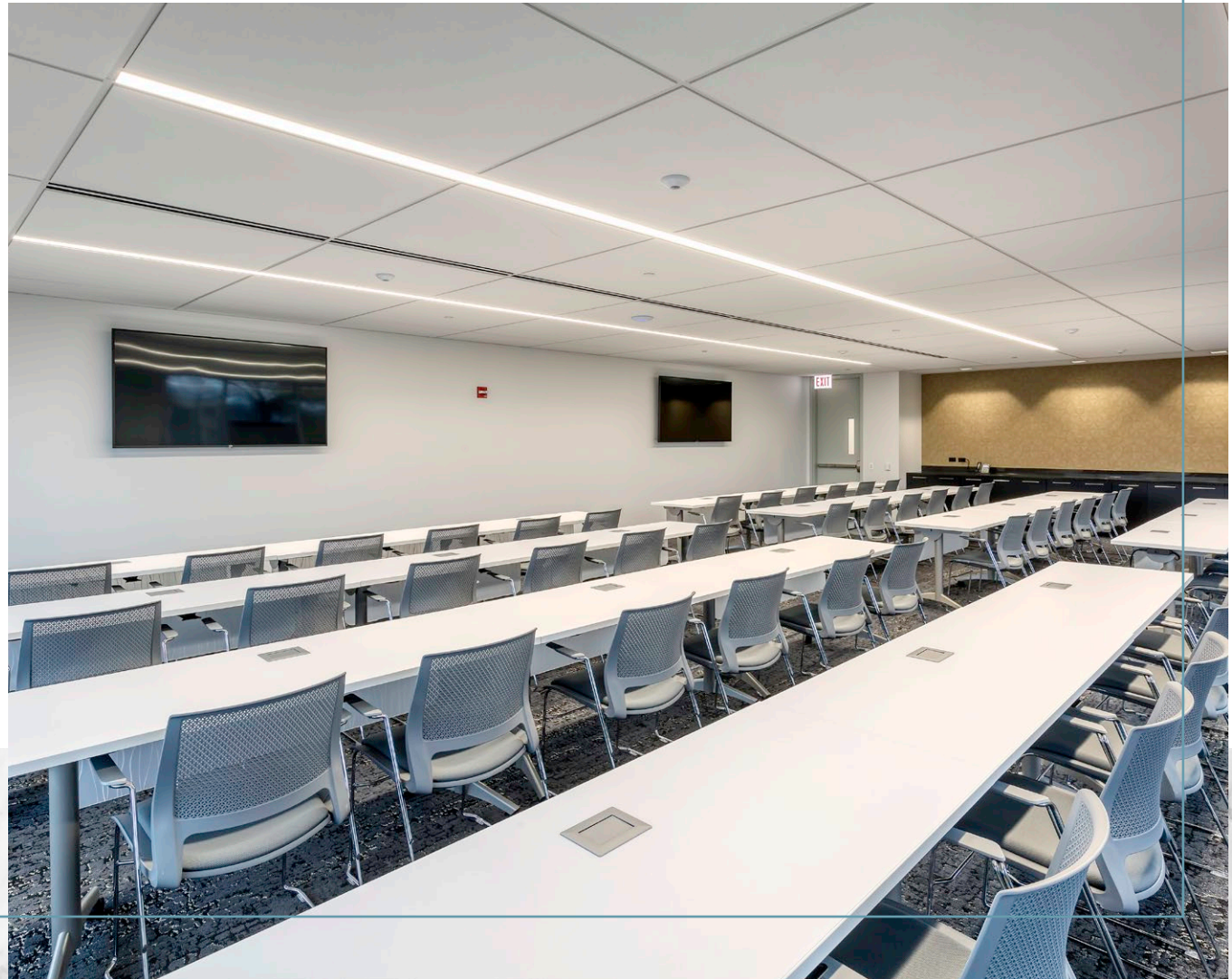
2,000-140,000 SF contiguous

I-88 Signage Available



PROPERTY HIGHLIGHTS

- New Lobbies
- Outstanding Fitness Facility
- Multiple tenant lounges
- New Building Deli
- First class conferencing
- Secured heated parking
- Onsite mgmt. and security
- Tollway Signage



AMENITIES @ THE WESTWOOD

2441 WARRENVILLE ROAD:

UPTOWN LOUNGE

New Café that offers modern/contemporary seating to enjoy breakfast /lunch or a lounge to simply collaborate w coworkers

CONFERENCE CENTER

Newly constructed conference facility with state of the art technology

2443 WARRENVILLE ROAD:

DOWNTOWN LOUNGE

Enjoy fireside seating to relax or meet with others

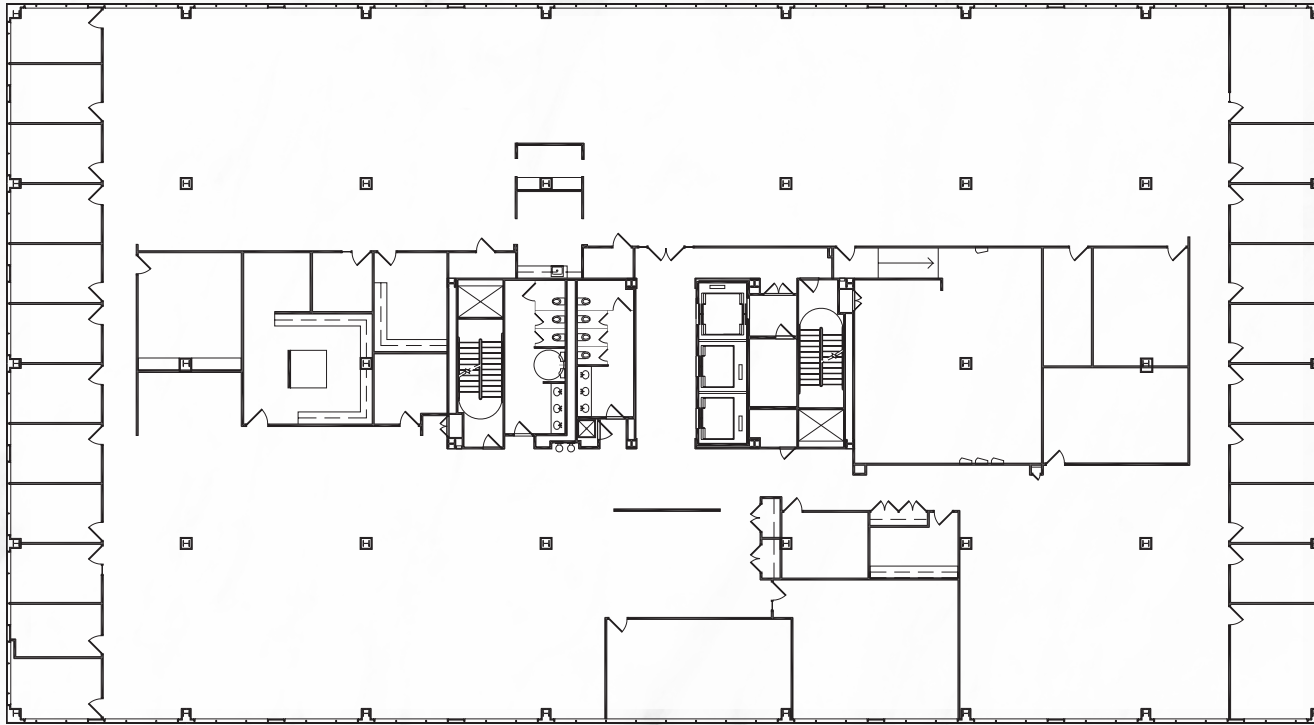
FITNESS CENTER

Top of class fitness facility with high end equipment and locker rooms

COFFEE KIOSK

Coffee Kiosk in new lobby for convenient grab and go



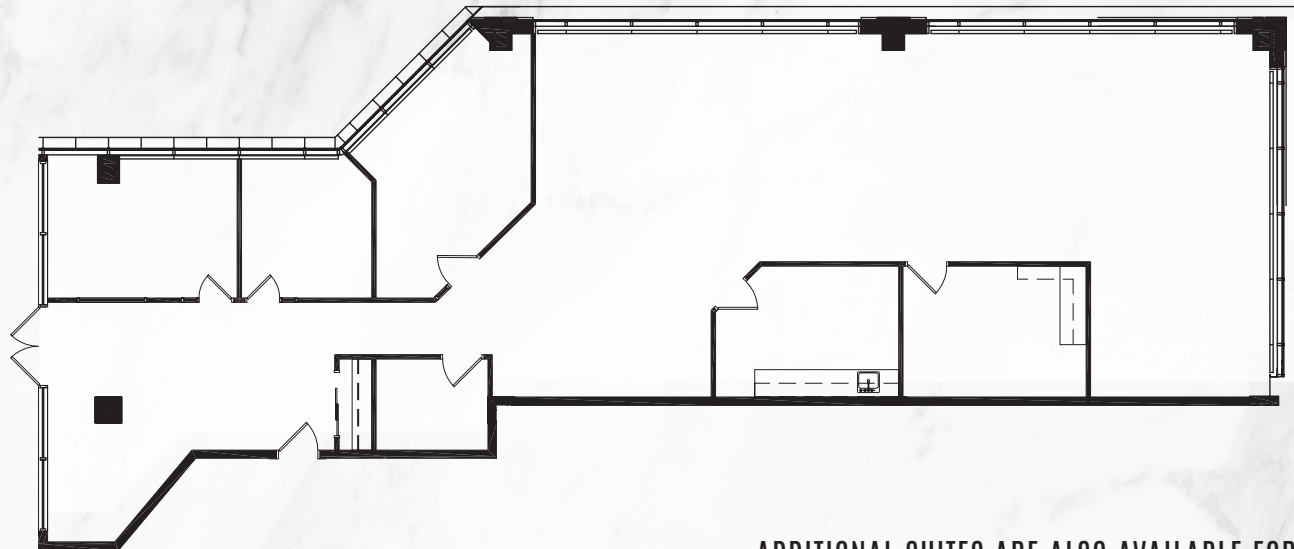


2441 Warrenville Road

SUITE 400
28,802 RSF

2443 Warrenville Road

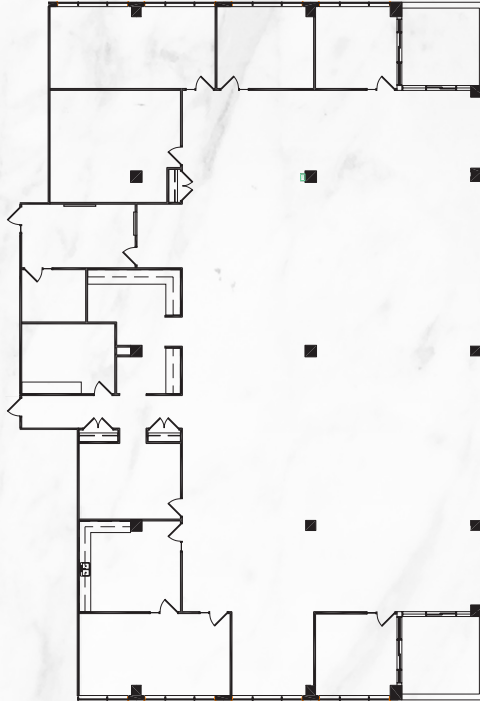
SUITE 150
3,138 RSF



ADDITIONAL SUITES ARE ALSO AVAILABLE FOR LEASE

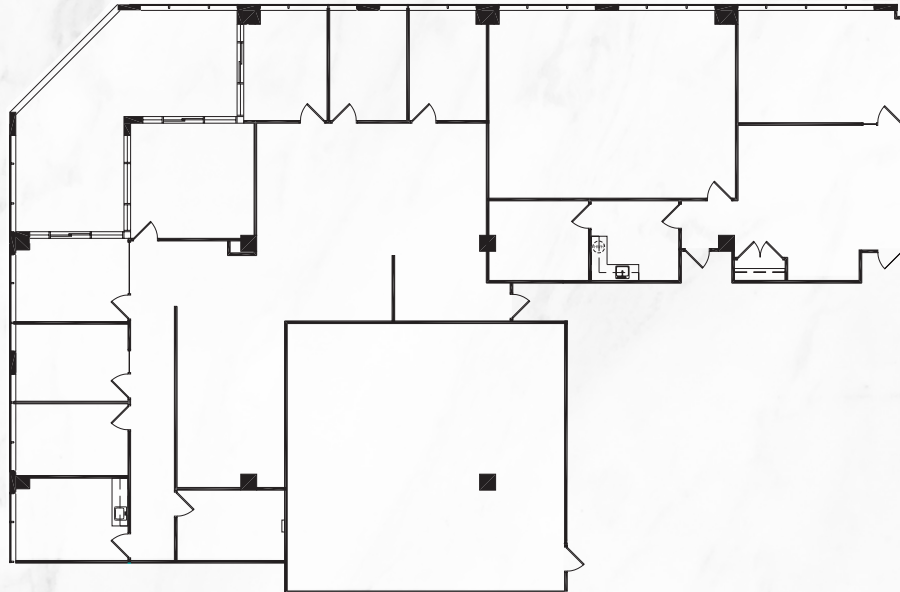
2443 Warrenville Road

SUITE 500
10,374 RSF

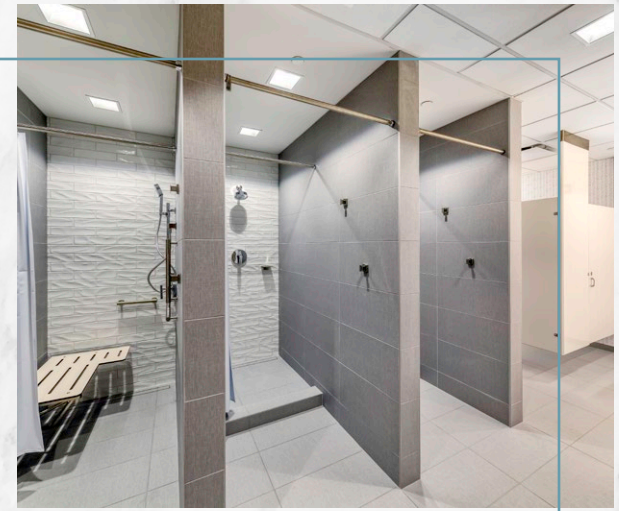


2443 Warrenville Road

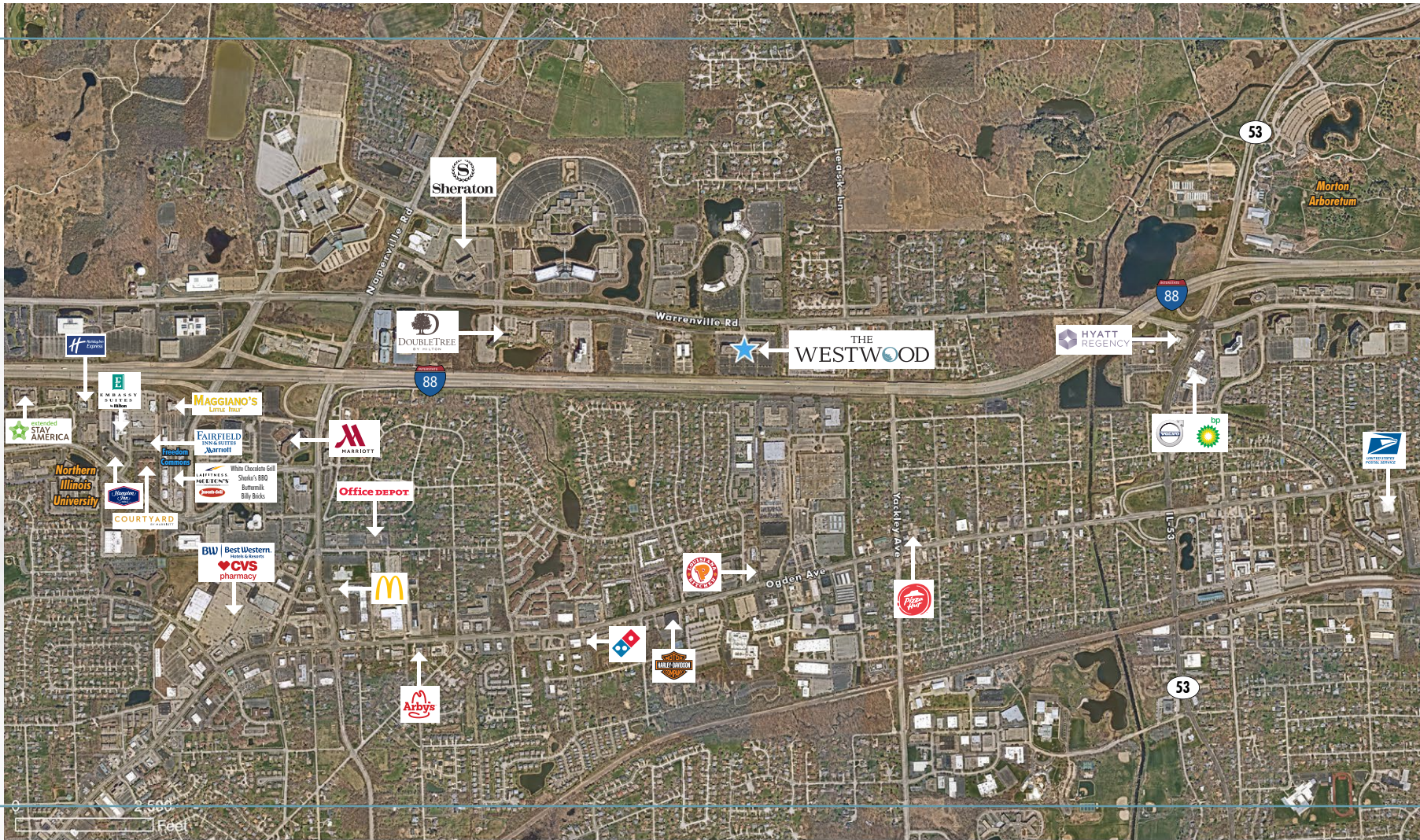
SUITE 600-615
7,290 RSF



**ADDITIONAL SUITES ARE ALSO
AVAILABLE FOR LEASE**



AREA MAP



FOR MORE INFORMATION

PETE ADAMO
 +1 630 573 7053
 peter.adamo@cbre.com

BILL ELWOOD
 +1 630 573 7033
 william.elwood@cbre.com

