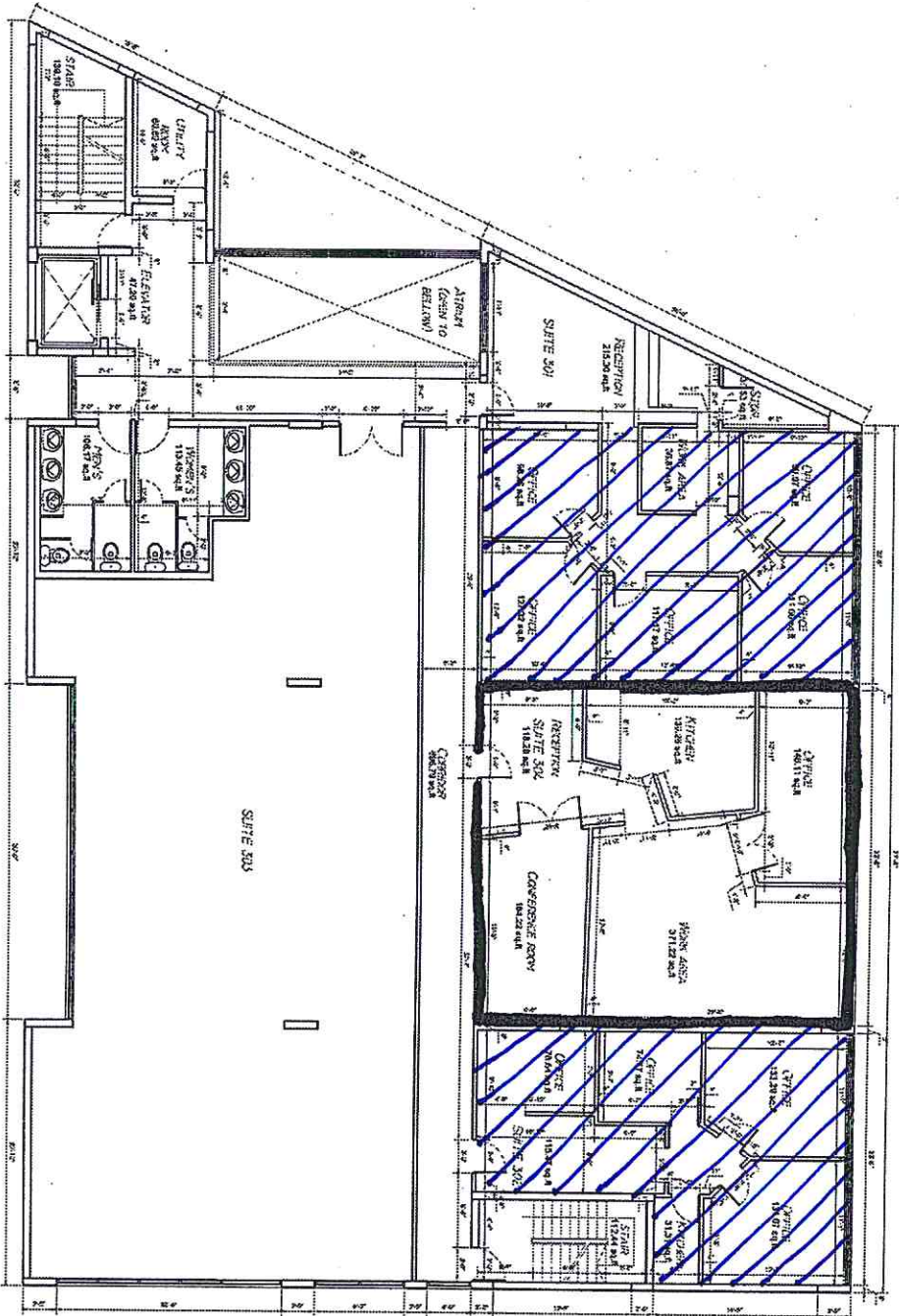


Atrium Courts 11077 Biscayne Blvd Suite 304



TOTAL SQ. FT.	
Total Area	6,229.79 sq. ft.
Total Office Area	4,020.75 sq. ft.
Total Corridor Area	5,008.31 sq. ft.
Total	14,860.71 sq. ft.

THIRD FLOOR PLAN
SCALE: 1/8" = 1'-0"



DESIGN & DEVELOPMENT
CONSULTANT
995 SW 13th Ave.
Miami, FL 33135
PH: 784.031.2474

PROJECT

ATRIUM COURT
OFFICE BUILDING

ADDRESSES

11077 BISCAYNE BLVD,
MIAMI GARDENS, FL 33141

OWNER INFO

ALAN F. WARDENSTEIN
LEVAIA HOLDING

CONSULTANTS

DATE: 08/08/2012
DRAWING: 08/08/2012
REVISIONS:
BY: [blank]
DATE: [blank]
GROUP: [blank]

CONSULTANTS

REVISIONS

NO.	DESCRIPTION	DATE
1	ISSUED FOR PERMIT	08/08/2012
2	ISSUED FOR PERMIT	08/08/2012
3	ISSUED FOR PERMIT	08/08/2012
4	ISSUED FOR PERMIT	08/08/2012
5	ISSUED FOR PERMIT	08/08/2012
6	ISSUED FOR PERMIT	08/08/2012
7	ISSUED FOR PERMIT	08/08/2012
8	ISSUED FOR PERMIT	08/08/2012
9	ISSUED FOR PERMIT	08/08/2012
10	ISSUED FOR PERMIT	08/08/2012
11	ISSUED FOR PERMIT	08/08/2012
12	ISSUED FOR PERMIT	08/08/2012
13	ISSUED FOR PERMIT	08/08/2012
14	ISSUED FOR PERMIT	08/08/2012
15	ISSUED FOR PERMIT	08/08/2012
16	ISSUED FOR PERMIT	08/08/2012
17	ISSUED FOR PERMIT	08/08/2012
18	ISSUED FOR PERMIT	08/08/2012
19	ISSUED FOR PERMIT	08/08/2012
20	ISSUED FOR PERMIT	08/08/2012
21	ISSUED FOR PERMIT	08/08/2012
22	ISSUED FOR PERMIT	08/08/2012
23	ISSUED FOR PERMIT	08/08/2012
24	ISSUED FOR PERMIT	08/08/2012
25	ISSUED FOR PERMIT	08/08/2012
26	ISSUED FOR PERMIT	08/08/2012
27	ISSUED FOR PERMIT	08/08/2012
28	ISSUED FOR PERMIT	08/08/2012
29	ISSUED FOR PERMIT	08/08/2012
30	ISSUED FOR PERMIT	08/08/2012
31	ISSUED FOR PERMIT	08/08/2012
32	ISSUED FOR PERMIT	08/08/2012
33	ISSUED FOR PERMIT	08/08/2012
34	ISSUED FOR PERMIT	08/08/2012
35	ISSUED FOR PERMIT	08/08/2012
36	ISSUED FOR PERMIT	08/08/2012
37	ISSUED FOR PERMIT	08/08/2012
38	ISSUED FOR PERMIT	08/08/2012
39	ISSUED FOR PERMIT	08/08/2012
40	ISSUED FOR PERMIT	08/08/2012
41	ISSUED FOR PERMIT	08/08/2012
42	ISSUED FOR PERMIT	08/08/2012
43	ISSUED FOR PERMIT	08/08/2012
44	ISSUED FOR PERMIT	08/08/2012
45	ISSUED FOR PERMIT	08/08/2012
46	ISSUED FOR PERMIT	08/08/2012
47	ISSUED FOR PERMIT	08/08/2012
48	ISSUED FOR PERMIT	08/08/2012
49	ISSUED FOR PERMIT	08/08/2012
50	ISSUED FOR PERMIT	08/08/2012
51	ISSUED FOR PERMIT	08/08/2012
52	ISSUED FOR PERMIT	08/08/2012
53	ISSUED FOR PERMIT	08/08/2012
54	ISSUED FOR PERMIT	08/08/2012
55	ISSUED FOR PERMIT	08/08/2012
56	ISSUED FOR PERMIT	08/08/2012
57	ISSUED FOR PERMIT	08/08/2012
58	ISSUED FOR PERMIT	08/08/2012
59	ISSUED FOR PERMIT	08/08/2012
60	ISSUED FOR PERMIT	08/08/2012
61	ISSUED FOR PERMIT	08/08/2012
62	ISSUED FOR PERMIT	08/08/2012
63	ISSUED FOR PERMIT	08/08/2012
64	ISSUED FOR PERMIT	08/08/2012
65	ISSUED FOR PERMIT	08/08/2012
66	ISSUED FOR PERMIT	08/08/2012
67	ISSUED FOR PERMIT	08/08/2012
68	ISSUED FOR PERMIT	08/08/2012
69	ISSUED FOR PERMIT	08/08/2012
70	ISSUED FOR PERMIT	08/08/2012
71	ISSUED FOR PERMIT	08/08/2012
72	ISSUED FOR PERMIT	08/08/2012
73	ISSUED FOR PERMIT	08/08/2012
74	ISSUED FOR PERMIT	08/08/2012
75	ISSUED FOR PERMIT	08/08/2012
76	ISSUED FOR PERMIT	08/08/2012
77	ISSUED FOR PERMIT	08/08/2012
78	ISSUED FOR PERMIT	08/08/2012
79	ISSUED FOR PERMIT	08/08/2012
80	ISSUED FOR PERMIT	08/08/2012
81	ISSUED FOR PERMIT	08/08/2012
82	ISSUED FOR PERMIT	08/08/2012
83	ISSUED FOR PERMIT	08/08/2012
84	ISSUED FOR PERMIT	08/08/2012
85	ISSUED FOR PERMIT	08/08/2012
86	ISSUED FOR PERMIT	08/08/2012
87	ISSUED FOR PERMIT	08/08/2012
88	ISSUED FOR PERMIT	08/08/2012
89	ISSUED FOR PERMIT	08/08/2012
90	ISSUED FOR PERMIT	08/08/2012
91	ISSUED FOR PERMIT	08/08/2012
92	ISSUED FOR PERMIT	08/08/2012
93	ISSUED FOR PERMIT	08/08/2012
94	ISSUED FOR PERMIT	08/08/2012
95	ISSUED FOR PERMIT	08/08/2012
96	ISSUED FOR PERMIT	08/08/2012
97	ISSUED FOR PERMIT	08/08/2012
98	ISSUED FOR PERMIT	08/08/2012
99	ISSUED FOR PERMIT	08/08/2012
100	ISSUED FOR PERMIT	08/08/2012

**ATRIUM COURT
OFFICE**
3RD
FLOOR PLAN
REVISED
A2.03