



OBERER

REALTY SERVICES, LTD.

FOR LEASE VALLE GREENE OFFICE CENTER

Fairborn, Ohio 45324



- 560 - 3,885 SF office space available for lease
- CUSTOM DESIGN AND FINISH-TO-SUIT OPPORTUNITIES with generous TI allowance available
- IDEAL LOCATION IN FAIRBORN on Dayton Yellow Springs Rd. just minutes from Wright-Patterson Air Force Base and Wright State University
- JUST OFF I-675 (EXIT 20) WITH EASY HIGHWAY ACCESS
- WELL SUITED FOR MEDICAL SPACE with ample and convenient parking
- QUIET, PARK-LIKE SETTING with professionally maintained landscaping
- PROFESSIONAL PROPERTY MANAGEMENT
- MONUMENT SIGNAGE available on Dayton-Yellow Springs Rd.
- CALL JOHN ORR AT 937-910-0851 for more information



WELCOME TO THE REGION WE KNOW

937-910-0851 • 3445 Newmark Drive, Miamisburg, Ohio 45342 • www.oberer.com/commercial

FOR LEASE

VALLE GREENE OFFICE CENTER

Fairborn, Ohio 45324



1. Allstate Insurance (1,287 SF)
2. Available (1,299 SF)
3. Available (1,299 SF)
4. Available (1,287 SF)
5. Dr. Joe Demeter (2,600 SF)
6. Available (900 SF)
7. Nationwide Insurance (514 SF)
8. Available (560 SF)
9. Available (560 SF)
10. Tim Norman's School of Kung Fu (1,469 SF)
11. Available (1,050 SF)
12. Available (1,200 SF)
13. Available (1,400 SF)
14. Hunter Health & Chiropractic (1,400 SF)
15. Available (1,152 SF)
16. Available (1,200 SF)
17. Cash America (1,400 SF)
18. NAMI of Clark County (2,774 SF)

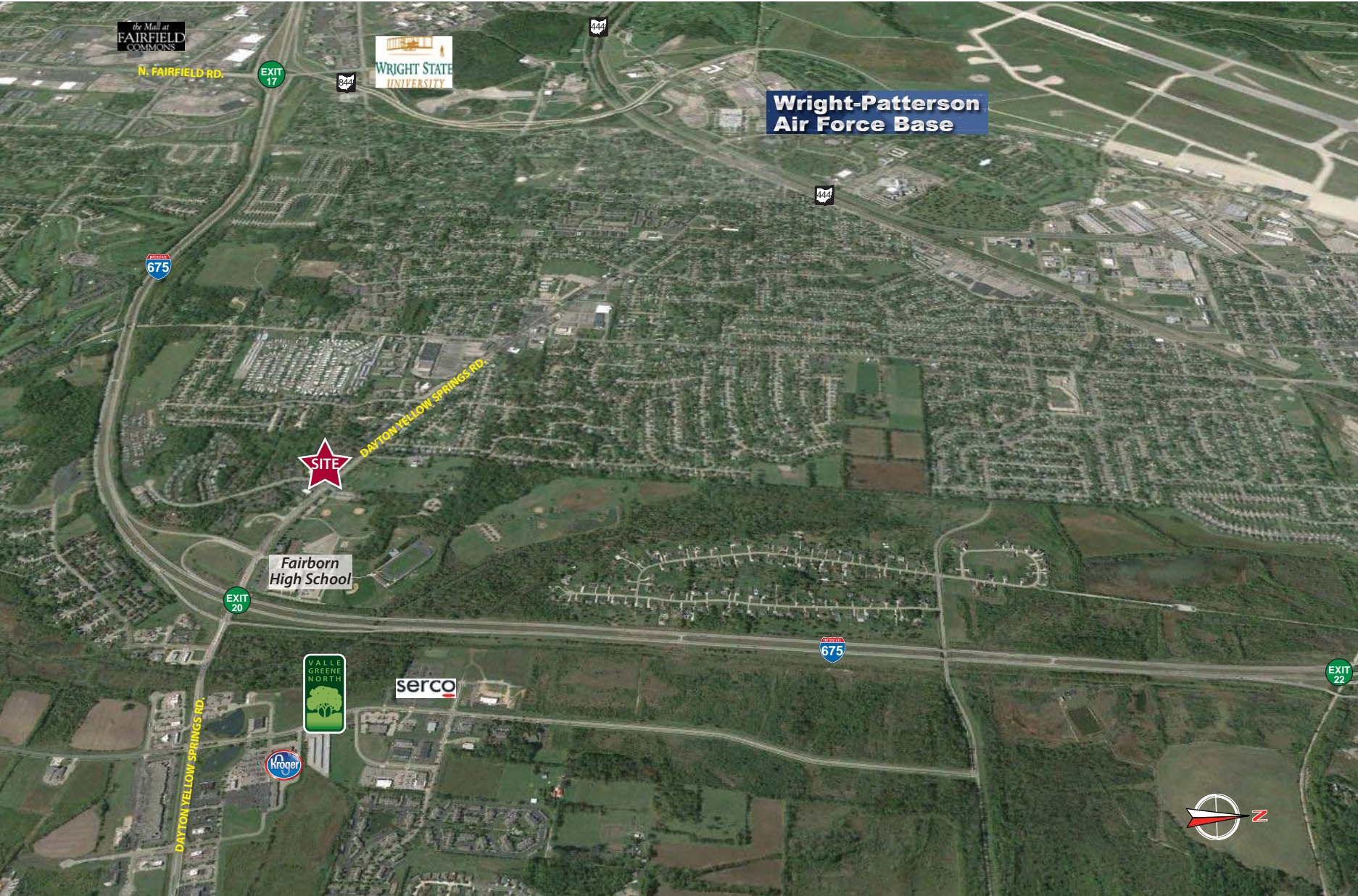
WELCOME TO THE REGION WE KNOW

937-910-0851 • 3445 Newmark Drive, Miamisburg, Ohio 45342 • www.oberer.com/commercial

FOR LEASE

VALLE GREENE OFFICE CENTER

Fairborn, Ohio 45324



WELCOME TO THE REGION WE KNOW

937-910-0851 • 3445 Newmark Drive, Miamisburg, Ohio 45342 • www.oberer.com