

DELIVERING IN Q3 2023

# BUCKEYE MEDICAL PLAZA



Southeast Quadrant Watson Road & Sundance Parkway, Buckeye, AZ 85326

Be the first medical providers in the City of Buckeye  
The fastest growing city in the United States

## GROUND UP CONSTRUCTION

UP TO +/-45,000 RENTABLE SF  
NEW MEDICAL OFFICE SPACE

**Melynn Wakeman**

President/Designated Broker  
Integrity Healthcare  
Practice Group

623.210.5027 Cell  
**623.455.8484 x700**  
1-800-563-9415

Melynn@IntegrityRealty4U.com  
**www.IntegrityRealty4U.com**

Revised 2/7/22



# SITEPLAN



## PROJECT DETAILS

### LOCATION HIGHLIGHTS

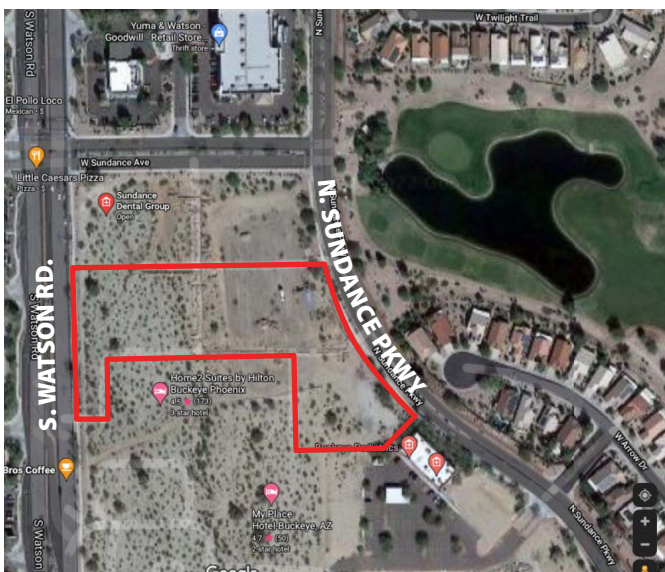
- One of the only medical office buildings offering medical services for the City of Buckeye
- Within 3 minutes of planned Abrazo Medical Hospital and Banner Buckeye Hospital
- ½ Mile south of the Watson & I-10 access
- Extensive retail amenities within walking distance

### OVERVIEW

- Approximately 22,500 RSF per floor
- Lease rate - Please Inquire
- Competitive TI Packages offered
- Convenient Surface Parking
- Parking Ratio: 5/1,000 RSF
- Elevator
- Prominent Watson Road frontage and signage

### SUITE FEATURES

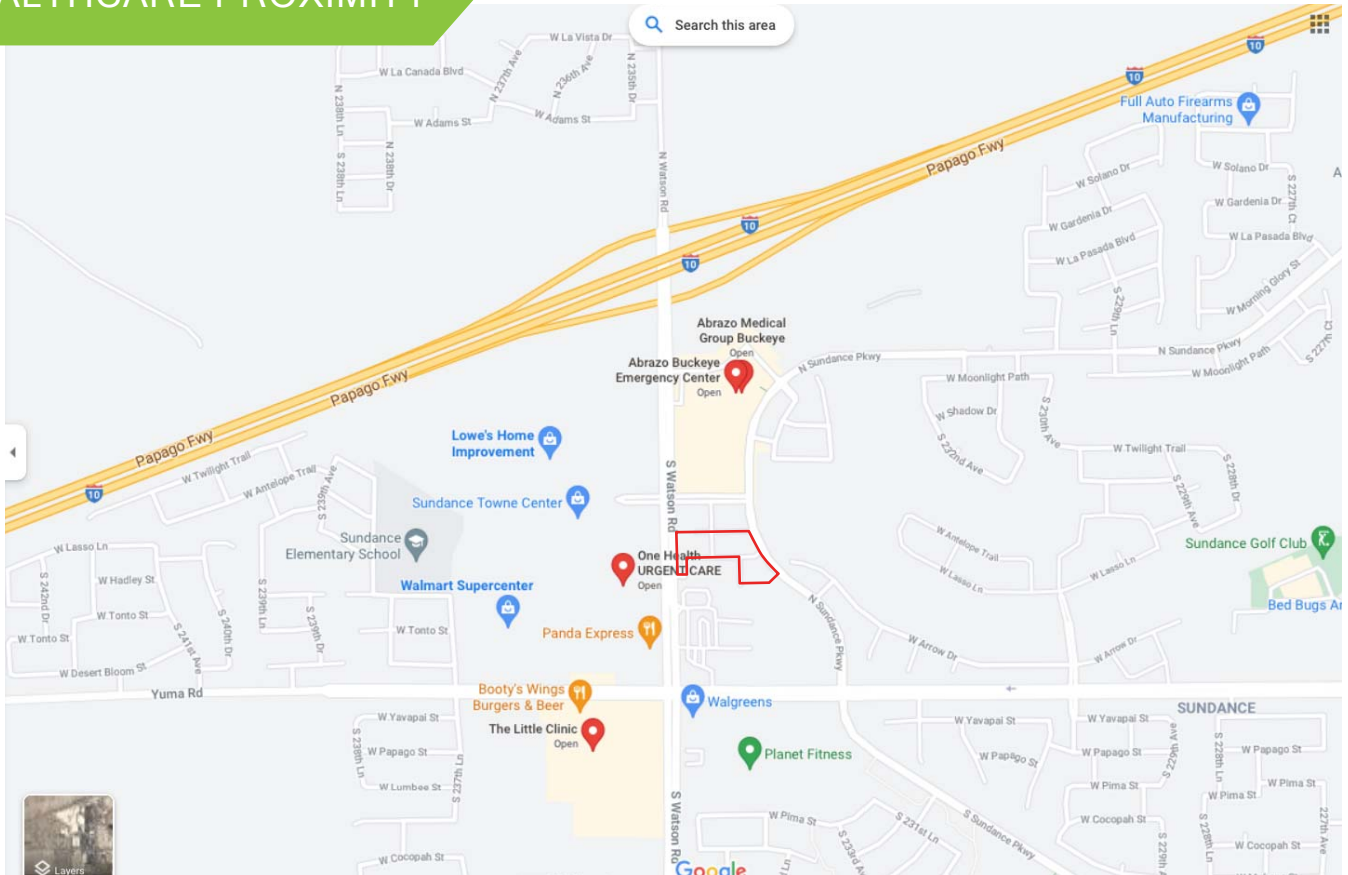
- Suites ranging from +/-2,500 SF - +/-45,000 SF
- Delivered in shell condition ready for tenant improvements

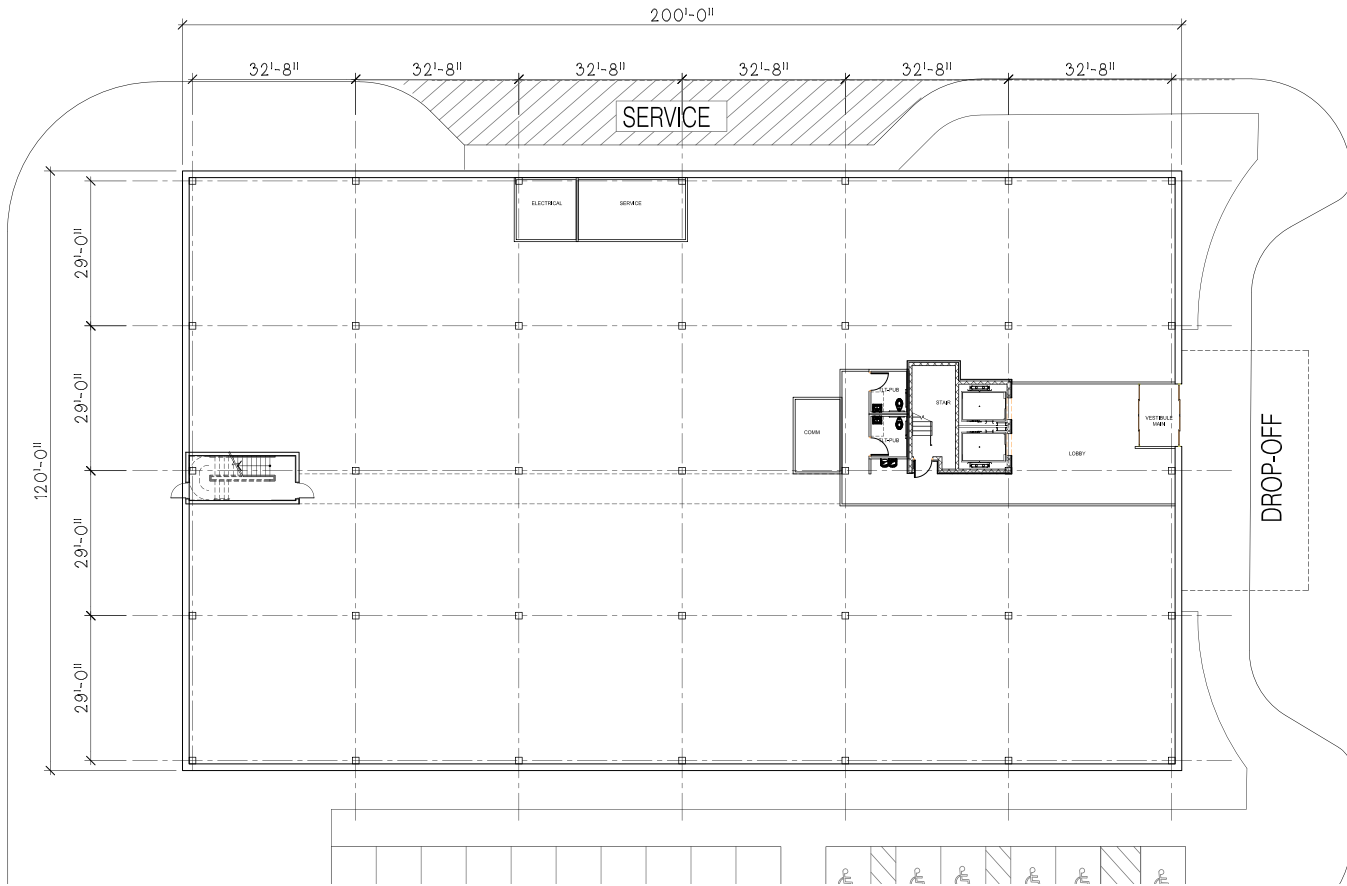




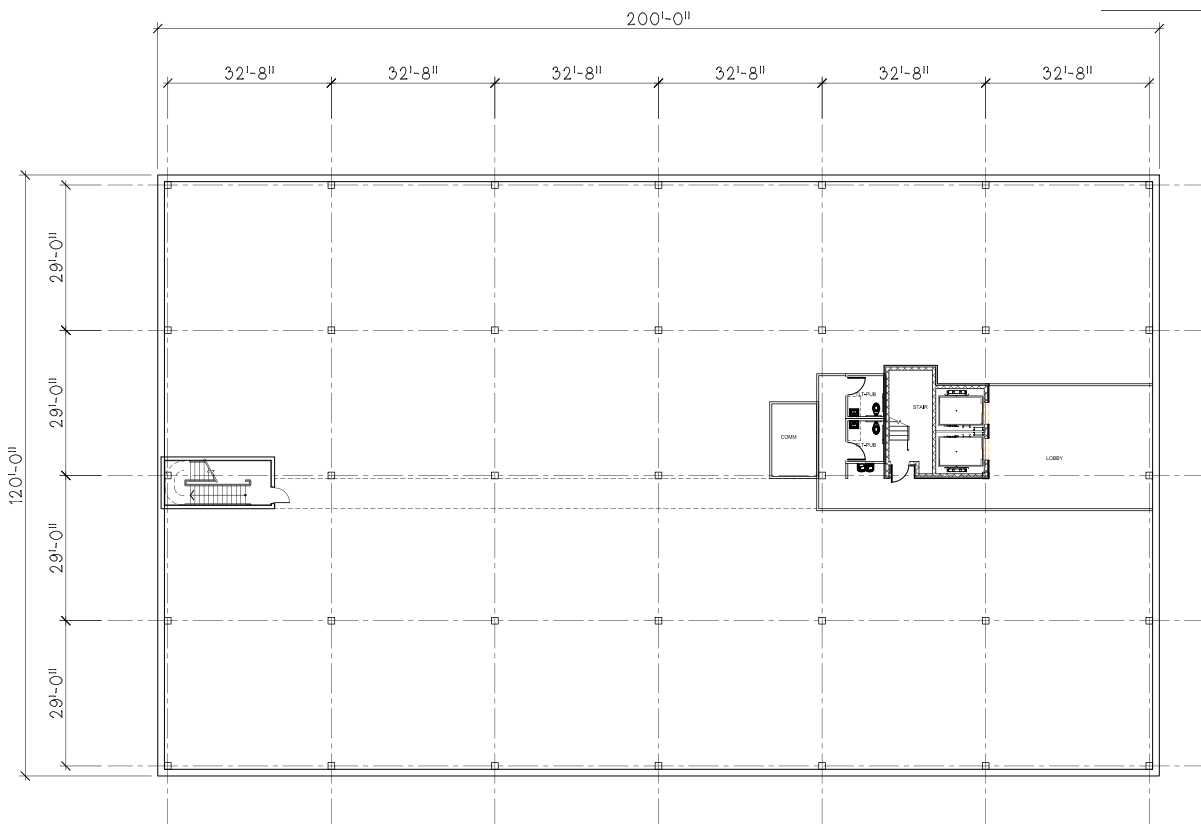


## HEALTHCARE PROXIMITY





**1ST FLOOR**  
SCALE 1" = 20'



**2ND FLOOR**  
SCALE 1" = 20'