

# WOODLAND OFFICE PARK

1536 North Woodland Park Boulevard, Layton, Utah 84041



# FOR LEASE

\$13.00/SF NNN

## PROPERTY FEATURES

- Building 1536 Suite 230: 4,268 SF Available
- Located Just North of Layton Hills Mall
- Centrally Located Between Ogden and Salt Lake City
- Many Nearby Amenities
- 82 Parking Stalls

FOR MORE  
INFORMATION  
CONTACT

CHRIS FALK, CCIM, SIOR  
801.416.1024  
chris.falk@ngkf.com

BRAXTON WILLIE, CCIM  
801.416.1050  
braxton.willie@ngkf.com

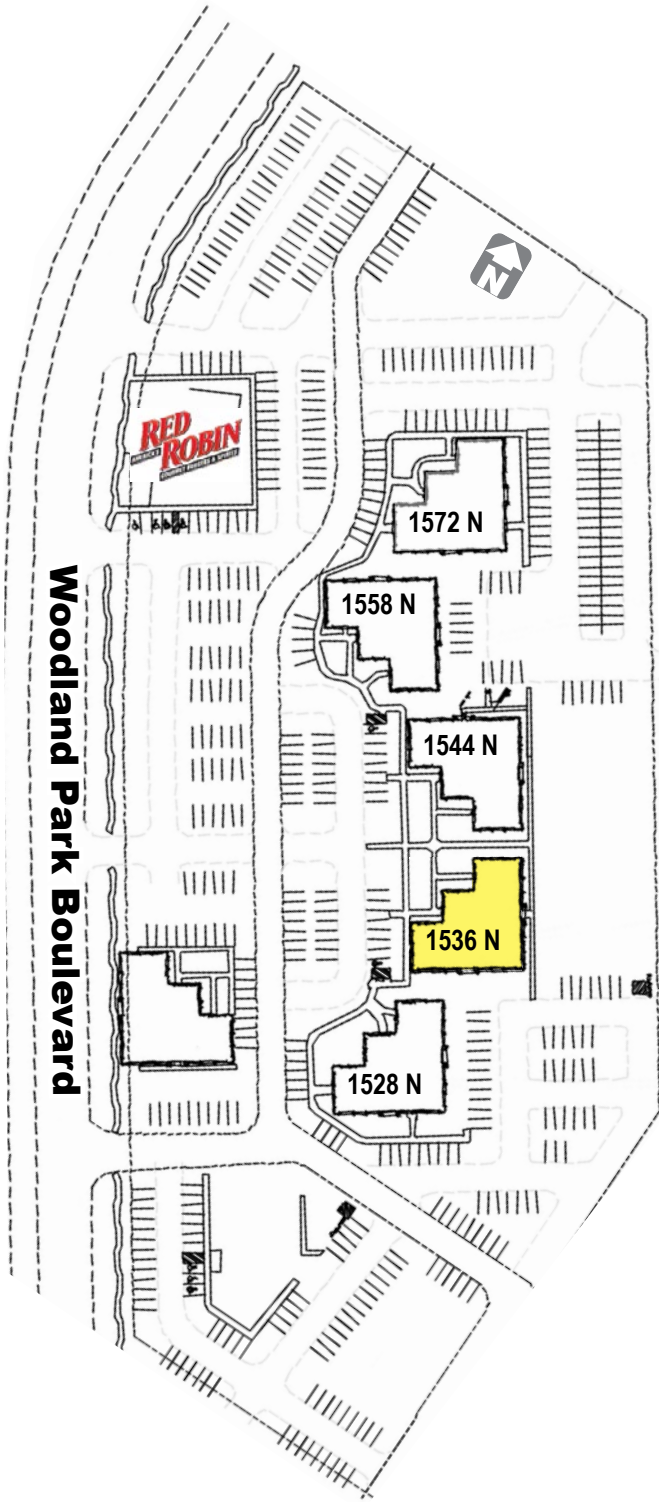


1755 East 1450 South, Suite 100 | Clearfield, Utah 84015 | 801.927.2000 | [www.ngacres.com](http://www.ngacres.com)

This document has been prepared by Newmark Knight Frank for advertising and general information purposes only. While the information contained herein has been obtained from what are believed to be reliable sources, the same has not been verified for accuracy or completeness. Newmark Knight Frank accepts no responsibility or liability for the information contained in this document. Any interested party should conduct an independent investigation to verify the information contained herein.

# WOODLAND OFFICE PARK

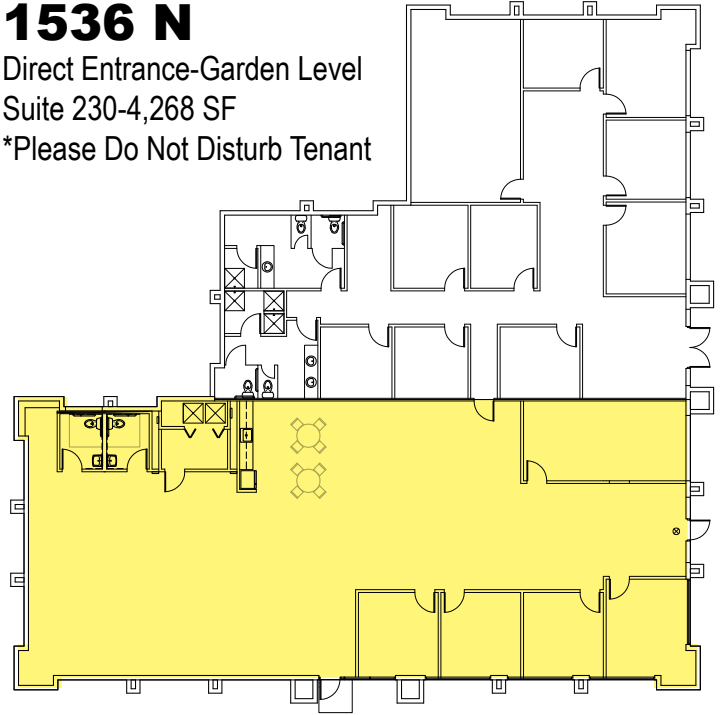
1536 North Woodland Park Boulevard, Layton, Utah 84041



## 1536 N

Direct Entrance-Garden Level  
Suite 230-4,268 SF

\*Please Do Not Disturb Tenant



# WOODLAND OFFICE PARK

1536 North Woodland Park Boulevard, Layton, Utah 84041

