

FOR LEASE

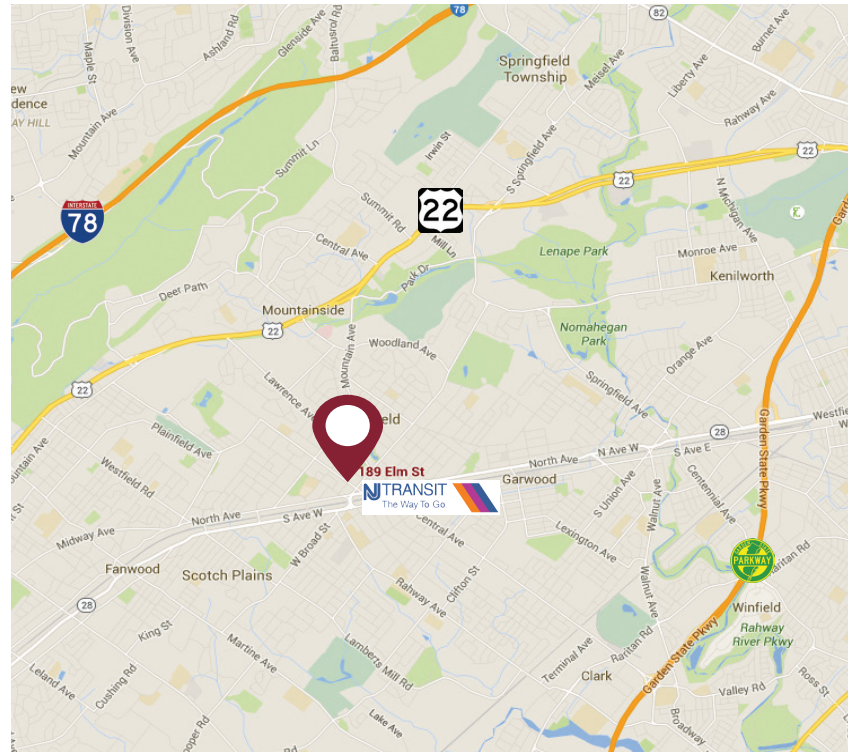
189 Elm Street
Westfield, NJ



NEW OWNERSHIP

FEATURES:

- **Availabilities:** 3,925 SF Office/Built-out Medical
- **Rental Rate:** \$27.00 NNN
- **Possession:** Immediate
- **High Visibility**
- **Parking:** On-site, Street Parking and Municipal Lot
- **Separate Entrance** to Unit
- **Prime Downtown Location** with Cosmopolitan Amenities within Walking Distance
- **Easy Access** to GSP, NJ Turnpike, Routes 78 & 22
- 15 Minutes to Newark Int'l Airport
- 40 Minutes to NYC
- Walking Distance to Train Station, Raritan Valley Line



EXCLUSIVE ▶
BROKER

ERICA DAVIDSON
Vice President

📞 0: 732.201.1124

📠 C: 973.214.9733

✉ erica.davidson@lee-associates.com

LICENSED REAL ESTATE BROKER

All information is from a source deemed reliable, however no representation, expressed or implied is made as to the accuracy of the information contained herein, and same is submitted subject to errors, omission, change of price, rental or other conditions imposed by our principals.



COMMERCIAL REAL ESTATE SERVICES

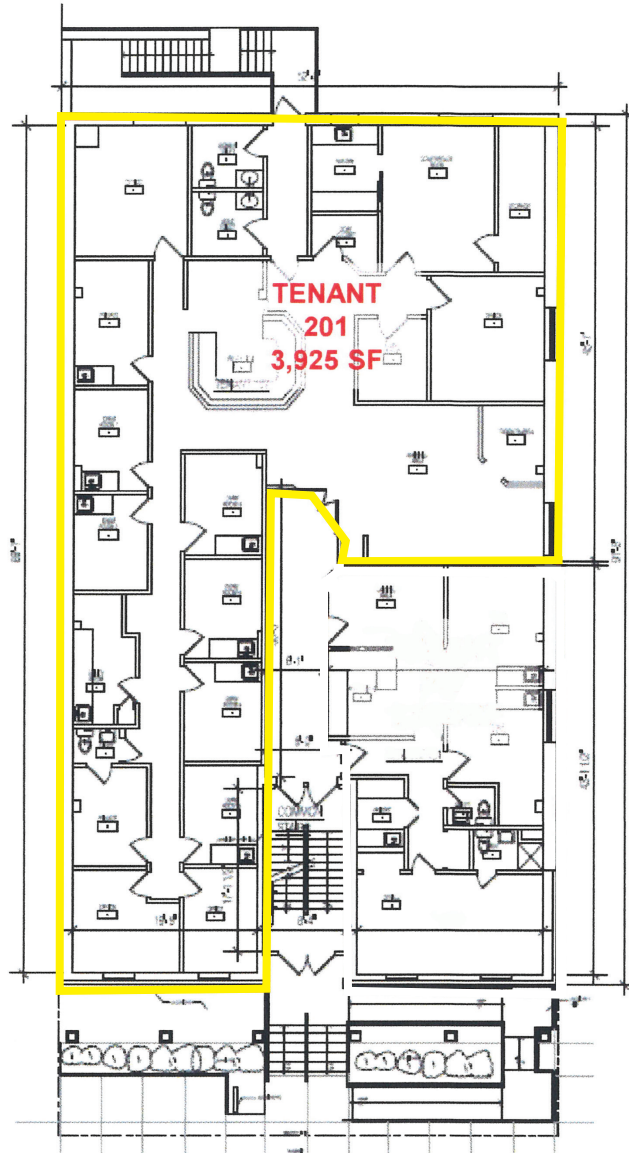
lee-associates.com

FOR LEASE

189 Elm Street
Westfield, NJ

FLOOR PLAN

2nd Floor Level:



CALL 732.204.1124 FOR MORE INFORMATION!

LICENSED REAL ESTATE BROKER

All information is from a source deemed reliable, however no representation, expressed or implied is made as to the accuracy of the information contained herein, and same is submitted subject to errors, omission, change of price, rental or other conditions imposed by our principals.



lee-associates.com