

# 67 PRINCE STREET



# SPACE DETAILS

## LOCATION

Northeast corner of Crosby Street

## APPROXIMATE SIZE

Ground Floor	978 SF
Basement	1,050 SF
Total	2,028 SF

## CEILING HEIGHT

Ground Floor	20 FT
Basement	10 FT

## FRONTAGE

60 FT wraparound on Prince and Crosby Streets

## POSSESSION

Arranged

## TERM

Sublease through December 31, 2024

## SITE STATUS

Currently T2

## NEIGHBORS

Equinox, Scotch & Soda, Maison Kitsune, Rachel Comey, Dig and Dagne Dover (coming soon)

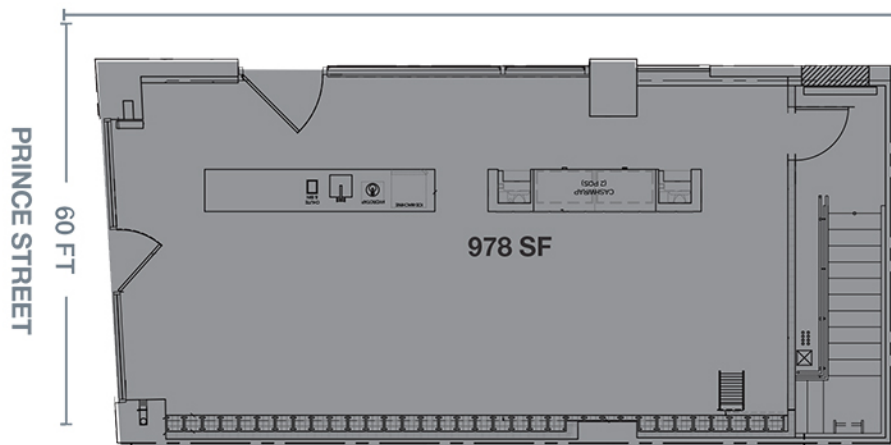
## COMMENTS

Prime SoHo corner sublease opportunity

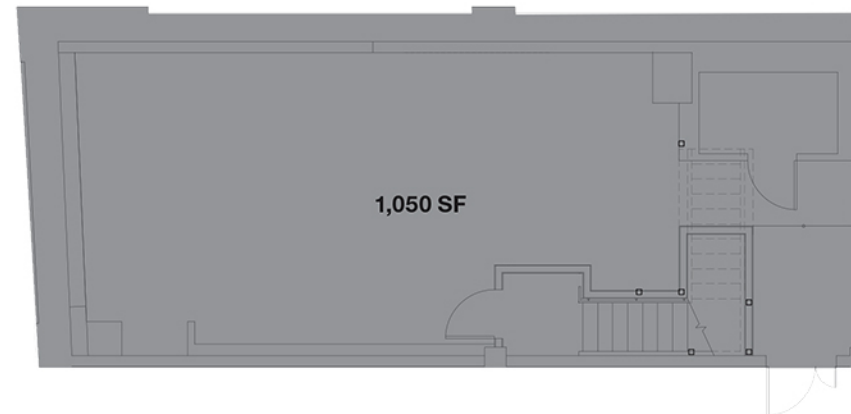
Steps from the **N** **R** subway lines

## GROUND FLOOR

CROSBY STREET



## BASEMENT



# AREA NEIGHBORS



# CONTACT EXCLUSIVE AGENTS

**PIERCE THOMPSON**  
212.916.3361  
pierce.thompson@ngkf.com

**CALEB PETERSEN**  
212.351.9347  
caleb.petersen@ngkf.com

