



CONFIDENTIAL LISTING



27,900 ADT

3000 PLAINFIELD ROAD



Plainfield Road/US-30

OUTPARCEL TO JOLIET MALL
JOLIET, IL



AVAILABLE FOR LEASE
OR GROUND LEASE

SECOND GENERATION RESTAURANT AVAILABLE

3000 PLAINFIELD ROAD

Outparcel to Louis Joliet Mall | Joliet, IL

Confidential Listing - Do Not Disturb Tenant



SPACE AVAILABLE

Second Generation Restaurant Building: 5,280 SF
 Site: 1.07 AC

SITE SUMMARY

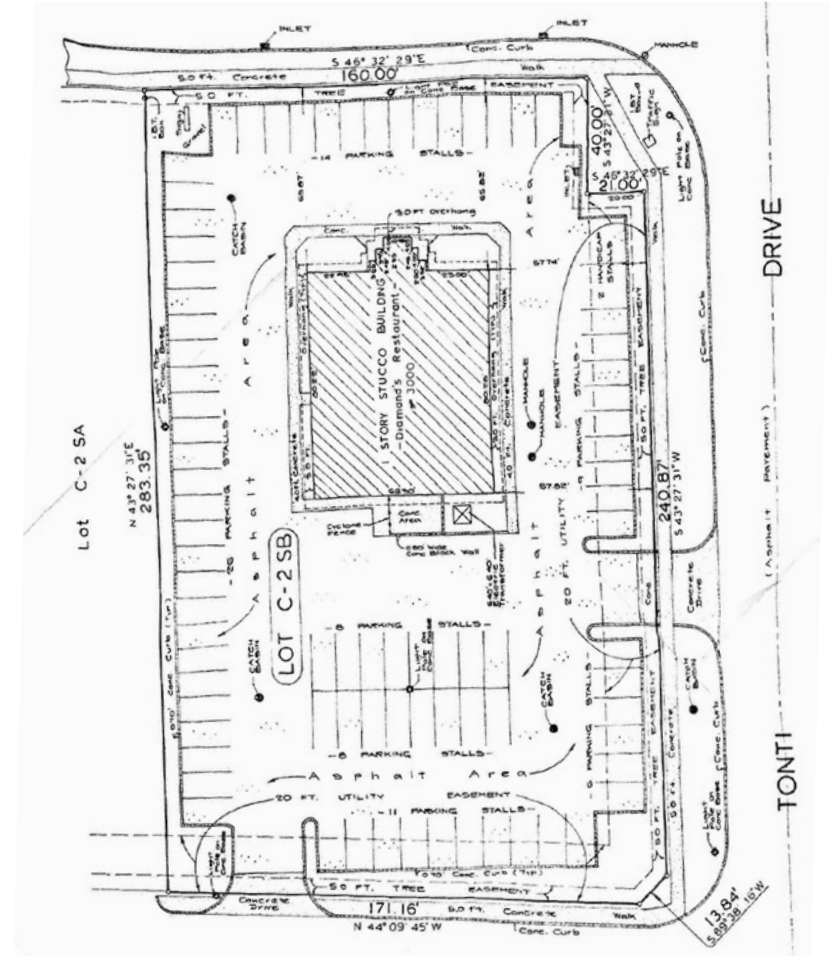
- Still Operating; Do Not Disturb Restaurant Employees
- Outparcel to Louis Joliet Mall
- Strong regional destination near intersection of I-55 & US Route 30
- High Demand, high barrier to entry market

CO-TENANCY



POPULATION DENSITY	4,459	1 Mile
	32,838	3 Mile
	87,009	5 Mile
AVERAGE HH INCOME	\$83,494	1 Mile
	\$88,796	3 Mile
	\$87,483	5 Mile

Plainfield Road



Colorado Avenue

GROUND LEASE AVAILABLE WITH PLAINFIELD ROAD FRONTAGE

3000 PLAINFIELD ROAD

Outparcel to Louis Joliet Mall | Joliet, IL

Confidential Listing - Do Not Disturb Tenant



CONTACT

Matt Cavanagh
matt@arcgrp.com
(630) 908-5694

Al Rodenbostel
al@arcgrp.com
(630) 908-5701

© 2019 A-R-C Real Estate. All information is from sources believed reliable, not independently verified, and thus subject to errors, omissions, and modifications such as price, listing, square footage, rates and commissions. All information, estimates and projections subject to change, market assumptions, unknown facts and conditions, and future potentialities. A-R-C Real Estate makes no express or implied representations or warranties, as facts and results may vary materially from all information, estimates and projections. All renderings presented are conceptual.

