

CREEKSIDE OFFICE PARK

5851 TIMUQUANA RD, UNIT 104, JACKSONVILLE, FL 32210

OFFICE CONDO
FOR SALE



Size: 1,125 Square Feet Sale Price: \$105,000 (\$93.33/SF) Zoning: CO—Commercial Office

End-unit 1,125 square foot professional office condominium located in the Creekside Office Park, with a durable brick exterior. Unit 104 has an attractive and efficient build-out that includes a reception area, five private offices (some large enough for use as a conference room), an ADA restroom, a small break area, and attic storage via pull-down stairs. Owners' Association fees are \$209.00 per month.

- Built in 2006
- Central Jacksonville location
- Near I-295 and I-10
- End unit condominium
- Brick exterior
- Attractive and efficient build-out

Located on Timuquana Road between US-17 and Blanding Blvd. The central Jacksonville location offers easy access to both I-295 and I-10. The property is in close proximity to Orange Park, NAS Jax, the Riverside/Avondale area, and Cecil Commerce Center.

Seller financing with attractive terms is available, subject to satisfactory credit review of Purchaser

Don DePietto, Broker Associate

Phone: (904) 517-1450



CORVUS
COMMERCIAL REALTY

www.jaxoffice.com

9424 Baymeadows Road, Suite 100 • Jacksonville, FL 32256

Office : (904) 265-1500 • Fax : (904) 265-1505

The information contained herein was obtained from reliable sources and is believed to be correct. However, all information presented should be verified as it is subject to errors and omissions. Property may be withdrawn from the market at any time without further notice. Copyright © 2010-2014 Corvus Commercial Realty, LLC.

Last Updated: September 21, 2015

CREEKSIDE OFFICE PARK

5851 TIMUQUANA RD, UNIT 104, JACKSONVILLE, FL 32210

PROPERTY
PHOTOS



Don DePietto, Broker Associate

Phone: (904) 517-1450
don@jaxoffice.com



CORVUS
COMMERCIAL REALTY

www.jaxoffice.com

9424 Baymeadows Road, Suite 100 • Jacksonville, FL 32256
Office : (904) 265-1500 • Fax : (904) 265-1505

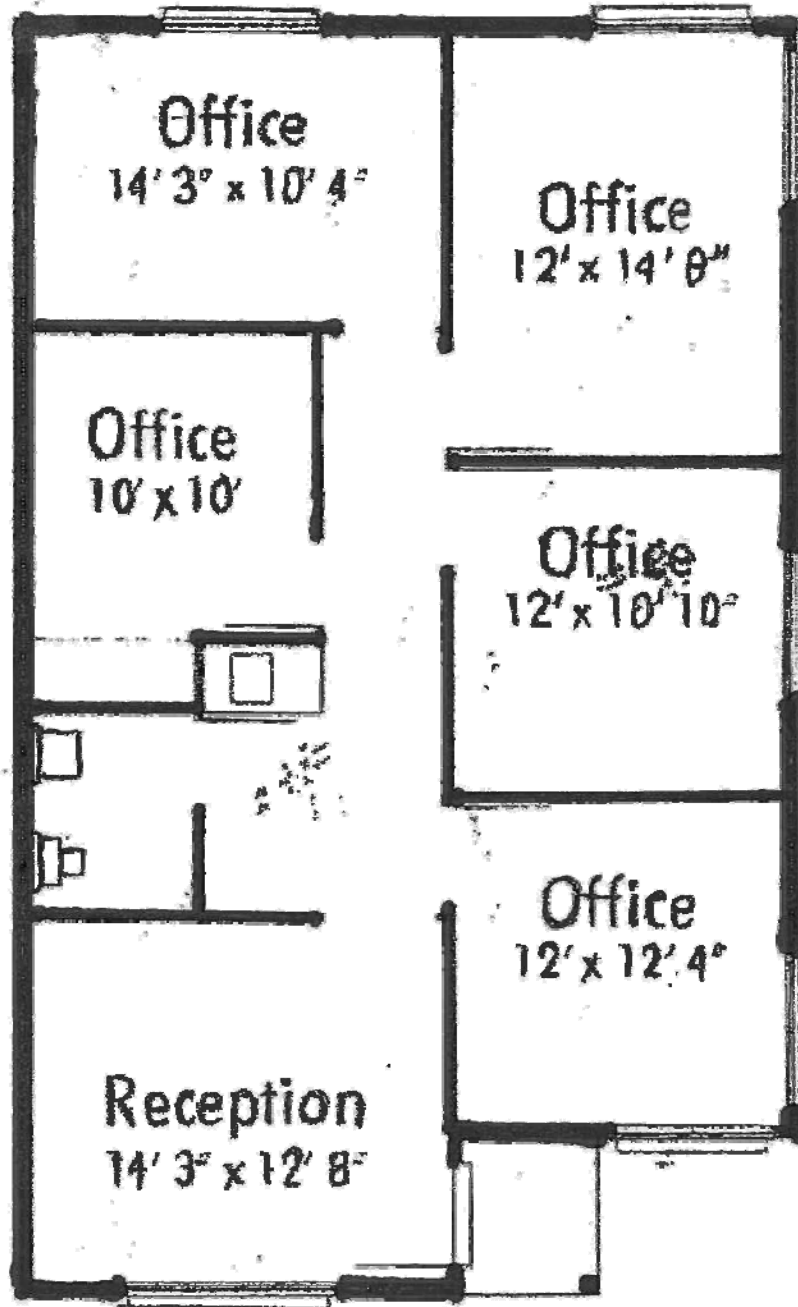
The information contained herein was obtained from reliable sources and is believed to be correct. However, all information presented should be verified as it is subject to errors and omissions. Property may be withdrawn from the market at any time without further notice. Copyright © 2010-2014 Corvus Commercial Realty, LLC.

Last Updated: September 21, 2015

CREEKSIDE OFFICE PARK

5851 TIMUQUANA RD, UNIT 104, JACKSONVILLE, FL 32210

FLOOR
PLAN



*Single Office Suite Floor Plan
1,125 sq. ft.*

Don DePietto, Broker Associate

Phone: (904) 517-1450

don@jaxoffice.com



CORVUS
COMMERCIAL REALTY

www.jaxoffice.com

9424 Baymeadows Road, Suite 100 • Jacksonville, FL 32256

Office : (904) 265-1500 • Fax : (904) 265-1505

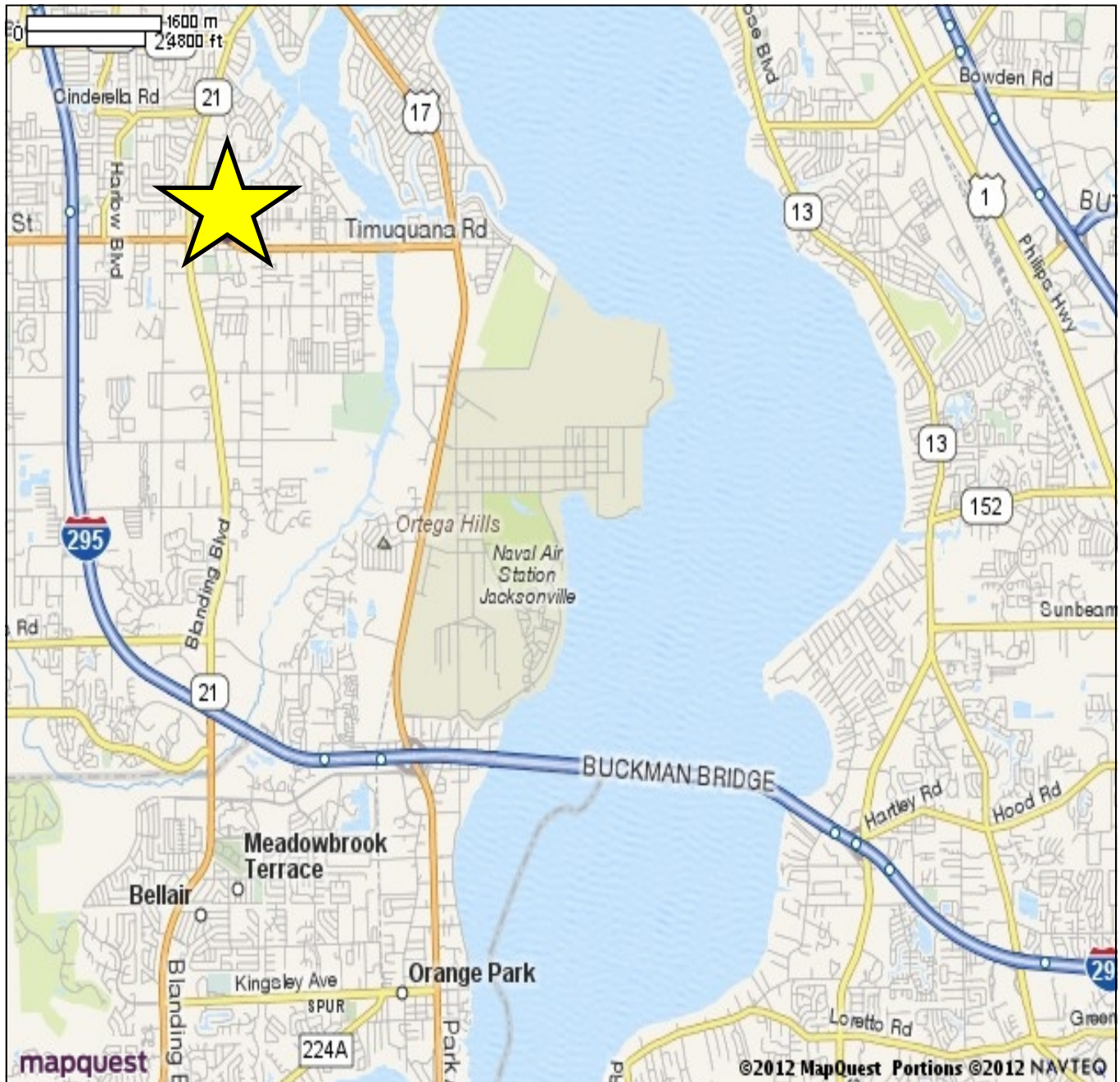
The information contained herein was obtained from reliable sources and is believed to be correct. However, all information presented should be verified as it is subject to errors and omissions. Property may be withdrawn from the market at any time without further notice. Copyright © 2010-2014 Corvus Commercial Realty, LLC.

Last Updated: September 21, 2015

CREEKSIDE OFFICE PARK

5851 TIMUQUANA RD, UNIT 104, JACKSONVILLE, FL 32210

AERIAL
MAP



Don DePietto, Broker Associate

Phone: (904) 517-1450
don@jaxoffice.com



CORVUS
COMMERCIAL REALTY

www.jaxoffice.com

9424 Baymeadows Road, Suite 100 • Jacksonville, FL 32256
Office : (904) 265-1500 • Fax : (904) 265-1505

The information contained herein was obtained from reliable sources and is believed to be correct. However, all information presented should be verified as it is subject to errors and omissions. Property may be withdrawn from the market at any time without further notice. Copyright © 2010-2014 Corvus Commercial Realty, LLC.

Last Updated: September 21, 2015