



FOR LEASE OR SUBLEASE

**1910 Prospector Avenue**

Park City, Utah 84060

THE PIONEER BUILDING



## Office space Available in Park City

### Property Highlights

**Main Level** - Suite C: 660 SF

**Basement Level** - Suite B-2: 1,586 SF  
**\$12 - \$18 NNN**



### Demographics

	1 Mile	3 Mile	5 Mile
<b>Population</b>			
2015 Estimated Population	4,797	9,450	18,383
2021 Projected Population	5,197	10,275	21,348
<b>Households</b>			
2016 Estimated Households	1,661	3,546	6,777
2021 Projected Households	1,795	3,850	7,800
2016 Est. Median HH Income	\$83,883	\$89,893	\$94,772
2016 Est. Average HH Income	\$115,822	\$123,261	\$126,209
2016 Est. Per Capita HH Income	\$41,214	\$46,264	\$46,598

*Source: U.S. Census Bureau, Census 2010 Data. Esri forecasts for 2016 and 2021.*

### Steven Hooker

Director | Office/Investment/Retail/Land  
+1 435 575 5607  
steve.hooker@cushwake.com

1794 Olympic Parkway, Suite 130  
Park City, Utah 84098  
Main +1 435 575 5600  
Fax +1 435 575 5640  
**cushmanwakefield.com**



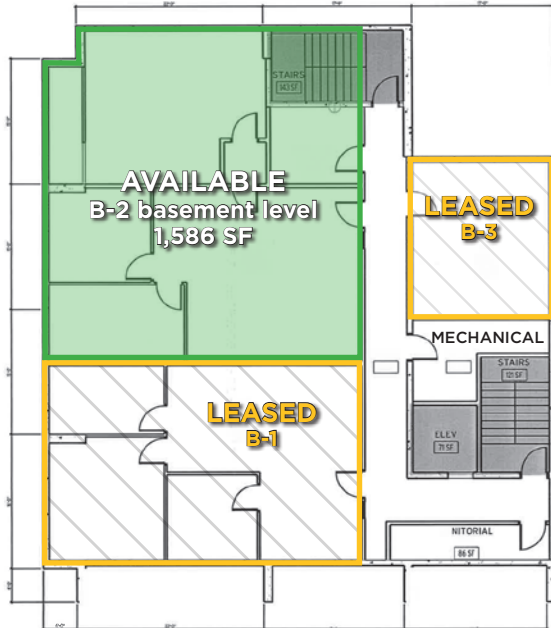
**CUSHMAN &  
WAKEFIELD**

FOR LEASE OR SUBLEASE

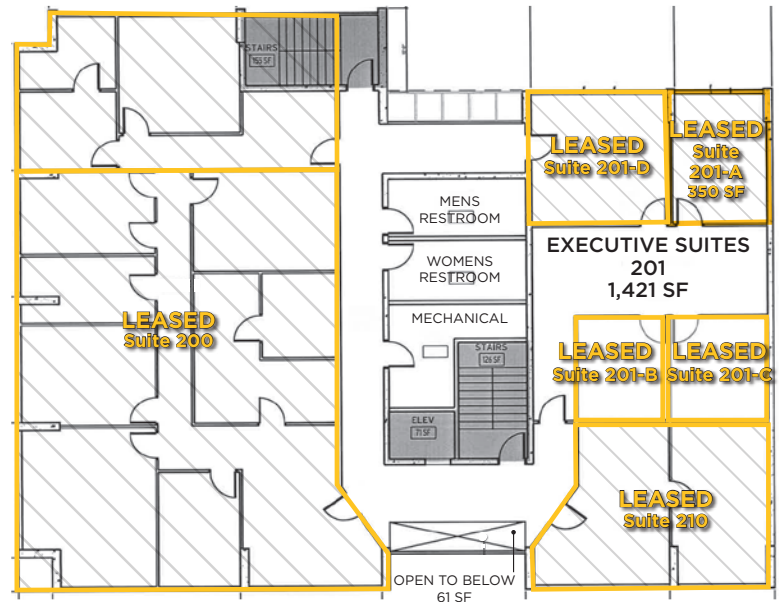
**1910 Prospector Avenue**

Park City, Utah 84060

### Basement

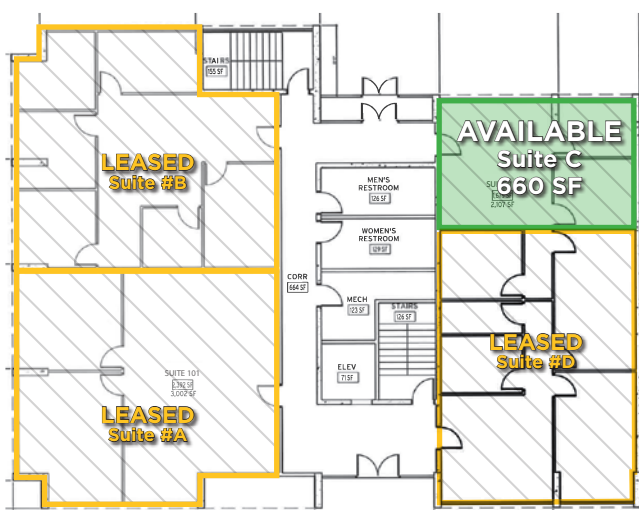


### 2<sup>nd</sup> Level



**AVAILABLE**  
**LEASED**

### Main Level



### 3<sup>rd</sup> Level



**Steven Hooker**

Director | Office/Investment/Retail/Land  
+1 435 575 5607  
steve.hooker@cushwake.com

1794 Olympic Parkway, Suite 130  
Park City, Utah 84098  
Main +1 435 575 5600  
Fax +1 435 575 5640  
[cushmanwakefield.com](http://cushmanwakefield.com)