



# MISSION CITY

2355-2385 Northside Drive

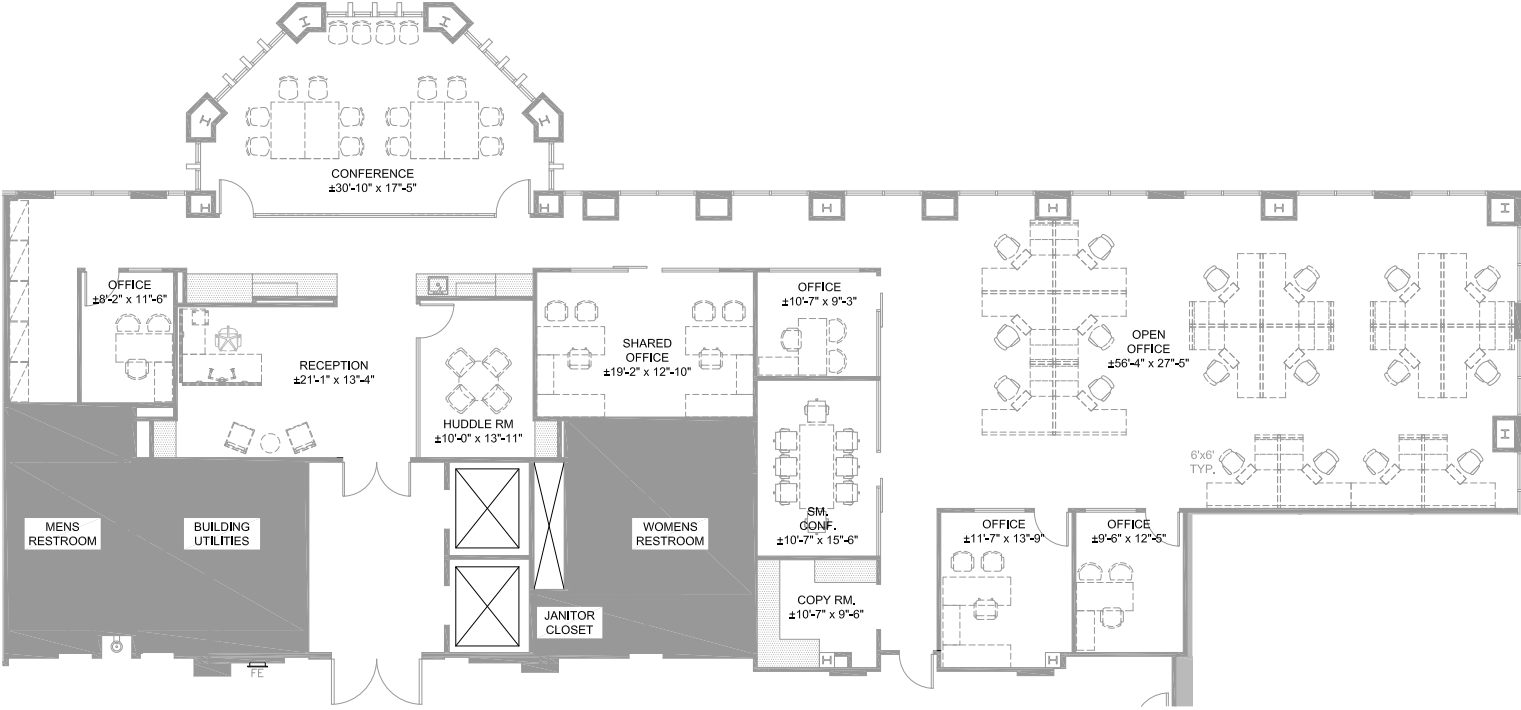
**Mission Valley's Premier Campus Environment**

# Availability

Address/Building RSF	Suite	Approx SF	Available	Virtual Tour Link
2355 Northside Drive 53,610 SF	2355 - Suite 250	5,371	Spec suite. Available now	<a href="#">Tour Suite 250</a>
2365 Northside Drive 96,436 SF	2365 - Suite 550	3,939	Available 6/1/23. Double door glass entry, views, mostly open layout.	
	2365 - Suite 560	2,726	Upgraded build out with many creative elements and enhancements. Efficient layout includes: glass entry door at reception, conference room, 3 offices, copy center, open kitchen and open area.	<a href="#">Tour Suite 560</a>
	2365 - Suite 575	3,897	Highly upgraded space with open ceiling, hard surface flooring, large breakroom.	<a href="#">Tour Suite 575</a>
2375 Northside Drive 51,516 SF	2375 - Suite 125	4,899	New construction underway! Major upgrades throughout: open ceiling, polished concrete flooring, feature chandelier, hard surface counter top + more! Ground floor with prominent double door glass entrance. Dramatic 14' ceiling height.	<a href="#">Tour Suite 125</a>
2385 Northside Drive 89,023 SF	2385 - Suite 100	27,497	Now under construction! Divisible to 1- 4 suites ranging in size from 5,000 SF to 9,800 SF. Flexible demising wall location.	<a href="#">Tour Suite 100</a>

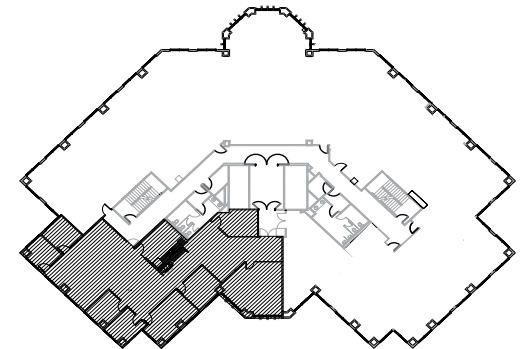
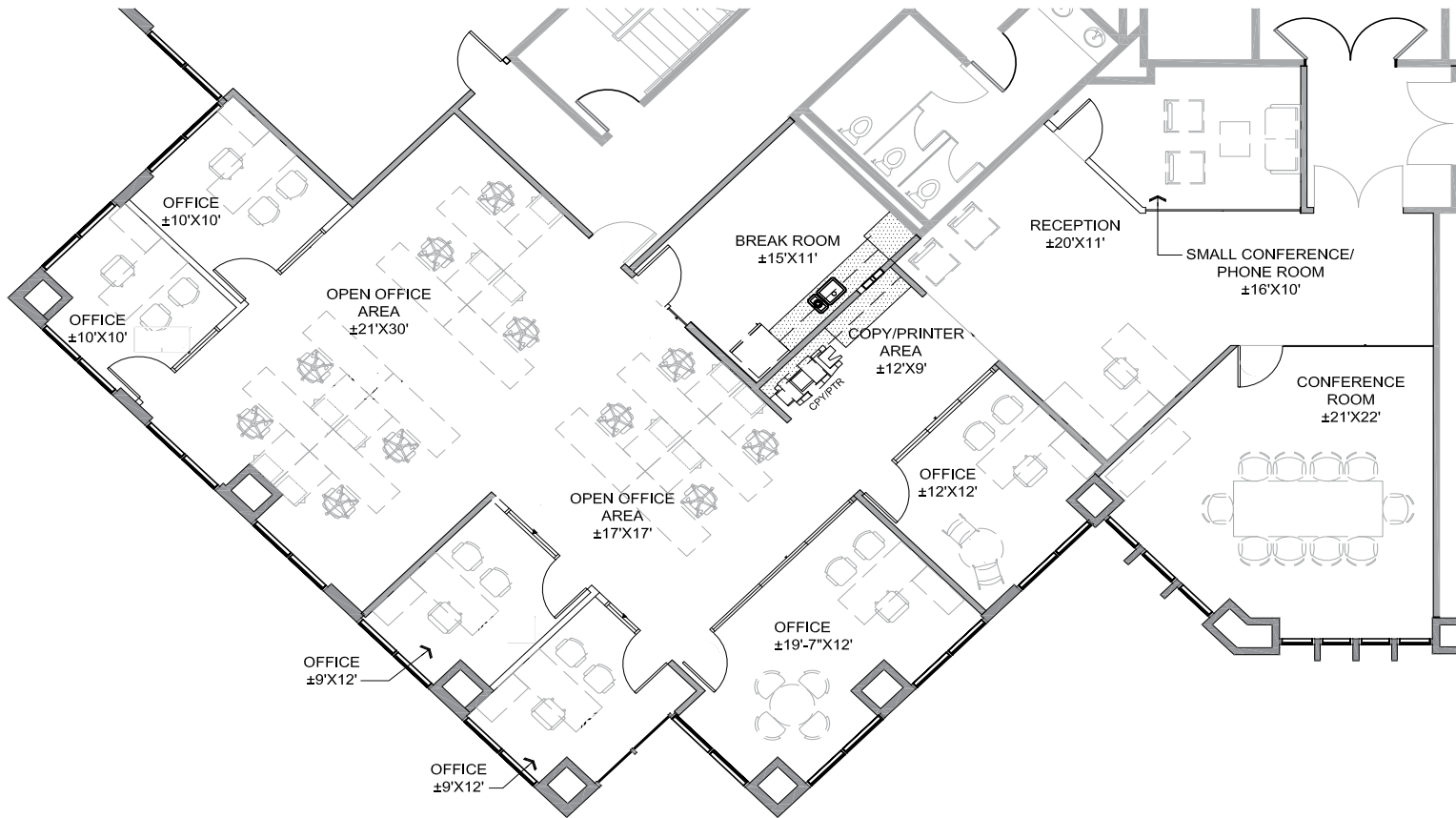
# 2355 NORTHSIDE DRIVE

**SUITE 250 | 5,371 SF**  
SPEC SUITE. AVAILABLE NOW.



# 2365 NORTHSIDE DRIVE

**SUITE 550 | 3,939 SF**  
AS-BUILT | DOUBLE DOOR GLASS ENTRY, VIEWS, MOSTLY OPEN LAYOUT



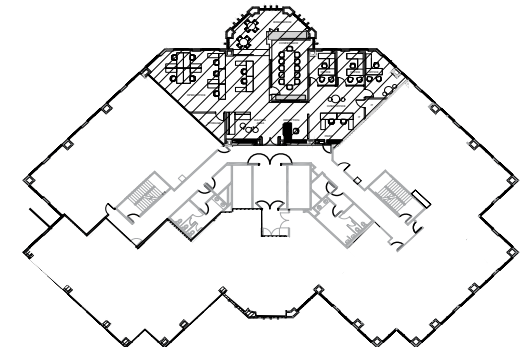
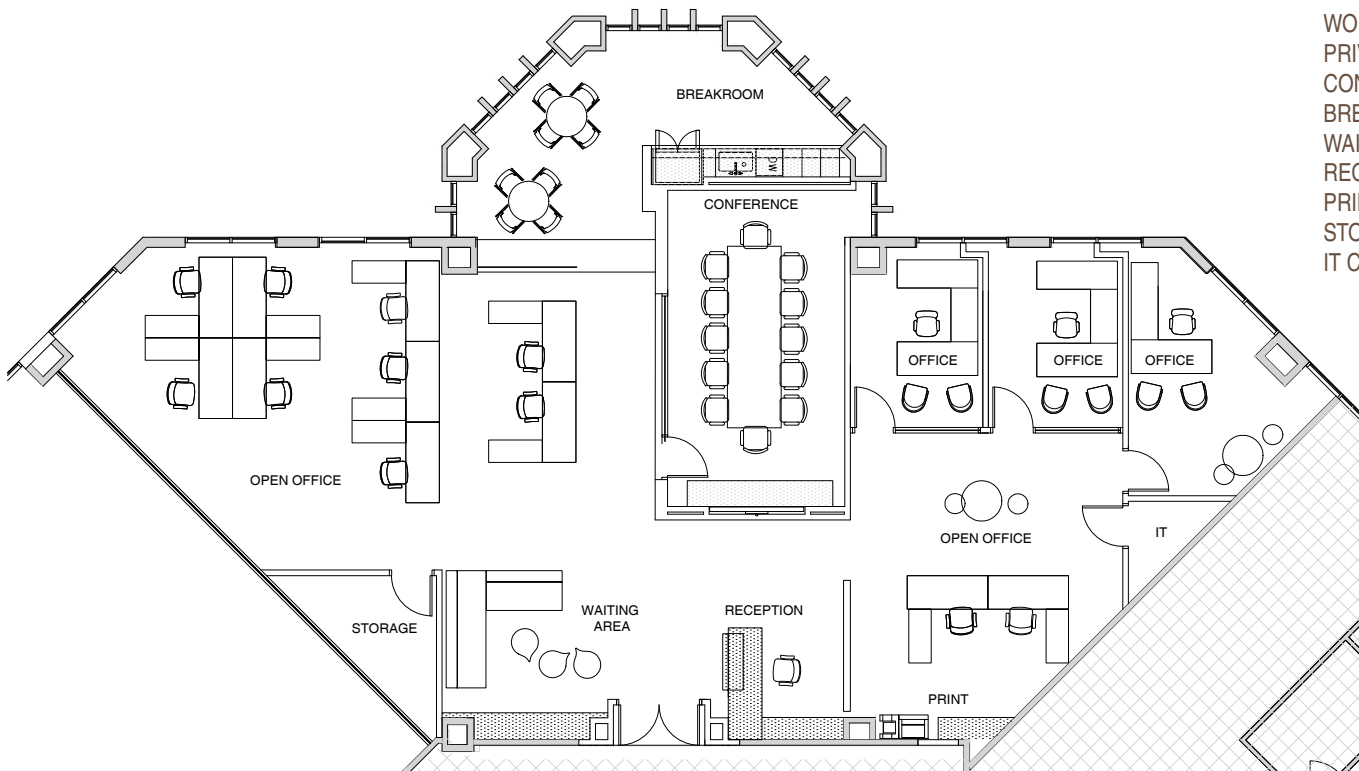
# 2365 NORTHSIDE DRIVE

**SUITE 575 | 3,897 SF**

**AS-BUILT | HIGHLY UPGRADED SPACE WITH OPEN CEILING, HARD SURFACE FLOORING, LARGE BREAKROOM .**

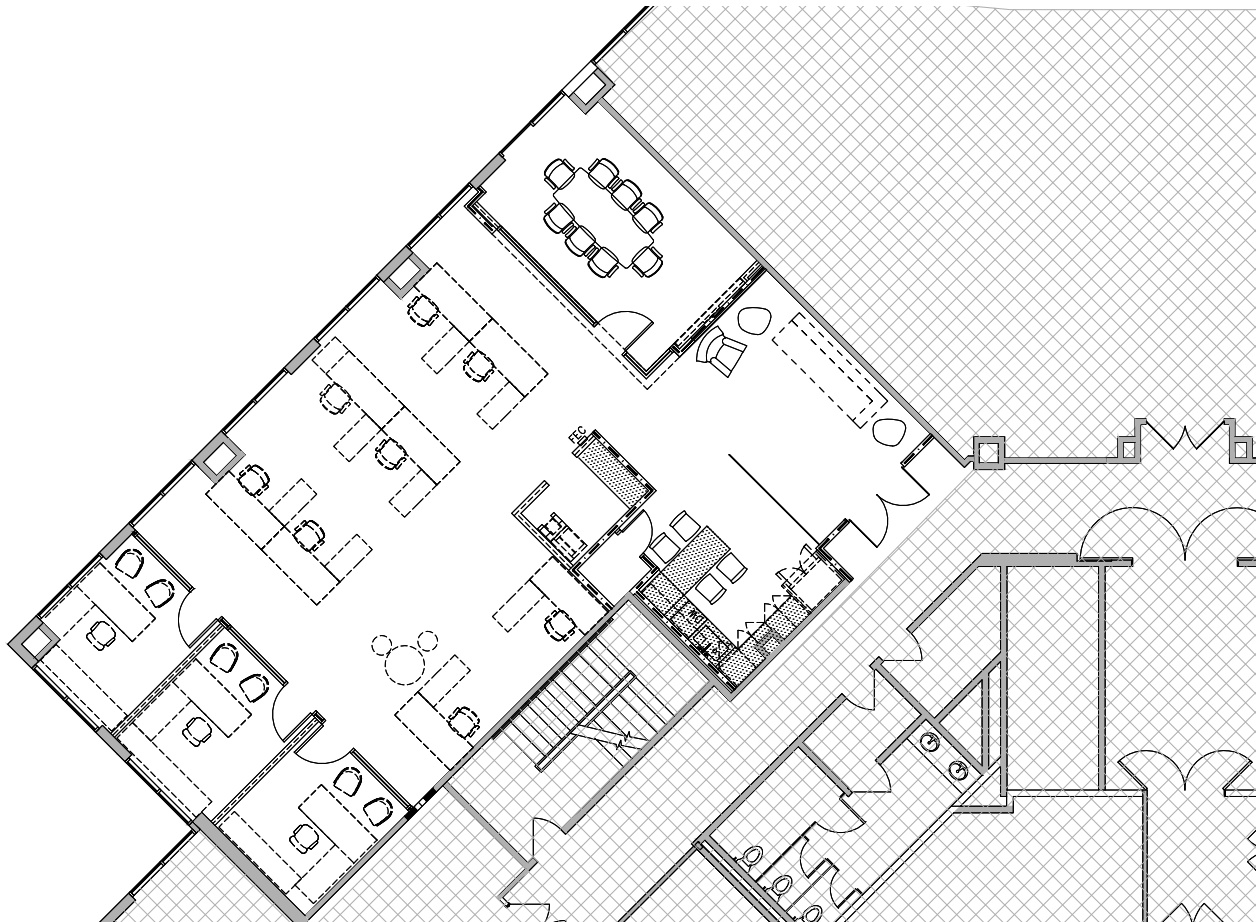
## SPACE INVENTORY

ROOM	COUNT	SIZE
WORKSTATIONS	11	6' X 6'
PRIVATE OFFICE	3	10' X 13'-9"
CONFERENCE ROOM	1	13'-2" X 23'-6"
BREAK ROOM	1	301 S.F.
WAITING AREA	1	13'-1" X 12'-6"
RECEPTION	1	9'-11" X 12'-6"
PRINT	1	10'-4" LINEAR
STORAGE	1	80 S.F.
IT CLOSET	1	21 S.F.



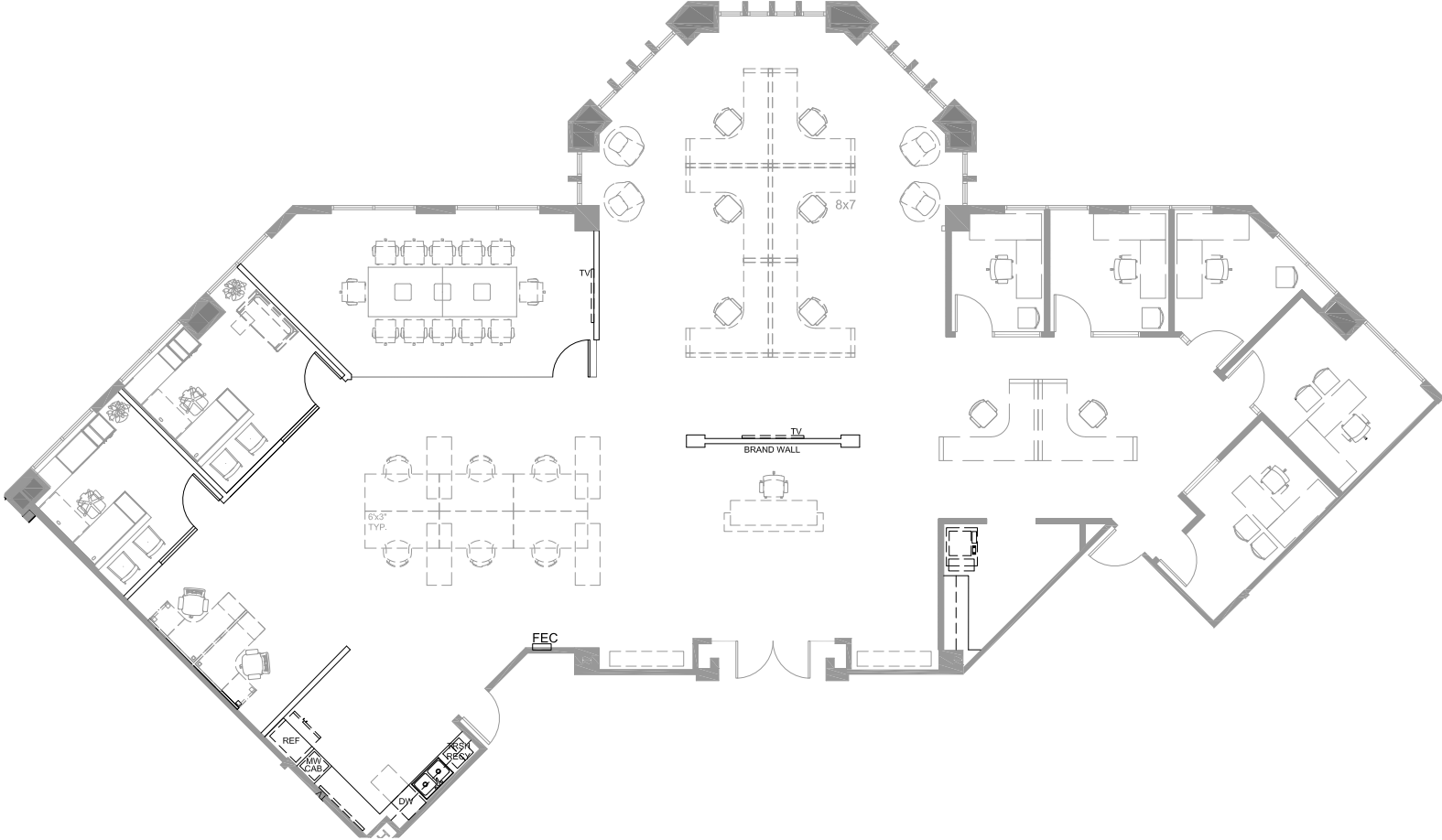
# 2365 NORTHSIDE DRIVE

**SUITE 560 | 2,726 SF**  
AS-BUILT | UPGRADED BUILD OUT WITH CREATIVE ELEMENTS THROUGHOUT.



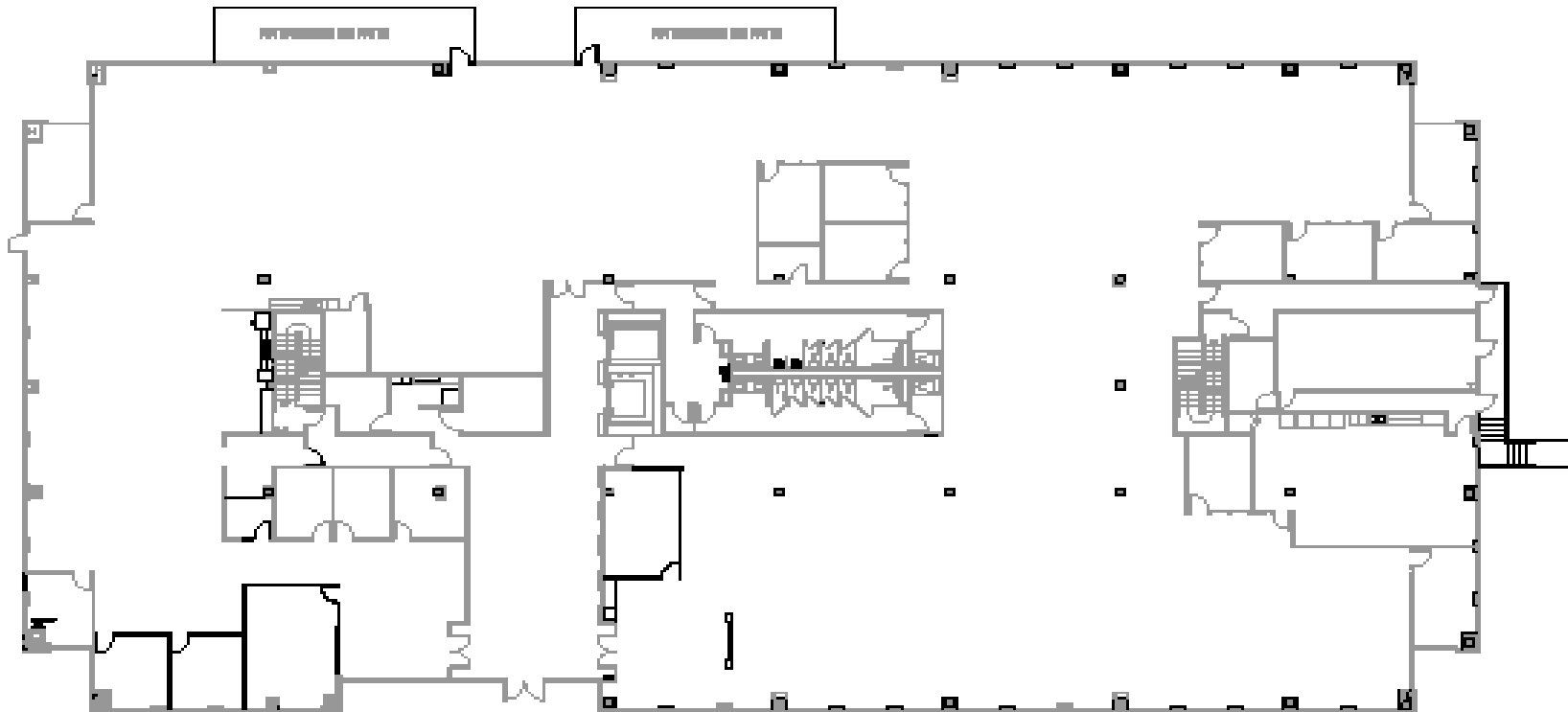
# 2375 NORTHSIDE DRIVE

**SUITE 125 | 4,899 SF**  
**HIGHLY UPGRADED SUITE NOW UNDER CONSTRUCTION | OPEN CEILING, POLISHED CONCRETE, PROMINENT ENTRY!**



# 2385 NORTHSIDE DRIVE

**SUITE 100 | 27,497 SF**  
NOW UNDER CONSTRUCTION | DIVISIBLE TO  $\pm$  5,000 RSF TO 10,000 RSF





# 2385 NORTHSIDE DRIVE

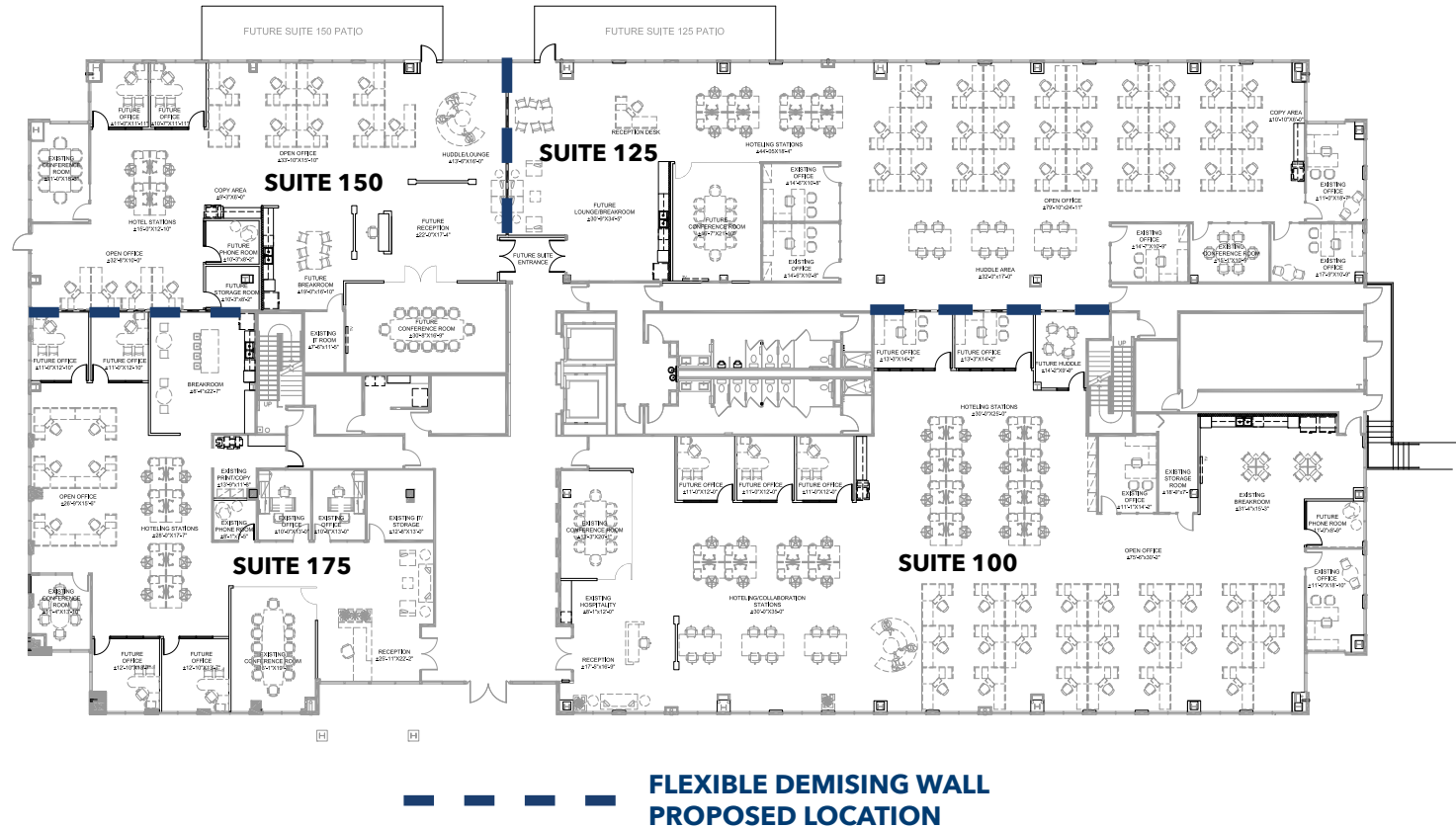
## SUITE 100 PROPOSED DEMISING OPTIONS AND HYPOTHETICAL FLOOR PLANS | 27,497 RSF

SUITE 100: ± 9,808 RSF

SUITE 150: ± 5,046 RSF

SUITE 125: ± 7,739 RSF

SUITE 175: ± 4,995 RSF





MISSION CITY



**BESS WAKEMAN**

+1 858 410 1245

bess.wakeman@jll.com

RE license #01177659

**TIM OLSON**

+1 858 410 1253

tim.olson@jll.com

RE license #01364117



[cioreit.com](http://cioreit.com)

Although information has been obtained from sources deemed reliable, neither Owner nor JLL makes any guarantees, warranties or representations, express or implied, as to the completeness or accuracy as to the information contained herein. Any projections, opinions, assumptions or estimates used are for example only. There may be differences between projected and actual results, and those differences may be material. The Property may be withdrawn without notice. Neither Owner nor JLL accepts any liability for any loss or damage suffered by any party resulting from reliance on this information. If the recipient of this information has signed a confidentiality agreement regarding this matter, this information is subject to the terms of that agreement. ©2022. Jones Lang LaSalle IP, Inc. All rights reserved. Jones Lang LaSalle Brokerage, Inc. RE lic. #01856260