



FOR LEASE

# POND ROAD PLAZA NORTH & SOUTH

ROUTE 9 & E. FREEHOLD ROAD • FREEHOLD, NJ

JOIN

# TRADER JOE'S

**fortunoff**  
backyard store

*Michaels*

**PETCO**

**STAPLES**

that was easy.™

**DSW**  
SHOE  
WAREHOUSE

EXCITING NEW TENANTS  
COMING SOON

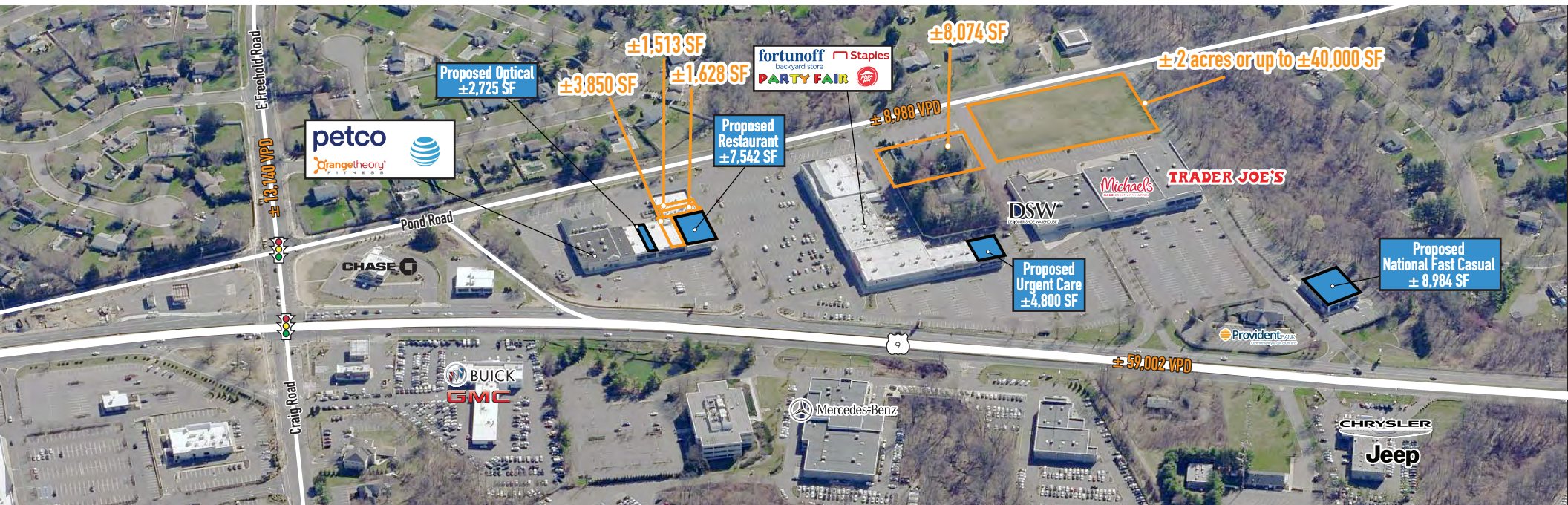
**CBRE**

# POND ROAD PLAZA

- Outstanding community shopping center
- GLA: ± 210,000 SF
- Convenient neighborhood and regional access; 8 curb cuts
- Great tenant mix including Trader Joe's, Petco, Staples, Michaels and DSW
- Excellent visibility to Route 9 with traffic counts exceeding 59,000 VPD
- ± 1,140 parking spaces
- Multiple pylon signs

2021 ESTIMATED	3 MILES	5 MILES	7 MILES
POPULATION	53,535	113,815	160,324
DAYTIME POPULATION	61,953	119,580	162,840
AVG HOUSEHOLD INCOME	\$148,228	\$162,458	\$164,756
MED HOUSEHOLD INCOME	\$110,993	\$120,236	\$121,831

## STRONG CO-TENANCY



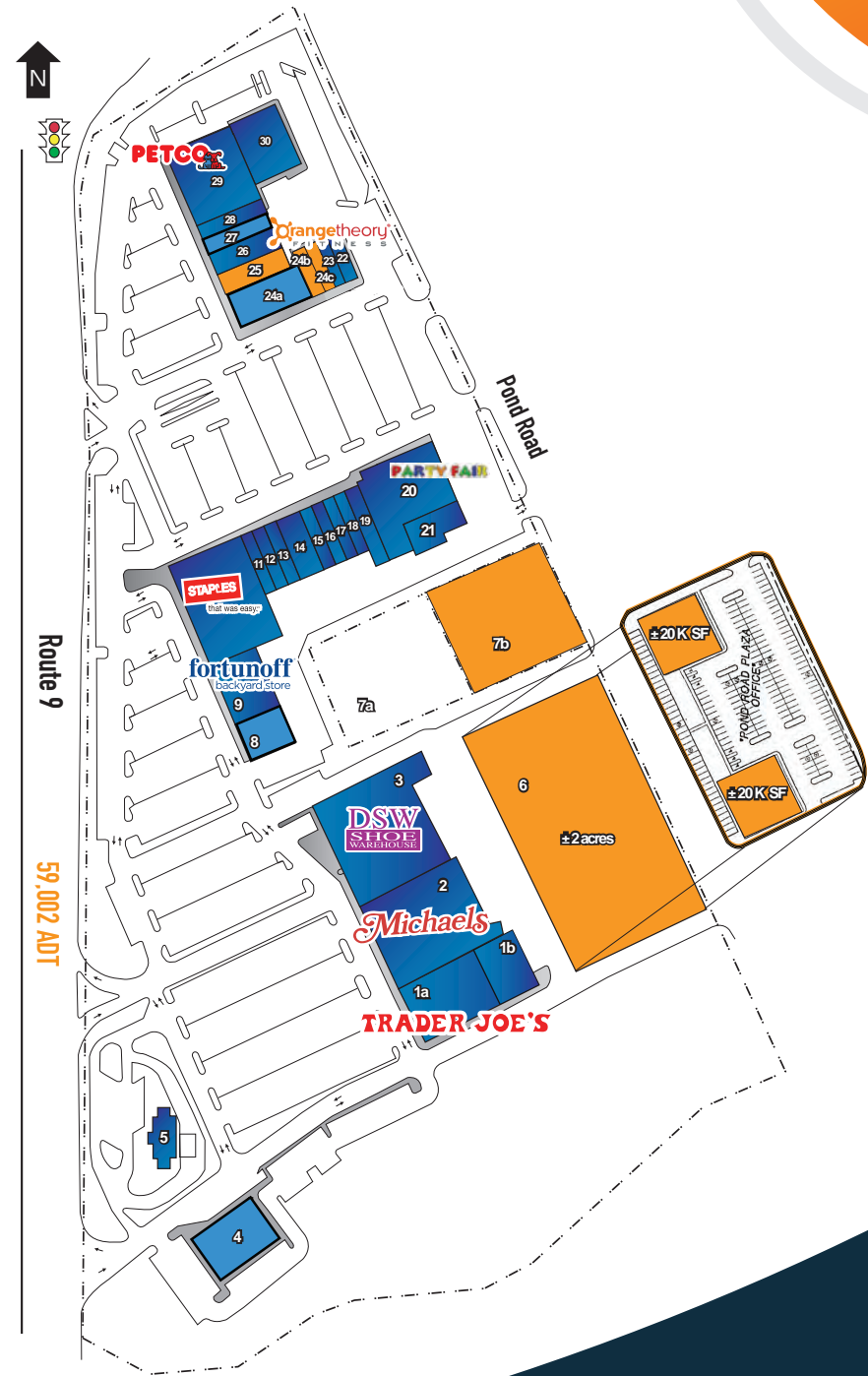
# MARKET AERIAL



# SITE PLAN

## TENANT LIST

1. a) Trader Joe's  
b) Hom
2. Michael's
3. DSW
4. ± 8,984 SF Proposed National Fast Casual
5. Provident Bank
6. ± 2 Acres Land or Up to ± 40,000 SF Available
7. a) Future Office Space  
b) ± 8,074 SF Available
8. ± 4,800 SF Proposed Urgent Care
9. Fortunoff Backyard Store
10. Staples
11. Attilios
12. Eli's Bagels
13. Nail Salon
14. Fred & Murray's Deli
15. Happy Feet
16. King's Chinese Restaurant
17. Bubbakoo's Burritos
18. Cleanbright Dry Cleaners
19. Act III Salon
20. Party Fair
21. Ideal Tile
22. Penny Pantry
23. Laundromat
24. a) ± 7,542 SF Proposed Restaurant  
b) ± 1,628 SF Available  
c) ± 1,513 SF Available  
± 3,141 SF Divisible
25. ± 3,850 SF Available
26. Orangetheory Fitness
27. ± 2,750 SF Proposed Optical



# EXCITING NEW TENANTS - COMING SOON

± 7,542 SF - PROPOSED RESTAURANT



± 8,984 SF - PROPOSED NATIONAL FOOD CASUAL



± 4,800 SF - PROPOSED URGENT CARE



± 2,750 SF - PROPOSED OPTICAL



**INLINE SPACE #24 B & C**  
 ± 3,141 SF - DIVISIBLE TO ± 1,628 SF AND ± 1,513 SF



02 PROPOSED FRONT ELEVATION  
 SCALE: 3/16" = 1'-0"

**INLINE SPACE #25**  
 ± 3,850 SF



# AVAILABLE LAND OR FUTURE OFFICE/MEDICAL #6

± 2 ACRES OR UP TO ± 40,000 SF



## CONTACT US

### **MICHAEL HORNE**

Senior Vice President

+1 732 509 2866 (O)

+1 732 208 6962 (M)

mike.horne@cbre.com

Licensed Broker/Salesperson: NJ

### **STEVEN WINTERS**

First Vice President

+1 732 509 2867 (O)

+1 732 768 9898 (M)

steven.winters@cbre.com

Licensed Broker/Salesperson: NJ

© 2022 CBRE, Inc. All rights reserved. This information has been obtained from sources believed reliable, but has not been verified for accuracy or completeness. You should conduct a careful, independent investigation of the property and verify all information. Any reliance on this information is solely at your own risk. CBRE and the CBRE logo are service marks of CBRE, Inc. All other marks displayed on this document are the property of their respective owners, and the use of such logos does not imply any affiliation with or endorsement of CBRE. Photos herein are the property of their respective owners. Use of these images without the express written consent of the owner is prohibited.

**CBRE**