

## SR-167 Industrial

25617 74th Ave S  
Kent, WA

±23,080 SF total

±3,500 SF office

Divisible to 17,500 & 13,750 SF

5 dock-high doors

2 grade-level doors

24' clear height

±120' truck court

Great exposure and access to  
SR-167

Heavy power

Available August 1, 2017

M-2 zoning (City of Kent)

Call for rates



### Location



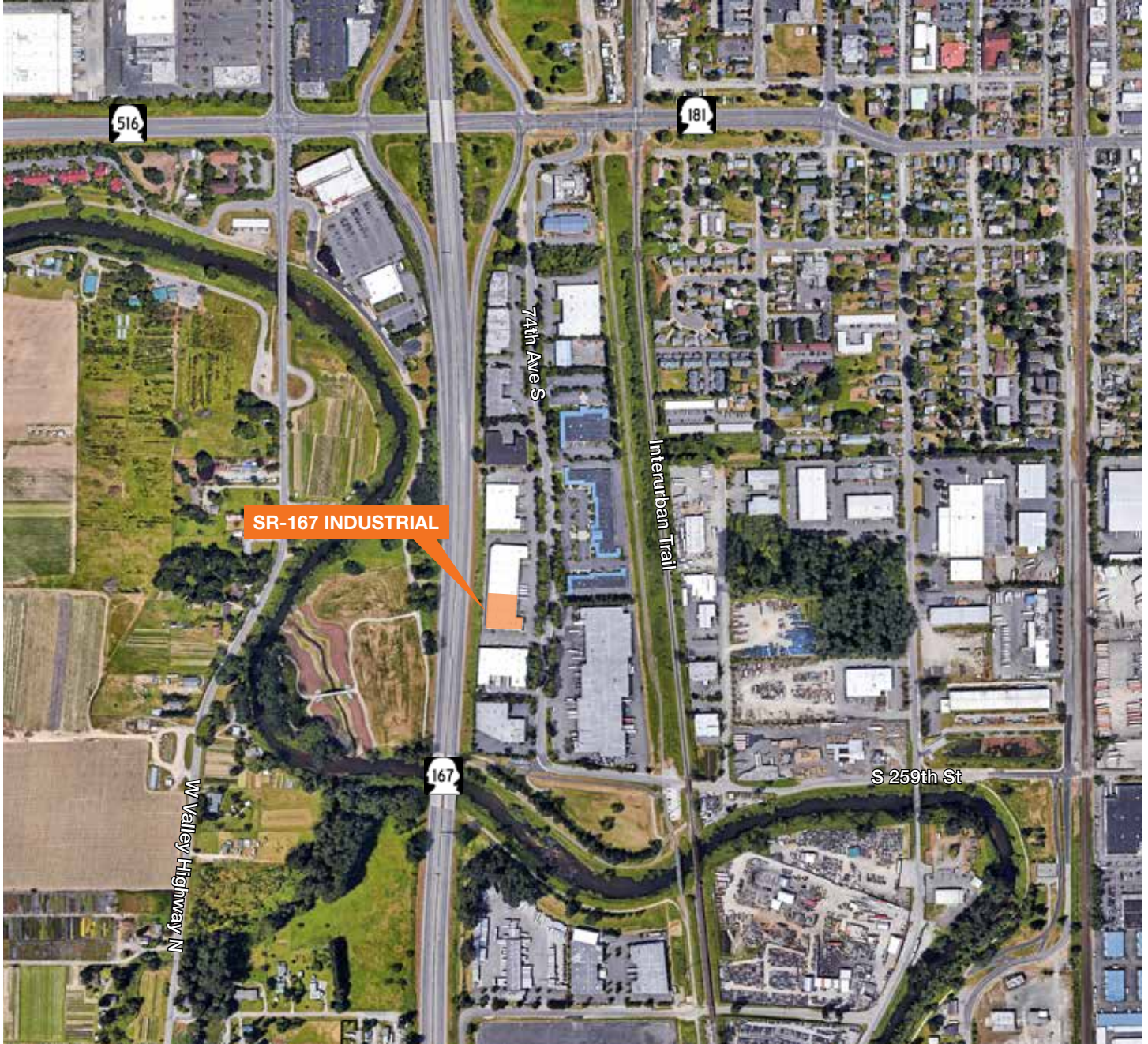
### Contact

**Peter Wooding**

206.248.7301

[pwooding@kiddermathews.com](mailto:pwooding@kiddermathews.com)

## SR-167 Industrial



### Contact

**Peter Wooding**  
206.248.7301  
pwooding@kiddermathews.com