



# 925 E. Main Street LEXINGTON, SC 29072

📍 SUBMARKET: LEXINGTON

## ±2.89 Acres Zoned General Commercial - Town of Lexington

Excellent location along major Lexington corridor; East Main Street

Retail/Commercial Development opportunity

SC DOT Traffic Count (2017): ± 27,400

Town of Lexington Water and Sewer along E. Main Street

±1.5 miles from I-20; ±1.3 miles from Columbia Avenue in Lexington

**SALE PRICE : \$525,000**



**FOR MORE INFO, CONTACT**

**NICK STOMSKI, SIOR** | Partner | [nstomski@trinity-partners.com](mailto:nstomski@trinity-partners.com) | 803-567-1447

**JAKE NIDIFFER** | Brokerage Associate | [jnidiffer@trinity-partners.com](mailto:jnidiffer@trinity-partners.com) | 803-567-1324



# 925 E. Main Street

LEXINGTON, SC 29072

 SUBMARKET: LEXINGTON

FOR SALE



## FOR MORE INFO, CONTACT

**NICK STOMSKI, SIOR** | Partner | [nstomski@trinity-partners.com](mailto:nstomski@trinity-partners.com) | 803-567-1447

**JAKE NIDIFFER** | Brokerage Associate | [jnidiffer@trinity-partners.com](mailto:jnidiffer@trinity-partners.com) | 803-567-1324

TRINITY PARTNERS | 1556 MAIN STREET, SUITE 200 COLUMBIA, SC 29201 | [TRINITY-PARTNERS.COM](http://TRINITY-PARTNERS.COM)

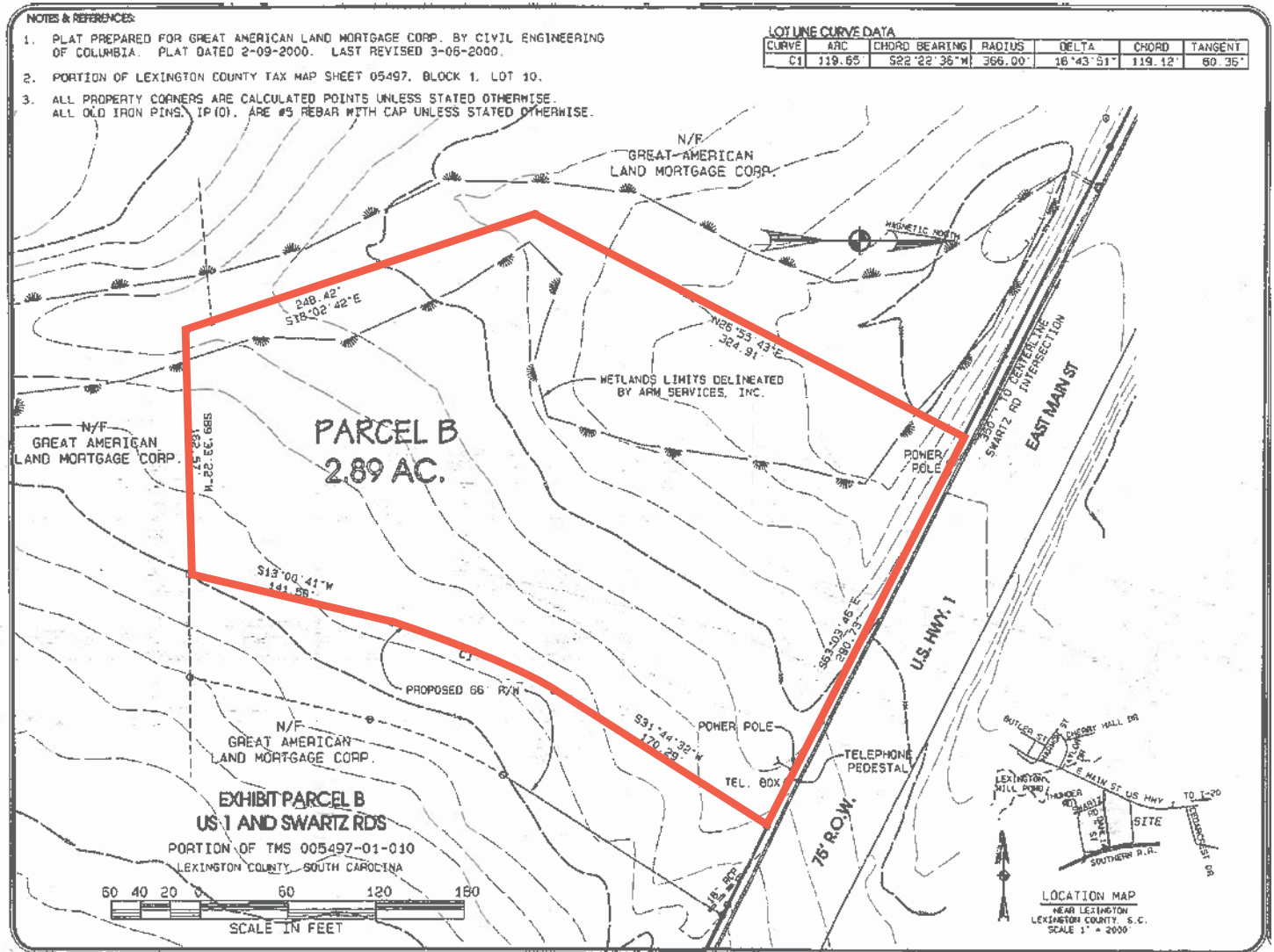
**TRINITY  
PARTNERS**

# 925 E. Main Street

LEXINGTON, SC 29072

📍 SUBMARKET: LEXINGTON

FOR SALE



FOR MORE INFO, CONTACT

NICK STOMSKI, SIOR | Partner | [nstomski@trinity-partners.com](mailto:nstomski@trinity-partners.com) | 803-567-1447

JAKE NIDIFFER | Brokerage Associate | [jnidiffer@trinity-partners.com](mailto:jnidiffer@trinity-partners.com) | 803-567-1324

TRINITY PARTNERS | 1556 MAIN STREET, SUITE 200 COLUMBIA, SC 29201 | [TRINITY-PARTNERS.COM](http://TRINITY-PARTNERS.COM)



# 925 E. Main Street

LEXINGTON, SC 29072

 SUBMARKET: LEXINGTON

FOR SALE

## DEMOGRAPHICS

Radius	1 Mile	3 Mile	5 Mile
<b>Population:</b>			
2023 Projection	6,479	39,746	86,953
2018 Estimate	6,058	37,103	81,105
2010 Census	5,459	33,019	71,770
Growth 2018-2023	6.95%	7.12%	7.21%
Growth 2010-2018	10.97%	12.37%	13.01%
2018 Population Hispanic Origin	295	1,369	3,604
<b>2018 Population by Race:</b>			
White	4,817	30,849	69,005
Black	895	4,389	8,054
Am. Indian & Alaskan	16	135	323
Asian	207	1,129	2,290
Hawaiian & Pacific Island	3	26	59
Other	122	576	1,373
<b>U.S. Armed Forces:</b>	<b>14</b>	<b>94</b>	<b>233</b>
<b>Households:</b>			
2023 Projection	2,673	15,458	33,420
2018 Estimate	2,503	14,427	31,170
2010 Census	2,273	12,828	27,589
Growth 2018 - 2023	6.79%	7.15%	7.22%
Growth 2010 - 2018	10.12%	12.46%	12.98%
Owner Occupied	1,284	10,469	24,163
Renter Occupied	1,219	3,959	7,007
<b>2018 Avg Household Income</b>	<b>\$75,192</b>	<b>\$84,461</b>	<b>\$87,910</b>
<b>2018 Med Household Income</b>	<b>\$58,668</b>	<b>\$66,487</b>	<b>\$70,168</b>
<b>2018 Households by Household Inc:</b>			
<\$25,000	549	2,249	4,322
\$25,000 - \$50,000	487	3,099	6,393
\$50,000 - \$75,000	529	2,757	5,912
\$75,000 - \$100,000	304	1,845	4,384
\$100,000 - \$125,000	267	1,806	3,844
\$125,000 - \$150,000	70	901	1,999
\$150,000 - \$200,000	199	1,023	2,677
\$200,000+	97	748	1,638

### FOR MORE INFO, CONTACT

**NICK STOMSKI, SIOR** | Partner | [nstomski@trinity-partners.com](mailto:nstomski@trinity-partners.com) | 803-567-1447

**JAKE NIDIFFER** | Brokerage Associate | [jnidiffer@trinity-partners.com](mailto:jnidiffer@trinity-partners.com) | 803-567-1324

**TRINITY**  
PARTNERS