

# El Mercado

CREC

Last Space Available

2400 - 2490 W. 60th St.  
Hialeah, FL 33016

## LOCATION

SWC of W. 60th St. & W. 24th Ave.

## TOTAL SQ. FT

96,041 SF

## TRAFFIC COUNTS

+ 27,000 vpd on SW 60th St.



Publix®

La Colonia  
MEDICAL CENTER

Payless  
SHOESOURCE

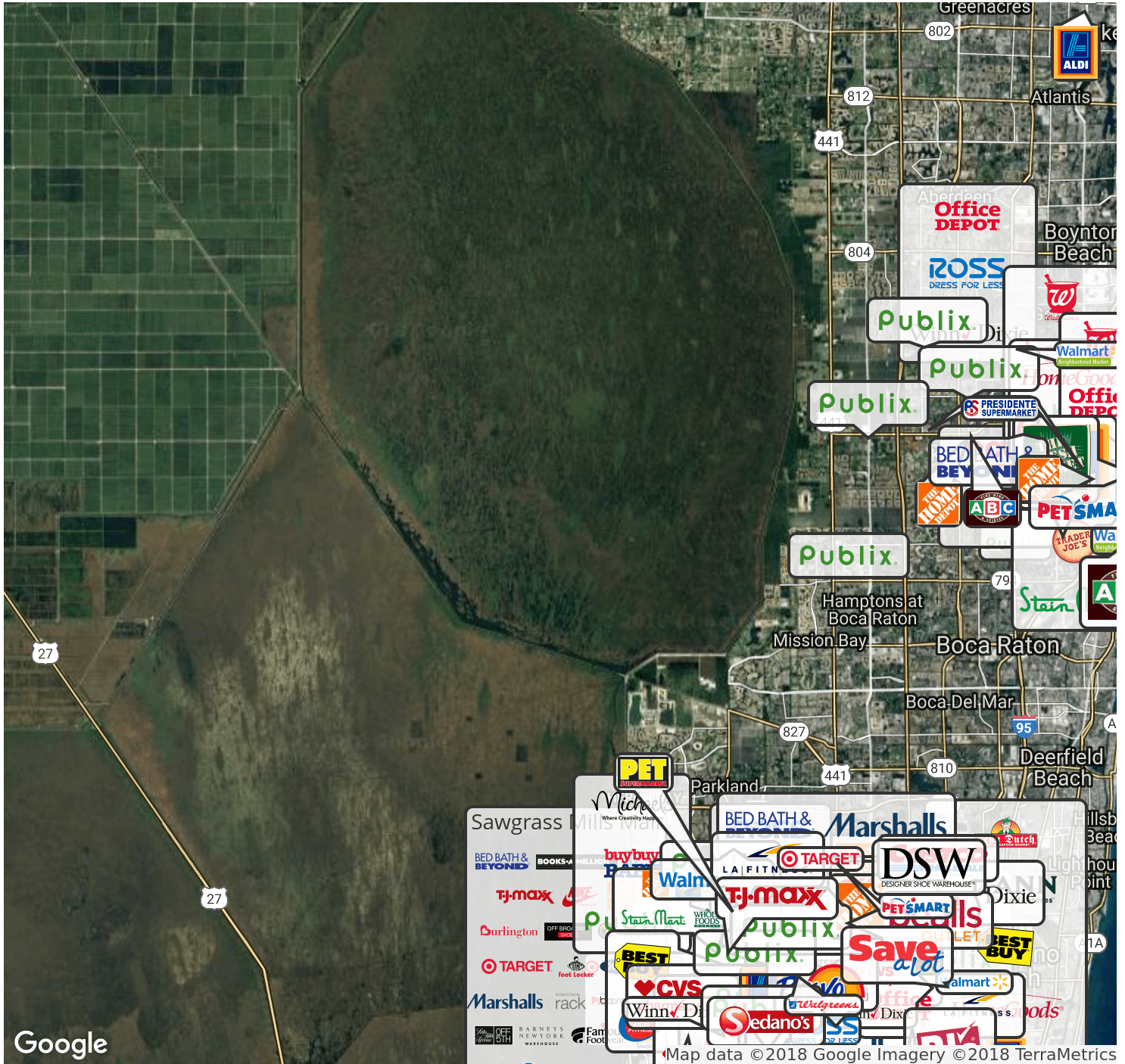
Pollo Tropical  
CHICKEN ON THE GRILL

## FEATURES

- Publix anchored shopping center located in the heart of the Hialeah submarket
- Excellent visibility and access from West 60th Street and West 24th Avenue
- Densely populated and vibrant trade area with a population of over 54,000 within 1 mile
- Average HHI exceeding \$86,000
- Strong daytime population of 119,000 within 3 miles

# Area Retailers

El Mercado



# Site Plan

## El Mercado



1-2	Suntrust	2,800 SF	20	Nails	800 SF	31	Gentlemen's Cutz Barber	800 SF
3	Little Caesars	1,200 SF	21	China Tokyo	1,160 SF	32	Jewelry	1,066 SF
4-5	Payless Shoes	3,200 SF	22	Travel Agency	940 SF	33	Bank of America	1,066 SF
6	Publix	42,112 SF	23	Golden Trust Insurance (Future)	900 SF	34-35	Banfield Pet Hospital	2,766 SF
7-10A	La Colonia	13,920 SF	24	Headquarters Unisex	900 SF	36	Oportun (Future)	800 SF
10-12	Daycare	3,396 SF	25-26	Mary's Dollar	2,300 SF	37	Crickit Wireless	1,066 SF
13	Dentist	784 SF	27-28	La Colonia	1,800 SF	38	Liquors	1,200 SF
14-18	US Post Office	5,245 SF	29	Fritanga Managua	1,000 SF	39	Pollo Tropical	2,800 SF
19	Fashion Store	800 SF	30	<b>AVAILABLE</b>	<b>1,220 SF</b>			

# Demographics

## El Mercado



POPULATION	1 MILE	3 MILES	5 MILES
Total population	51,021	188,108	376,430
Median age	39.0	40.4	39.4
Total households	16,557	61,019	123,445
Average HH income	\$42,299	\$49,199	\$53,874



### CONTACT

Ruben Suarez  
 Vice President  
 305.779.3188  
 rsuarez@crec.com

Ariel Bernstein  
 Vice President  
 305.779.3152  
 abernstein@crec.com

CREC  
 2121 Ponce de Leon Blvd.  
 Suite 1250  
 Coral Gables, FL 33134

305.854.7342  
 crec.com