



FARMERS

614

For Lease

Southeast Office Space

6140 28th St SE
Grand Rapids, MI 49546

For more information, contact:

Jason Makowski

616 575 7034 direct • jasonm@naiwwm.com

Mary Anne Wisinski-Rosely, SIOR, CCIM

616 575 7047 direct • mawr@naiwwm.com

100 Grandville Ave SW, Ste 100
Grand Rapids, MI 49503

Property Overview

More Than An Address

Two suite sizes and configurations available ranging from 1,449 sq ft to 3,128 sq ft.

Monument & Pylon signage along 28th St available.

Ample on-site parking.

Building is professionally managed.

Great location in Cascade Township.

Conveniently located within close proximity to I-96.

Call listing agent for additional details.



The Offering

Lease	\$12.75/SF
Lease Type	Gross
Availability	1,449—3,128 SF

The Building

Location I-96 to 28th St East Exit. Right (South) on Lucerne Dr; Property is 1st building on Left.

Total Building Size	31,008 SF
Construction	Brick
HVAC	Gas/Forced Air
Air Conditioning	100%
Signage	Monument & Pylon
Age	1981
Parking	On-site; 150+ spaces
Security System	No
Lot Size	Approximately 3 Acres
Zoning	PUD



Financial Overview

Lease Information

Terms	36 - 60 months
Tenant Provides	Janitorial & Phone
Municipality	Cascade Township
PPN	41-19-17-202-001
Renewal Option	Yes
Possession	At lease commencement

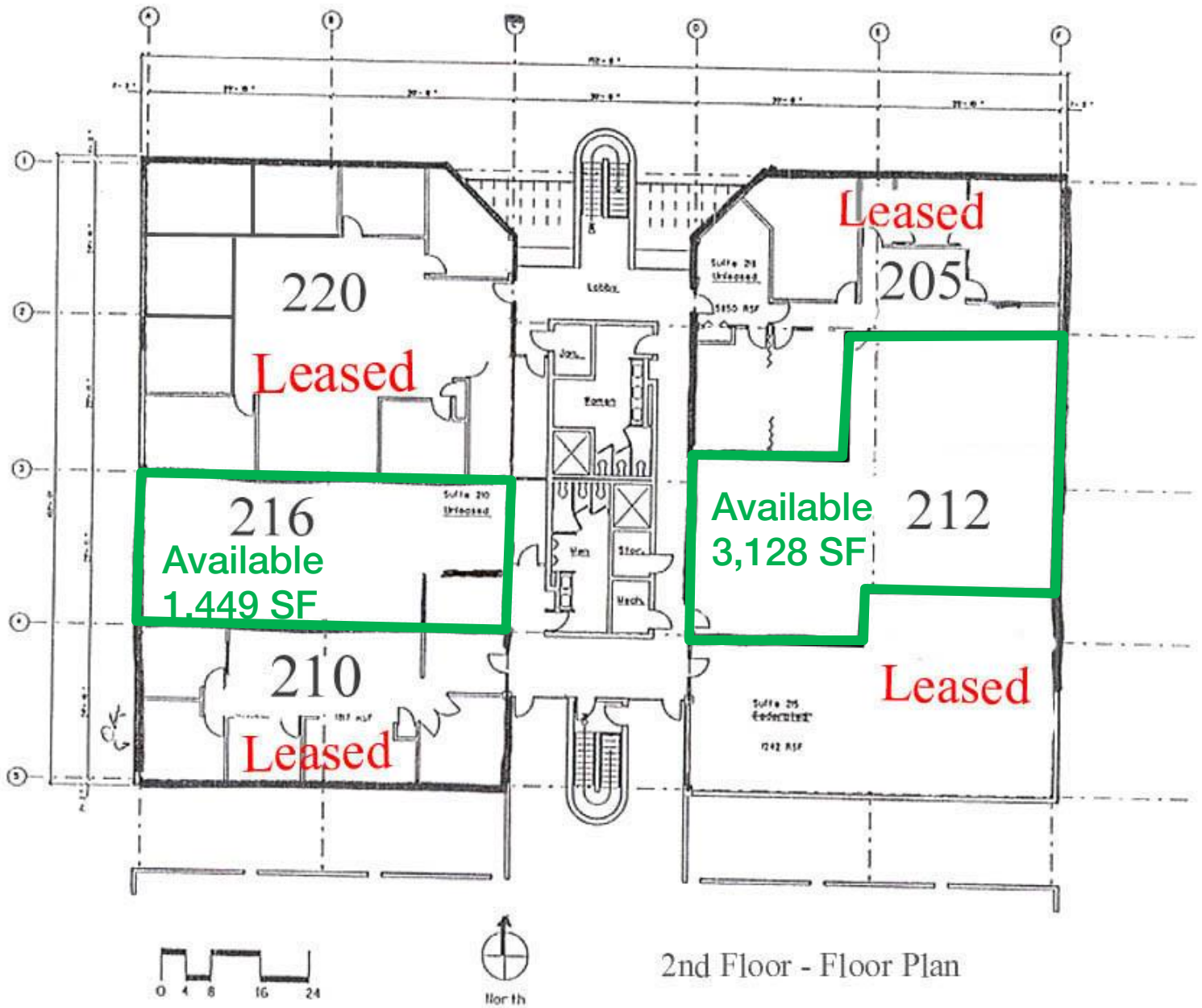
Availability

Suite	Floor	Rentable SF	Rate/SF/Yr	Monthly Rent
212	2	3,128 SF	\$12.75 PSF	\$3,323.50
216	2	1,449 SF	\$12.75 PSF	\$1,539.56

Property Photography



Floor Plans—Suites 212 & 216



Floor Plan—Suite 212

