

SHERWOOD COMMONS

17565 & 17625 SW HANDLEY ST | SHERWOOD | OR 97140



NEW CLASS A+ MEDICAL BUILDINGS



BARRINGTON
MANAGEMENT

DAVID EMAMI
503.557.3350
bm@barringtonpdx.com

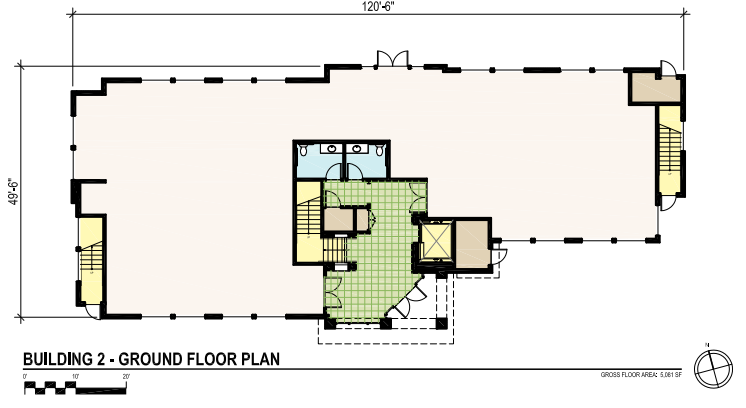
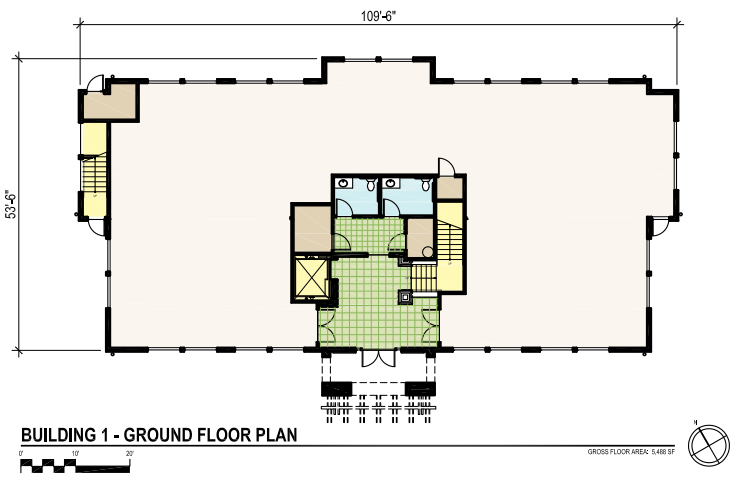
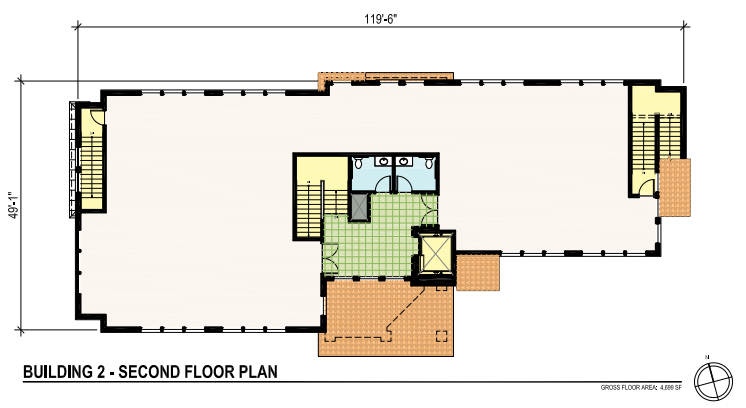
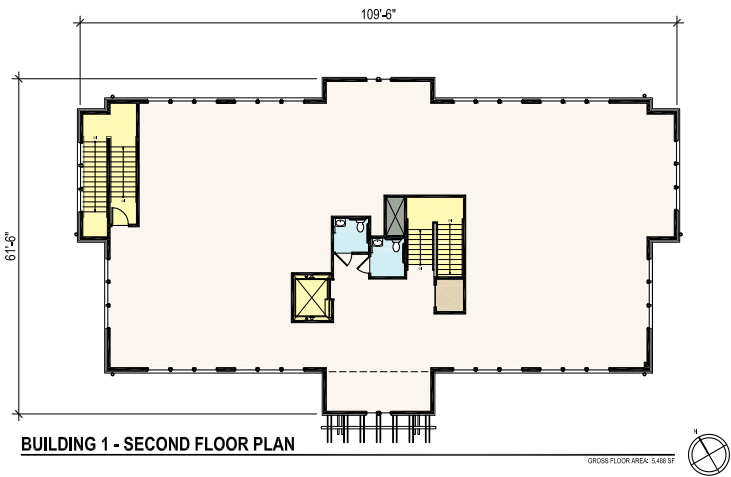
The information contained herein has been obtained from sources deemed reliable, however we do not guarantee its accuracy.



Two New Class A+ Medical Buildings

- 20,000 sq. ft. (10,000 each)
- Established medical area
- Rate \$20.00/sq. ft. NNN - as is
- Free on site parking - 5/1000
- Bike parking
- Elevator served
- Great signage opportunity
- 99-W frontage
- Bus line in front
- Intersection with a stop light
- Mitsubishi CITY MULTI HVAC system
- ADA compliant





SHERWOOD COMMONS

17565 & 17625 SW HANDLEY ST | SHERWOOD | OR 97140



Demographics

	1 mile	3 miles	5 miles
Total Population 2000	6,184	14,711	59,265
Total Population 2010	10,947	21,493	77,746
Avg. HH Income	91,726	89,781	89,041



DAVID EMAMI
 503.557.3350
 bm@barringtonpdx.com