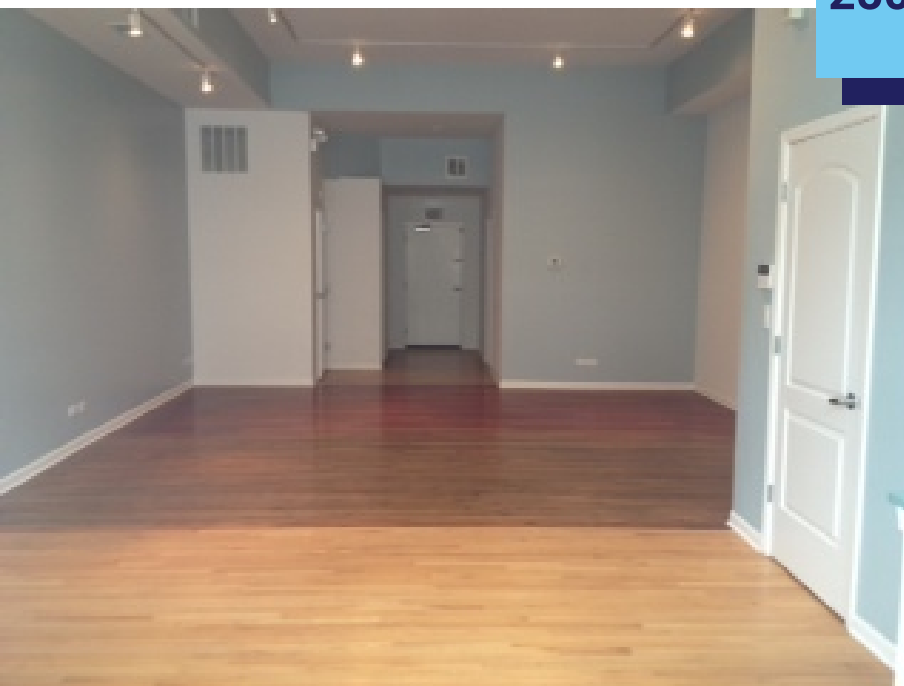




FOR SALE
LOGAN SQUARE
COMMERCIAL CONDO
2507 N Milwaukee Avenue, Unit C1
Chicago, IL 60647



HIGHLIGHTS

Property Type: Retail
Taxes: \$16,499.12 (2017)
PIN #(s): 13-25-315-066-0000
Size: 900 Sq Ft
Zoning: C2 - 2
Alderman: Waguespack

SNAPSHOT



- 1st floor commercial condo plus 1 garage parking space available in 4-story condominium building
- Building features beautiful brick exterior with large storefront windows
- Hardwood flooring throughout with tile entry
- Favorable C-zoning allows for a variety of uses
- Situated in high-visibility location with over 17,500 vehicles per day and a Walk Score of 96
- Local area tenants include Cafe Tola, Moxie Allure, Happy Place Liquors, The Owl, Daisies, and The Rocking Horse

TRANSIT



On CTA #56
Milwaukee Route



0.2 miles to CTA #74
Fullerton Route



0.3 miles to CTA
Logan Square
Blue Line Station

DEMOGRAPHICS



Population

1 Mile 62,109



Households

1 Mile 23,137



Avg Household Income

1 Mile \$80,688



Consumer Spending (000s)

1 Mile \$522,970

AREA MAP



TRAFFIC COUNT

N Milwaukee Ave 17,500