



Property Features

- +/- 18 acres of land zoned commercial in Halifax County
- Former Clayton Homes site
- 226' of linear road frontage along Philpott Rd
- Front portion of the property is a pad ready site with the balance of the property available for future development
- Ideally suited for modular home sales or used car sales
- Sales price \$495,000.00/\$27,500.00 per acre

Demographics

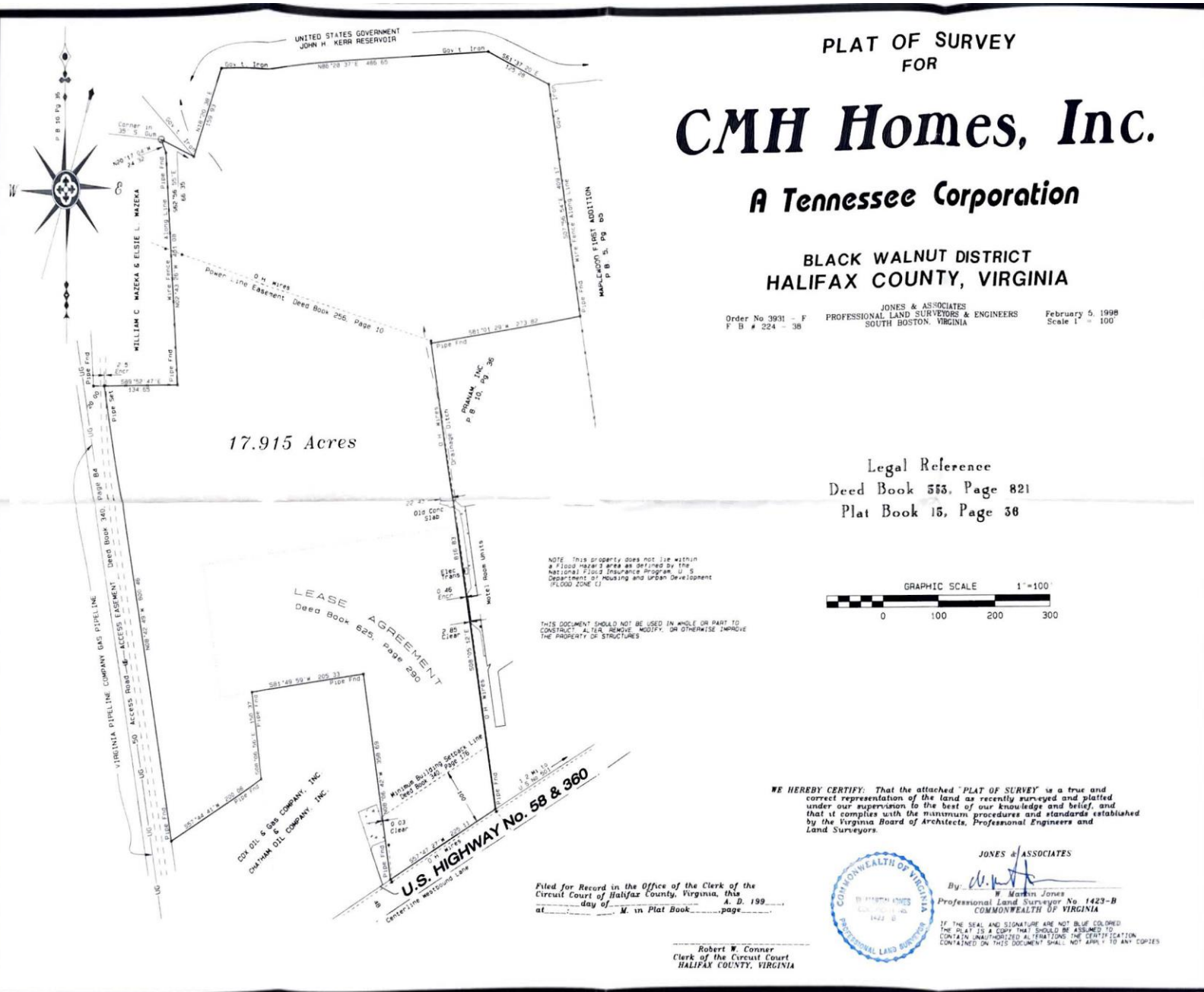
| | 1 Mile | 3 Miles | 5 Miles |
|--------------------|----------|----------|----------|
| Population | 296 | 7,166 | 12,969 |
| No. of Households | 130 | 3,055 | 5,393 |
| Avg. HH Income | \$62,728 | \$49,387 | \$51,769 |
| Daytime Population | 1,726 | 10,699 | 17,920 |

For more information, contact:

GEORGE LUPTON, CCIM
 Senior Associate
 434 455 2306
george.lupton@thalhimer.com

NORMAN MOON, SIOR, CRE, CCIM
 First Vice President
 434 455 2302
norman.moon@thalhimer.com

Coffee Crossing
 6000 Boonsboro Rd, Suite A
 Lynchburg, VA 24503
www.thalhimer.com



For more information, contact:

GEORGE LUPTON, CCIM
 Senior Associate
 434 455 2306
 george.lupton@thalhimer.com

NORMAN MOON, SIOR, CRE, CCIM
 First Vice President
 434 455 2302
 norman.moon@thalhimer.com

Coffee Crossing
 6000 Boonsboro Rd, Suite A
 Lynchburg, VA 24503
 www.thalhimer.com