

FOR SALE OR LEASE

Professional Office Building



104 & 108 Candlewood Court, Lynchburg, VA 24502
10,000 Sq. Ft. on 1.6 Acres

Property Information

SF

10,000 ±

Sale Price

\$1,050,000

Rental Rate

\$12.00/Sq. Ft./Year
 (3% annual increases)

Features

- Ample Office Space
- Climate Controlled Server Room
- City Water & Sewer
- Fiber Optic Internet
- Recessed Fluorescent Lighting
- ADA Accessibility
- (4) Restrooms
- 79 Marked Parking Spaces
- Central Heating/Air
- Single Phase Power
- Frame Construction w/ Brick Facing

Zoning

B-3

Ricky Read, CCIM

Cell: 434-841-3659

Main: 434-455-2285 ext. 101

ricky@realestatelynchburg.com

Rick Read

Direct: 434-455-3618

rread@realestatelynchburg.com

Luke Dykeman

Cell: 434-944-3920

Main: 434-455-2285 ext. 107

lukedykeman@realestatelynchburg.com

Property Features

This property features approximately 10,000 Sq. Ft. of Class A office space on 1.6 ± acres just off of the highly traveled (26,000 VPD) Timberlake Rd. at a Signalized Intersection. Ample parking and easy access to a major east/west four lane highway. This property is located in the heart of the Timberlake retail and dining district with plentiful restaurants and attractions within several minutes driving distance. Two additional .6 acre parcels are available for extra parking, expansion, or separate development.

WWW.CBCREAD.COM

©2017 Coldwell Banker Real Estate LLC, dba Coldwell Banker Commercial Affiliates. All Rights Reserved. Coldwell Banker Real Estate LLC, dba Coldwell Banker Commercial Affiliates fully supports the principles of the Equal Opportunity Act. Each Office is Independently Owned and Operated. Coldwell Banker Commercial and the Coldwell Banker Commercial Logo are registered service marks owned by Coldwell Banker Real Estate LLC, dba Coldwell Banker Commercial Affiliates.

Coldwell Banker Commercial
 Read & Co., Realtors
 101 Annjo Court, Forest, VA 24551
 434-455-2285

Professional Office Building & Commercial Lots - Area View

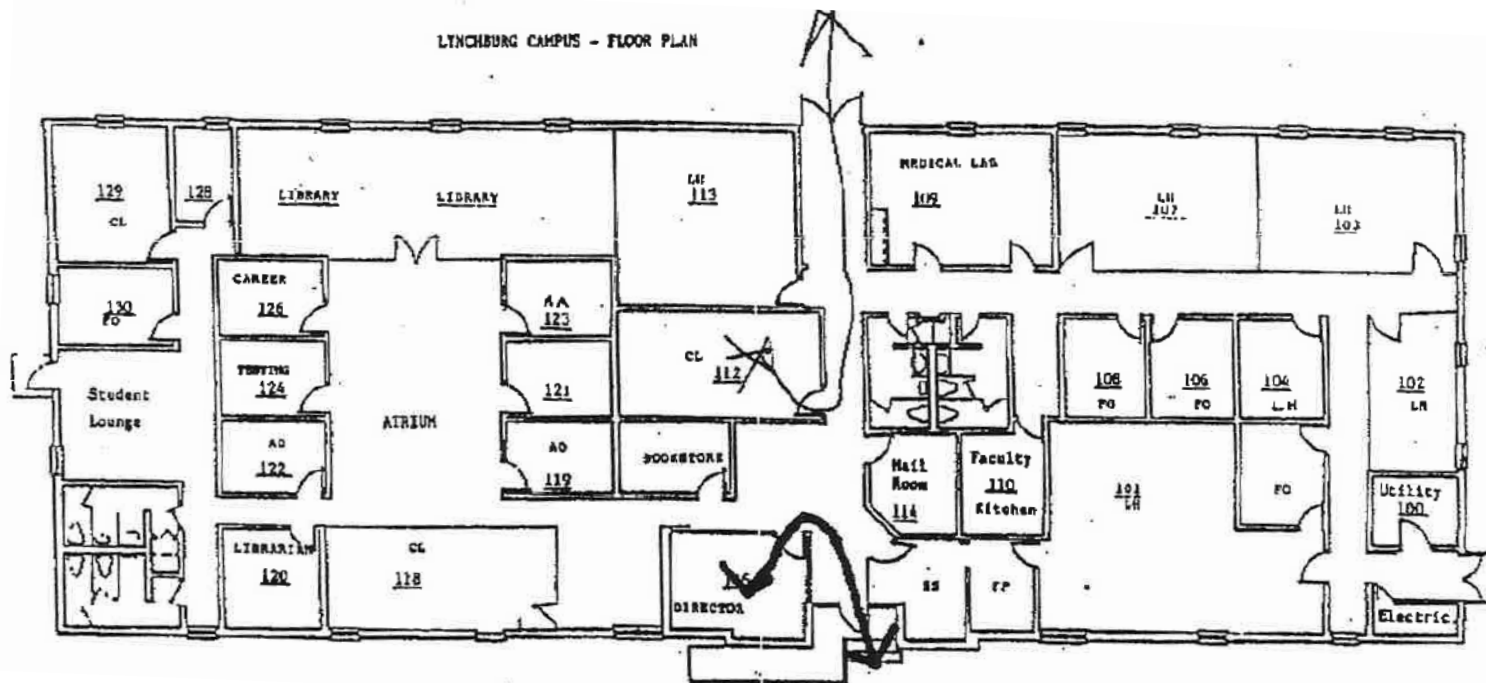


Professional Office Building & Commercial Lots

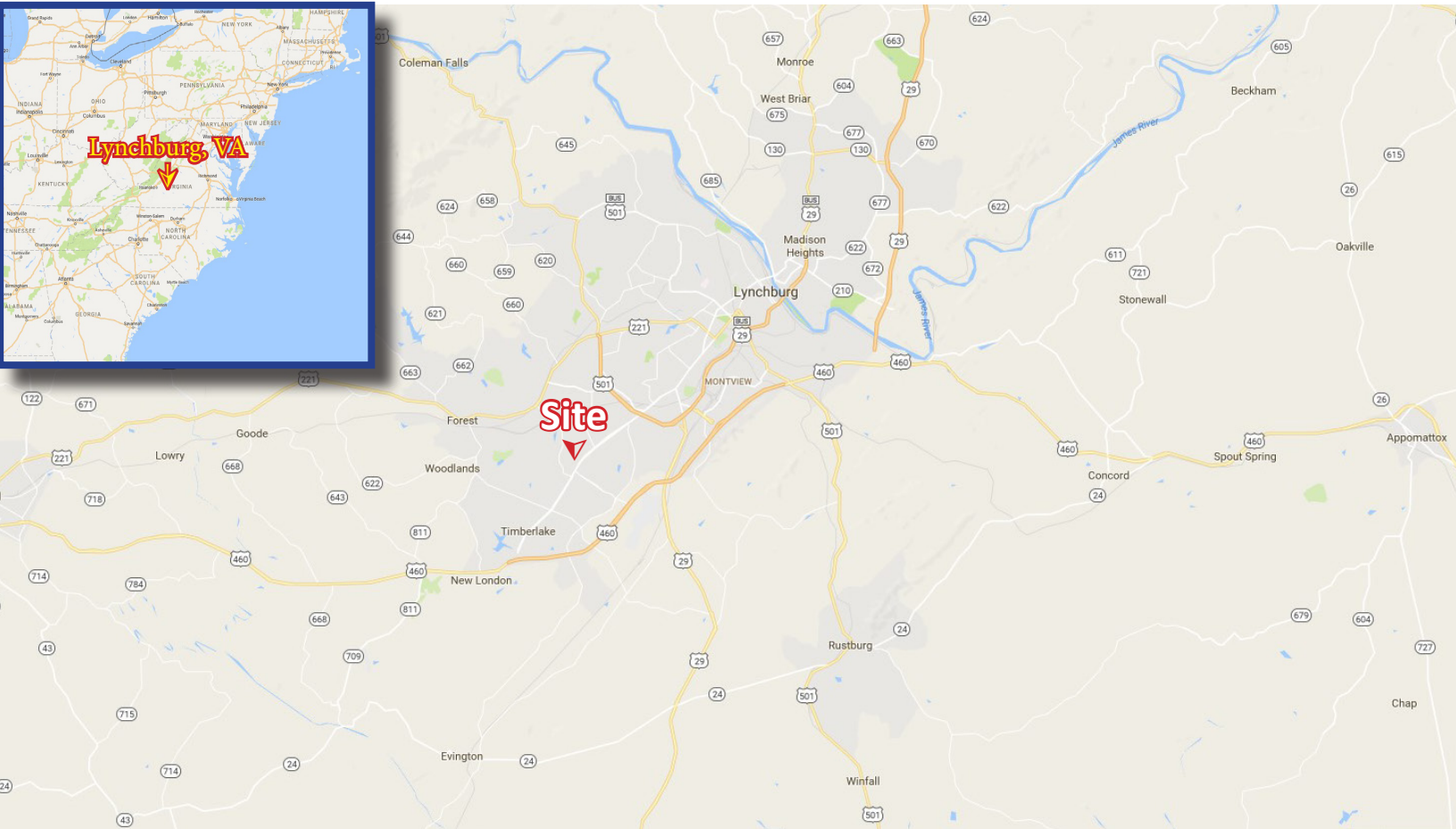


Professional Office Building & Commercial Lots - Floorplan

LYNCHBURG CAMPUS - FLOOR PLAN



Location Map



For more information, please contact:

Rick Read, Broker
 COLDWELL BANKER COMMERCIAL
 Read & Co., Realtors
 101 Annjo Court
 Forest, VA 24551

Phone: (434) 455-3618
 Fax: (434) 847-7746
 Mobile: (434) 841-1642
rread@realestatelynchburg.com

Ricky Read, CCIM
 COLDWELL BANKER COMMERCIAL
 Read & Co., Realtors
 101 Annjo Court
 Forest, VA 24551

Phone: (434) 455-2285 ext. 101
 Fax: (434) 847-7746
 Mobile: (434) 841-3659
ricky@realestatelynchburg.com

Luke Dykeman
 COLDWELL BANKER COMMERCIAL
 Read & Co., Realtors
 101 Annjo Court
 Forest, VA 24551

Phone: (434) 455-2285 ext. 107
 Fax: (434) 847-7746
 Mobile: (434) 944-3920
lukedykeman@realestatelynchburg.com