

Centre Point West

Great Location Along I-88

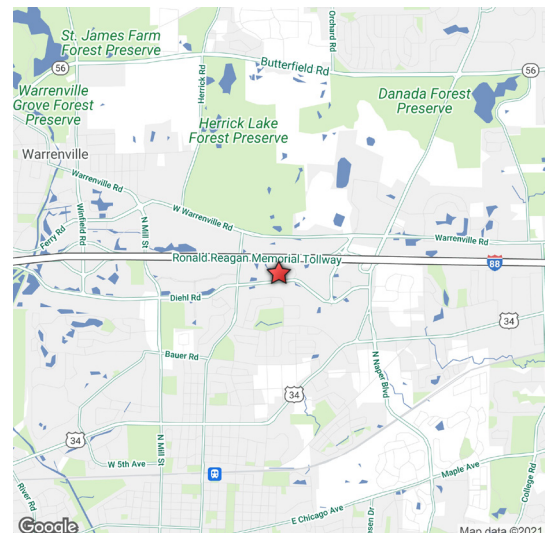
1804-1832 Centre Point Circle
Naperville, Illinois

Single-Story Office/Tech Space with Loading



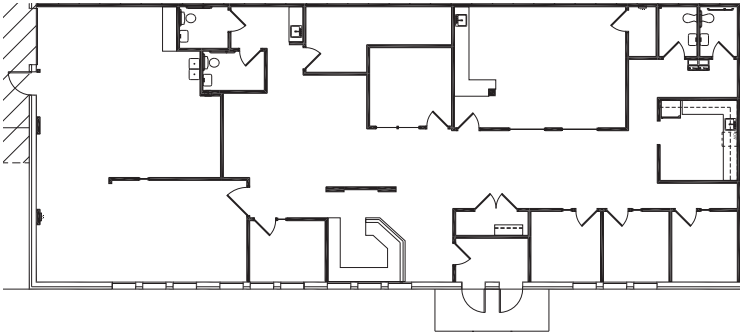
Property

- + Available Square Feet:
 - **1804 Centre Point - Suite 106 - 4,441 SF (furnished, move-in condition)**
 - **1832 Centre Point - Suite 100 - 14,337 SF (divisible)**
 - **1832 Centre Point - Suite 104 - 4,372 SF (former medical suite)**
- + Rental Rate - \$12.50 PSF Net
- + 2022 Est. Taxes - \$2.08 PSF
- + 2022 Est. Oper. Expenses - \$2.51 PSF
- + Excellent area amenities
- + Individual suites with separate entries and washrooms
- + No shared common areas
- + Access to both dock and drive-in door loading
- + Recent property upgrades

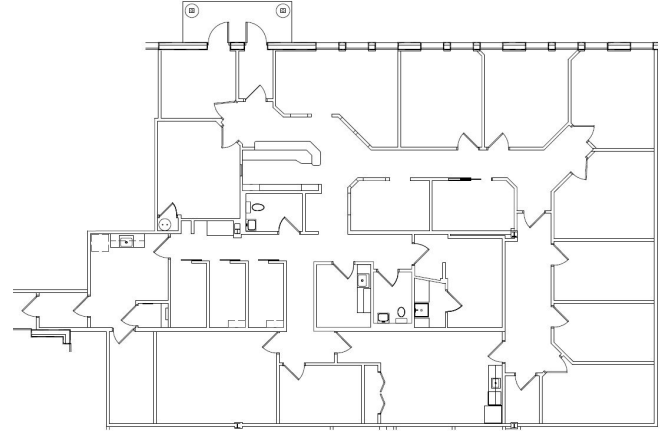


Floor Plans

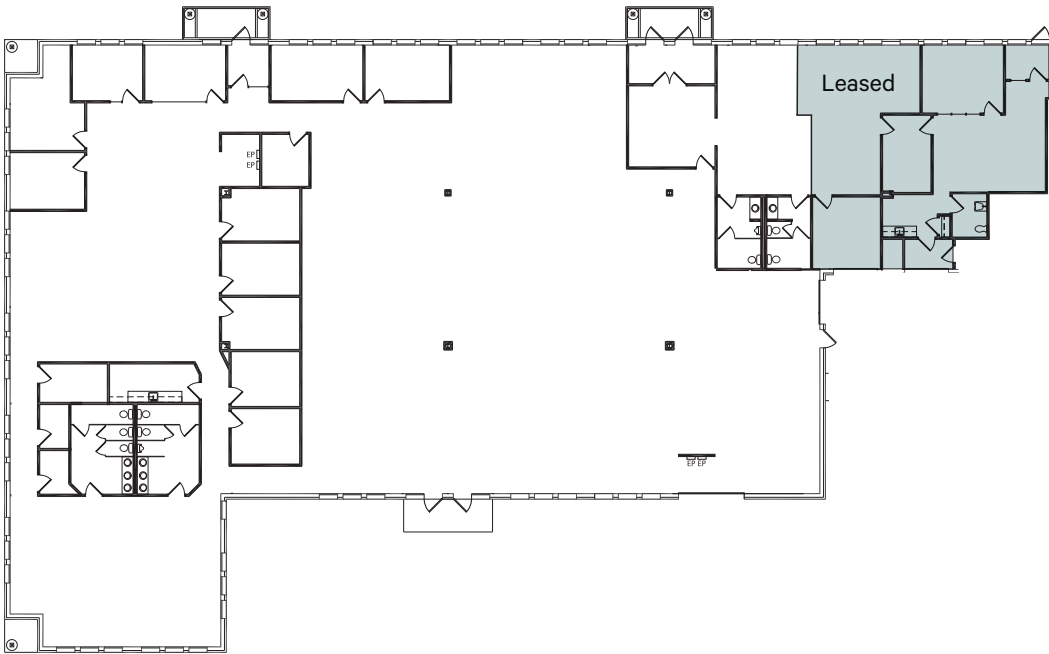
4,441 SF - 1804 Centre Point, Suite 106
(furnished, move-in condition)



4,372 SF - 1832 Centre Point, Suite 104
(former medical suite)



14,337 SF - 1832 Centre Point, Suite 100 (divisible)



Contact Us

David Justh

Executive Vice President
+1 630 573 1273
david.justh@cbre.com

Jeff Mann

Senior Vice President
+1 630 573 7076
jeffrey.mann@cbre.com

© 2022 CBRE, Inc. All rights reserved. This information has been obtained from sources believed reliable, but has not been verified for accuracy or completeness. You should conduct a careful, independent investigation of the property and verify all information. Any reliance on this information is solely at your own risk. CBRE and the CBRE logo are service marks of CBRE, Inc. All other marks displayed on this document are the property of their respective owners, and the use of such logos does not imply any affiliation with or endorsement of CBRE. Photos herein are the property of their respective owners. Use of these images without the express written consent of the owner is prohibited.