

# 330 SHAWNEE ST

LEAVENWORTH, KS 66048



## HIGHLIGHTS

- » 5,779 SF of Office Space Available
- » ADA Accessible
- » Elevator Access
- » 2 Hour Street Parking Available
- » Janitorial Services Provided
- » Landlord Responsible for Utilities (Except Phone)

## FOR LEASE

\$13.00/SF Full Service

## DEMOGRAPHICS

	1 Mile	3 Mile	5 Mile
2017 POPULATION	6,646	33,351	43,158
2017 MED HOUSEHOLD INCOME	\$29,973	\$49,785	\$53,940

### Miguel Jaramillo

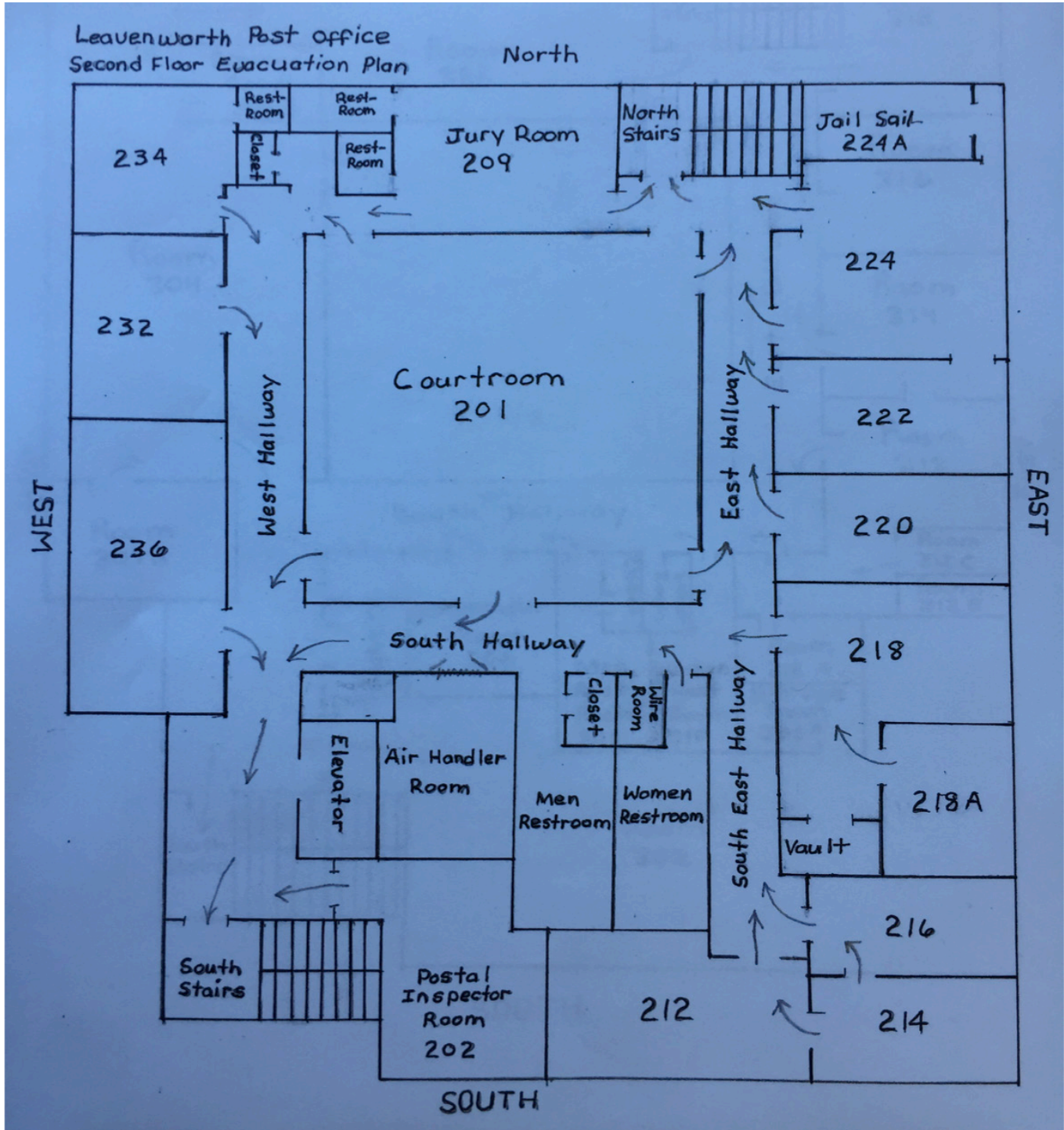
Office: 913.945.3781

Mobile: 816.585.1619

Email: [mj@reececommercial.com](mailto:mj@reececommercial.com)

# FLOOR PLANS

330 SHAWNEE ST, LEAVENWORTH, KS 66048



**Miguel Jaramillo**

Office: 913.945.3781

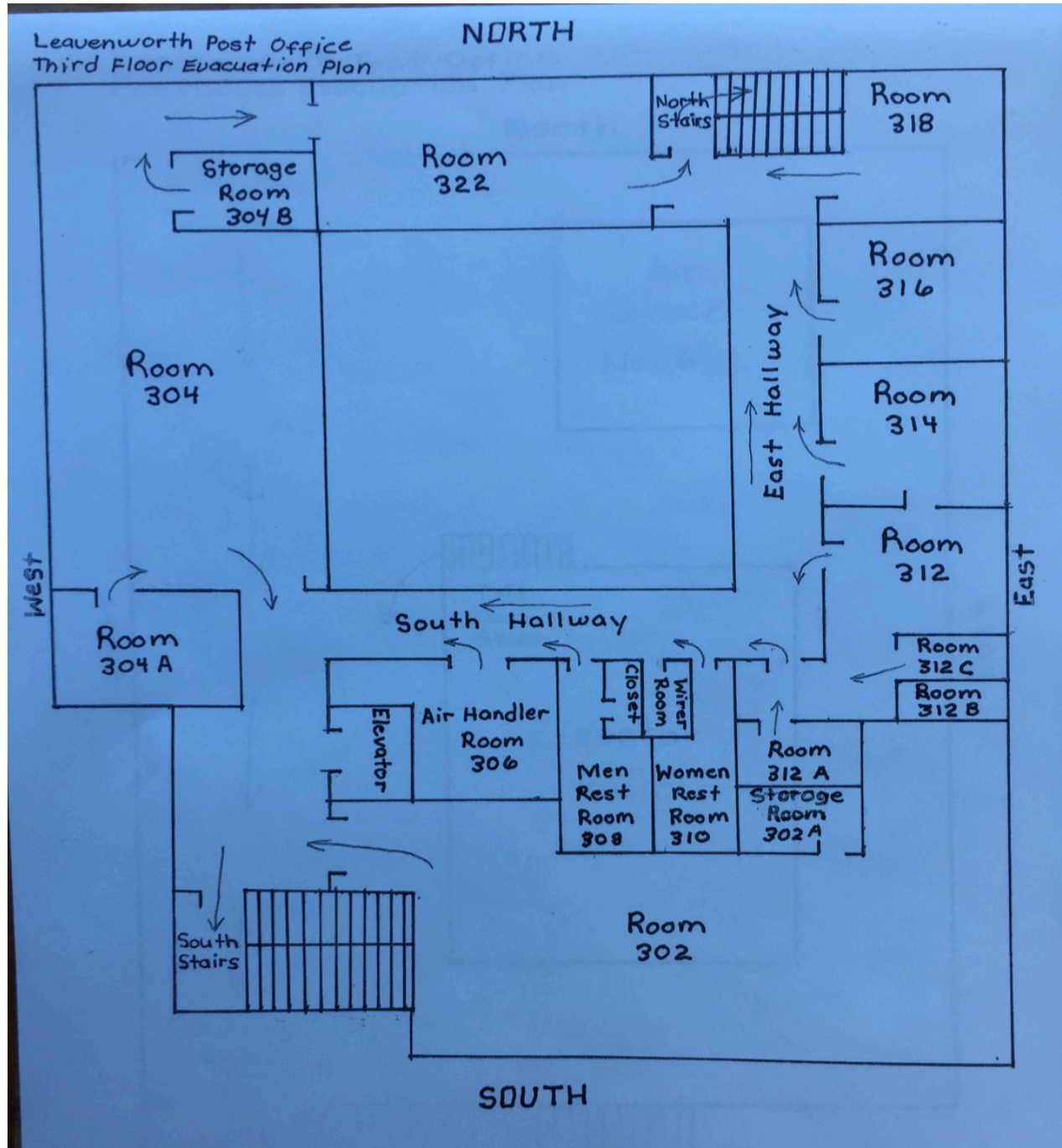
Mobile: 816.585.1619

Email: [mj@reececommercial.com](mailto:mj@reececommercial.com)



# FLOOR PLANS

330 SHAWNEE ST, LEAVENWORTH, KS 66048



**Miguel Jaramillo**

Office: 913.945.3781

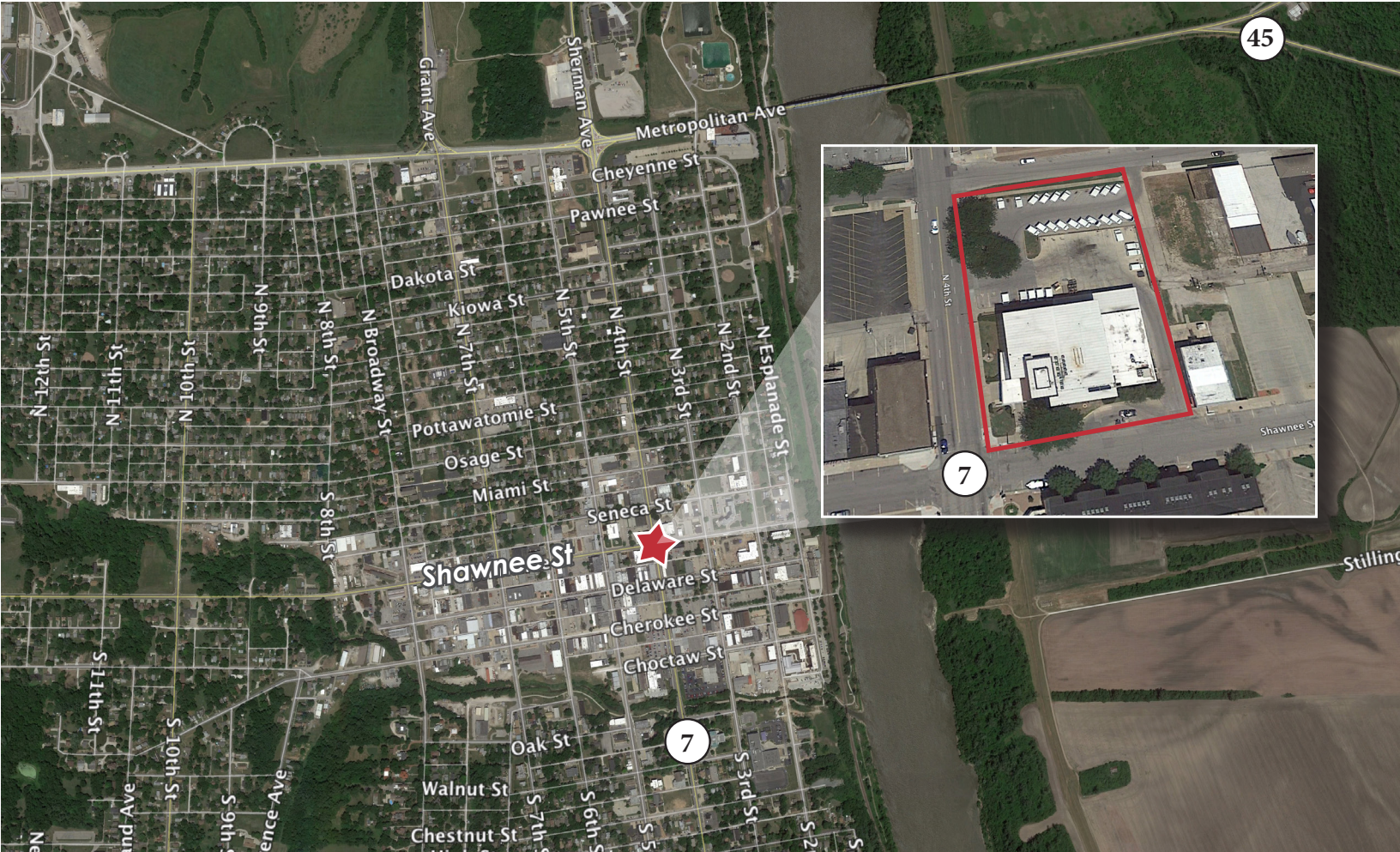
Mobile: 816.585.1619

Email: [mj@reeccommercial.com](mailto:mj@reeccommercial.com)



# 330 SHAWNEE ST

LEAVENWORTH, KS 66048



## Miguel Jaramillo

Office: 913.945.3781

Mobile: 816.585.1619

Email: [mj@reececommercial.com](mailto:mj@reececommercial.com)

The information above has been obtained from sources believed reliable. While we do not doubt its accuracy we have not verified it and make no guarantee, warranty or representation about it. It is your responsibility to independently confirm its accuracy and completeness. Any projections, opinions, assumptions, or estimates used are for example only and do not represent the current or future performance of the property. You and your advisors should conduct a careful, independent investigation of the property to determine to your satisfaction the suitability of the property for your needs. © 2018