

For SUBLEASE – Beverly Hills

450 N. Roxbury Drive

3,500 – 4,500 RSF 4th Floor Medical and Office

450 N. Roxbury Drive
Beverly Hills, CA 90210



COREY I. SPOUND Lic # 01142655

[E] corey@tamarackres.com

[P] (818) 464-3215

[A] 15300 Ventura Boulevard, Suite 200 | Sherman Oaks, CA 91403



Property Features

450 N. Roxbury Drive, 4th Floor
Beverly Hills, CA 90210



Address: 450 N. Roxbury Drive, 4th Floor
Beverly Hills, CA 90210

Sublease SF: 4th Floor: approx. 3,500 - 4,500 RSF

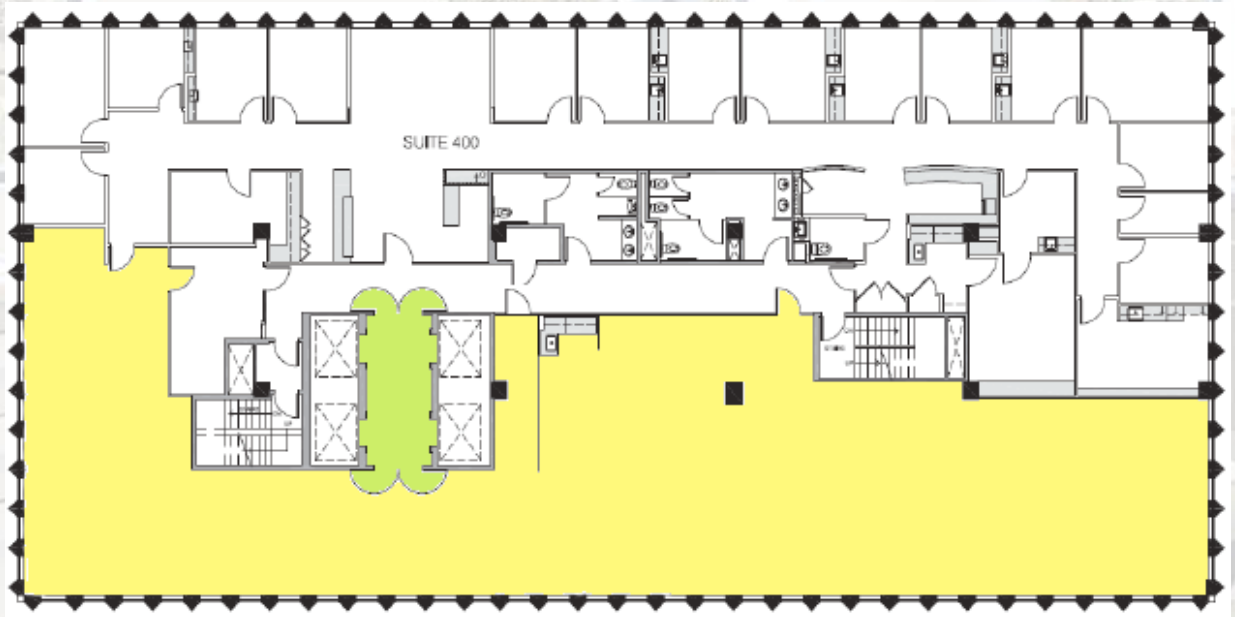
Rental Rate: \$6.50 / SF / month FSG

Space Use: Medical Office

Term: Through August 2025 (or extension)

Parking: 4:1,000

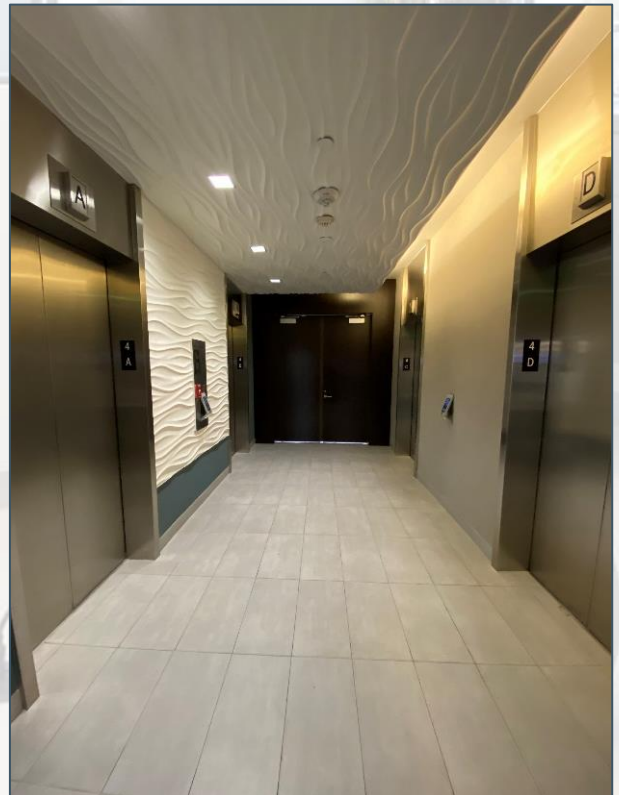
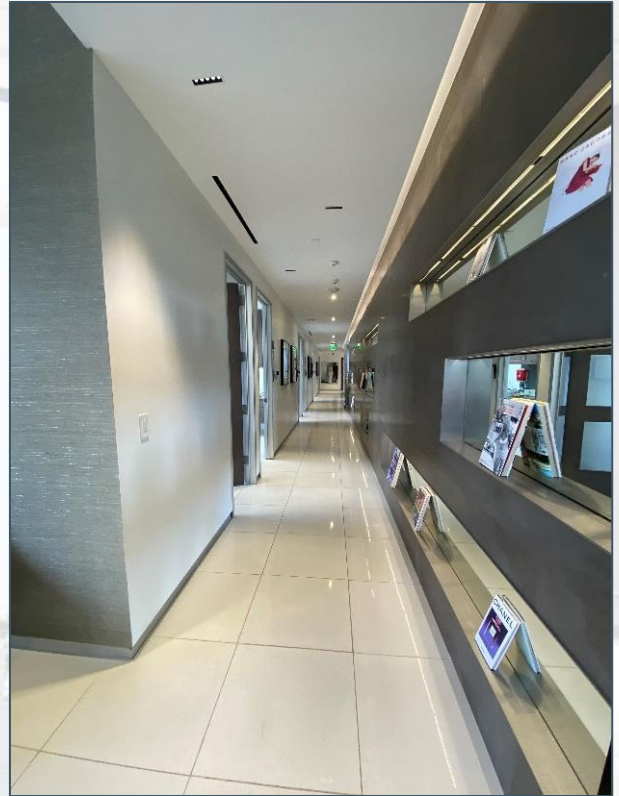
Walk Score 88	Very Walkable Most errands can be accomplished on foot.
Transit Score 67	Good Transit Many nearby public transportation options.
Bike Score 53	Bikeable Some bike infrastructure.



Brand New Build-Out for High-End Medical / Office User
(Currently in Warm Shell Condition)

Photos

450 N. Roxbury Drive, 4th Floor
Beverly Hills, CA 90210



* Photos are of the remaining floor space and are representative of what the subject sublease space could look like.

Photos

450 N. Roxbury Drive, 4th Floor
Beverly Hills, CA 90210



* Photos are of the remaining floor space and are representative of what the subject sublease space could look like.

Photos

450 N. Roxbury Drive, 4th Floor
Beverly Hills, CA 90210



* Photos are of the remaining floor space and are representative of what the subject sublease space could look like.