

**FOR
SALE**

PYN EASTSIDE LAND #1

Maple Street & Six-Mile Road

116.96 ACRES FOR SALE



1901 N. Six Mile Road
Sioux Falls, SD 57110



size

116.96 acres



price

\$15,000/acre



development

Site is reflected in City's 2040 Development Plan.



location

Great eastside location within 1/4 mile of Highway 100.



housing

Site has three (3) housing eligibilities.



conditions

Currently on site:

- House
- Barn
- Four (4) Farm sheds

Information deemed reliable but not guaranteed.



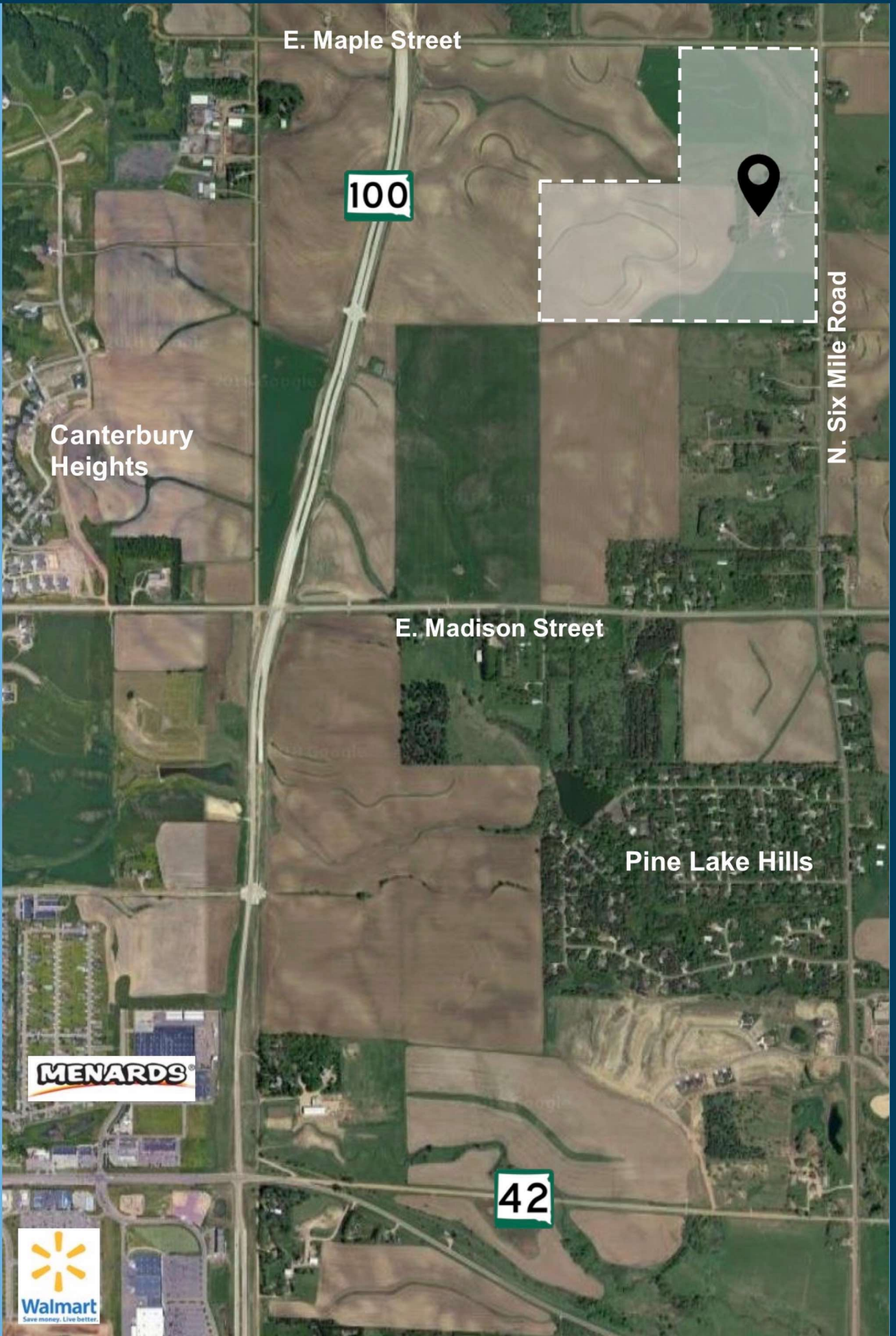
2571 S. Westlake Drive | Suite 100
Sioux Falls, South Dakota 57106
VBCLINK.com | 605.361.8211



605.376.0127

Ryan.Tysdal@VBCLINK.com

AERIAL MAP



E. Maple Street

100

Canterbury Heights

E. Madison Street

Pine Lake Hills

MENARDS



42

N. Six Mile Road