

# Center of Commerce - Bldg 910

3061-3063 Mercy Drive

Orlando, FL 32808

FOR LEASE



## Features:

- ◆ Total Size: 59,080 SF
- ◆ Availability:

Suite	Size	Office	OH Doors
B	12,129	812	5 Dock 2 Grade Level
- ◆ Ceiling Height: 20'
- ◆ Column Spacing: 42'W x 35'D
- ◆ Building Depth: 140'
- ◆ Constuction: Concrete Tilt Wall
- ◆ Truck Court: 100' including a 50' concrete apron
- ◆ Fire Protection: 0.44 gpm/2,000 SF
- ◆ Parking: 2/1,000



## Financial Information:

- ◆ Base Rent: \$6.50 psf NNN
- ◆ Operating Expenses: \$2.39 psf



4700 Millenia Blvd  
Suite 200  
Orlando, FL 32839  
321.281.8500 phone  
321.281.8519 fax  
www.lee-associates.com

**Tom McFadden, SIOR**

321.281.8501

tmcfadden@lee-associates.com

**William "Bo" Bradford, CCIM, SIOR**

321.281.8502

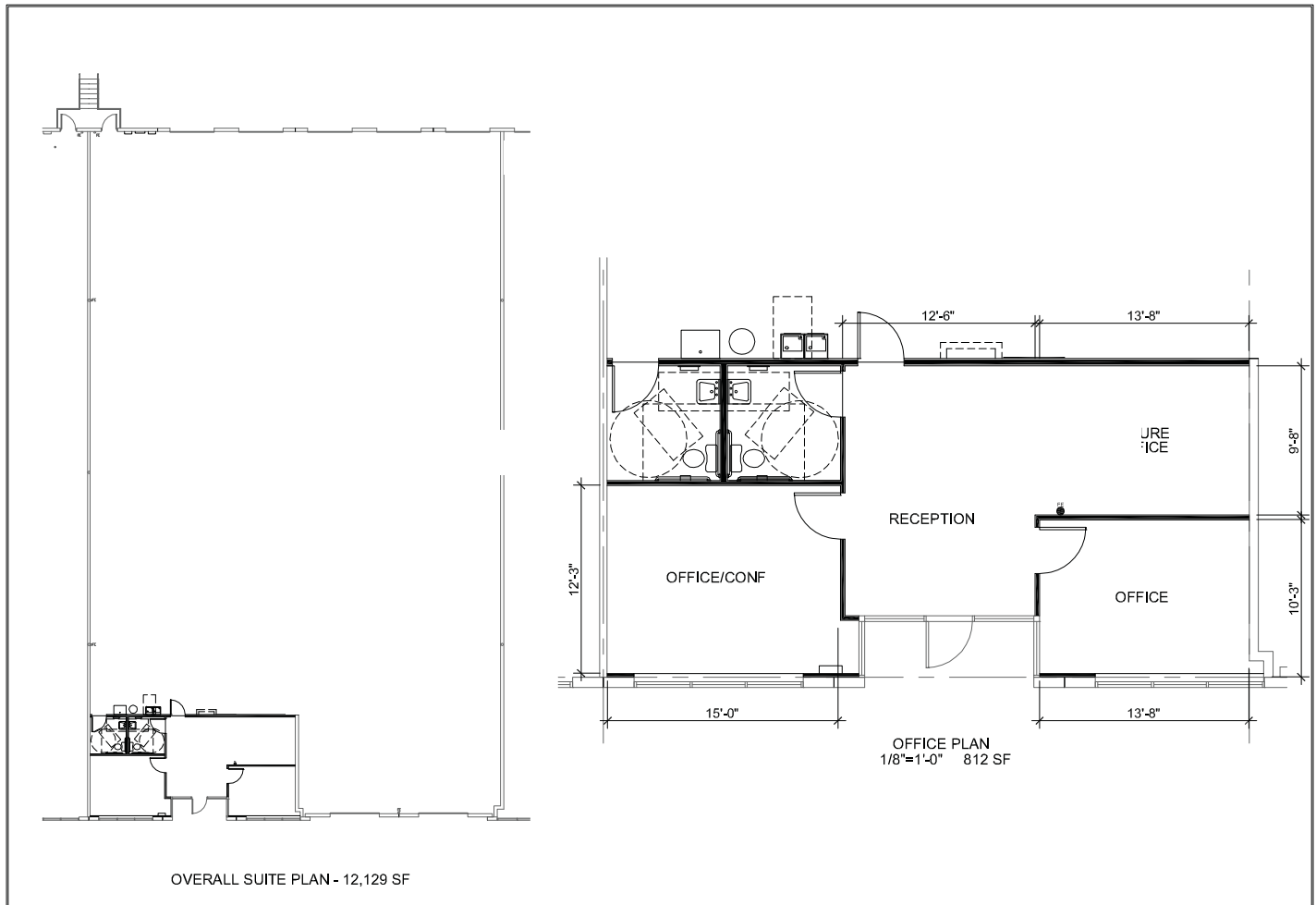
bbradford@lee-associates.com

# Center of Commerce - Bldg 910

3061-3063 Mercy Drive

Orlando, FL 32808

FOR LEASE



## transportation:

- ◆ Lee Road
- ◆ Orange Blossom Trail
- ◆ Interstate 4
- ◆ SR 408 (East/West Expressway)



4700 Millenia Blvd  
Suite 200  
Orlando, FL 32839  
ph: 321.281.8500 fx: 321.281.8519  
www.lee-associates.com

**Tom McFadden, SIOR**

321.281.8501

tmcfadden@lee-associates.com

**William "Bo" Bradford, CCIM, SIOR**

321.281.8502

bbradford@lee-associates.com

All information furnished regarding property for sale, rental or financing is from sources deemed reliable, but no warranty or representation is made to the accuracy thereof and same is submitted to errors, omissions, change of price, rental or other conditions prior to sale, lease or financing or withdrawal without notice. No liability of any kind is to be imposed on the broker herein.