



FLEX SPACE FOR LEASE

**10302 S DOLFIELD RD**

OWINGS MILLS, MD, 21117

**CBRE**

## FLEX SPACE WITH WAREHOUSE AND OFFICE AVAILABLE

### BUILDING FEATURES

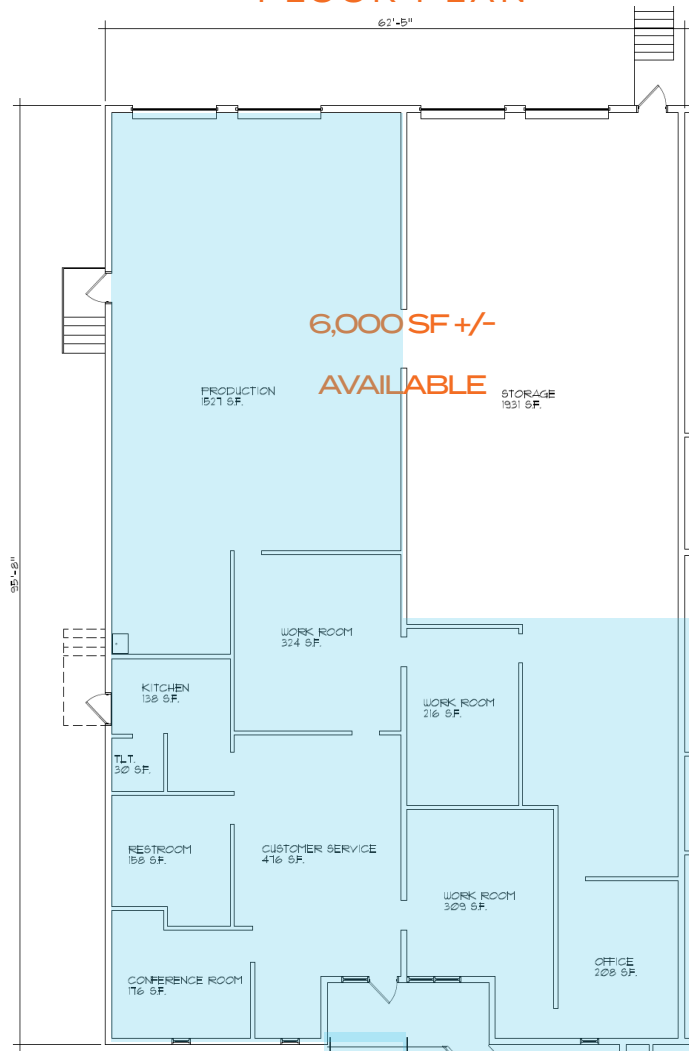
- 27,490 SF
- CEILING HEIGHT: 17" CLEAR
- COLUMN SPACE 30'W X 30'D
- BUILT IN 1972

### SPACE FEATURES

- AVAILABLE: UP TO 8,800 SF (DIVISIBLE) OF OFFICE/WAREHOUSE
- 4 DOCK DOORS; OVERSIZED TRUCK COURT SUITABLE FOR 53' TRAILERS
- OUTSIDE FENCED STORAGE AREA
- 85% AIR CONDITIONED SPACE
- 120/208V, 800 AMPS, 3 PHASE ELECTRIC
- \$9.95/SF MG (PLUS SNOW REMOVAL AND INCREASES IN TAXES, INSURANCE AND CAM)

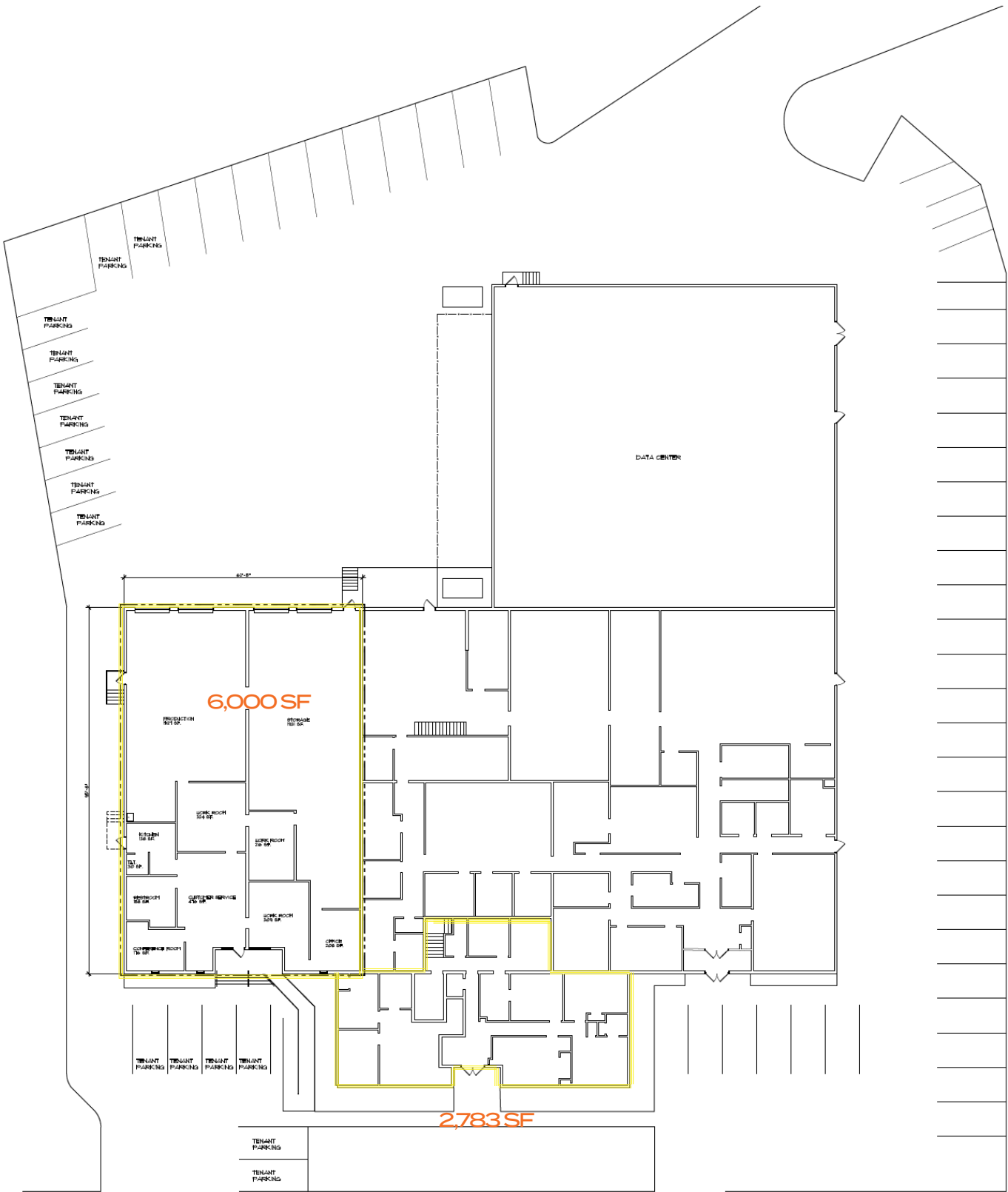


### FLOOR PLAN



 : AIR CONDITIONED

# SITE PLAN



# AMENITIES MAP



## CONTACT US

**KETCH SECOR**

410 244 3118

[ketch.secor@cbre.com](mailto:ketch.secor@cbre.com)

**ALAN GRACE**

410 244 3110

[alan.grace@cbre.com](mailto:alan.grace@cbre.com)

© 2020 CBRE, Inc. All rights reserved. This information has been obtained from sources believed reliable, but has not been verified for accuracy or completeness. You should conduct a careful, independent investigation of the property and verify all information. Any reliance on this information is solely at your own risk. CBRE and the CBRE logo are service marks of CBRE, Inc. All other marks displayed on this document are the property of their respective owners, and the use of such logos does not imply any affiliation with or endorsement of CBRE. Photos herein are the property of their respective owners. Use of these images without the express written consent of the owner is prohibited.