

PROFESSIONAL OFFICE & MEDICAL SUITE

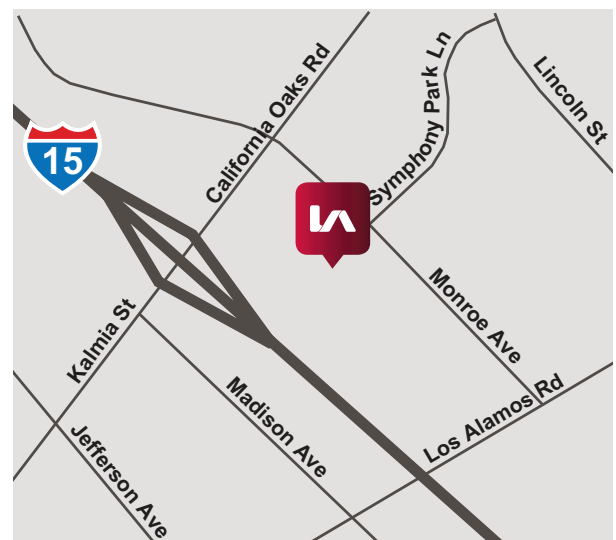
MONROE PLAZA

24671 MONROE AVENUE | MURRIETA, CA



PROPERTY HIGHLIGHTS:

- High-end courtyard style retail & office complex
- Adjacent to ±300,000 SF Cal Oaks Plaza anchored by Target, Chili's, Move Experience, Albertson's & Starbucks
- Office suites are fully improved & move-in ready with high quality finishes and private restrooms in each suite
- Neighboring Murrieta Mesa High School
- High density residential & single family homes within walking distance
- Convenient access to the I-15 Freeway via California Oaks Rd.



24671 MONROE AVE

Suite C102 Medical office, waiting room, sick room, 5 exam rooms, Doctor's private office, 2 restrooms, break staff room.

LEASE RATE: \$1.80/SF MG!

Sheri Shoemaker
951.445.4510
sshoeemaker@leetemecula.com
Lic.#00846946

Mary Piper
951.445.4516
mpiper@leetemecula.com
Lic.#01268829

No warranty or representation has been made to the accuracy of the foregoing information. Terms of sale or lease and availability are subject to change or withdrawal without notice. Lee & Associates Commercial Real Estate Services, Inc. - Riverside. 25240 Hancock Avenue, Suite 100 - Murrieta, CA 92562 Corporate ID# 01048055

PROFESSIONAL OFFICE & MEDICAL SUITE MONROE PLAZA

24671 MONROE AVENUE | MURRIETA, CA

LEE & ASSOCIATES
COMMERCIAL REAL ESTATE SERVICES



Sheri Shoemaker
951.445.4510
sshoeaker@leetemecula.com
Lic.#00846946

Mary Piper
951.445.4516
mpiper@leetemecula.com
Lic.#01268829

No warranty or representation has been made to the accuracy of the foregoing information. Terms of sale or lease and availability are subject to change or withdrawal without notice. Lee & Associates Commercial Real Estate Services, Inc. - Riverside. 25240 Hancock Avenue, Suite 100 - Murrieta, CA 92562 Corporate ID# 01048055

PROFESSIONAL OFFICE & MEDICAL SUITE

MONROE PLAZA

24671 MONROE AVENUE | MURRIETA, CA



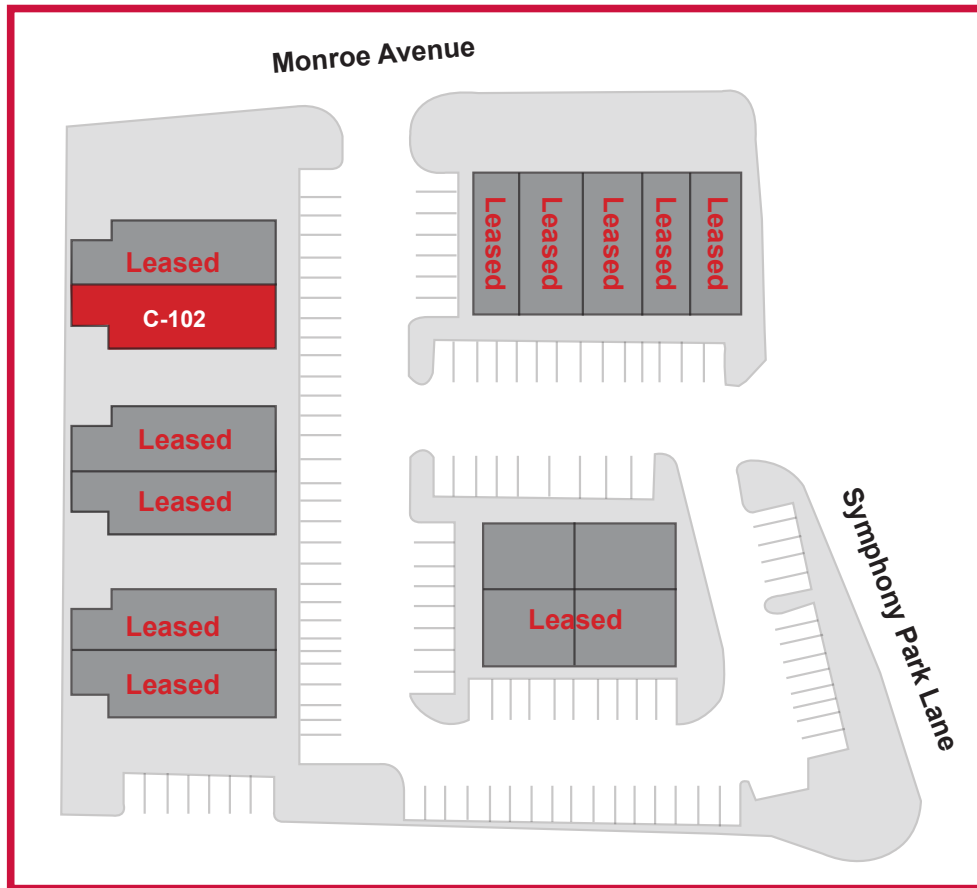
AVAILABILITY

BLDG	SUITE	ADDRESS	RSF	RATE	DESCRIPTION
C	102	24671 Monroe Avenue	±1,813	\$1.80 PSF MG	Medical office, waiting room, sick room, 5 exam rooms, Doctor's private office, 2 restrooms, break staff room. Available immediately.

Please contact agent for showing instructions.

Rev. 10/01/18

SITE PLAN



Sheri Shoemaker
951.445.4510
sshoemaker@leetemecula.com
Lic.#00846946

Mary Piper
951.445.4516
mpiper@leetemecula.com
Lic.#01268829

No warranty or representation has been made to the accuracy of the foregoing information. Terms of sale or lease and availability are subject to change or withdrawal without notice. Lee & Associates Commercial Real Estate Services, Inc. - Riverside. 25240 Hancock Avenue, Suite 100 - Murrieta, CA 92562 Corporate ID# 01048055

PROFESSIONAL OFFICE & MEDICAL SUITE

MONROE PLAZA

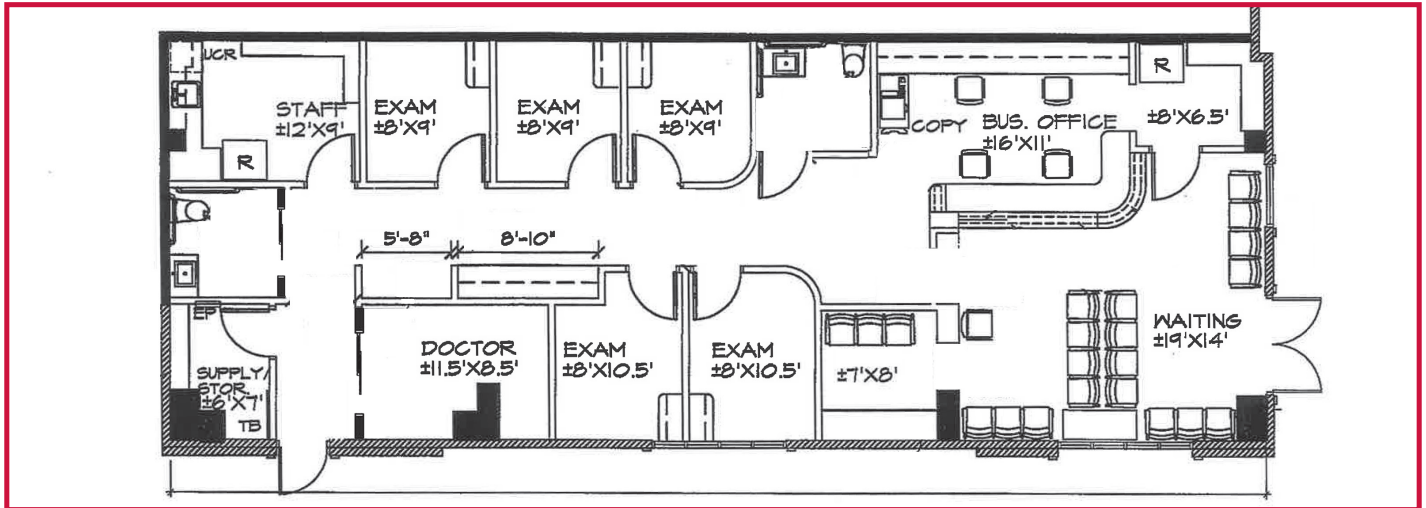
24671 MONROE AVENUE | MURRIETA, CA



24671 MONROE AVE - BLDG. C

SUITE 102

±1,813 Sq. Ft.



FRONT VIEW



Sheri Shoemaker
951.445.4510
sshoeemaker@leetemecula.com
Lic.#00846946

Mary Piper
951.445.4516
mpiper@leetemecula.com
Lic.#01268829

No warranty or representation has been made to the accuracy of the foregoing information. Terms of sale or lease and availability are subject to change or withdrawal without notice. Lee & Associates Commercial Real Estate Services, Inc. - Riverside. 25240 Hancock Avenue, Suite 100 - Murrieta, CA 92562 Corporate ID# 01048055