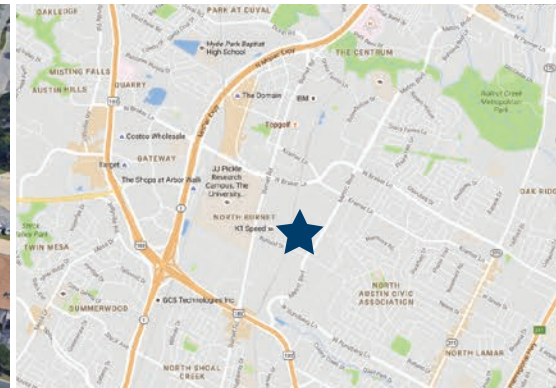




# RUTLAND 3

10201 Metropolitan Drive - Austin, TX 78758



### Available Space

Suite	RSF
10201	26,849

### Building Features



Bulk Warehouse Space



Less than 5% Office



24' Clear Height



Front Loading,  
5 Dock High Doors

**DAVIS BASS**  
(512) 538-1040  
bass@hpitx.com

**MORRIS GREEN**  
(512) 538-0081  
mgreen@hpitx.com

No warranty or representation, expressed or implied, is made as to the accuracy of the information contained herein, and same is submitted subject to errors, omissions, change of price, rental or other conditions, withdrawal without notice, and to any special listing conditions imposed by the principals.



# RUTLAND 3

10201 Metropolitan Drive - Austin, TX 78758

**SUITE 10201**

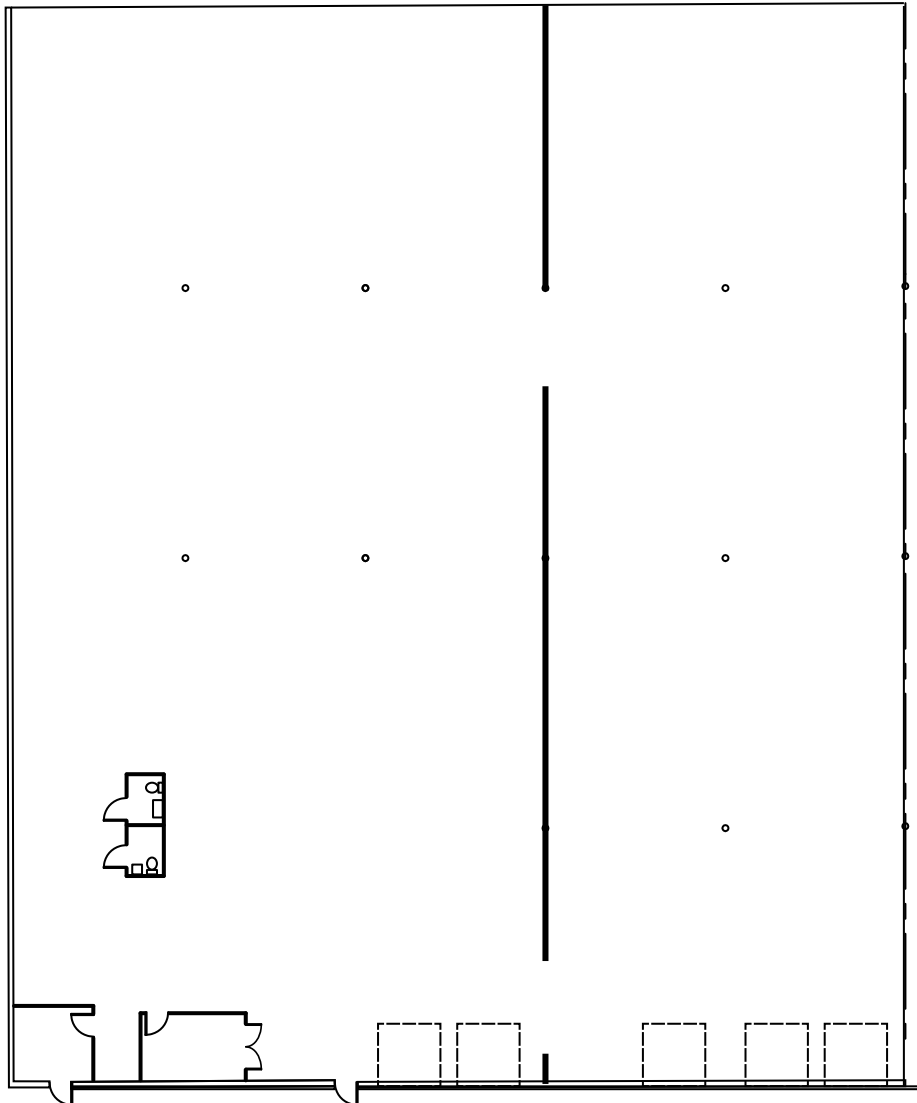
AVAILABLE NOW

**26,849 SF**

AVAILABLE SF

**BULK WAREHOUSE**

SPACE TYPE



**DAVIS BASS**

(512) 538-1040  
bass@hpitx.com

**MORRIS GREEN**

(512) 538-0081  
mgreen@hpitx.com

No warranty or representation, expressed or implied, is made as to the accuracy of the information contained herein, and same is submitted subject to errors, omissions, change of price, rental or other conditions, withdrawal without notice, and to any special listing conditions imposed by the principals.



# RUTLAND 3

10201 Metropolitan Drive - Austin, TX 78758

**SUITE 10201**

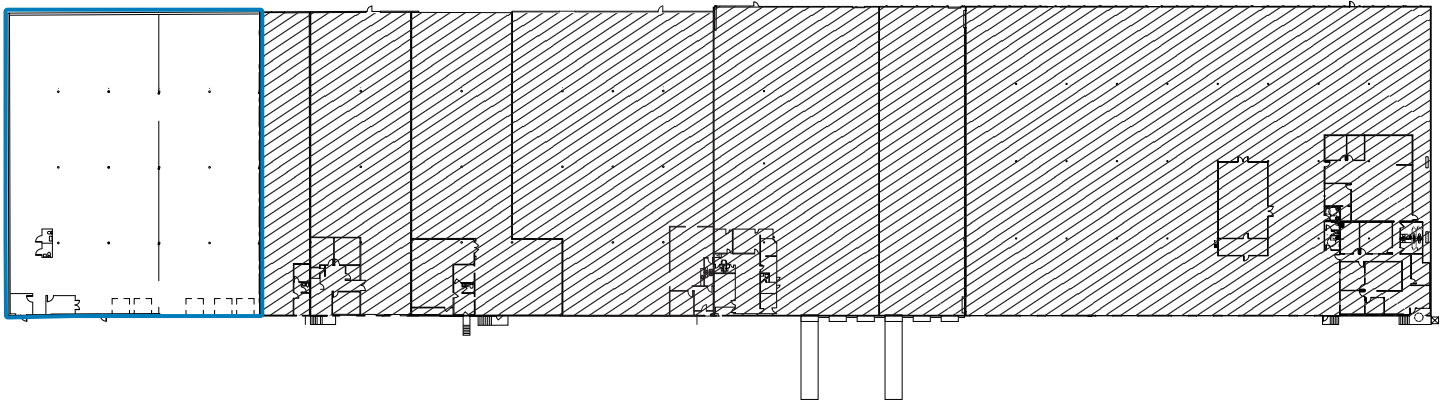
AVAILABLE NOW

**26,849 SF**

AVAILABLE SF

**BULK WAREHOUSE**

SPACE TYPE



**DAVIS BASS**  
(512) 538-1040  
bass@hpitx.com

**MORRIS GREEN**  
(512) 538-0081  
mgreen@hpitx.com

No warranty or representation, expressed or implied, is made as to the accuracy of the information contained herein, and same is submitted subject to errors, omissions, change of price, rental or other conditions, withdrawal without notice, and to any special listing conditions imposed by the principals.