



# EASTLAKE 2851

2851 EASTLAKE AVENUE E :: SEATTLE, WASHINGTON 98102

FOR MORE INFORMATION PLEASE CONTACT:

**Susie Detmer**

Senior Vice President  
+1 206 292 6040  
susie.detmer@cbre.com  
www.cbre.com/susie.detmer

**Stacy Reid**

Vice President  
+1 206 292 6034  
stacy.reid@cbre.com  
www.cbre.com/stacy.reid

**Inger Johnson**

Senior Associate  
+1 206 292 6036  
inger.johnson@cbre.com  
www.cbre.com/inger.johnson

RETAIL FOR LEASE

**CBRE**



# EASTLAKE 2851

2851 EASTLAKE AVENUE E :: SEATTLE, WASHINGTON 98102

## FOR LEASE

1,215 SF EASTLAKE RETAIL OR OFFICE SPACE AVAILABLE

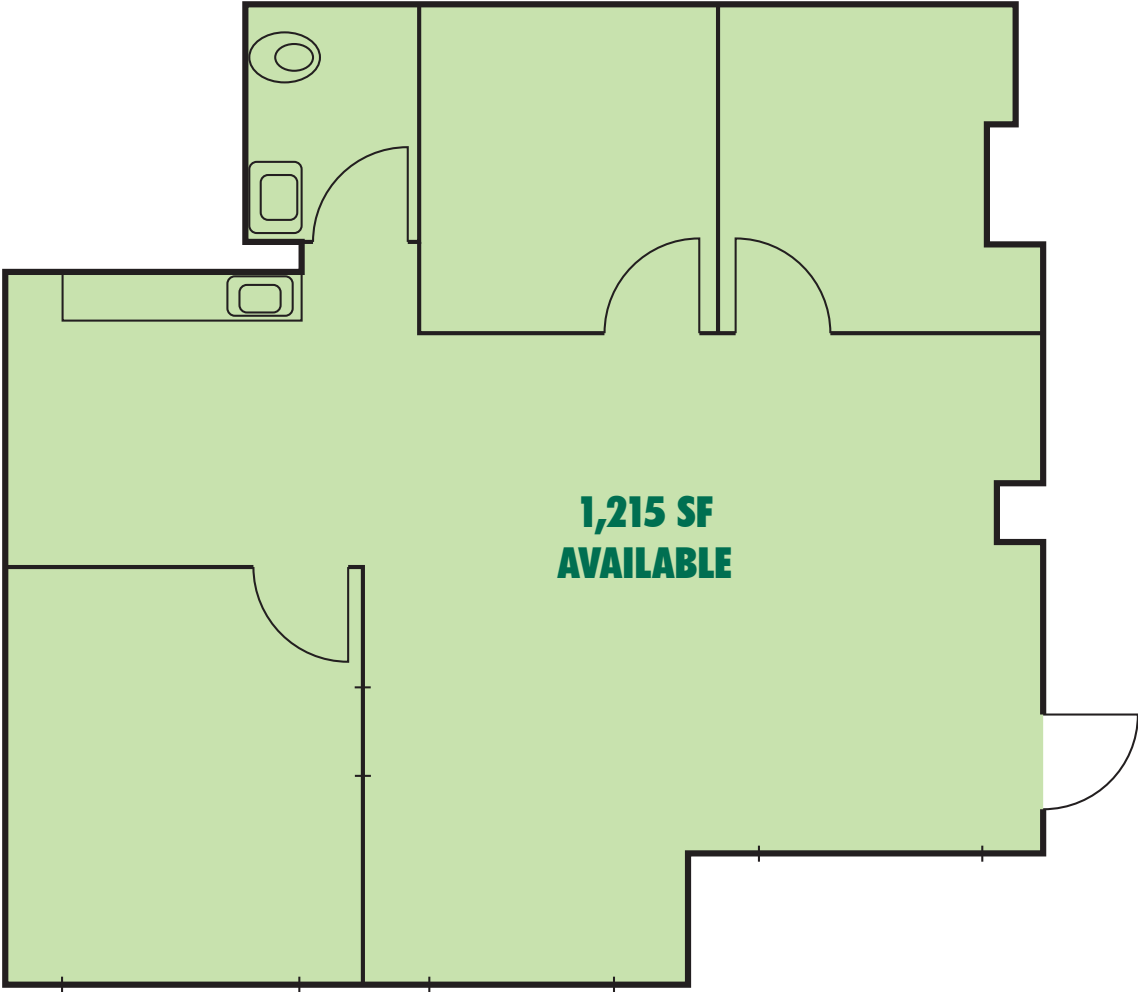
## HIGHLIGHTS

- Small retail or office suite along Eastlake Avenue East
- Great space for café, small scale market, medical or financial tenant
- Built out with three private offices, reception area, kitchenette and restroom
- Free street parking available





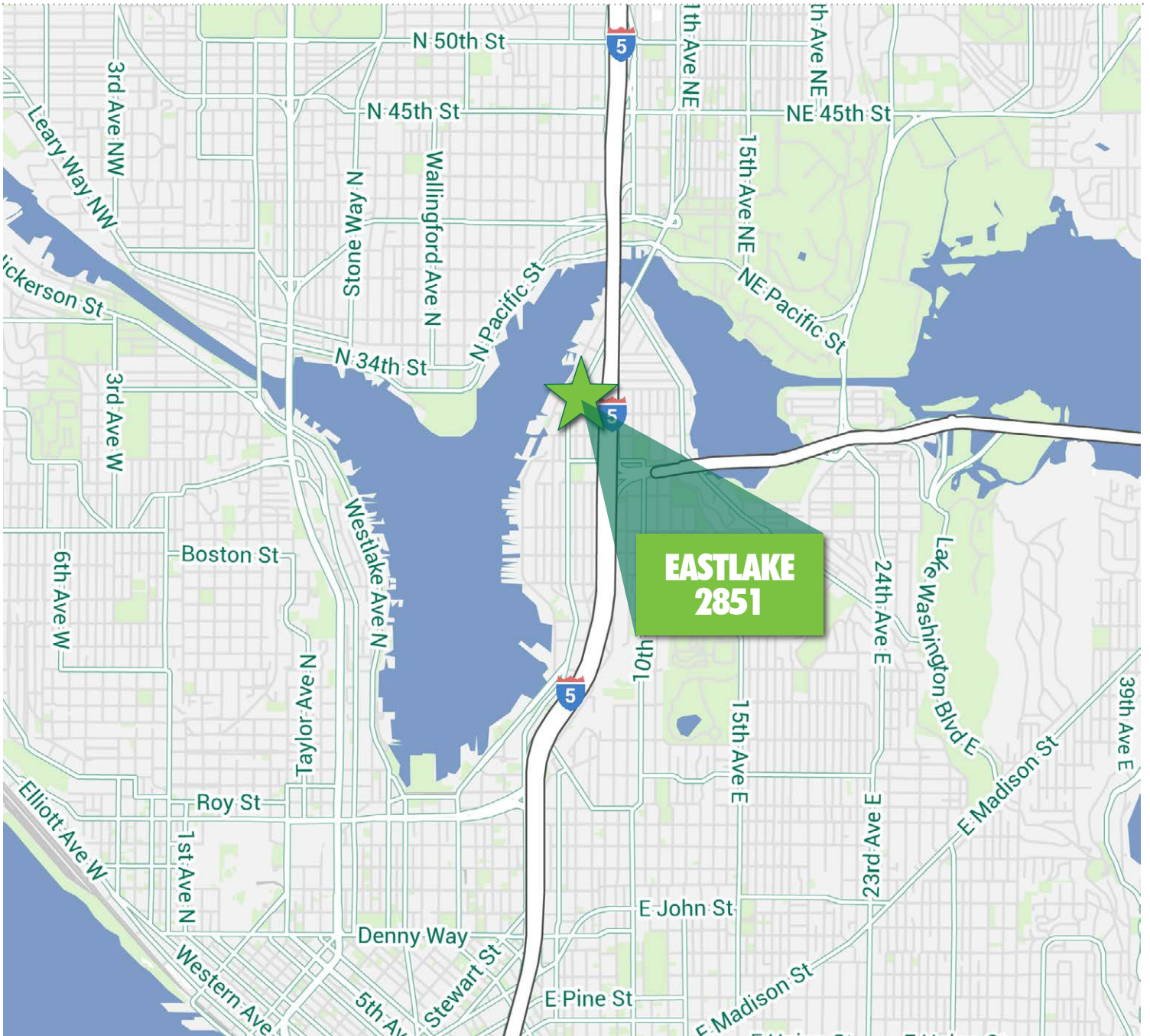
FLOOR PLAN



2015 DEMOGRAPHICS (est.)	1 Mile Radius	3 Mile Radius	5 Mile Radius
POPULATION	27,167	271,362	450,742
DAYTIME POPULATION	29,659	330,926	437,936
NUMBER OF HOUSEHOLDS	12,806	140,117	221,545
AVERAGE HOUSEHOLD INCOME	\$91,258	\$94,613	\$95,364

# EASTLAKE 2851

2851 EASTLAKE AVENUE E :: SEATTLE, WASHINGTON 98102



**Susie Detmer**

Senior Vice President  
+1 206 292 6040  
susie.detmer@cbre.com  
www.cbre.com/susie.detmer

**Inger Johnson**

Senior Associate  
+1 206 292 6036  
inger.johnson@cbre.com  
www.cbre.com/inger.johnson

**Stacy Reid**

Vice President  
+1 206 292 6034  
stacy.reid@cbre.com  
www.cbre.com/stacy.reid



CBRE, Inc. | 1420 Fifth Avenue | Suite 1700 | Seattle, WA 98101 | +1 206 292 1600 T | +1 206 292 6033 F

© 2015 CBRE, Inc. This information has been obtained from sources believed reliable. We have not verified it and make no guarantee, warranty or representation about it. Any projections, opinions, assumptions or estimates used are for example only and do not represent the current or future performance of the property. You and your advisors should conduct a careful, independent investigation of the property to determine to your satisfaction the suitability of the property for your needs. CBRE and the CBRE logo are service marks of CBRE, Inc. and/or its affiliated or related companies in the United States and other countries. All other marks displayed on this document are the property of their respective owners. Photos herein are the property of their respective owners and use of these images without the express written content of the owner is prohibited. ejs 06-16-15